



# Bem Wireless HL2739B Charging Base Battery Replacement

Is your auxillary charging base no longer...

Written By: Ryan McQueeney



# INTRODUCTION

Is your auxillary charging base no longer holding a charge. Dont forget the charging basics and follow this guide to replace your auxillary charger!

---

## TOOLS:

[iFixit Opening Tool](#) (1)

[Tweezers](#) (1)

[Metal Spudger](#) (1)

[J1 Screwdriver Bit](#) (1)

---

## Step 1 — Charging Base Battery



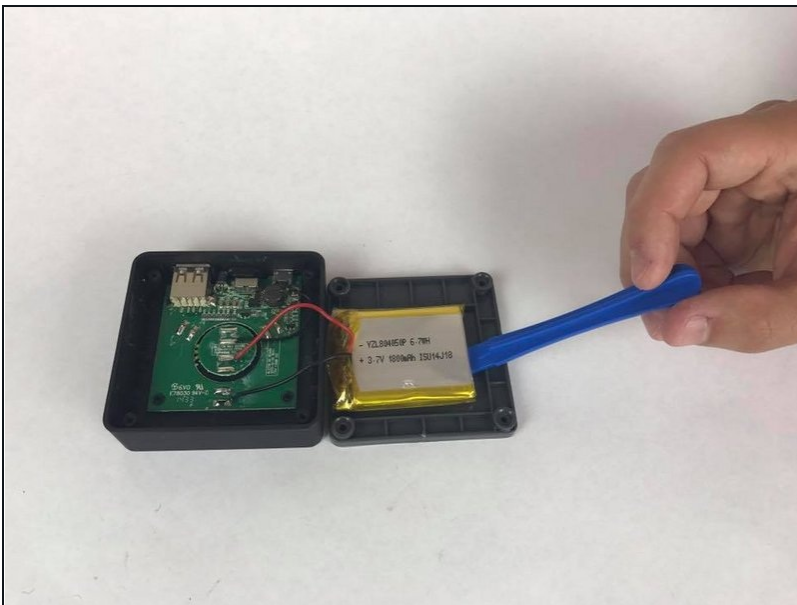
- Peel the rubber cover back from the corner of the auxiliary charging base to reveal the screw.

## Step 2



- Use the J1 bit attached to the screwdriver to remove the four 10mm screws from the bottom of the auxiliary charging base.

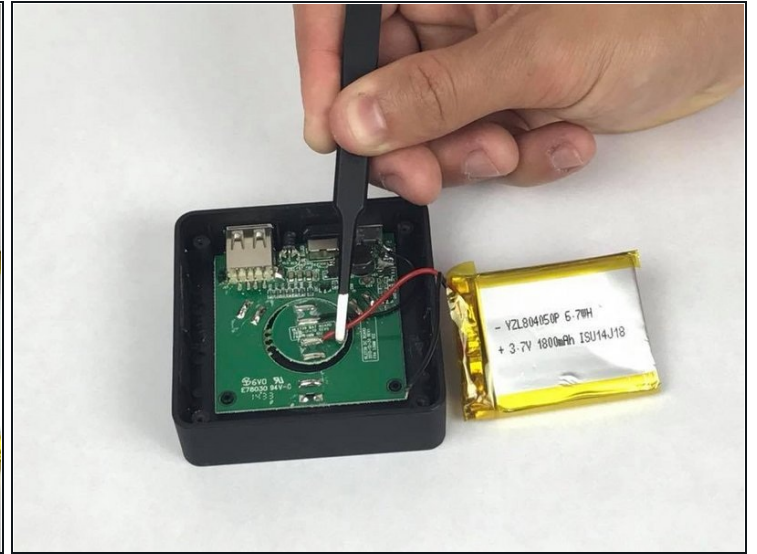
## Step 3



- Lift the bottom cover away from the rest of the auxiliary charging base.

⚠ There are wires connecting the battery and cover to the rest of the auxiliary charging base. Be careful when removing the auxiliary charging base cover.

## Step 4



- Using the [tweezers](#), pull the wires from the auxiliary charging base's internal chip.
- ⚠ Be careful not to damage the chip when you remove the wires.
- ⓘ It will likely require soldering to reassemble the auxiliary charging base after this step.
- 

To reassemble your device, follow these instructions in reverse order.