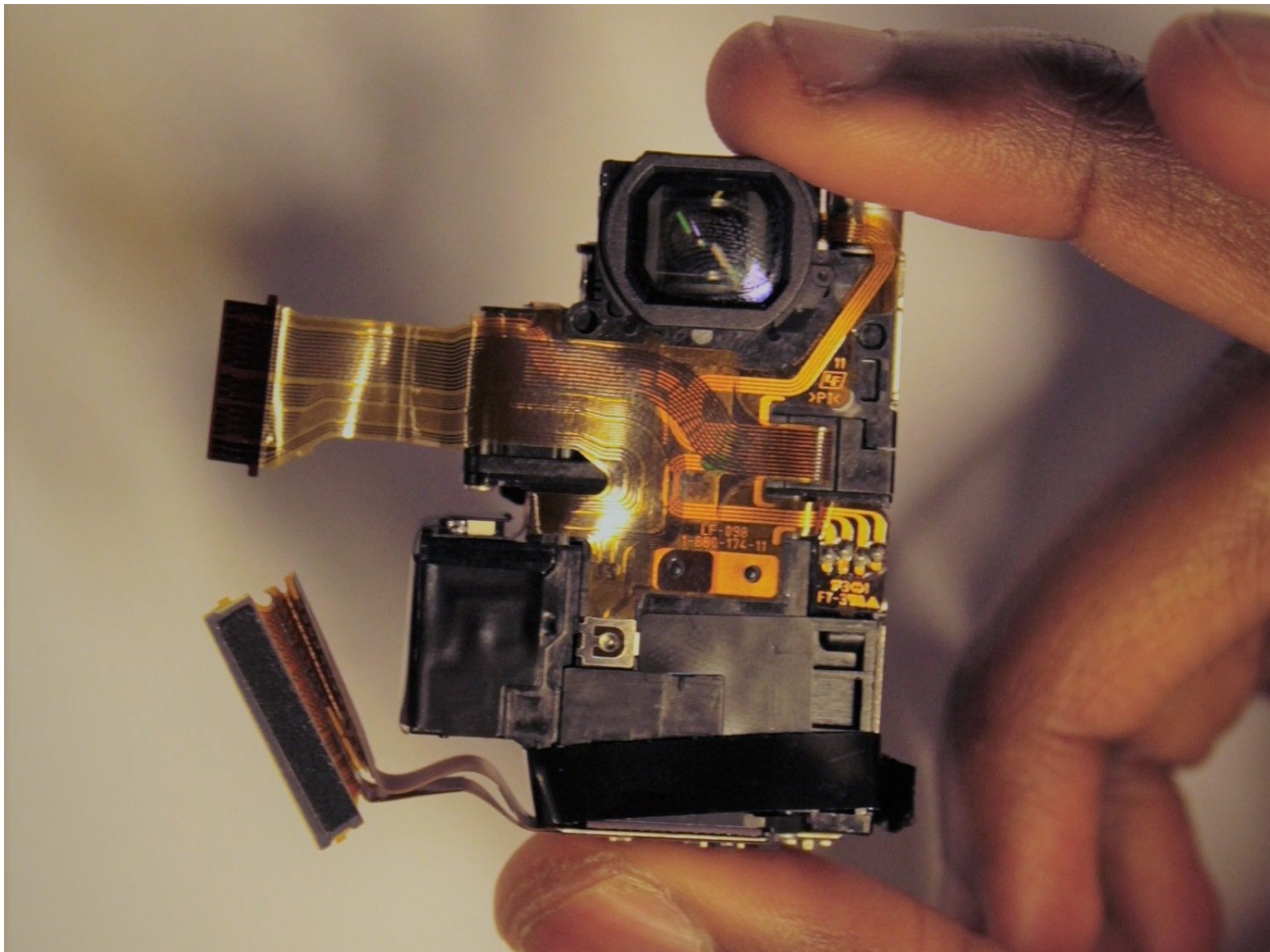




# Sony Cyber-Shot DSC-TX9 Lens Replacement

This guide will show you how to disassemble your Sony CyberShot DSC-TX9 for the purpose of replacing a non-functional lens component.

Written By: robert.oliver6



## INTRODUCTION

This guide is for issues dealing with improper lens operations. It will fix any issues that deal with blurry images, blank images or anything that distorts the picture. This repair will solve any of the problems listed above.



### TOOLS:

- [Phillips #0 Screwdriver](#) (1)
- [Spudger](#) (1)

**prying and separating tool**

*plastic tool used specifically in this guide for gently prying apart parts of the device*

- [Tweezers](#) (1)

**precision tweezers**

*for handling and removing small pieces, specifically for this device, ribbons*

---

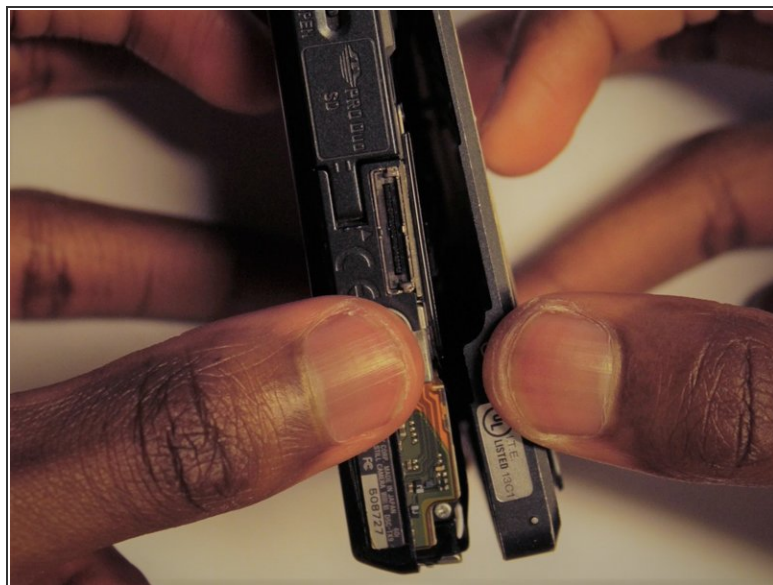
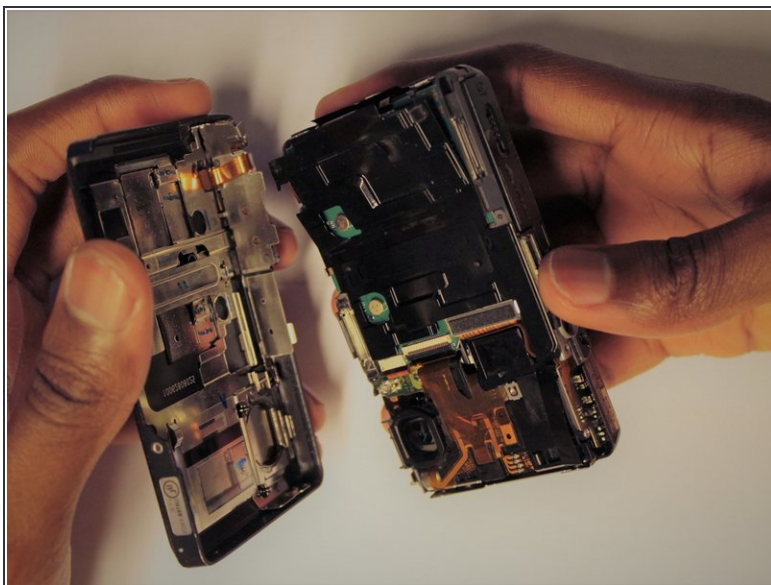
## Step 1 — Prerequisites Only



- Use a Phillips #0 screwdriver to unscrew the six 2mm screws on the outer case of the camera.

☞ If there is a battery or SD card inside remove before beginning the process.

## Step 2

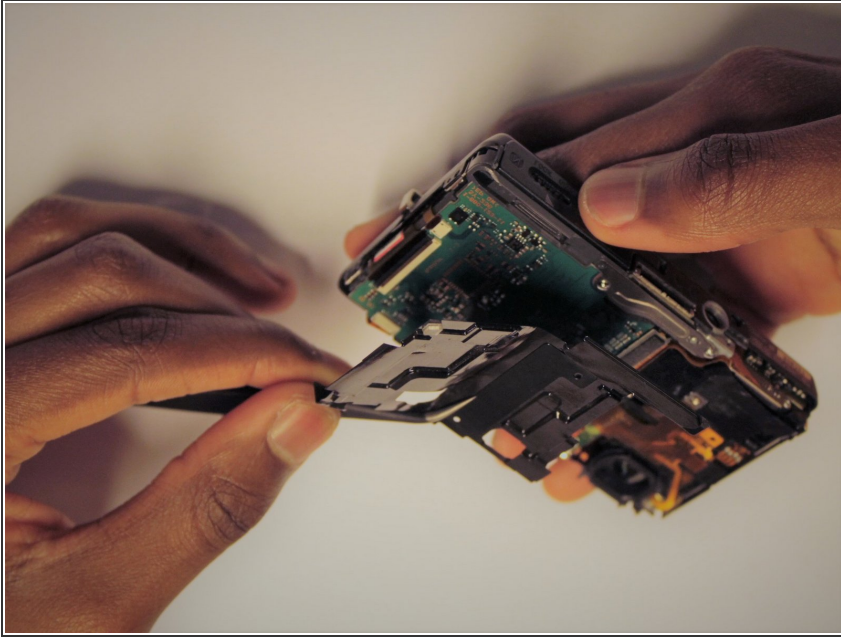


- Use your hands or a Spudger to Pull off the front cover of the camera.

⚠ If the casing is not coming apart easily, do not force it.

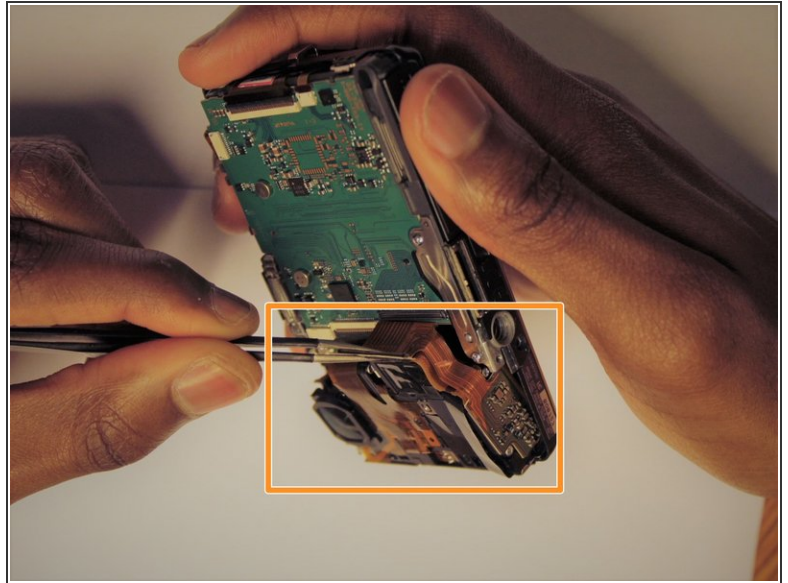
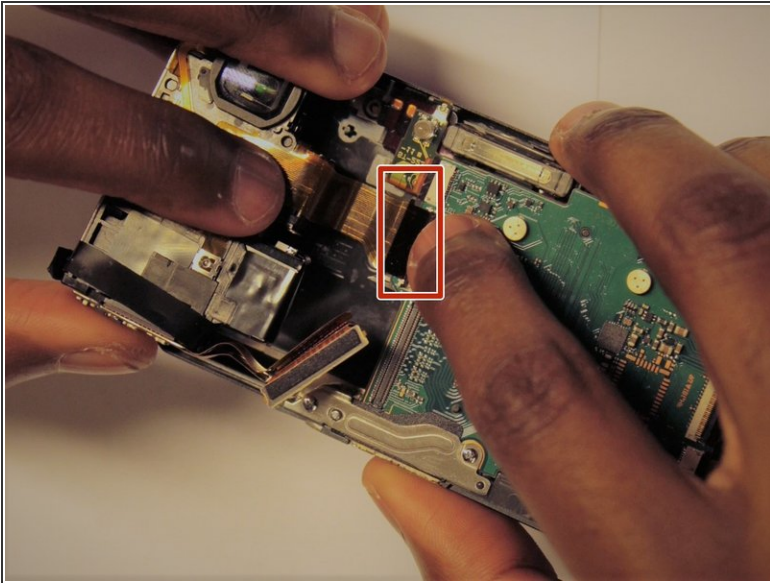


## Step 3



- Remove the protective black cover layer with your hands and set it aside.
- ⓘ The use of tweezers may be necessary if the cover is difficult to remove.

## Step 4

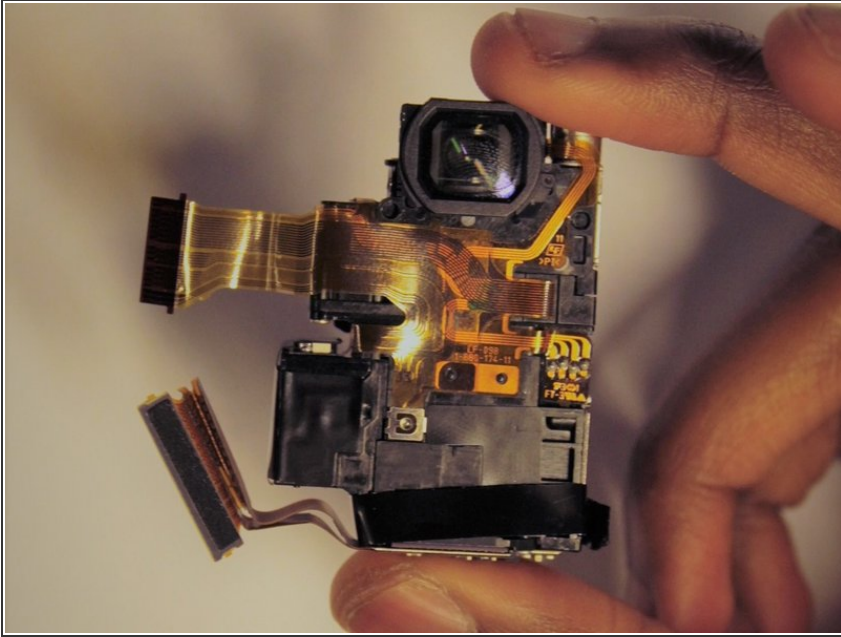


- The ZIF connector can be removed by flipping the small black holder into the upright position and then sliding the ribbon cable out carefully.
- Once this has been done, use tweezers to unplug the flat topped connector for the lens' circuit board from the motherboard.

 **DO NOT** force the ribbon cables or they will rip.

 Refer to the ([Recognizing & Disconnecting Cable Connectors](#)) page for assistance.

## Step 5 — Lens



- Using the tweezers carefully remove the broken/damaged lens with its attached circuit board

To reassemble your device, follow these instructions in reverse order.