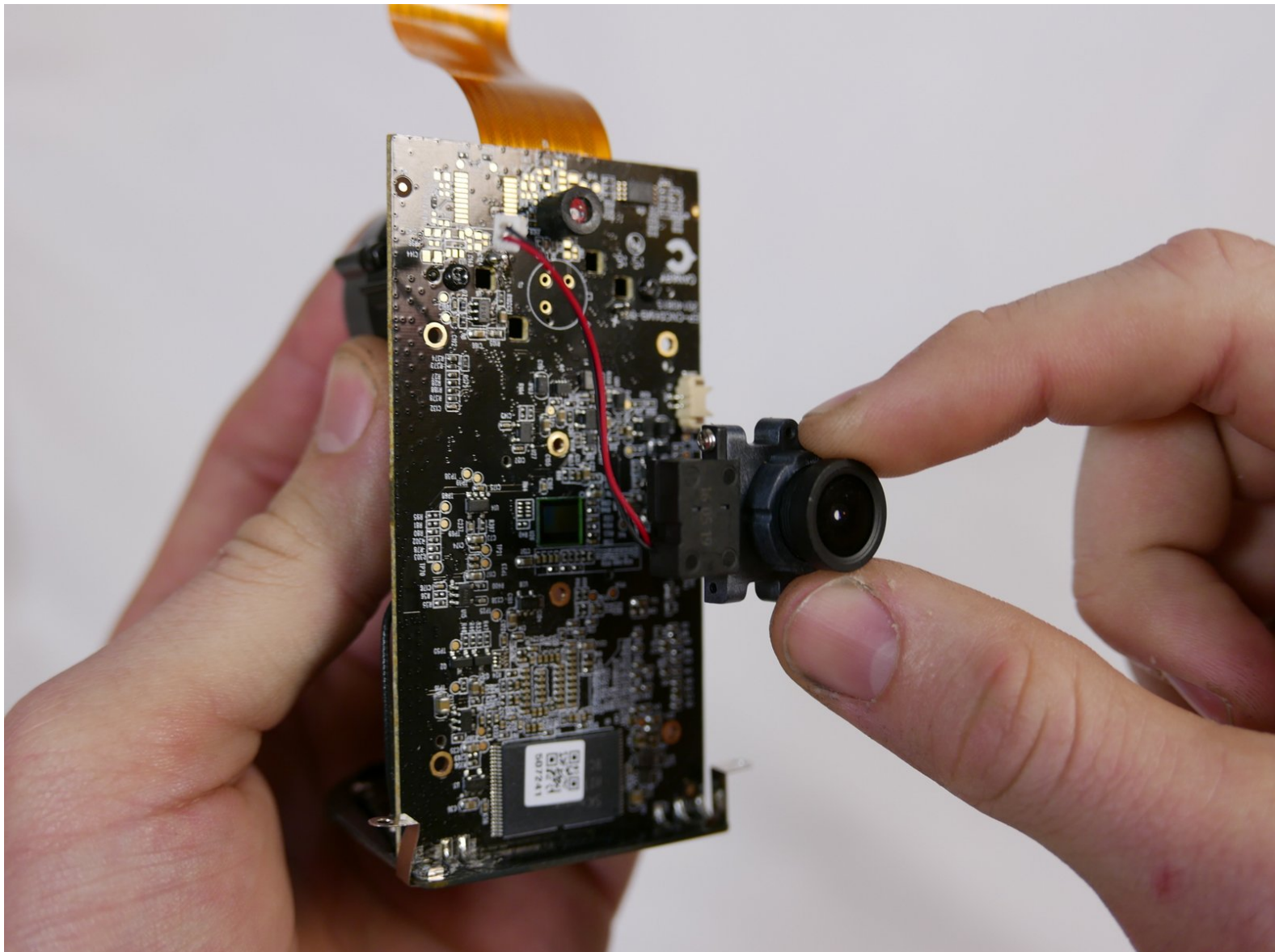




Canary CAN100USBK Lens Assembly Replacement

Replace the camera lens that sits underneath the infrared LED board.

Written By: Kristopher Gates



INTRODUCTION

If your camera is malfunctioning, this guide will show you how to replace the camera lens.

After you have removed the infrared LED board, the only thing keeping the camera lens in is two screws on the opposite side of the motherboard. Remember not to let the lens drop as you remove the two screws.

A Phillips #0 screwdriver can be used for these two screws.



TOOLS:

- [Phillips #0 Screwdriver](#) (1)
 - [Spudger](#) (1)
-

Step 1 — Bottom Casing



- Grip the rubber ring with your fingers and pull up.
- Rotate the Canary as you pull out one tab at a time.

Step 2



- Use your Phillips #0 screwdriver to remove the four 6mm screws.


Step 3



- Use the flat end of the spudger to carefully pry off the bottom casing.
- Alternate pushing up on the left and right sides until the clips holding the case in are visible.

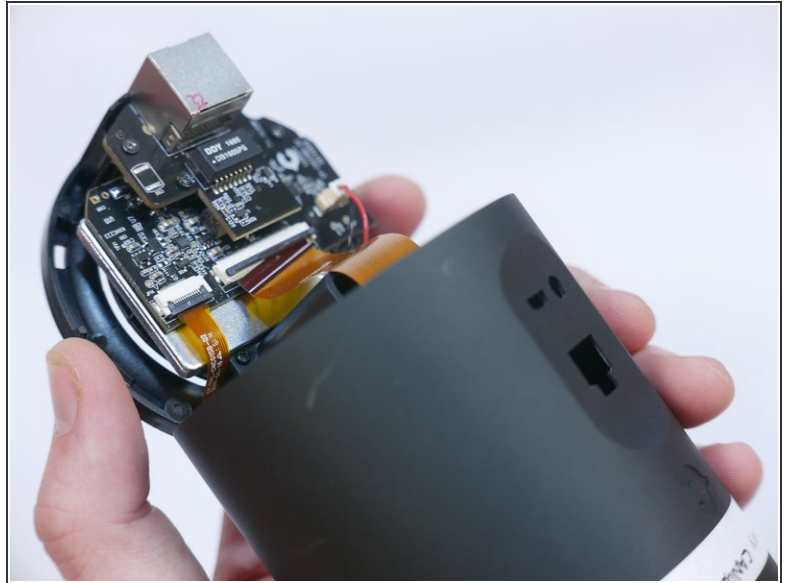
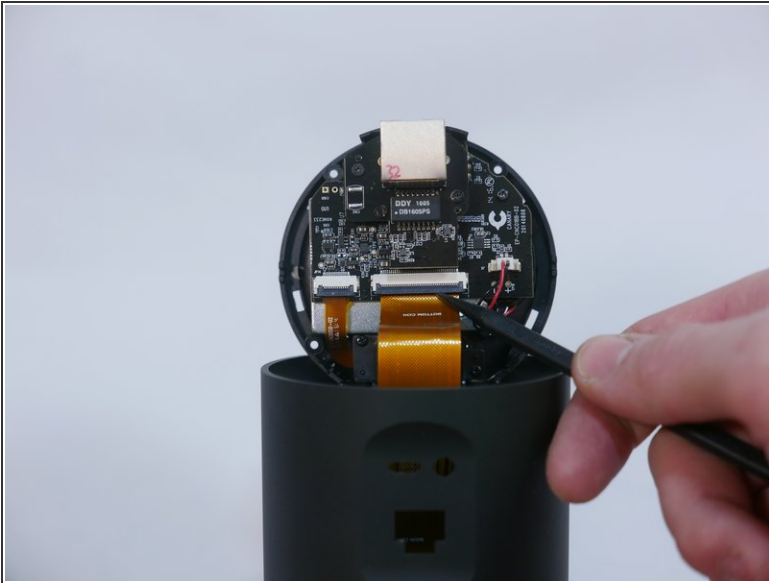
Step 4



 Do not yank the bottom off or you may damage the ribbon cable or the ZIF connector.

- Carefully remove the bottom casing by gripping it on both sides and pulling straight up.

Step 5



- Use the pointed end of the spudger to flip up the small retaining flap on the ZIF ([zero insertion force](#)) connector.
- Pull the ribbon cable out towards the device.

Step 6 — Front Panel



- There are two empty nooks underneath the bottom of the panel close to each side of the case.
- Place the pointed edge of the spudger in one of the nooks under the panel and pry upwards.

Step 7



- ⓘ Adhesive will have to be reapplied after removing the panel.
- Pull the panel away from the device.

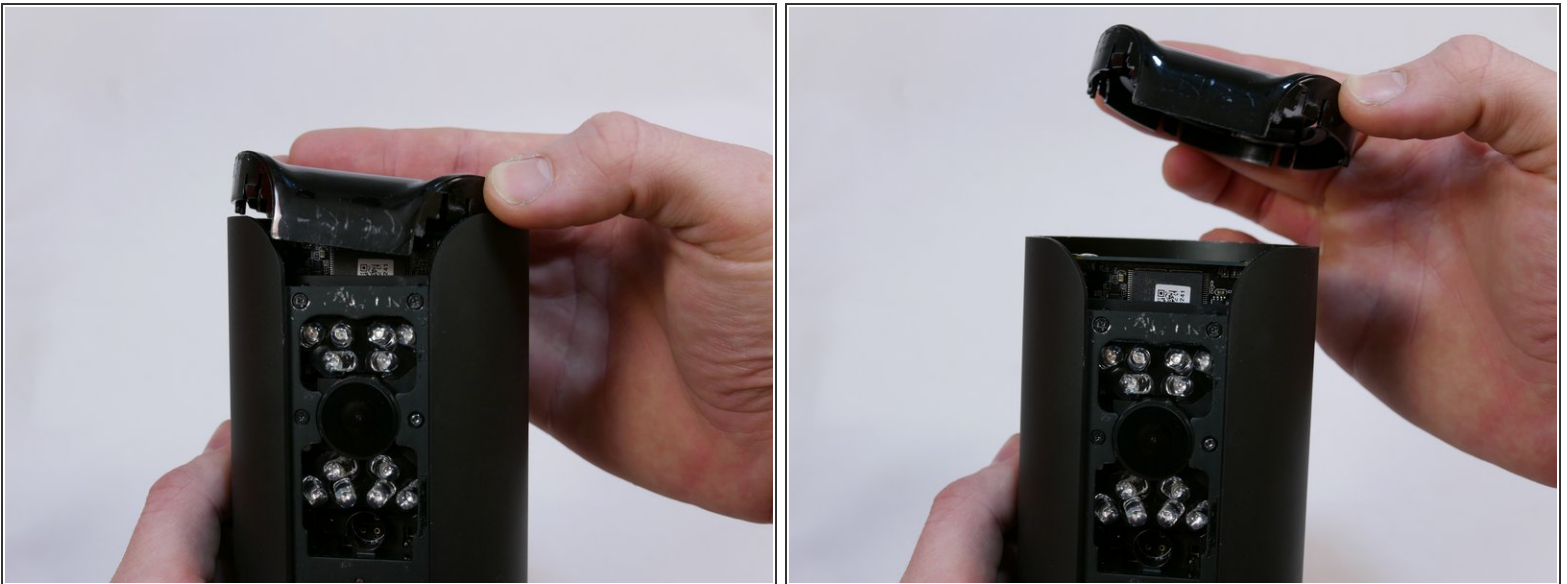
Step 8 — Top Casing



- Use the flat end of the spudger to carefully pry off the top casing.
- Alternate pushing up on the left and right sides until the inner clips are released.

⚠ Do not use too much force or the top may fly off unexpectedly.

Step 9



- Pull the top casing away from the device.

Step 10



- Use your Phillips #0 screwdriver to remove the two 5mm screws.

Step 11 — Infrared LED Board



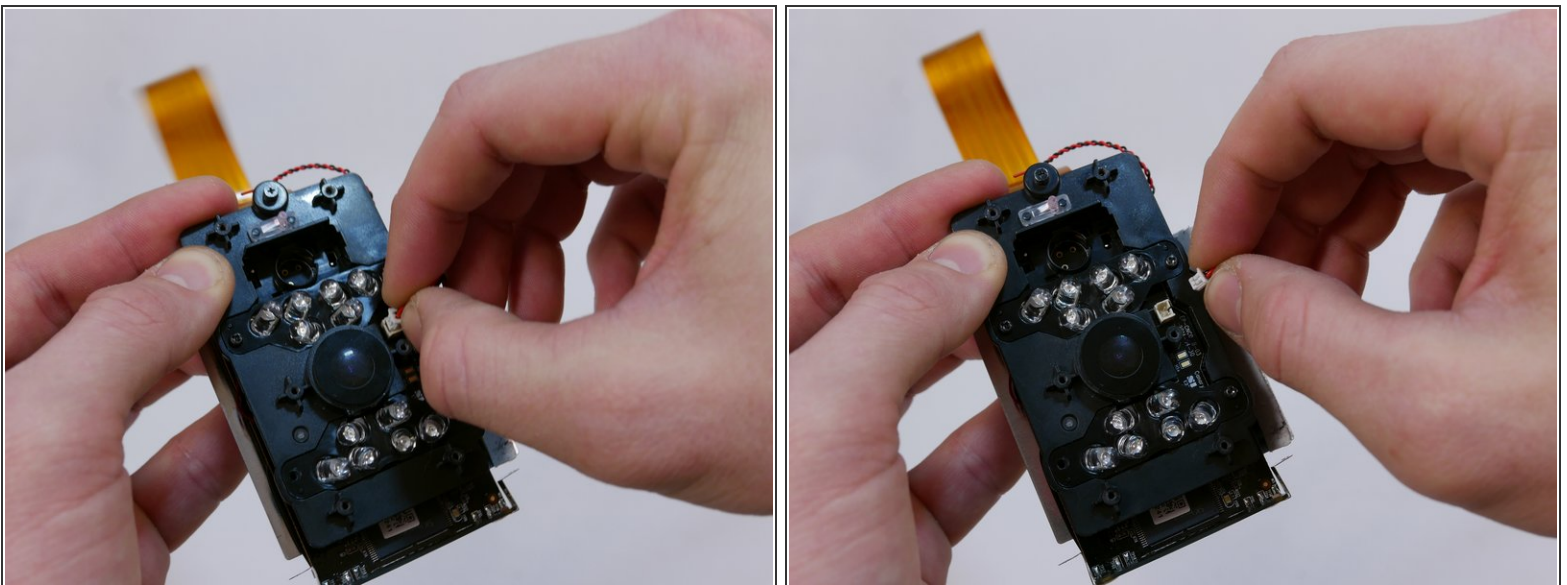
- Using a Phillips #0 screwdriver, remove the six 6mm screws.
- ⓘ The seventh screw in the bottom middle is not connected to the motherboard and does not need to be removed.
- ⚠ As you remove the screws, hold on to the motherboard to prevent it from falling and sustaining damage.


Step 12



- Grip the circular part of the motherboard and pull it straight out of the device.

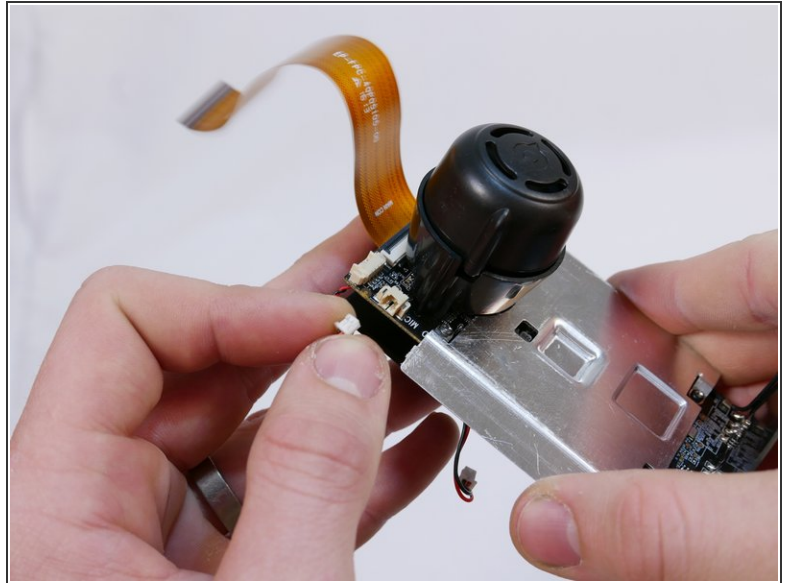
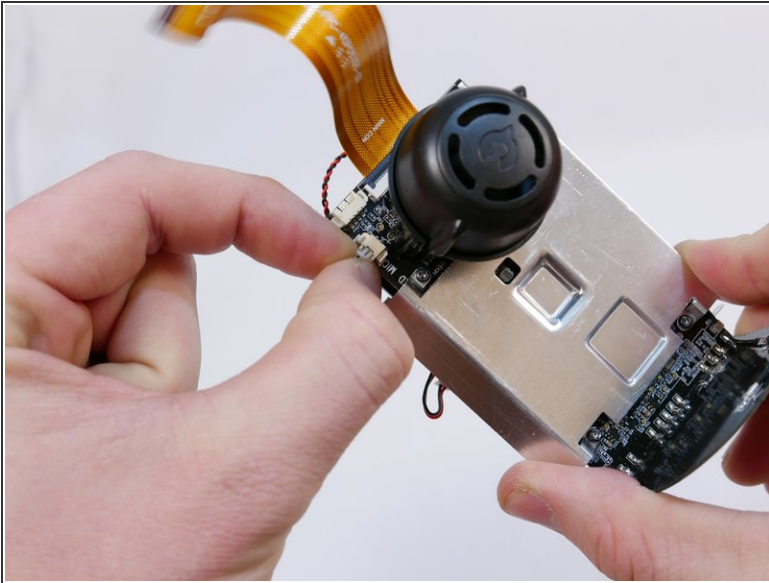
Step 13



 Do not pull on the wires themselves as they are fragile and may break from the connector.

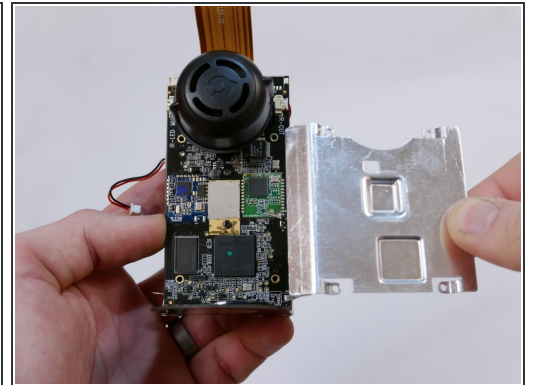
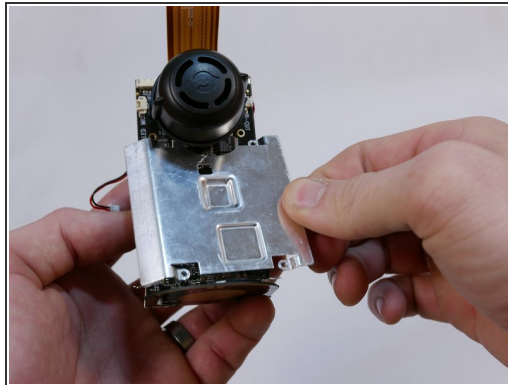
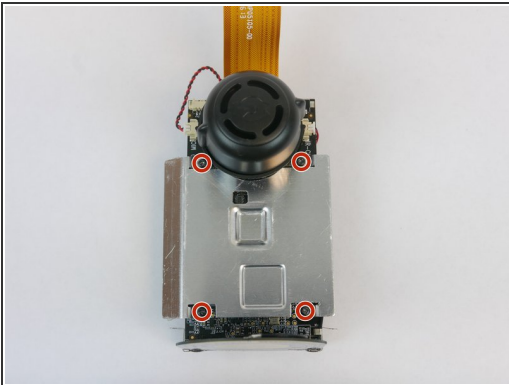
- Locate the power connector next to the lens protector on the infrared LED board. Using your fingers, wiggle the power connector back and forth until it is loose.

Step 14



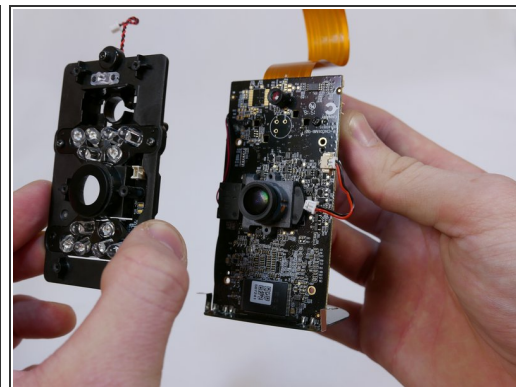
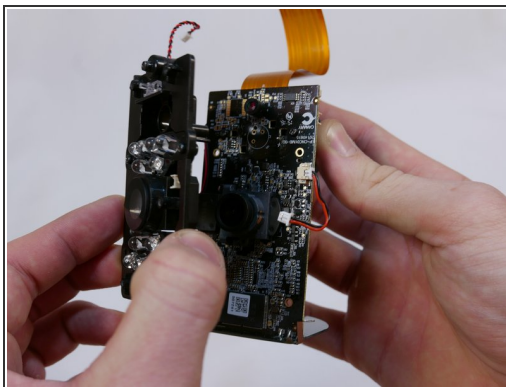
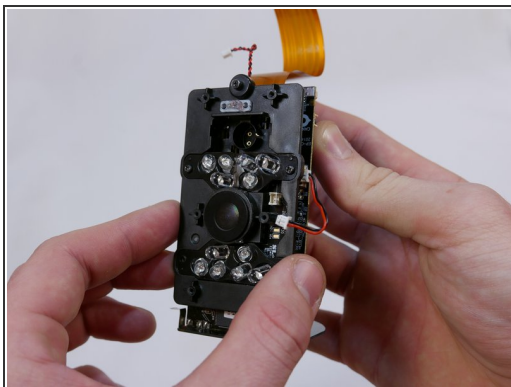
- Find the power connector next to the buzzer that is labelled "MIC IR-LED". Use your fingers to wiggle it back and forth until it becomes loose.

Step 15



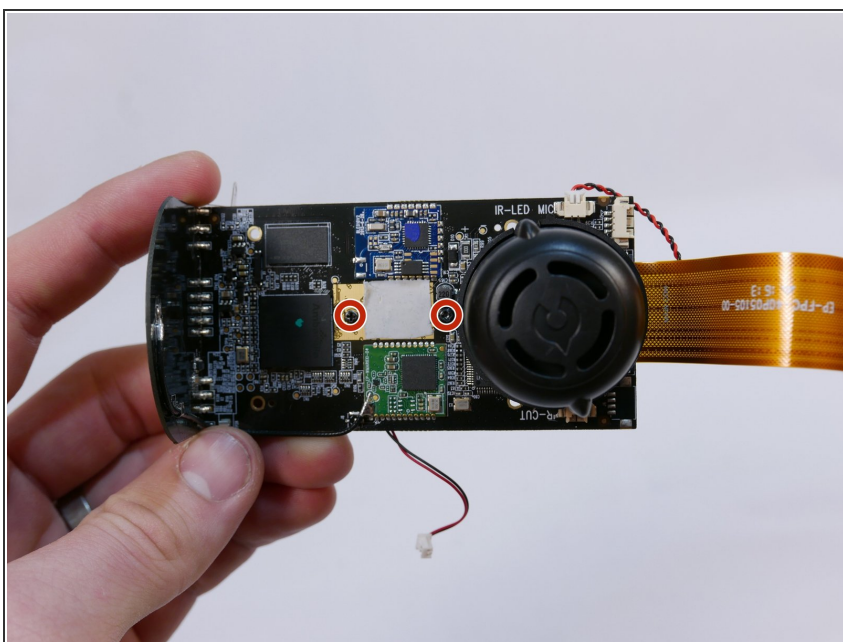
- Remove the four Phillips #0 6mm screws.
 - Lift the heatsink up and pull it away from the motherboard.
- ⚠ These screws also hold the infrared LED board in. Be sure to hold it while you remove the heatsink screws.

Step 16



- Lift the infrared LED board directly upwards and pull away from the motherboard.

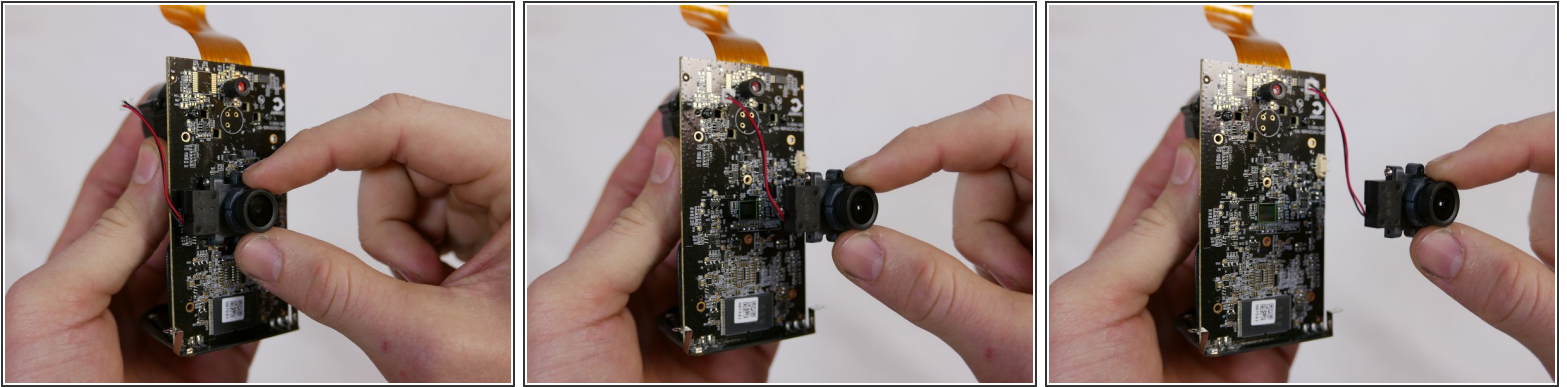
Step 17 — Lens Assembly



- Remove the two Phillips #0 5mm screws.

⚠ Hold the lens assembly on the other side of the motherboard to prevent it from falling as you remove these screws.

Step 18



- Using your forefinger and thumb, grip the top and bottom of the lens assembly and pull away from the motherboard.

To reassemble your device, follow these instructions in reverse order.