



Bose SoundLink Mini II Button Board Replacement

Audio buttons not working? This guide will help...

Written By: jack dighera



INTRODUCTION

Audio buttons not working? This guide will help you replace the button board of the Bose SoundLink Mini II. In order to replace these parts be sure to have the necessary tools that are required and the replacement parts. Use caution when working with a charged battery while removing the circuit boards.

Note: This procedure requires removing and reinstalling the battery, which requires the use of a [soldering iron](#) and/or a lot of careful disassembly.

TOOLS:

[Soldering Iron 60w Hakko 503F](#) (1)

[Desoldering Braid](#) (1)

[Lead-Free Solder](#) (1)

[Mako Driver Kit - 64 Precision Bits](#) (1)

[TR9 Torx Security Screwdriver](#) (1)

[Metal Spudger](#) (1)

Step 1 — Battery



- Flip the speaker over onto its back.

Step 2 — Remove the rubber base



- Gently remove the rubber base from speaker by pulling around the edges.

Step 3



- Remove the four 6mm T9 Torx bit screws from the corners of the battery.

Step 4



- Carefully lift the battery from the side nearest the four gold contact pins, but don't try to fully remove it yet.
- ⓘ At this point, the battery remains connected via four wires to the power supply board.
- Carefully desolder the four wires from the power supply board in order to completely detach the battery. There is very little room for the soldering iron without damaging the case or the board; you may want to remove the board first.
- For help with soldering, see the [soldering guide](#).
- ⓘ Alternatively, you may remove the battery and power supply board together, without any soldering, but access requires some [additional disassembly](#) while carefully leaving the battery connected via the wires the entire time.

Step 5 — Bose Technicians' Instruction Manual

entering the unit. Use a vacuum to remove any metal shavings.

1. Grille Removal

Note: The grille is held in place by Pressure Sensitive Adhesive (PSA) strips located in the center of the grille (figure 5.) and also by two tabs on either end of the grille (figure 3).

To avoid destroying the grill during the removal process, brush alcohol over the PSA strips (figure 5) before attempting to remove it.

Important Note: To avoid damage to the cabinet, do not use the cabinet as a pry point to remove the grille.

1.1 At the location shown in Figure 3, insert the tip of a plastic tool, such as a spudger, between the grille and its rubber gasket.

Note: The location shown is between the PSA and grille tabs securing the grille.

1.2 Rotate the spudger away from you while prying against the rubber gasket. Figure 4.

1.3 Once a portion of the grille is released, grasp the grille and pull it across the unit lengthwise to release the PSA. Figure 5.

2. Battery Removal

The Battery in SoundLink® Mini II is hardwired to the Board PCB. See Figure 6. Place the product in

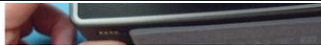


Figure 3.



Figure 4.

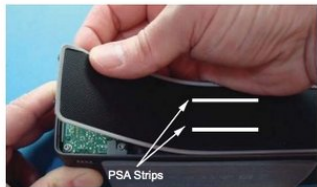


Figure 5.



- Bose Technicians Instruction Manual: <https://riverparkinc.com/wp-content/uplo...>

Step 6 — Audio Port/USB Circuit Board



- With the battery removed the button board will now be visible.

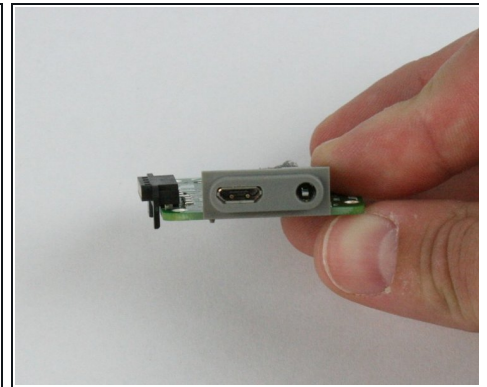
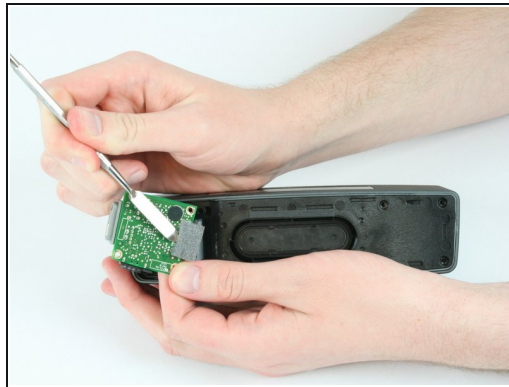
Step 7



- Remove the rear grille using the metal spudger.

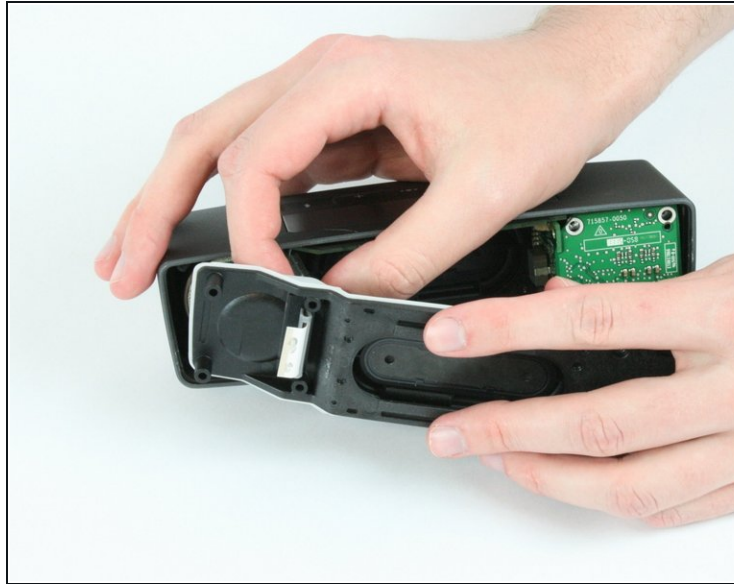
⚠ The grille bends and deforms easily.

Step 8



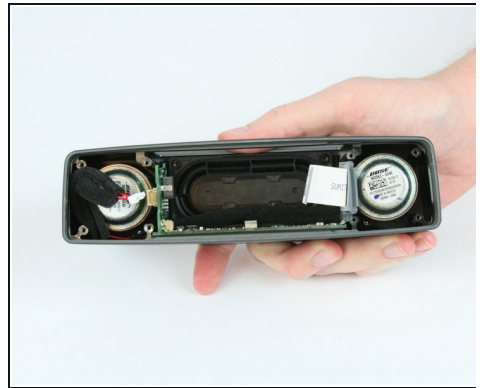
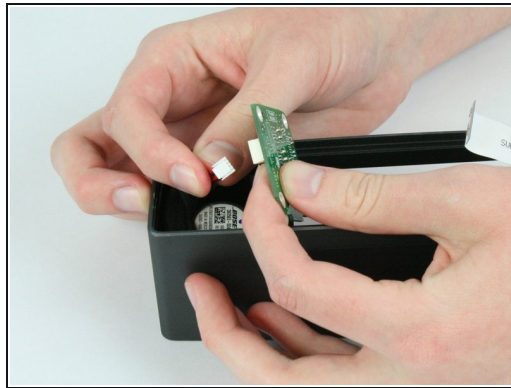
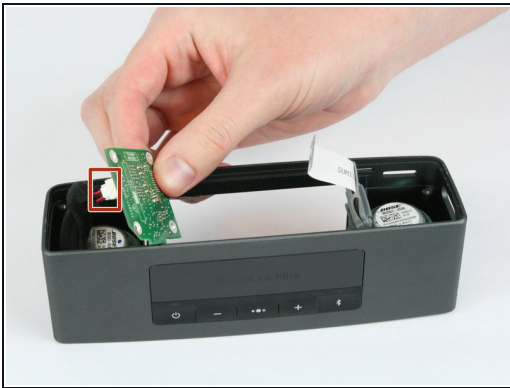
- Remove the eight 9mm T9 Torx screws from the circuit board and back panel.
- Use a metal spudger to release the ribbon cable connector and remove cable from the audio/USB board.

Step 9 — Button Board



- Pull the ribbon cable through the rear panel.

Step 10

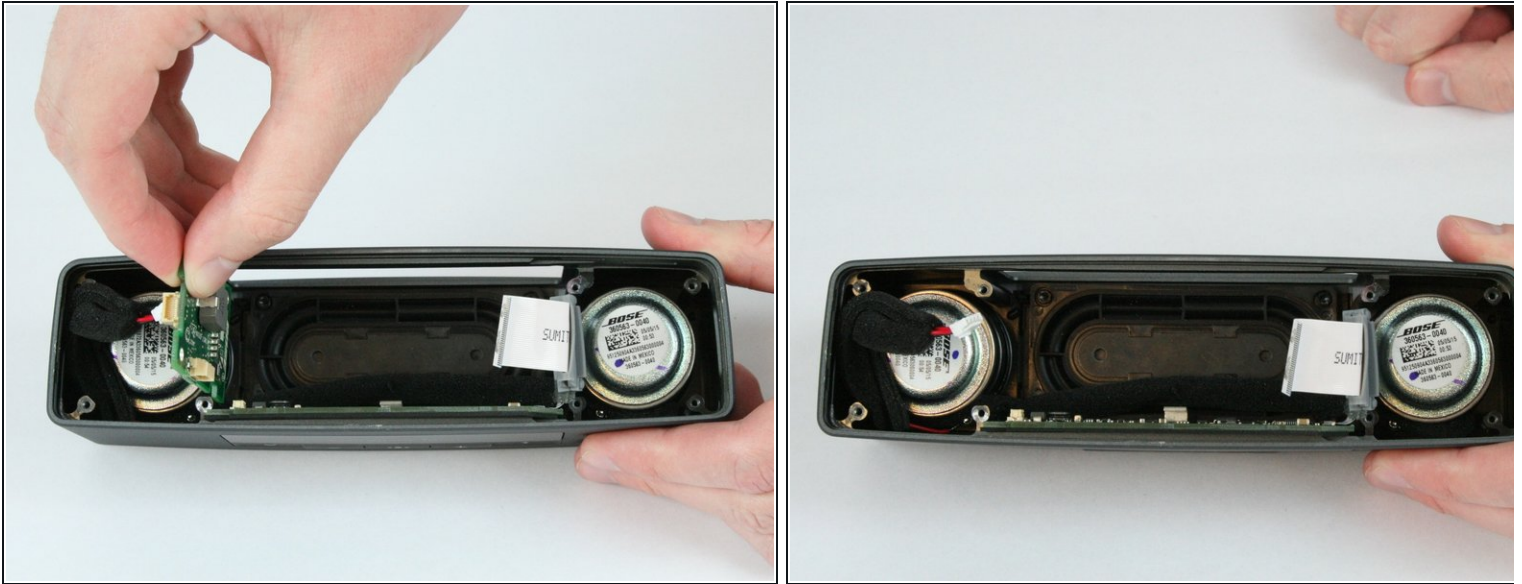


- Remove the top circuit board by lifting up.

⚠ There is a non latched connector connecting the top board to side board. Be careful to not damage this connector during the removal process.

- Disconnect the wired pair from the board upon removal.

Step 11



- Remove the side board by sliding outward from the device.

⚠ There is a non latched connector connecting the side board to button board. Be careful to not damage this connector during the removal process.

Step 12



- Remove the button board by sliding it out gently.

To reassemble your device, follow these instructions in reverse order.