



Canon PowerShot SX600 HS Power and Shutter Buttons Replacement

This will assist in the replacement of the Power and Shutter Buttons in the Canon PowerShot SX600 HS. How to properly be able to take it out and change it.

Written By: Jennyfer Munoz



INTRODUCTION

Canon PowerShot SX600 HS camera, can have a broken or damaged Power and Shutter Button. Problems with the Power and Shutter Button may prevent the camera from turning on or functioning properly. Use this guide when replacing the Power and Shutter Button.



TOOLS:

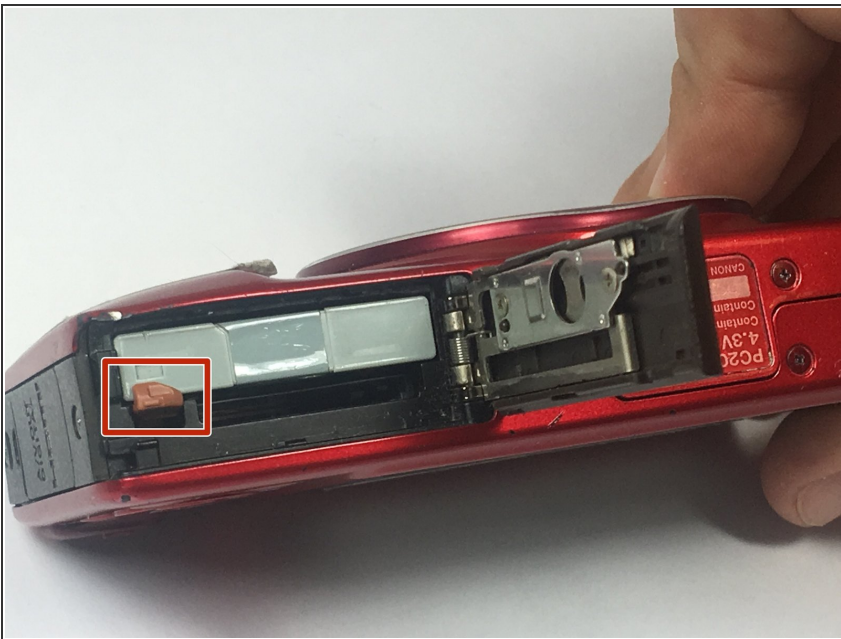
- [iFixit Opening Tools](#) (1)
 - [Phillips #000 Screwdriver](#) (1)
-

Step 1 — Battery



- To remove the battery, locate the battery cover on the bottom of the camera.
- Using your thumb, press down on the cover and slide it outwards.

Step 2



- Depress the orange lever holding the battery in place to unlock it.

Step 3



- Use your fingers to remove the battery.
- ☑ Be sure to remember the alignment of the nodes for reassembly.

Step 4 — Power and Shutter Buttons



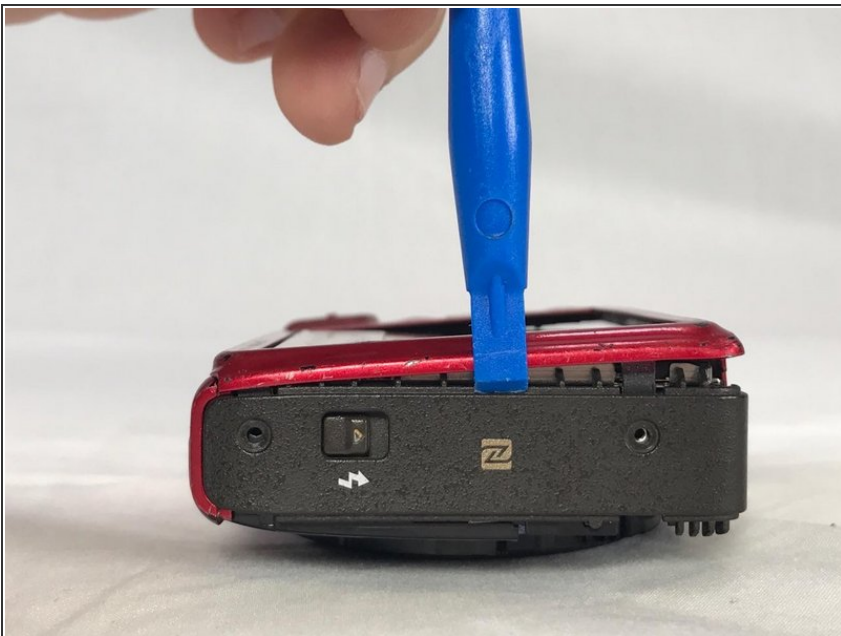
- Use a #000 Phillips screwdriver to unscrew the four 4mm screws located on the sides of the camera (2 for each side).

Step 5



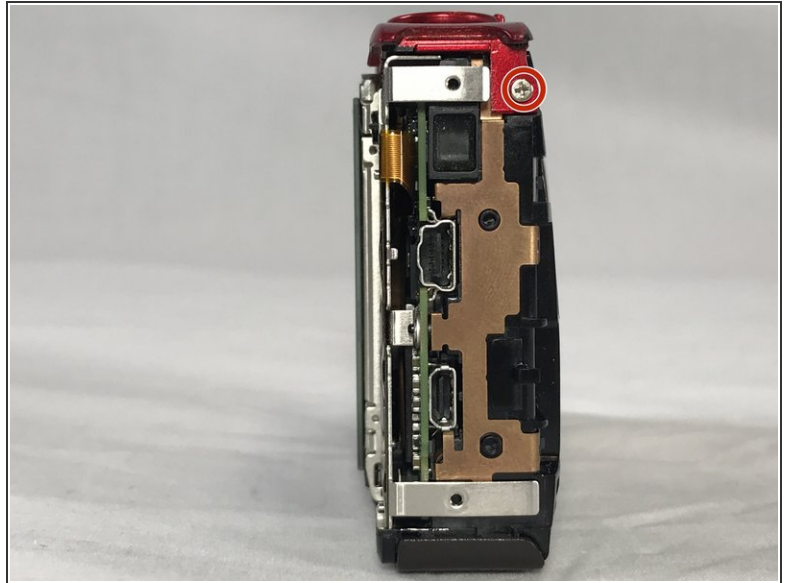
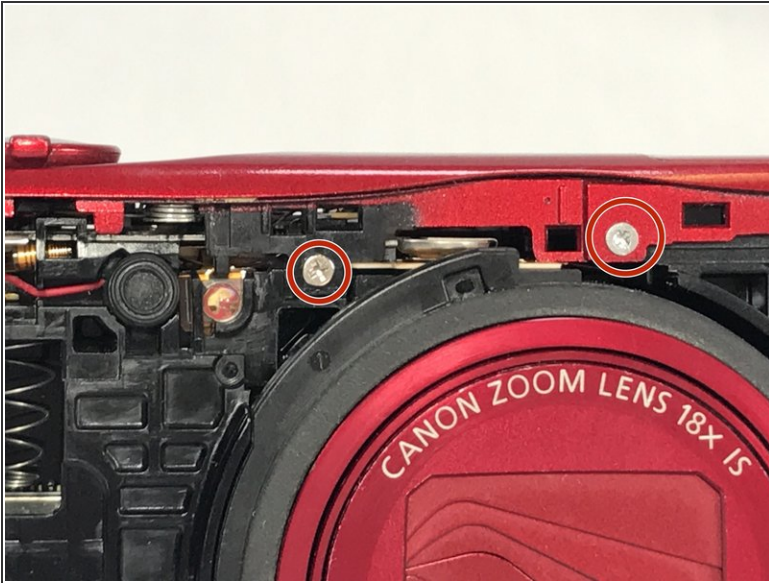
- Unscrew the four 2mm located on the bottom of the camera using a Phillips #000 screwdriver.

Step 6



- Use a plastic opening tool to loosen and remove both the front and back plates of the camera, as well as the two side pieces.

Step 7



- Unscrew the three 2mm screws attaching the piece to the camera frame with a #000 Phillips screwdriver.

Step 8



- Use an opening tool to gently remove the power and shutter button assembly from the frame.

To reassemble your device, follow these instructions in reverse order.

This document was generated on 2020-11-23 05:19:31 AM (MST).

