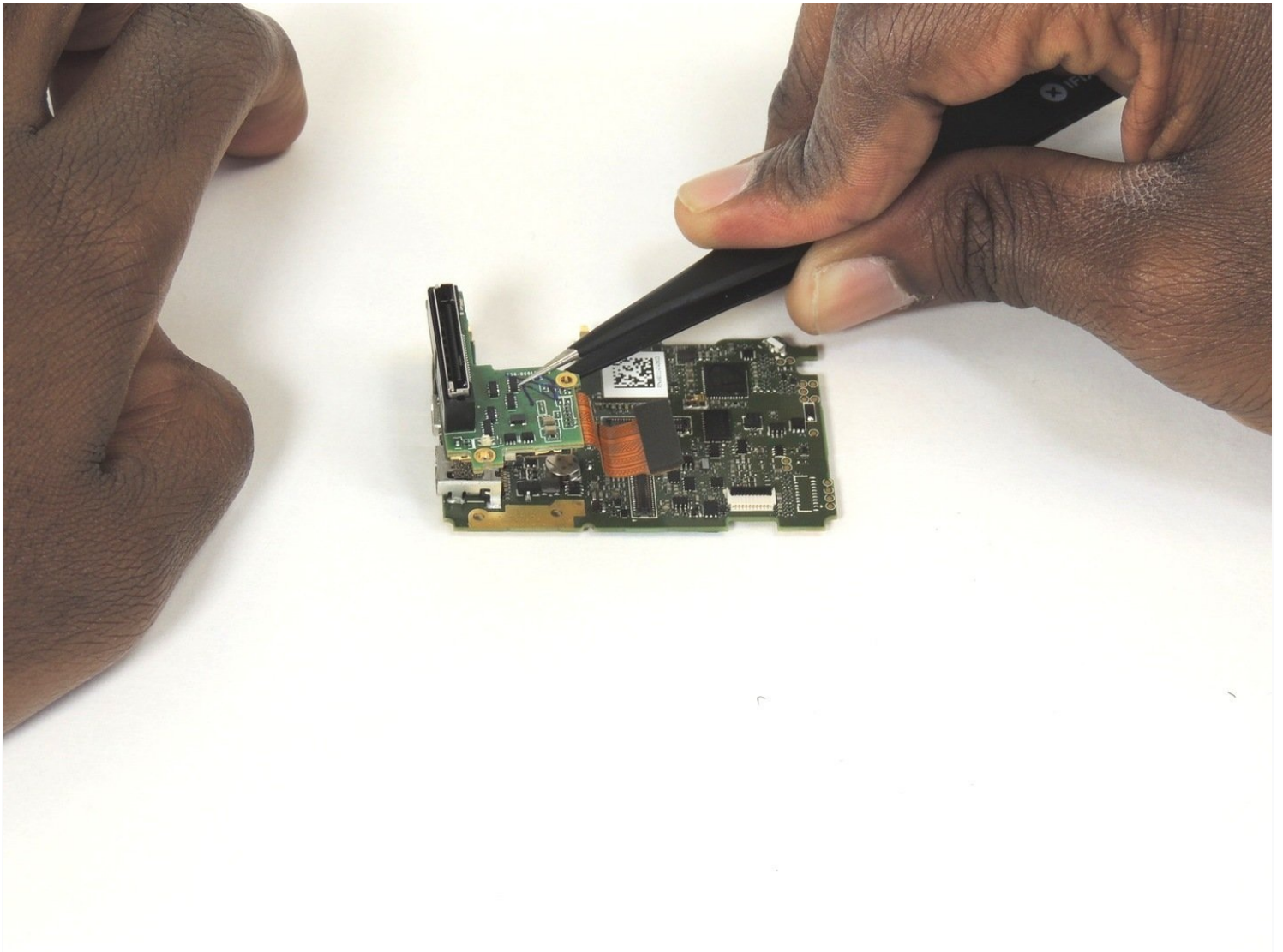




GoPro Hero4 Black Expansion Port/Motherboard Replacement

Use this guide to replace a malfunctioning...

Written By: Jeffrey Goethe



INTRODUCTION

Use this guide to replace a malfunctioning motherboard or expansion port. Because replacing either part requires the same steps, they are both combined into one guide.

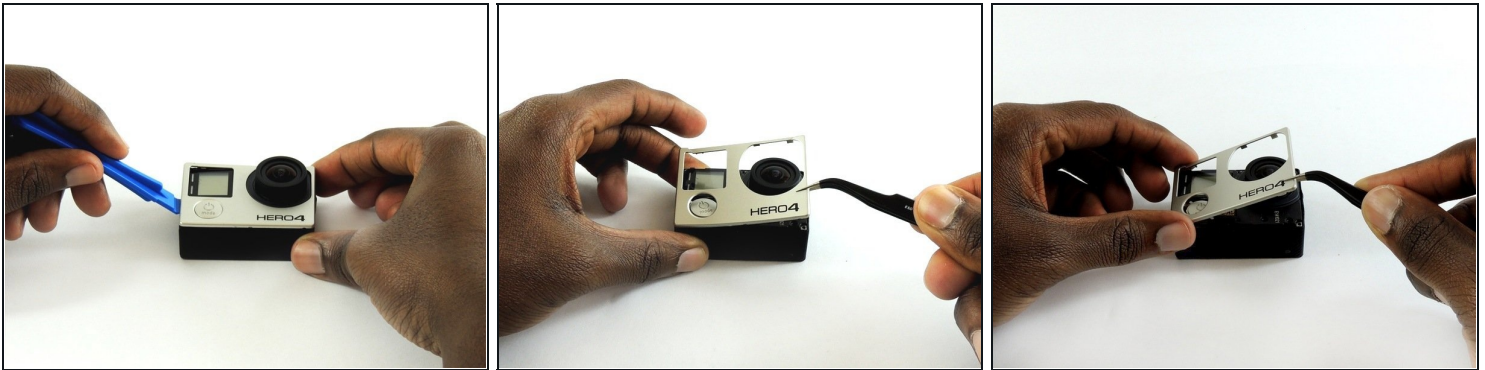
TOOLS:

[iFixit Opening Tool](#) (1)
[Phillips #00 Screwdriver](#) (1)
[Metal Spudger](#) (1)
[Tweezers](#) (1)

PARTS:

[GoPro Hero4 Black Expansion Port](#) (1)

Step 1 — Midframe Housing



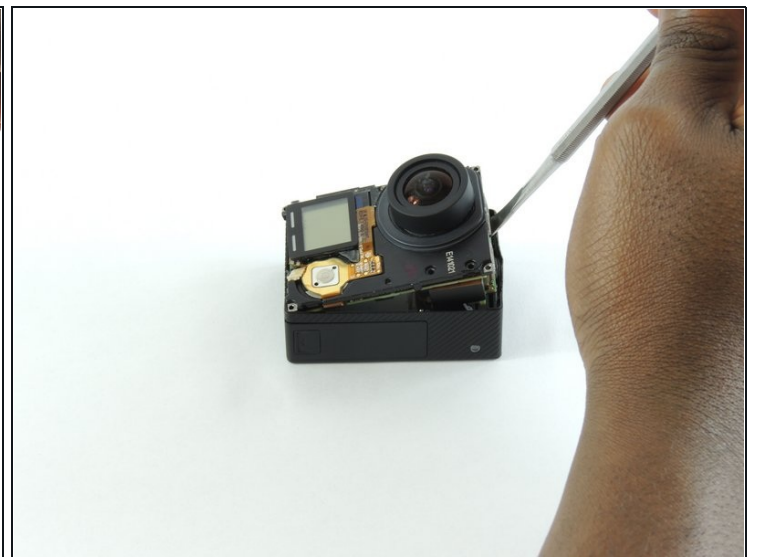
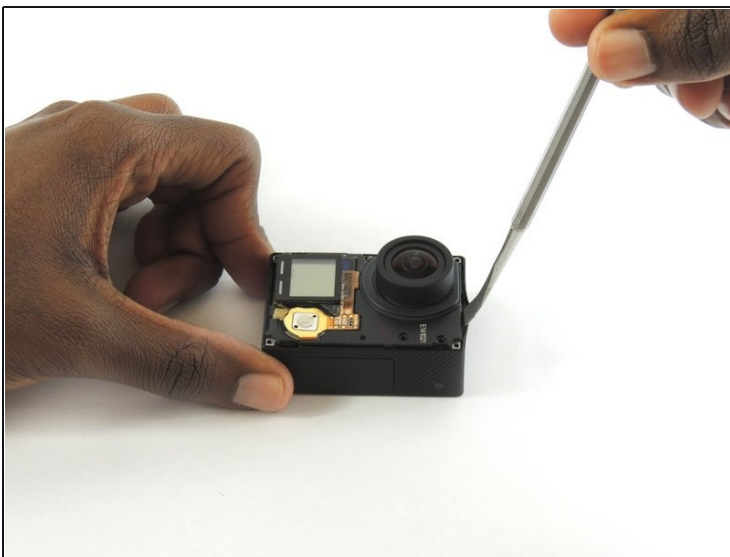
- Remove the faceplate by carefully prying around the edge using a plastic opening tool. Loosen the clips on the edge, then pull the faceplate off.
 - Use the [tweezers](#) to lift the faceplate from the rest of the device.
- ☒ The power button on the front of the GoPro may pop off. Ensure to align it properly during reassembly.

Step 2



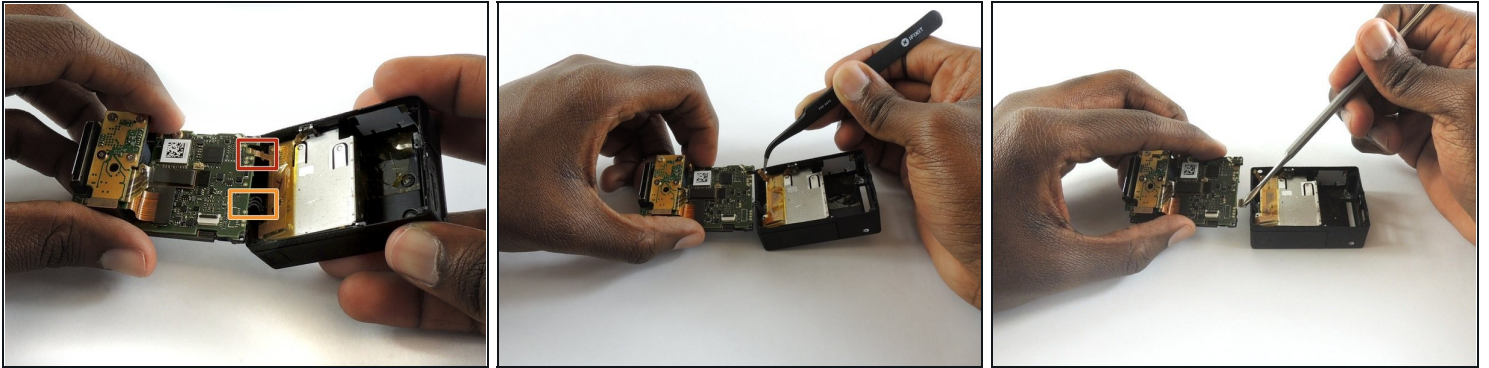
- Using a #00 Phillips head screwdriver, remove the following screws:
 - One 4.6 mm screw
 - Three 8.2 mm screws
 - Two 6.1 mm screws

Step 3



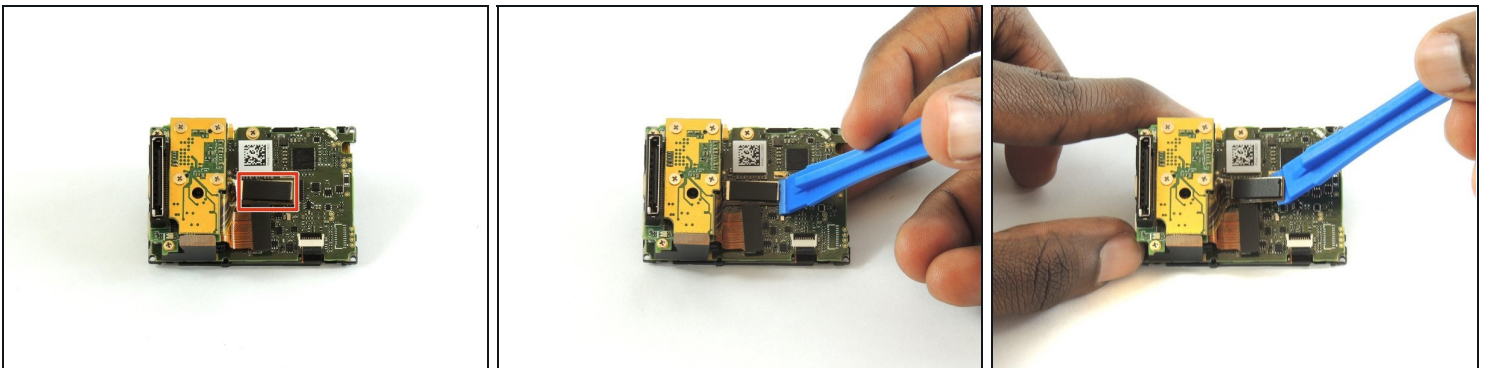
- Insert a metal spudger between the back plastic housing and the camera board assembly. Working around the edge to be careful of the inner components, carefully remove the camera.

Step 4



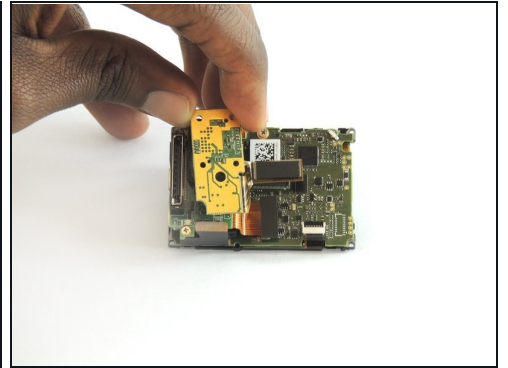
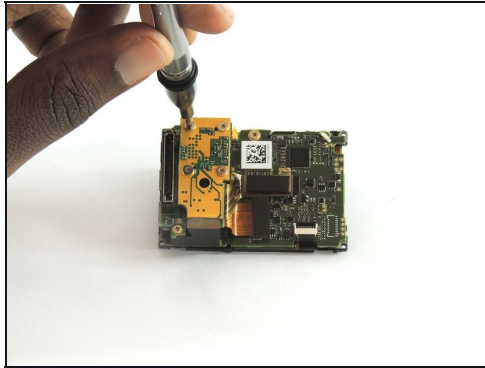
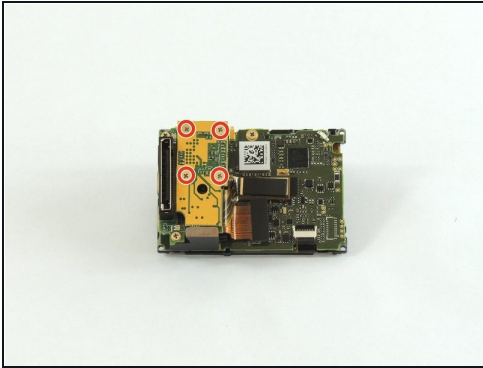
- Using tweezers, remove the ribbon strip by pulling on it. This will remove the connection.
 - Push down on the three wires with the metal spudger and the clip will disconnect from the motherboard.
- ⚠ The clip must be pulled **up and away** from the motherboard. Attempting to slide it out will damage the clip.
- ☑ During reassembly, remove the black tape on the ribbon cable, turn the camera upside down so you can see the port, and reinsert the cable with tweezers. It's a lot easier!

Step 5 — Camera Sensor



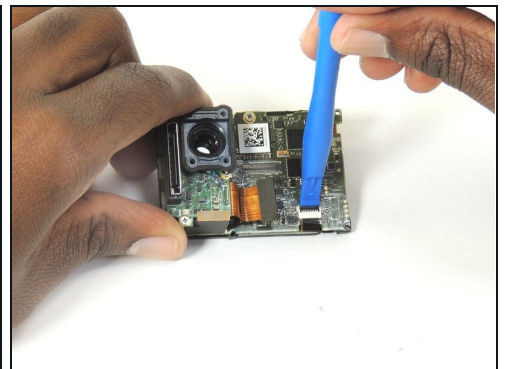
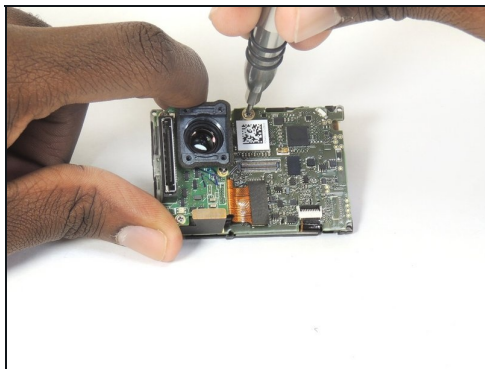
- Using a plastic opening tool, separate the camera sensor's connector from the motherboard.

Step 6



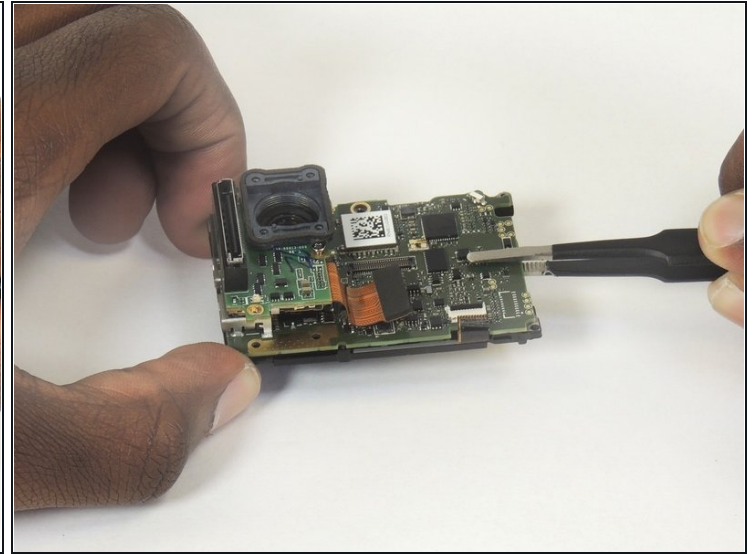
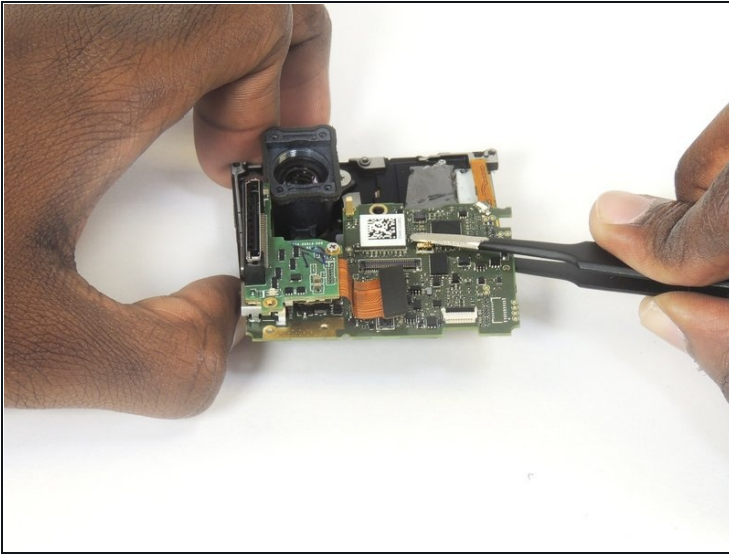
- Using a #00 Phillips head screwdriver, remove the four 3.0mm screws holding the camera sensor.

Step 7 — Expansion Port



- Using #00 phillips head screwdriver, remove the 3.0mm screw.
- Using the plastic opening tool, unclip the LCD ribbon from the motherboard.

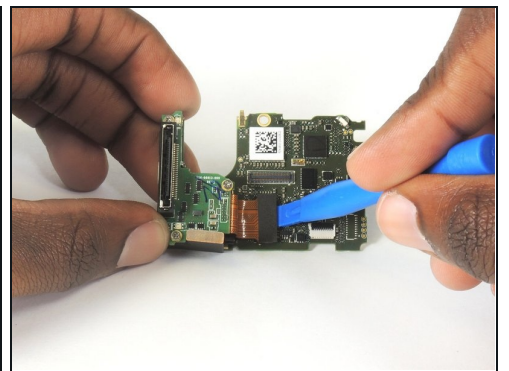
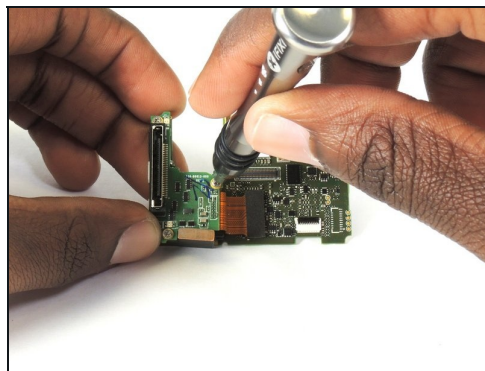
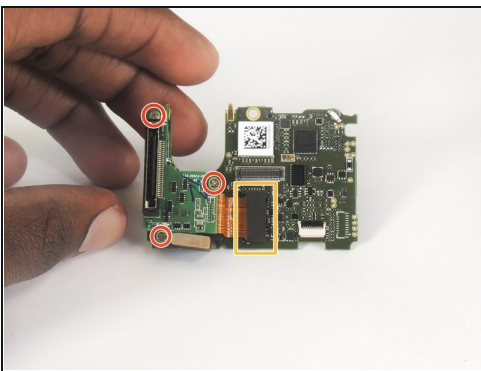
Step 8



- Using [tweezers](#), lift the motherboard from the midframe housing

⚠ It may feel like the board is still attached with a screw or two. Gentle, but firm wiggling will free the board.

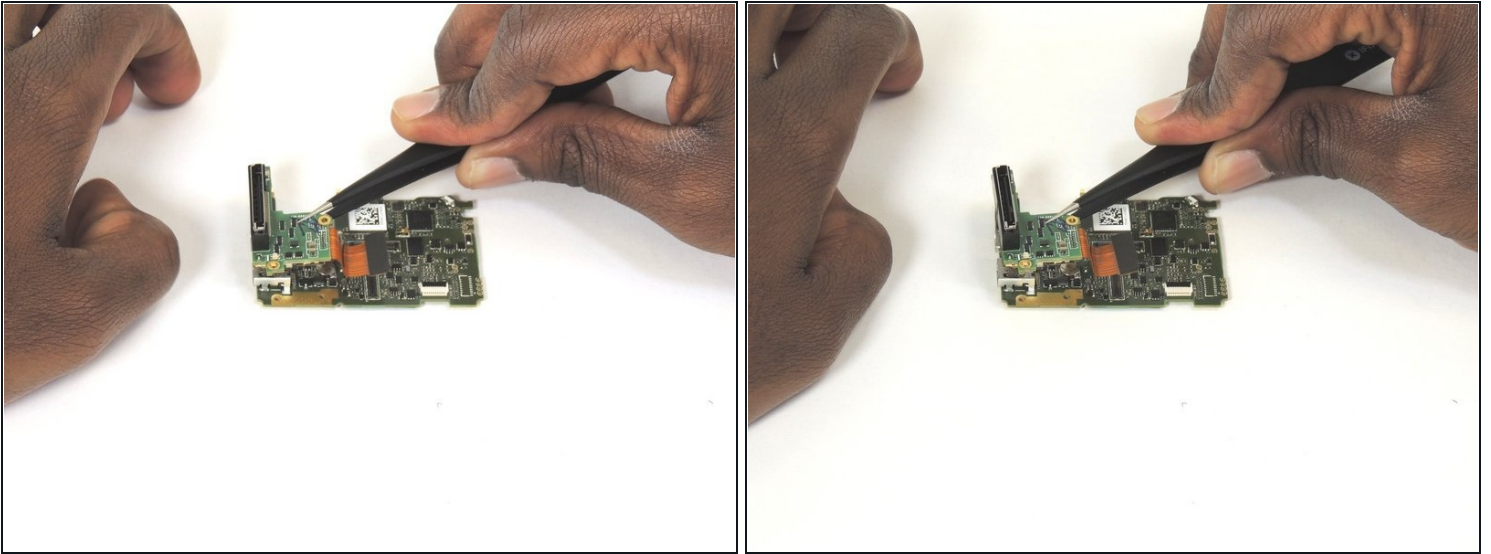
Step 9



- Using #00 phillips head screwdriver, remove the three 4.0mm screws.
- Using plastic opening tool, unclip Expansion Port chip from motherboard

⚠ A metal piece of the frame sits underneath the bottom screw, which will detach upon removing the screw.

Step 10



- Lift the expansion port chip from the motherboard.
- It is now possible to replace the expansion port and/or motherboard.

To reassemble your device, follow these instructions in reverse order.