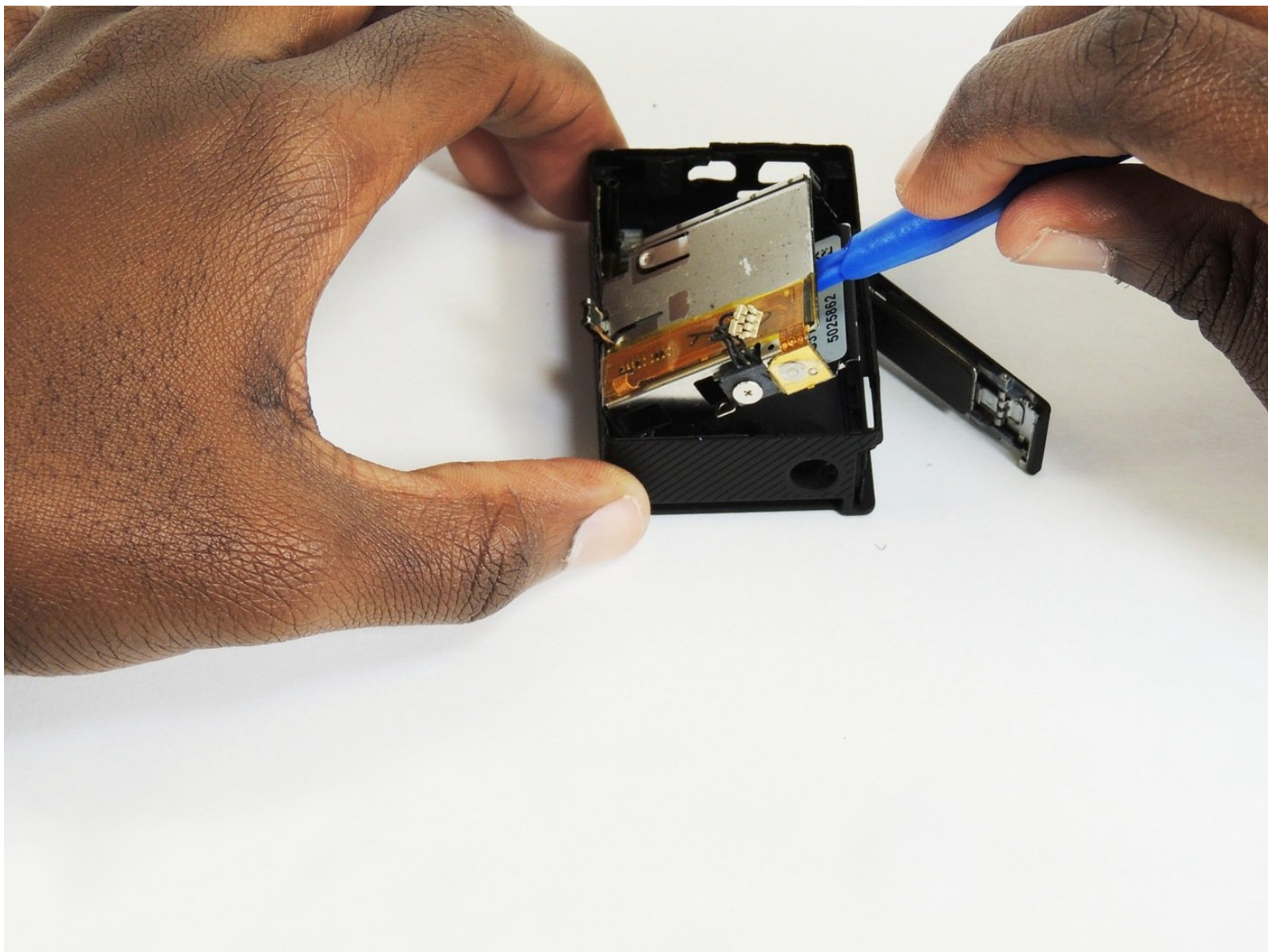




# GoPro Hero4 Black Battery Housing and Rear Frame Replacement

Written By: Thomas Sullivan



## INTRODUCTION

Replace the battery housing when the device will not power on but the battery has been verified to work.



### TOOLS:

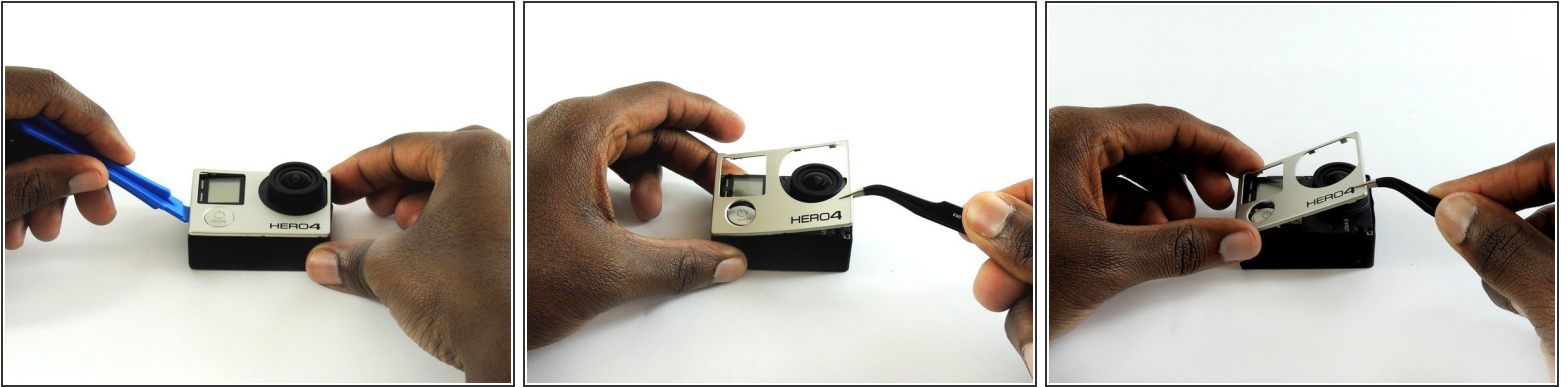
- [Phillips #00 Screwdriver](#) (1)
- [iFixit Opening Tools](#) (1)
- [Metal Spudger](#) (1)
- [Tweezers](#) (1)



### PARTS:

- [GoPro Hero4 Black Battery Enclosure](#) (1)
- [GoPro Hero4 Black Shutter Button](#) (1)

## Step 1 — Midframe Housing



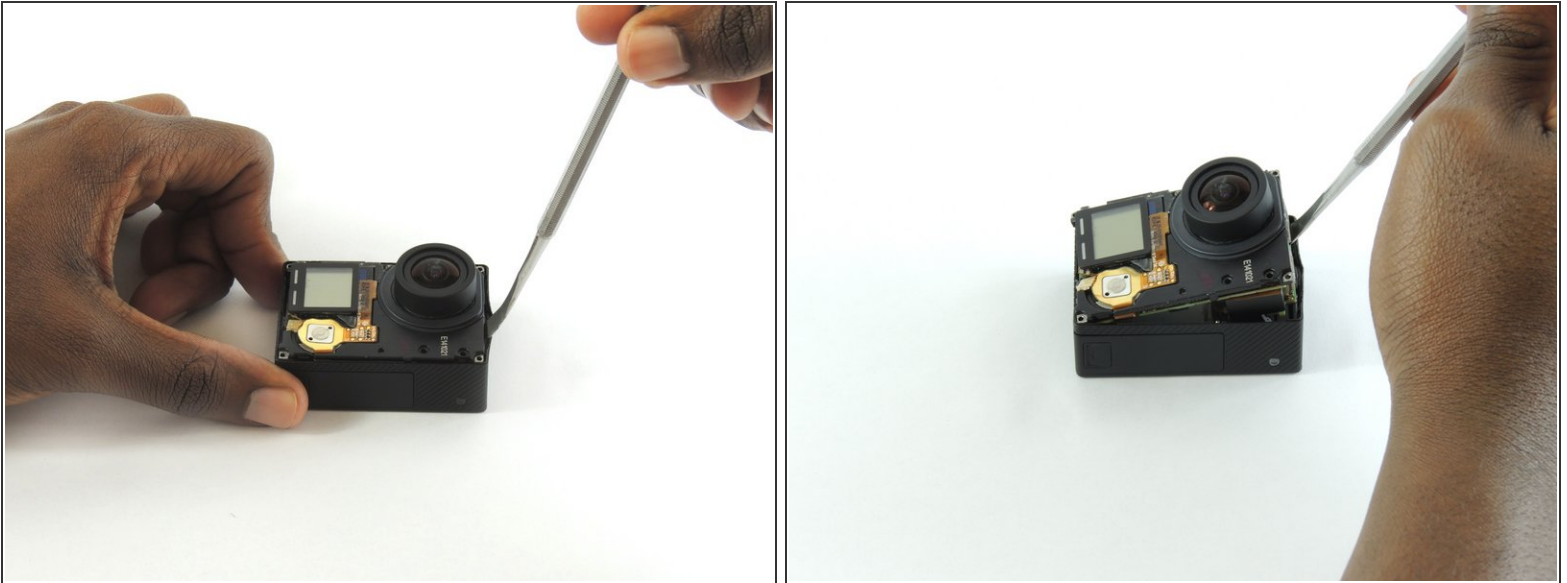
- Remove the faceplate by carefully prying around the edge using a plastic opening tool. Loosen the clips on the edge, then pull the faceplate off.
  - Use the tweezers to lift the faceplate from the rest of the device.
- ☒ The power button on the front of the GoPro may pop off. Ensure to align it properly during reassembly.

## Step 2



- Using a #00 Phillips head screwdriver, remove the following screws:
  - One 4.6 mm screw
  - Three 8.2 mm screws
  - Two 6.1 mm screws

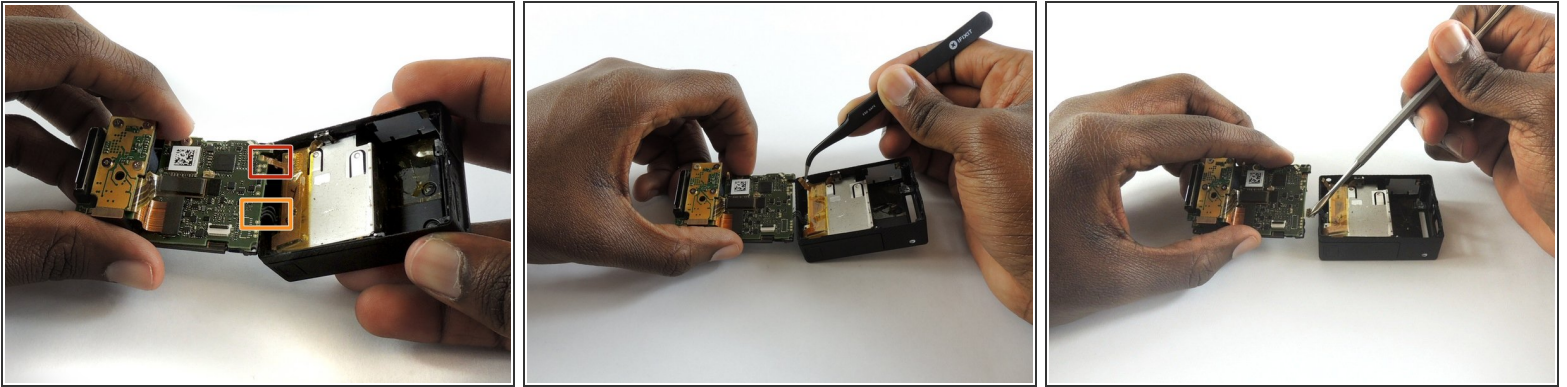
## Step 3



- Insert a metal spudger between the back plastic housing and the camera board assembly. Working around the edge to be careful of the inner components, carefully remove the camera.

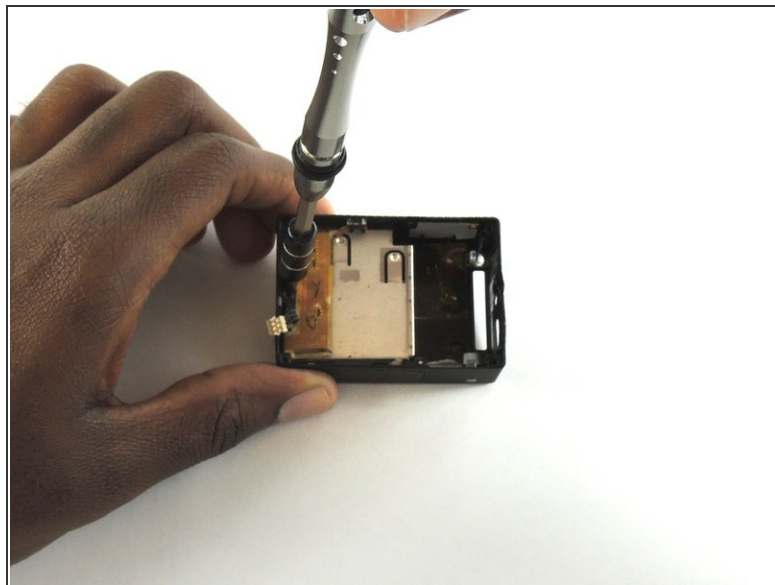
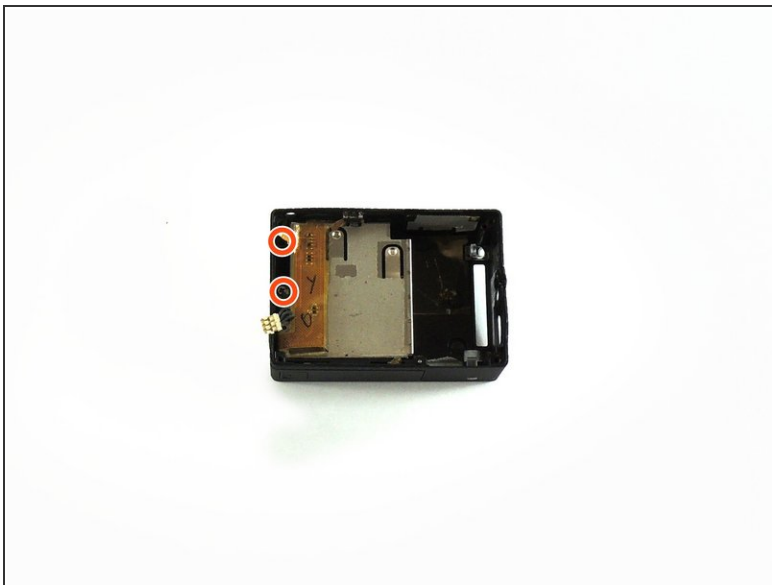


## Step 4



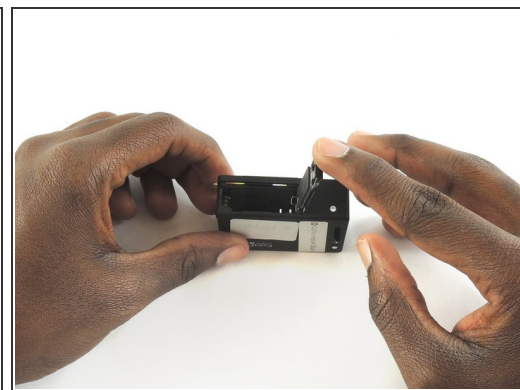
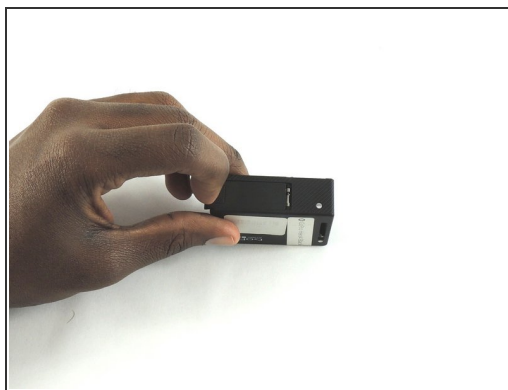
- Using tweezers, remove the ribbon strip by pulling on it. This will remove the connection.
  - Push down on the three wires with the metal spudger and the clip will disconnect from the motherboard.
- ⚠ The clip must be pulled **up and away** from the motherboard. Attempting to slide it out will damage the clip.
- ★ During reassembly, remove the black tape on the ribbon cable, turn the camera upside down so you can see the port, and reinsert the cable with tweezers. It's a lot easier!

## Step 5 — Battery Housing and Rear Frame



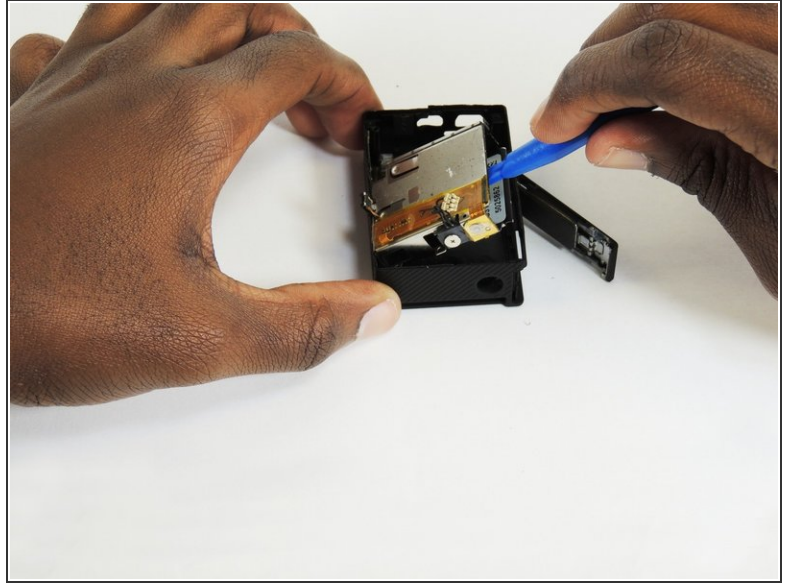
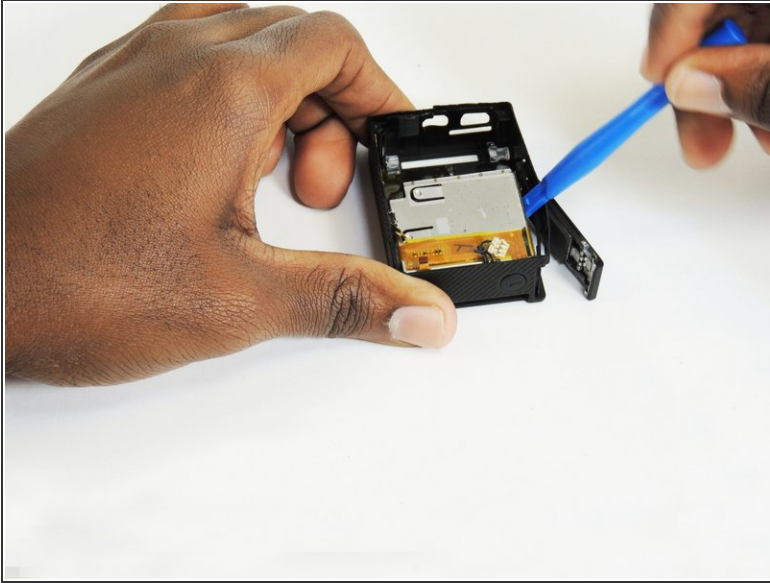
- Using a #00 phillips head screwdriver, remove the two 3.0mm screws
- ⓘ The top screw is missing from our device, but it is in the approximate location of the top circle.

## Step 6



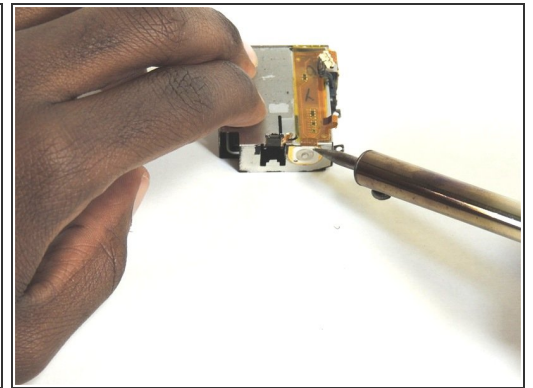
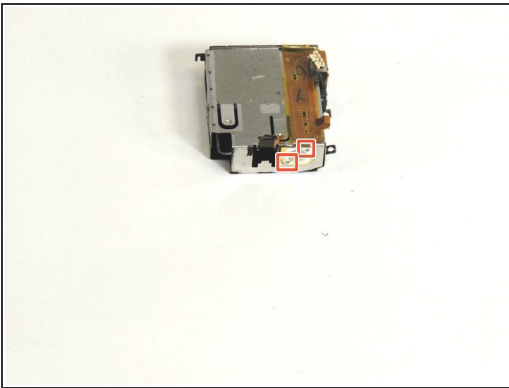
- Be sure to lift the battery cover before proceeding.

## Step 7



- Using plastic opening tool, pry battery housing from the rear frame.
- ⓘ When prying the housing off, the record and setting buttons may fall off.

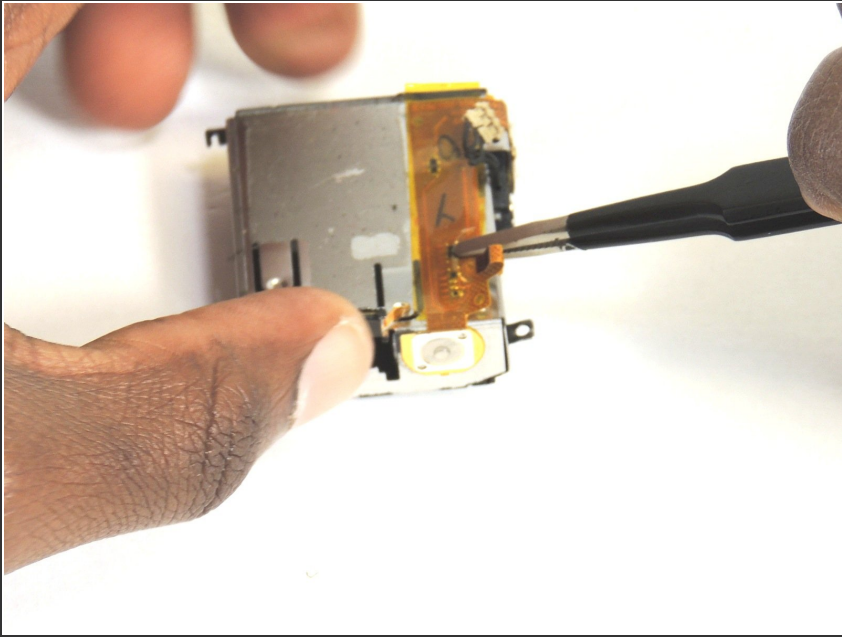
## Step 8



- De-solder the shutter button board from the battery enclosure.
- ⓘ In case you are new to soldering, here is [ifixit's soldering guide](#)
- ⓘ 3rd party sellers have the battery housing with the shutter button board already attached. If you have purchased this, begin reassembly.



## Step 9



- Using tweezers, carefully remove the shutter button board the rest of the way from the battery housing.

To reassemble your device, follow these instructions in reverse order.