



Samsung Galaxy S6 Active Rear Camera Replacement

Replacing the rear camera of your phone.

Written By: Lucia Valbuena



INTRODUCTION

Use this guide to remove and replace the rear camera lens from your phone.



TOOLS:

- [iFixit Opening Tools](#) (1)
 - [iOpener](#) (1)
 - [Suction Handle](#) (1)
 - [Tweezers](#) (1)
 - [JIS Driver Set](#) (1)
-

Step 1 — SIM Card



- Insert your fingernail or a plastic opening tool into the pivot on the side of the SIM tray.
- Pry open the tray to get it out of the socket.

Step 2




- Remove the SIM tray with SIM card from the phone.

Step 3 — Display Assembly



- Heat the front face (sides, top, bottom) of the phone with the iOpener, a hair dryer, or a heat gun for 60 seconds to loosen the adhesive around the edge of the glass.

 If using an iOpener, heat it in a microwave for thirty seconds.

Step 4



- Attach a suction cup to the lower half of the screen.

Step 5



- Using the suction cup, pull gently the lower half of the panel.

⚠ If you pull too hard you may break the display. If you still feel resistance repeat Step 3, leaving the iOpener on longer.

Step 6




- Once you've opened a large enough gap, insert a plastic tool at the bottom, between the glass and the rest of frame of the phone.
- Slide the plastic opening tool around the screen, prying the display gently away from the body

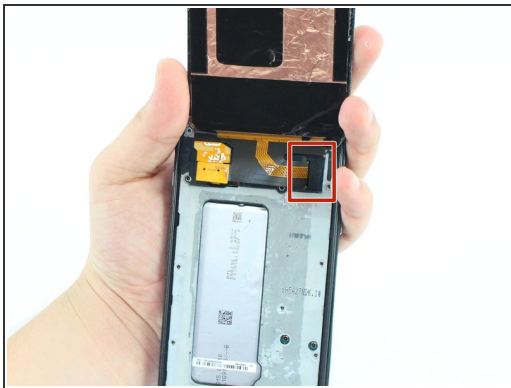
Step 7



- Pull the lower half of the screen with the suction cup while holding down the frame of the phone to separate both components.

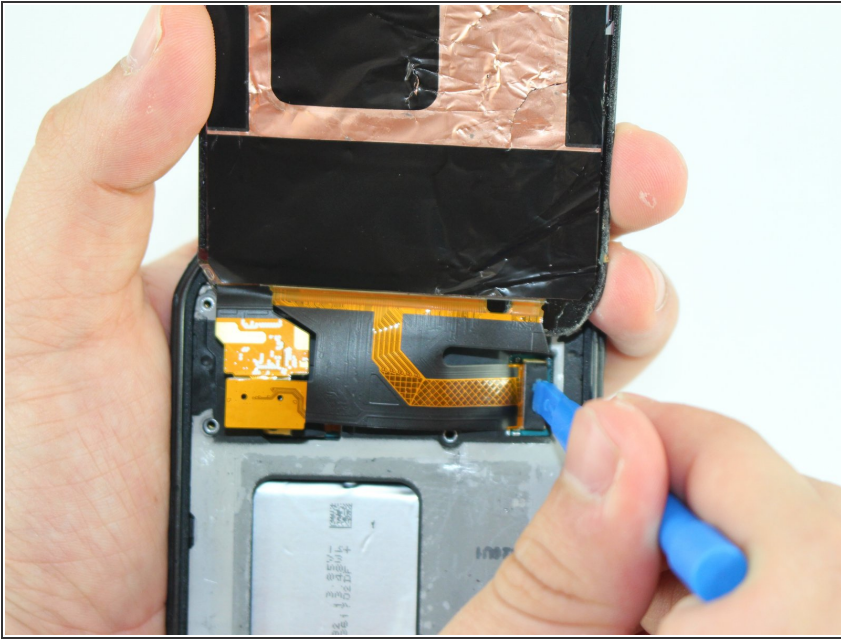
 Only lift the lower part of the screen. It is connected with a clip to the top of the motherboard and can rip off if you pull too hard.

Step 8



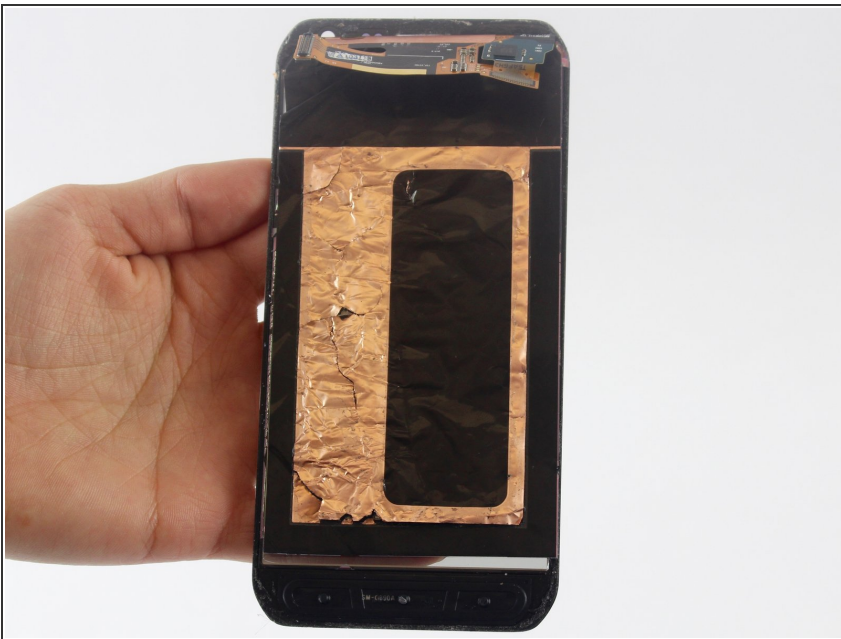
- Once the glass is off, you will see a small clip covering the screen connection to the motherboard at the top of the phone. Use tweezers to grab the clip by the crease on its side and pull it out.

Step 9



- Undo the screen connection with a plastic tool.

Step 10



- Remove the display assembly (LCD and Digitizer).

Step 11 — Battery



- Use the Phillips Head Screwdriver sized PH000 to remove the sixteen 4mm screws from the frame.

Step 12



- Put a little pressure on the top, on the bottom, and on the sides of the phone to separate the rear case.
- ⓘ You will hear the clips start undoing themselves.

Step 13



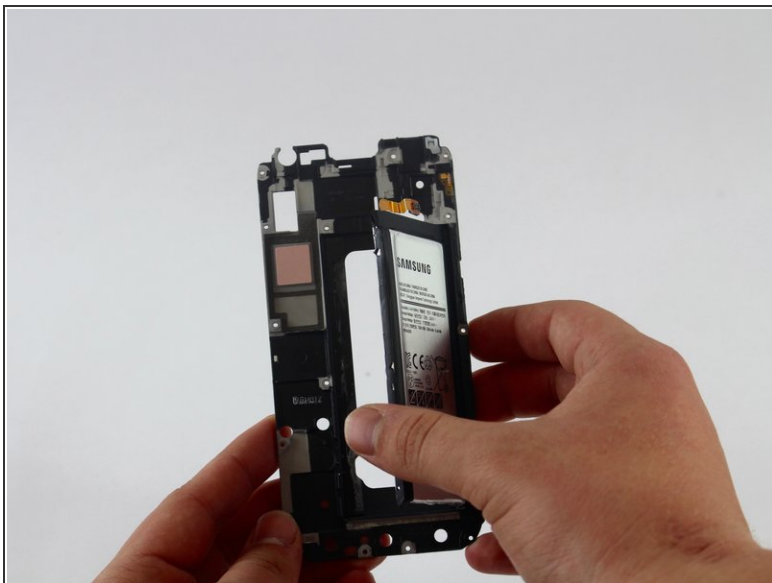
- Once all the clips have popped, pull out the rear case to separate it from the frame with the battery.
- The battery will be on the back side of this frame.

Step 14



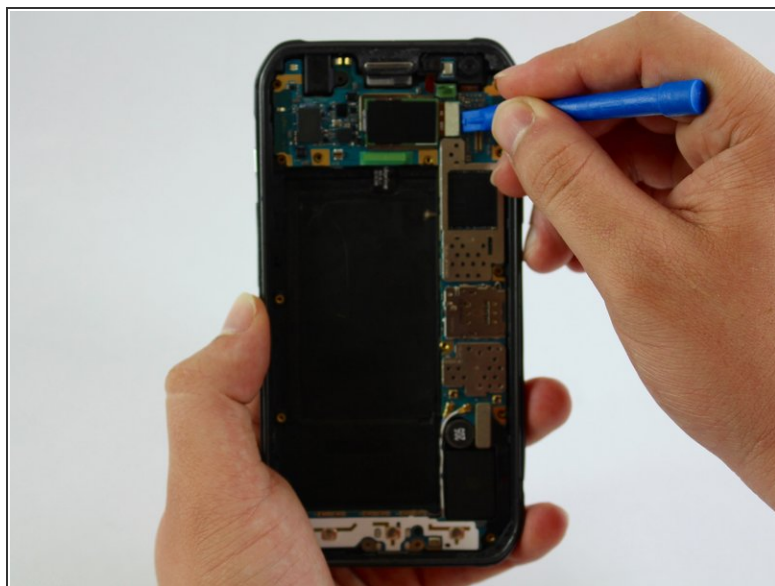
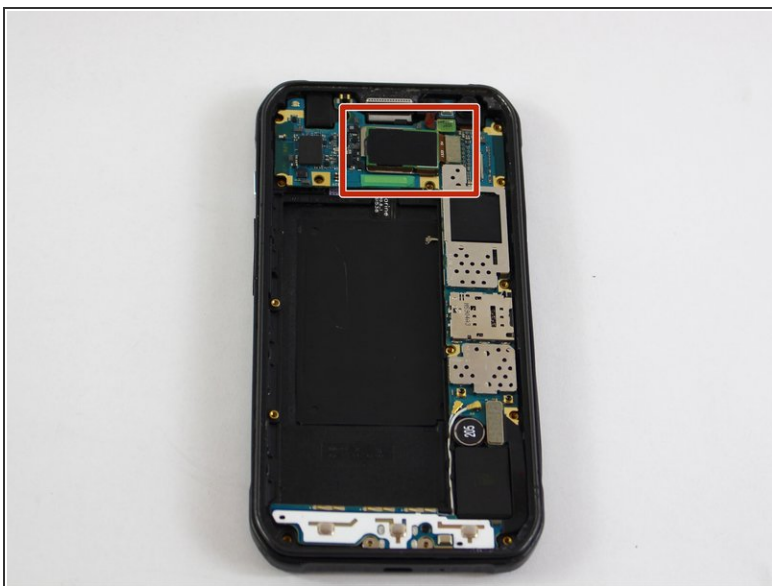
- Insert a plastic opening tool on the side of the frame and pull out the battery.

Step 15



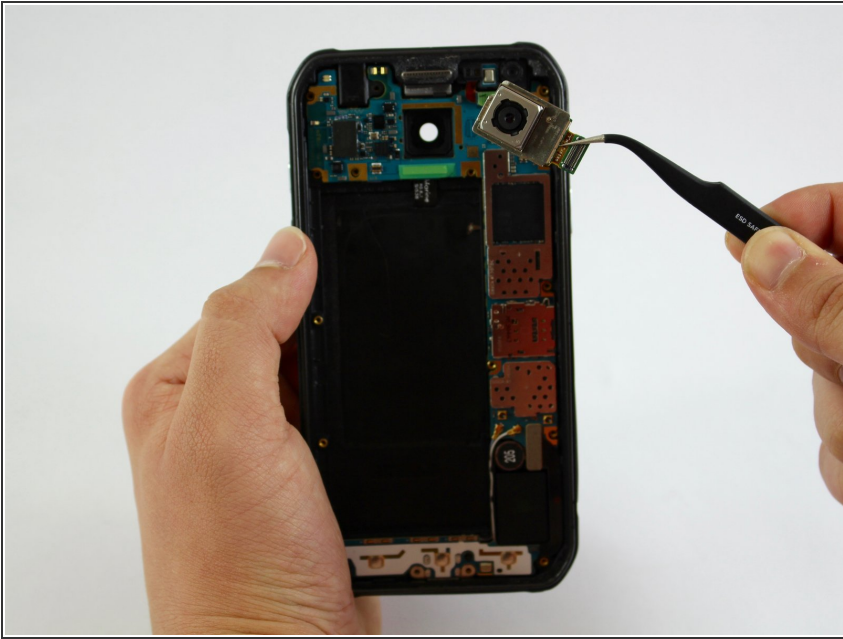
- Remove the battery from the frame.

Step 16 — Rear Camera



- The rear camera will be attached to the motherboard on the rear case.
- Use a plastic tool to undo the connection of the rear camera from the motherboard.

Step 17



- Use the tweezers to remove rear camera from motherboard.

To reassemble your device, follow these instructions in reverse order.