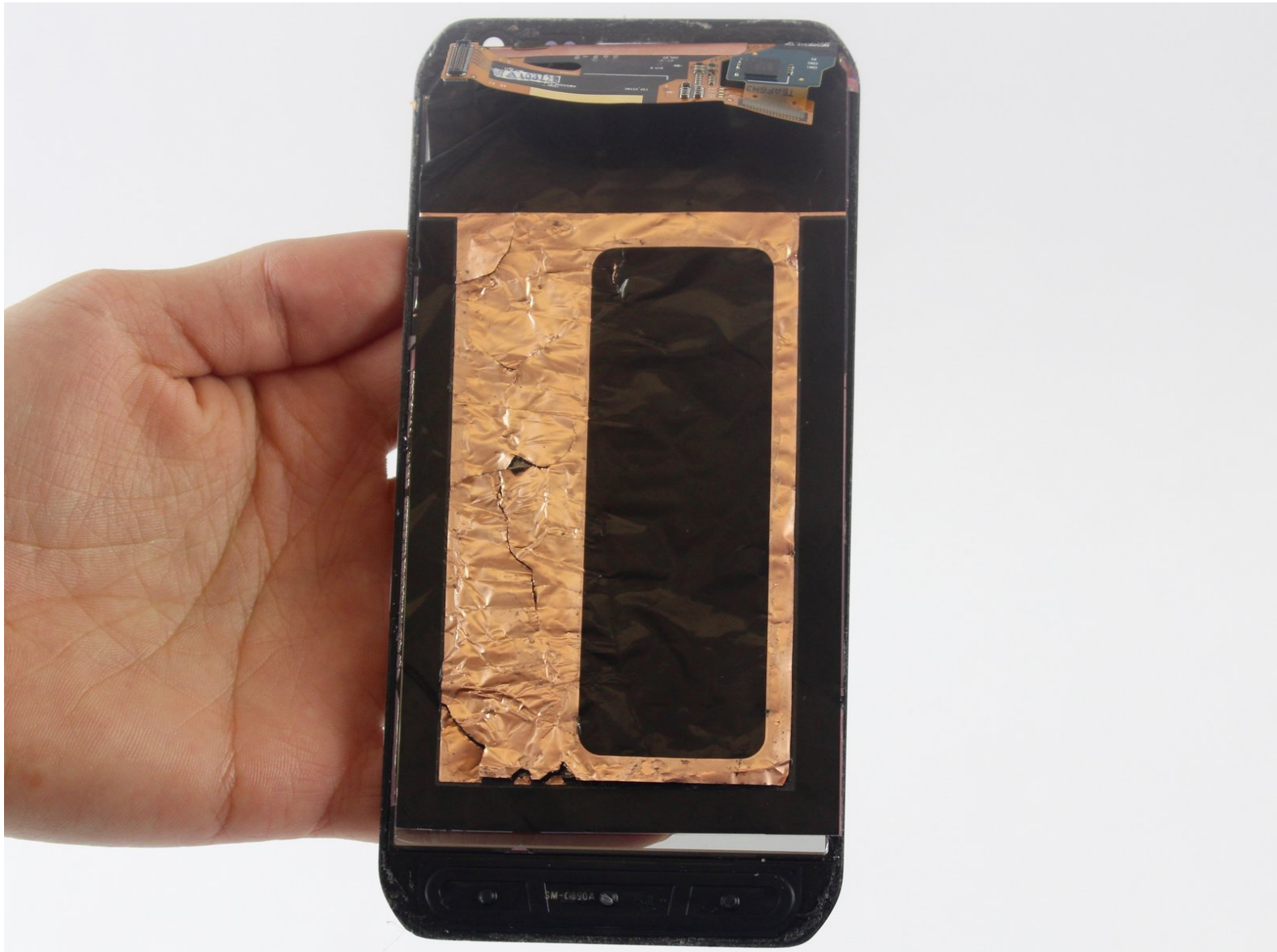




# Samsung Galaxy S6 Active Display Assembly Replacement

Removing the Display Assembly that consists of the LCD and the Digitizer.

Written By: Lucia Valbuena



---

## INTRODUCTION

This guide instructs you to remove the Display Assembly, which consists of the LCD and the Digitizer. After removing this assembly, you will be able to access other parts of your phone as well.

---

### **TOOLS:**

- [iOpener](#) (1)
  - [Suction Handle](#) (1)
  - [iFixit Opening Tools](#) (1)
-

## Step 1 — SIM Card



- Insert your fingernail or a plastic opening tool into the pivot on the side of the SIM tray.
- Pry open the tray to get it out of the socket.

## Step 2




- Remove the SIM tray with SIM card from the phone.

## Step 3 — Display Assembly



- Heat the front face (sides, top, bottom) of the phone with the iOpener, a hair dryer, or a heat gun for 60 seconds to loosen the adhesive around the edge of the glass.

 If using an iOpener, heat it in a microwave for thirty seconds.

## Step 4




- Attach a suction cup to the lower half of the screen.



## Step 5



- Using the suction cup, pull gently the lower half of the panel.

 If you pull too hard you may break the display. If you still feel resistance repeat Step 3, leaving the iOpener on longer.

## Step 6




- Once you've opened a large enough gap, insert a plastic tool at the bottom, between the glass and the rest of frame of the phone.
- Slide the plastic opening tool around the screen, prying the display gently away from the body

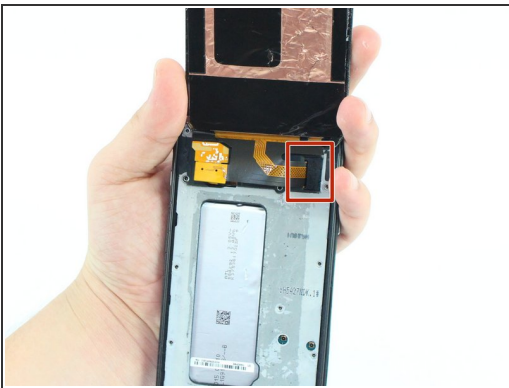
## Step 7



- Pull the lower half of the screen screen with the suction cup while holding down the frame of the phone to separate both components.

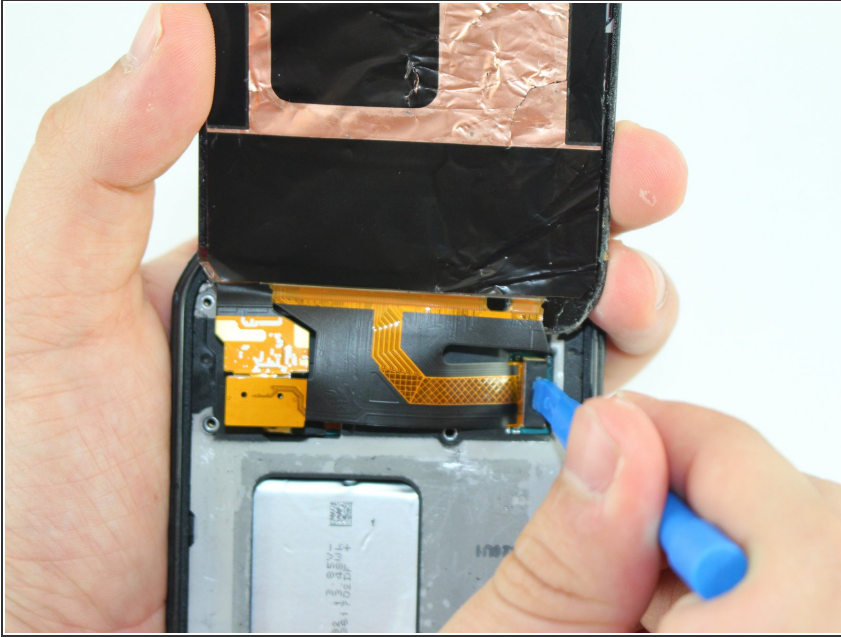
 Only lift the lower part of the screen. It is connected with a clip to the top of the motherboard and can rip off if you pull too hard.

## Step 8



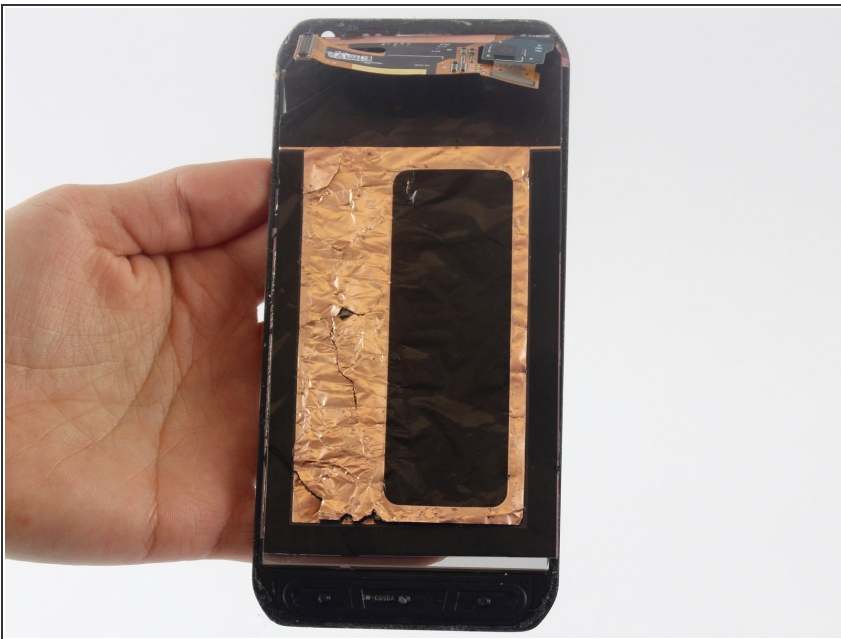
- Once the glass is off, you will see a small clip covering the screen connection to the motherboard at the top of the phone. Use tweezers to grab the clip by the crease on its side and pull it out.

## Step 9



- Undo the screen connection with a plastic tool.

## Step 10



- Remove the display assembly (LCD and Digitizer).

To reassemble your device, follow these instructions in reverse order.