



Bem Wireless HL2739B Speaker Battery Replacement

Is your wireless speaker losing charge in the...

Written By: John Donovan



INTRODUCTION

Is your wireless speaker losing charge in the chorus of your favorite song? Follow these steps to replace your battery and keep rocking!

TOOLS:

[Metal Spudger](#) (1)

[Tweezers](#) (1)

Flat

[iFixit Opening Tool](#) (1)

[J1 Screwdriver Bit](#) (1)

Step 1 — Speaker Battery



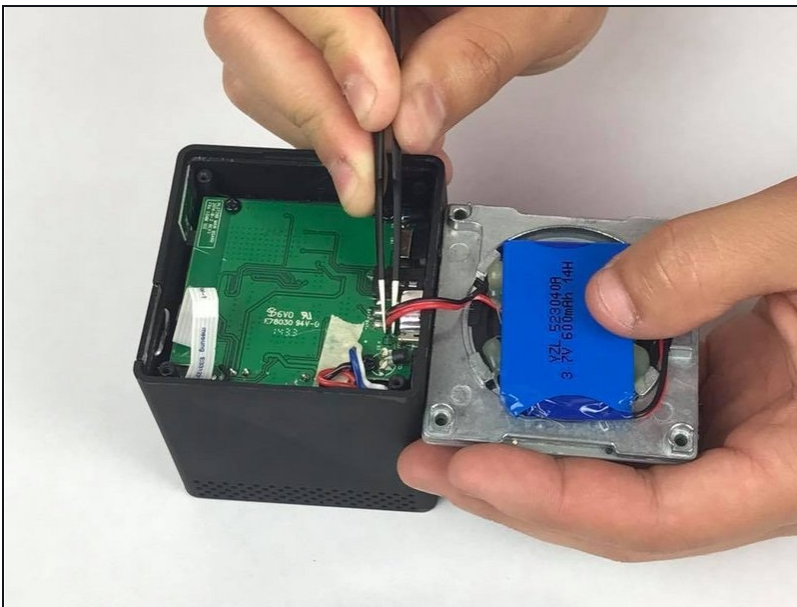
- Peel the rubber cover back from the corner of the speaker to reveal the screw.
- Repeat for the three remaining corners.

Step 2



- Use the J1 bit attached to the screwdriver to remove the four 10mm screws from the bottom of the speaker.

Step 3



- Lift the bottom cover away from the rest of the speaker.

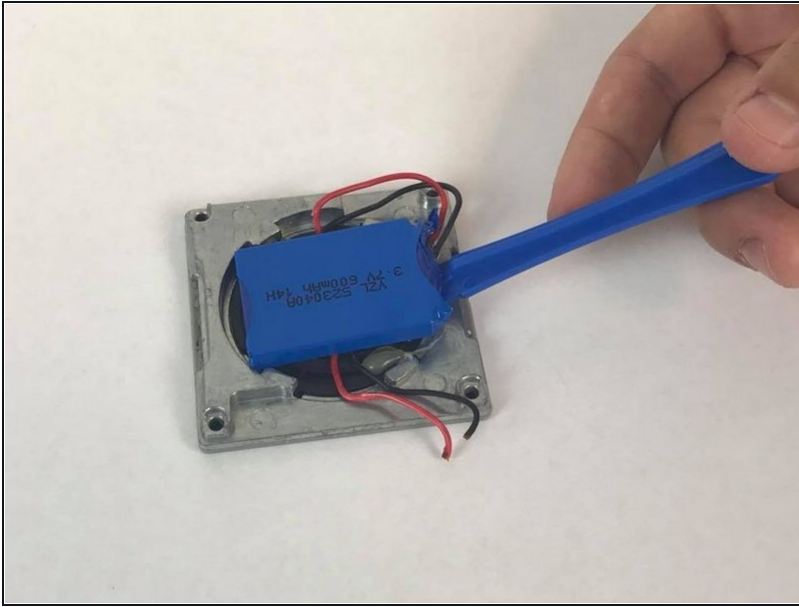
⚠ There are wires connecting the battery and cover to the rest of the speaker. Be careful when removing the base cover.

- Using the [tweezers](#), pull the wires from the speaker's internal chip.

⚠ Be careful not to damage the chip when you remove the wires.

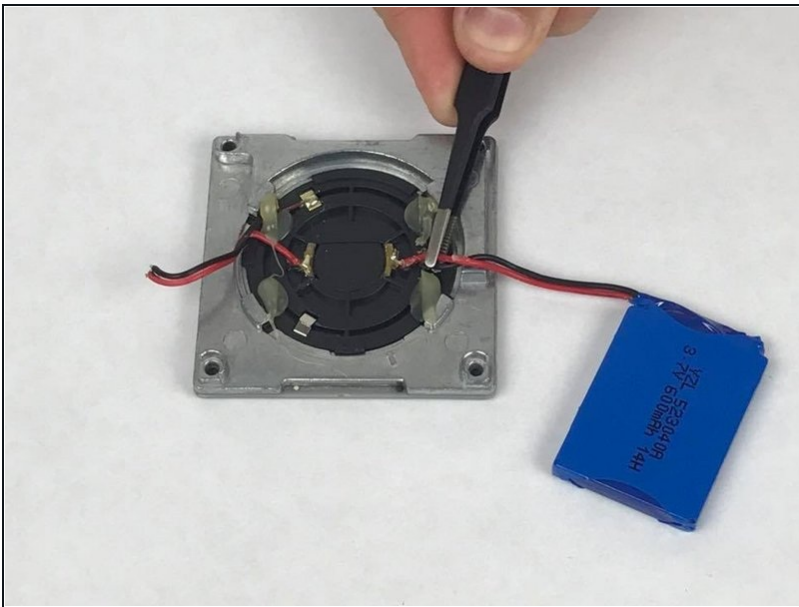
- ① It will likely require soldering to reassemble the speaker after this step.

Step 4



- Using a plastic opening tool, gently pry the battery from the metal base.

Step 5



- Using tweezers, pull the wires from the metal base connection.

To reassemble your device, follow these instructions in reverse order.