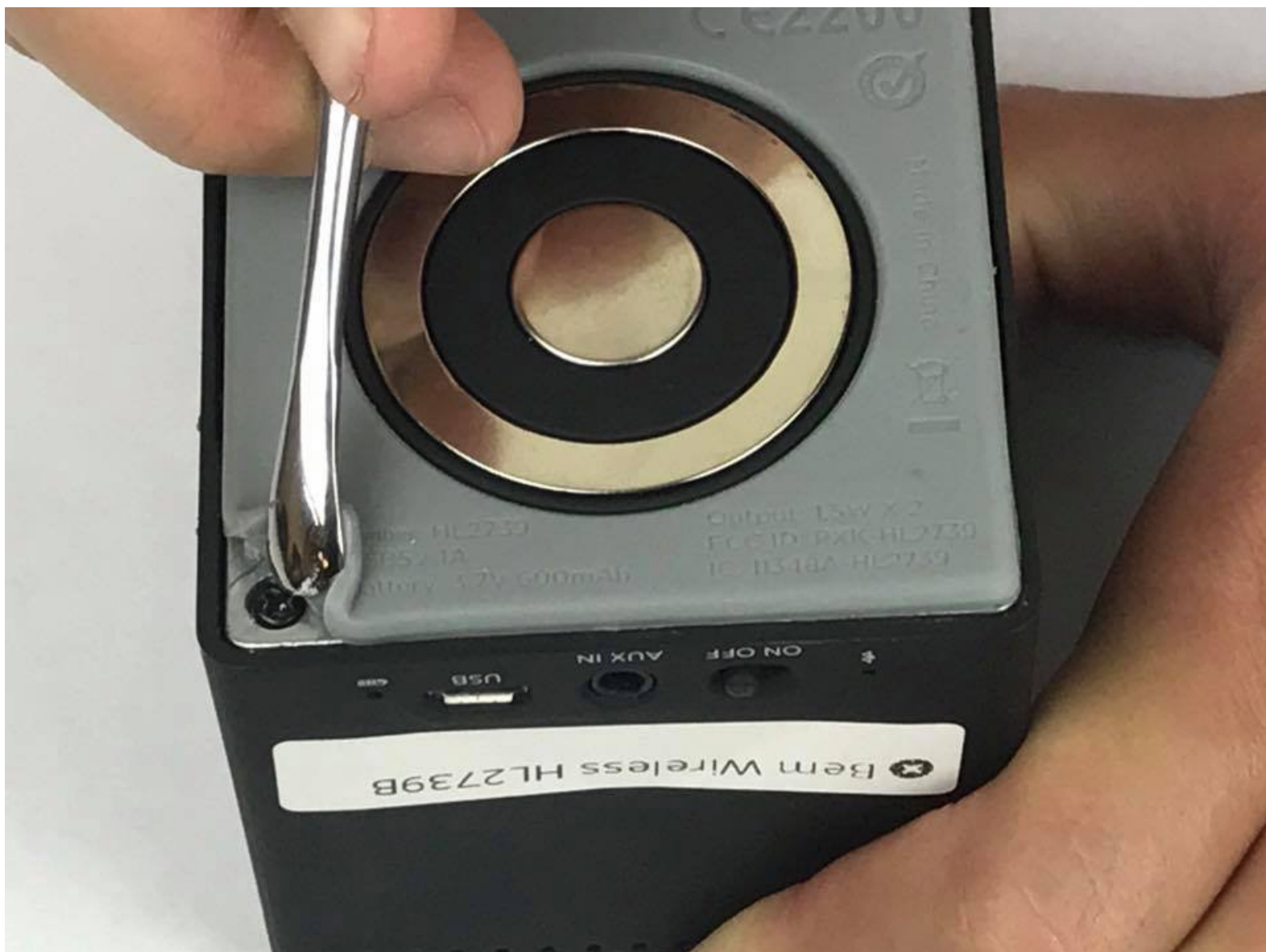




# Bem Wireless HL2739B Speaker Battery Replacement

This guide is to instruct users how to remove and replace the battery in the Bem Wireless HL2739B Speaker.

Written By: John Donovan



---

## INTRODUCTION

Is your wireless speaker losing charge in the chorus of your favorite song? Follow these steps to replace your battery and keep rocking!

---

### **TOOLS:**

- [Metal Spudger](#) (1)
- [Tweezers](#) (1)

Flat

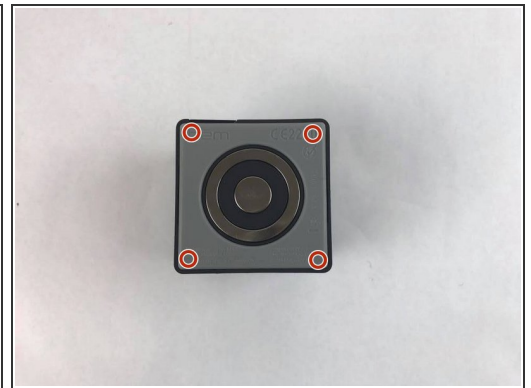
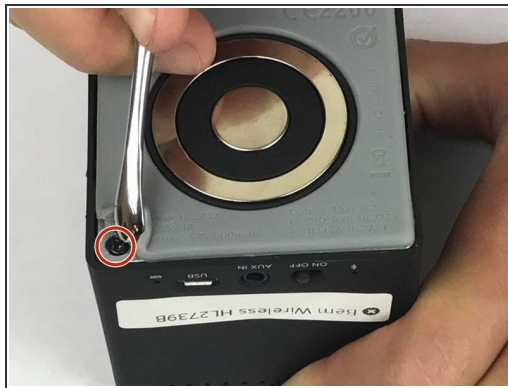
- [iFixit Opening Tools](#) (1)
  - [J1 Screwdriver Bit](#) (1)
-

## Step 1 — Speaker Battery



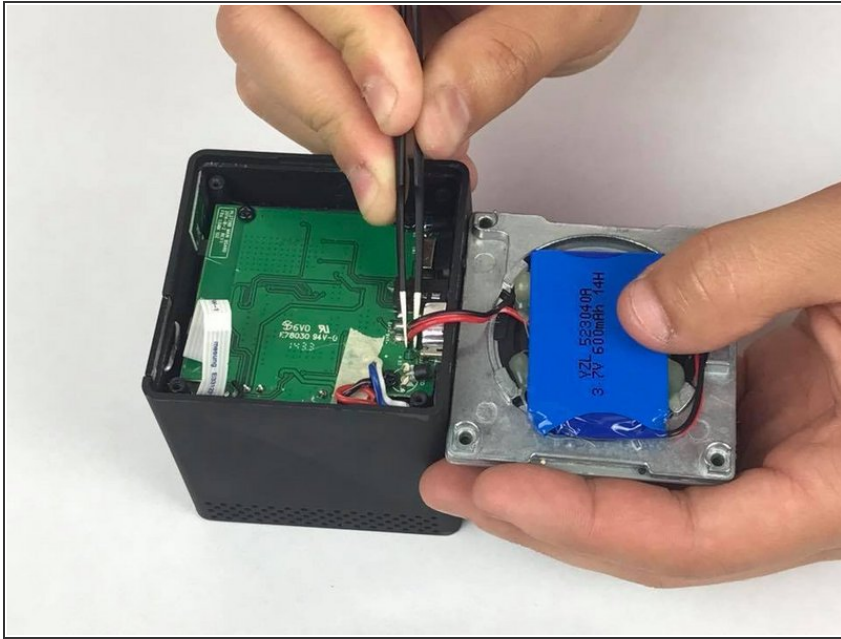
- Peel the rubber cover back from the corner of the speaker to reveal the screw.
- Repeat for the three remaining corners.

## Step 2



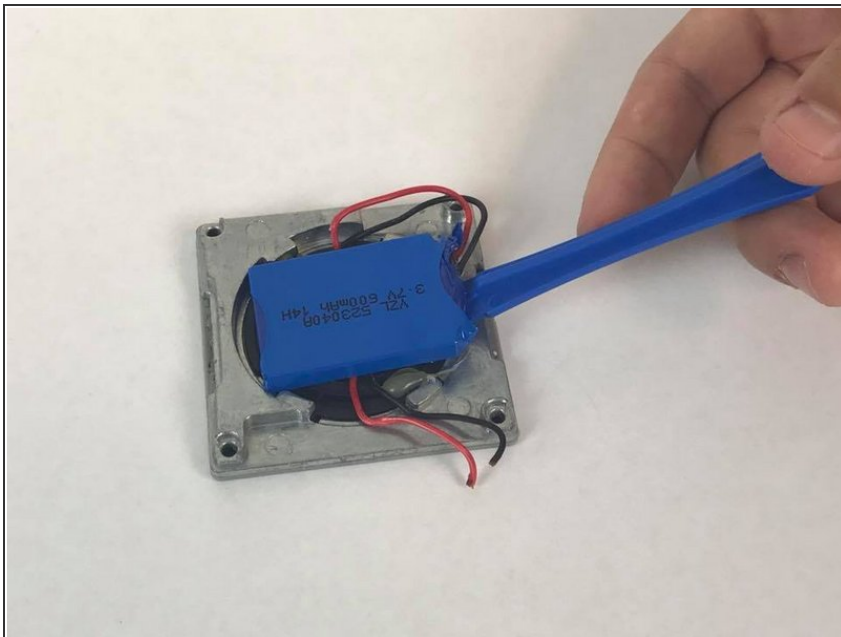
- Use the J1 bit attached to the screwdriver to remove the four 10mm screws from the bottom of the speaker.

## Step 3



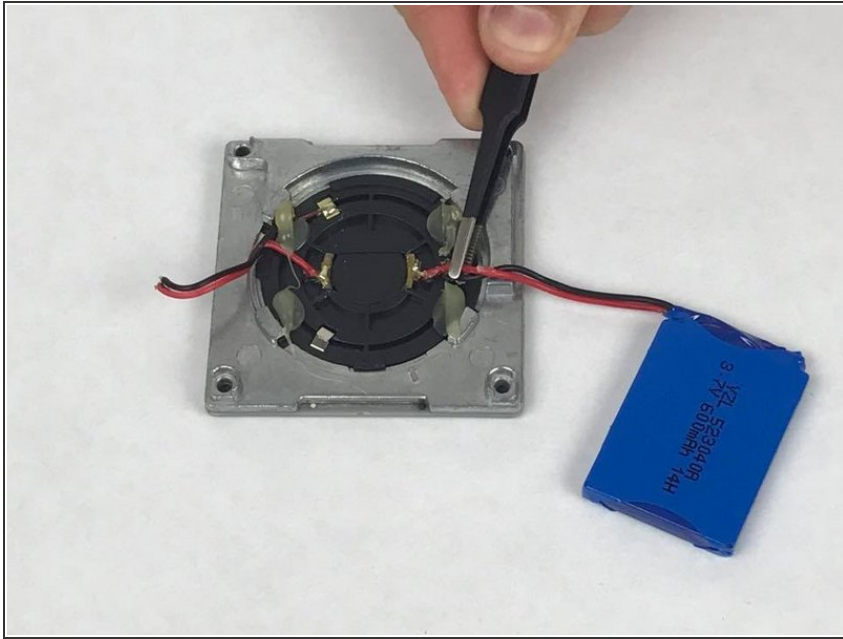
- Lift the bottom cover away from the rest of the speaker.
- ⚠ There are wires connecting the battery and cover to the rest of the speaker. Be careful when removing the base cover.
- Using the tweezers, pull the wires from the speaker's internal chip.
- ⚠ Be careful not to damage the chip when you remove the wires.
- ⓘ It will likely require soldering to reassemble the speaker after this step.

## Step 4



- Using a plastic opening tool, gently pry the battery from the metal base.

## Step 5



- Using tweezers, pull the wires from the metal base connection.

To reassemble your device, follow these instructions in reverse order.