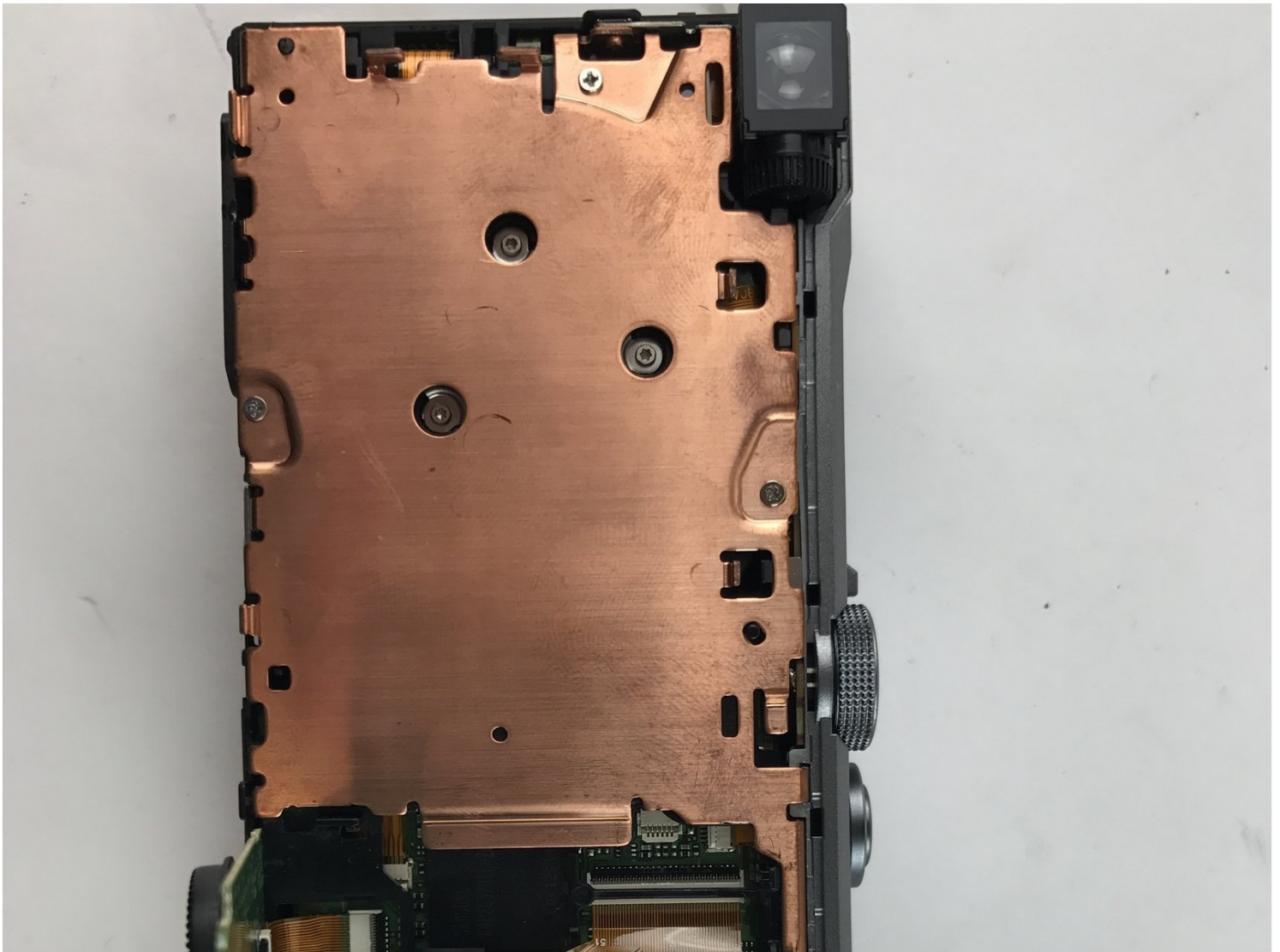




Panasonic Lumix DMC-ZS40 Motherboard Replacement

If your Panasonic Lumix DMC-ZS40 wont turn on...

Written By: Kevin Tran



INTRODUCTION

If your Panasonic Lumix DMC-ZS40 won't turn on and your battery is fully charged then replacing the motherboard is what you'll need to do in order to get your camera back up and running.

🔧 TOOLS:

Spudger (1)

Phillips #000 Screwdriver (1)

Tweezers (1)

Step 1 — Battery



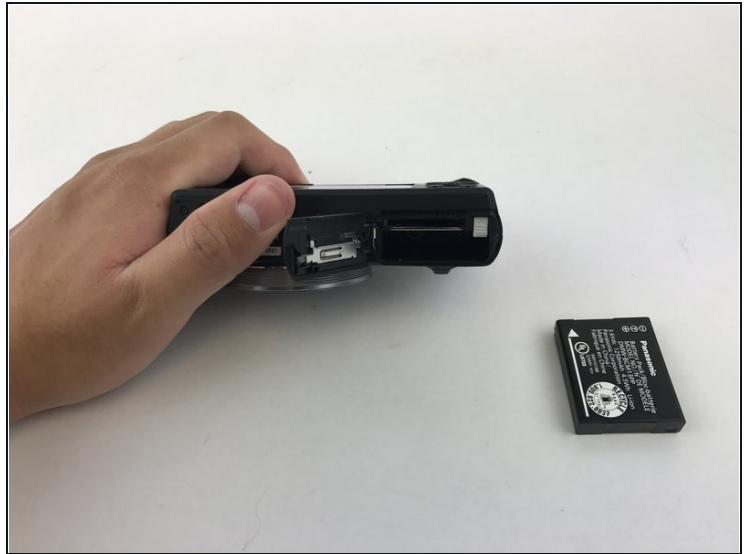
- Find the battery/memory card door on the bottom right of the camera.
- Use your finger or screw driver to slide the grey latch from the locked position to the open position. This will swing open the door.

Step 2



- Push up on the right-hand-side tab to release the battery.

Step 3



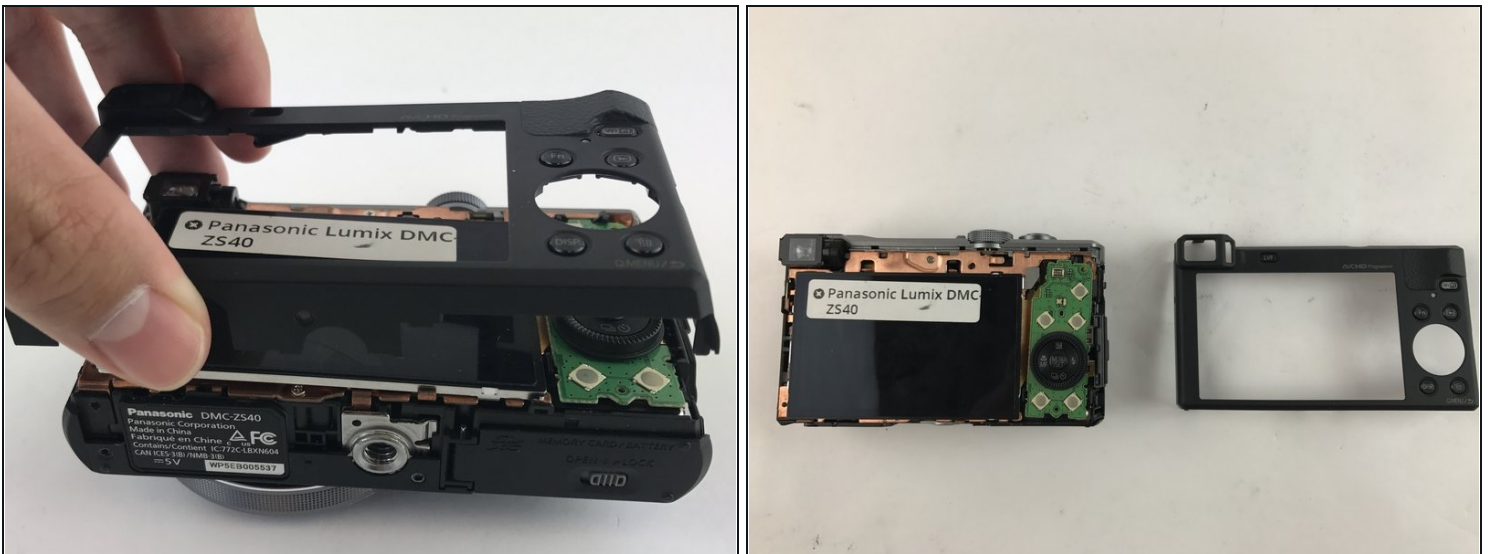
- Remove battery from camera.

Step 4 — LCD Screen



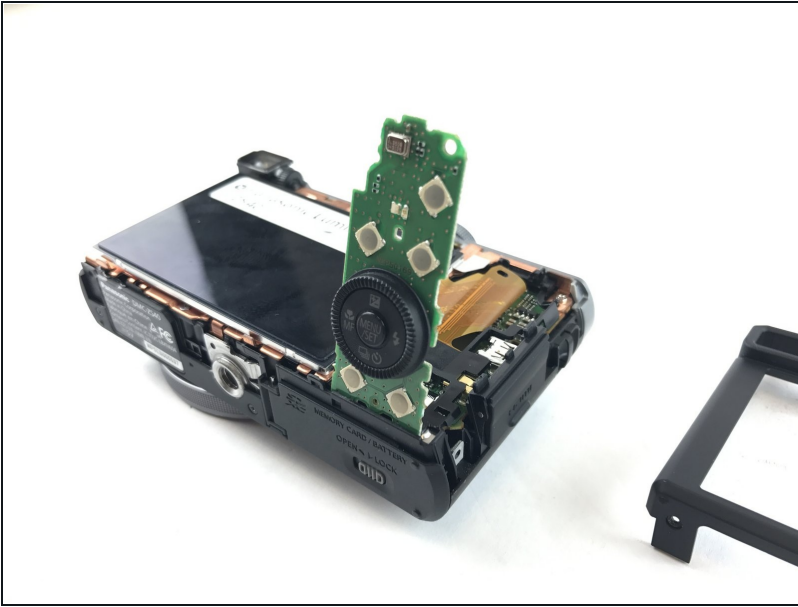
- Unscrew the five 3mm screws located around the sides of the camera using a PH000 bit or Phillips 000 Screwdriver.

Step 5



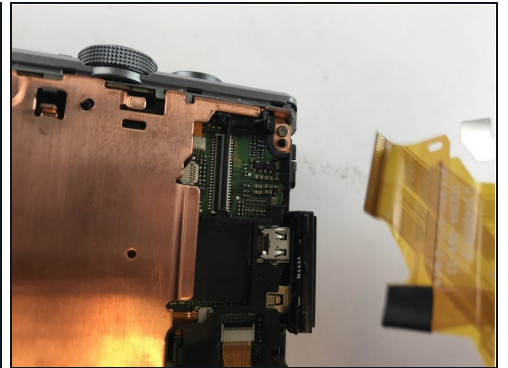
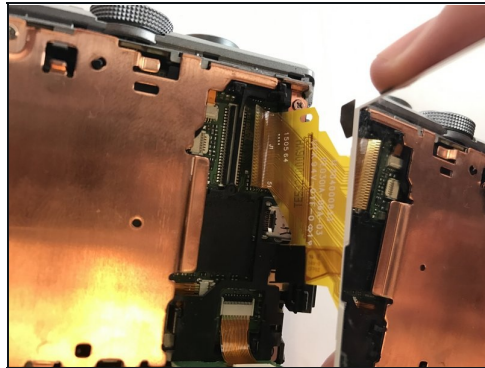
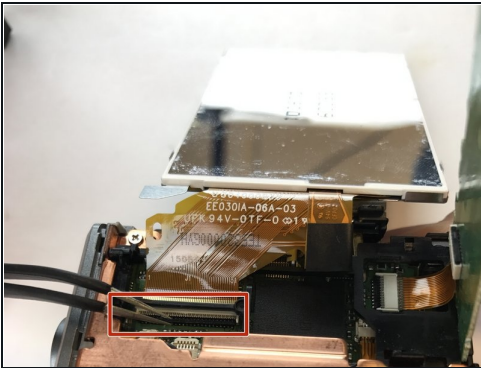
- Pry off the back casing of the camera and place the camera face down.

Step 6



- Flip the right hand side control dial circuit board up.

Step 7

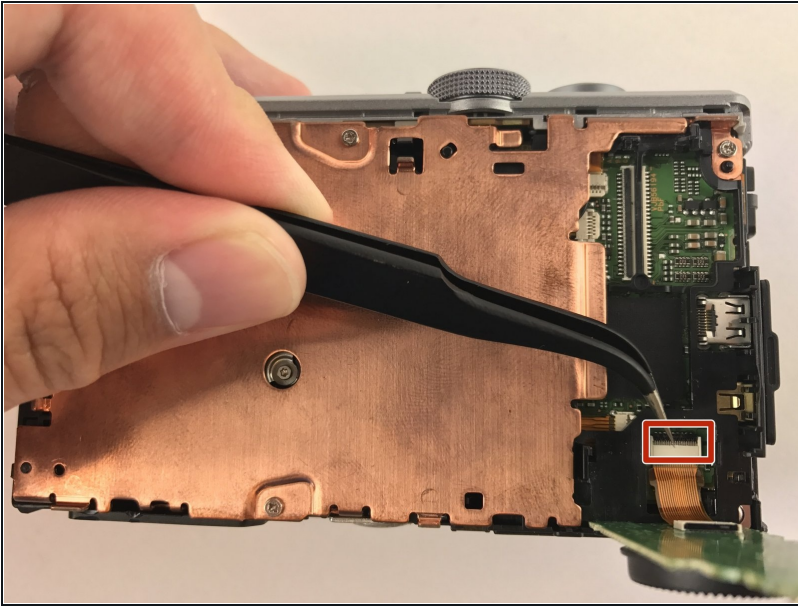


- Turn the LCD screen over to the side exposing the connection to the motherboard.
- Remove the display data cable connecting the LCD screen to the motherboard. Using [tweezers](#), pry up the black retaining flap then gently pull the display data cable free.

⚠ Be careful when handling any display data cables in the camera as they are prone to tearing.

- ☑ To close for reassembly, slide the display data cable back into the ZIF connector and close the retaining flap.

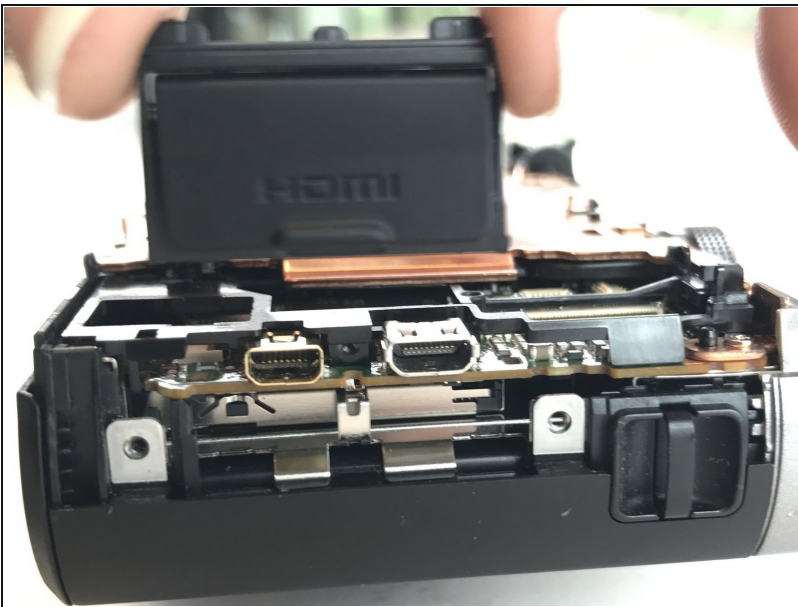
Step 8 — Motherboard



- Disconnect the control dial from the motherboard. Locate the ZIF connector for the control dial. Use [tweezers](#) or screwdrivers to lift up on the retaining flap to remove the ribbon cable.

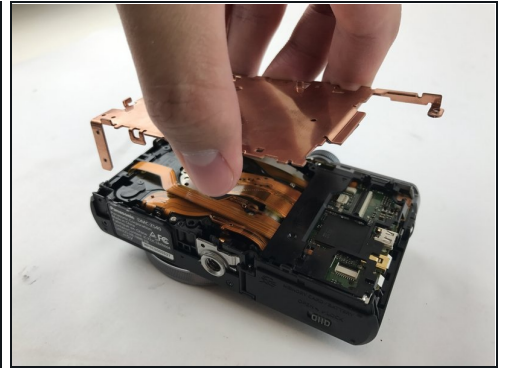
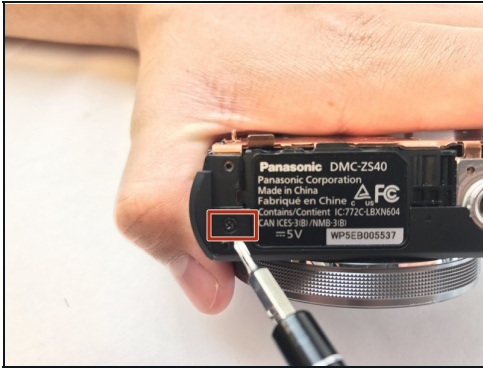
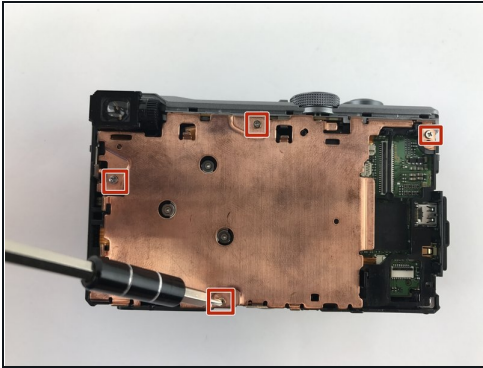
⚠ The connector ribbons are prone to tearing so use care during removal.

Step 9



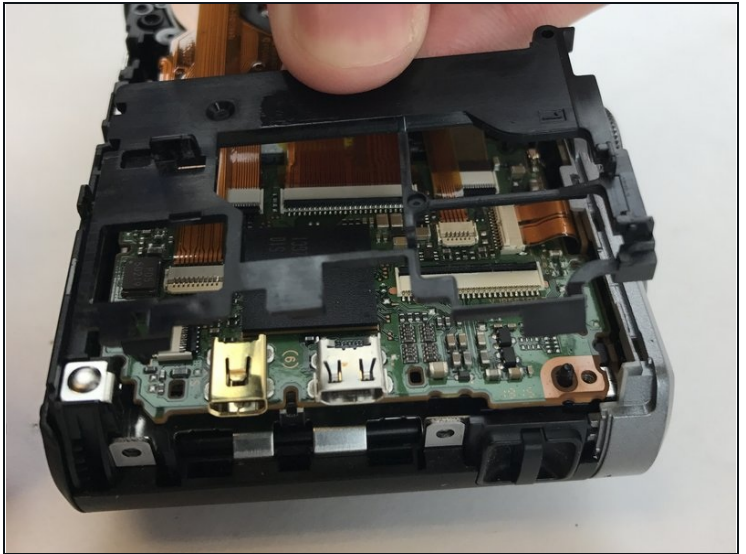
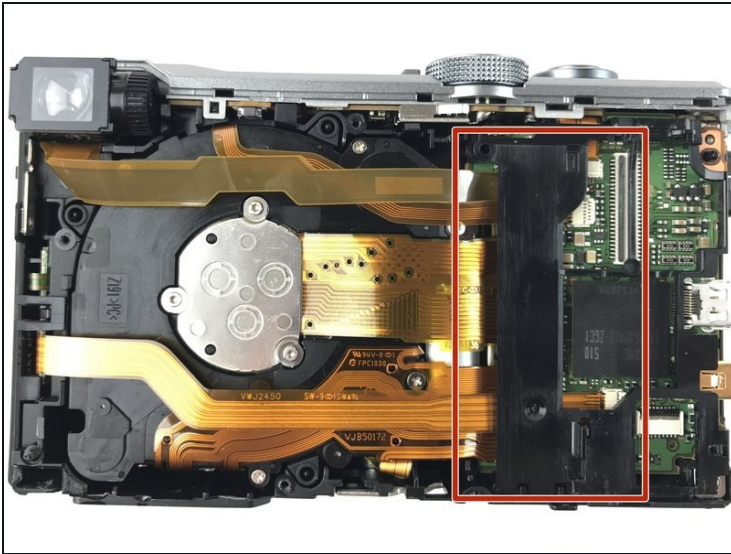
- Pry the HDMI cover off the side of the camera.
- ① No tools are required for this step.

Step 10



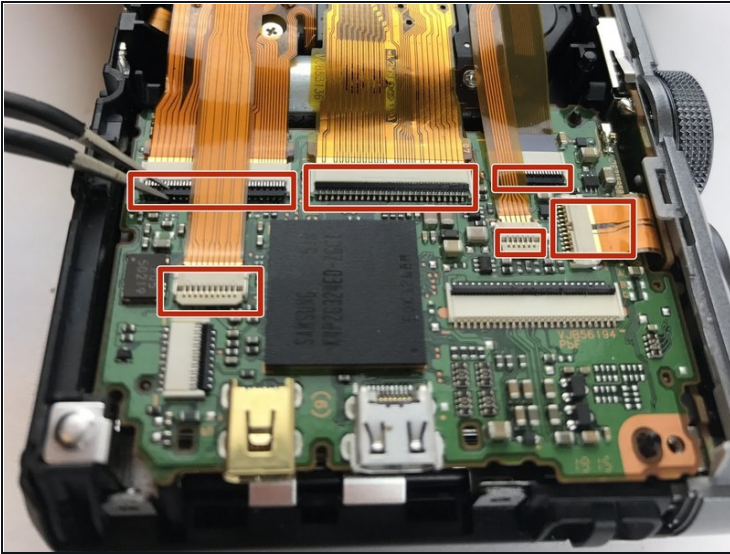
- Remove these four 4mm on the top of the plate cover and the 3mm screw on the side of the camera using a PH000 bit head. Once the screws are removed, the plate cover should lift right up.
- ☑ Keep track of the different screw lengths and do not mix them up.

Step 11



- Pry the black cover shielding the ZIF connectors off with your hand.

Step 12



- Disconnect these 6 ribbon cables from the motherboard. Use tweezers or a screw driver to lift up on the retaining flaps for each ZIF connector.

To reassemble your device, follow these instructions in reverse order.