



Asus X401A Internal Fan Replacement

Written By: Skylar Alexander



TOOLS:

Phillips #00 Screwdriver (1)

Plastic Spudger (1)

Magnetic Project Mat (1)

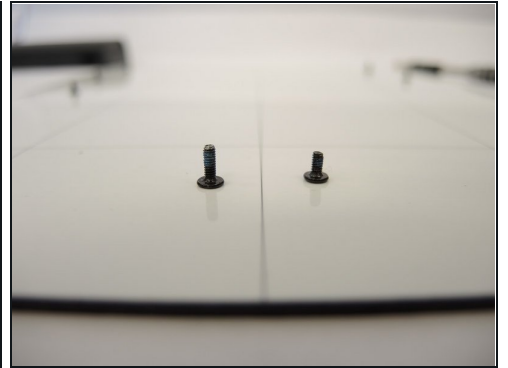
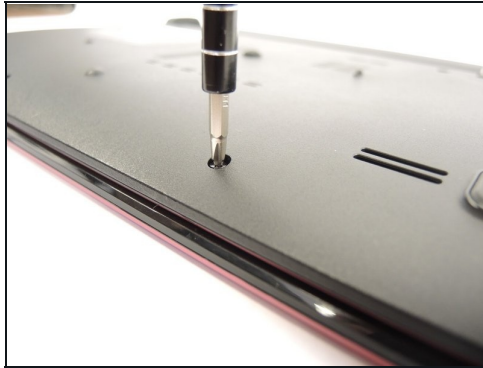
Metal Spudger (1)

Step 1 — Internal Fan



- Flip over the laptop and remove the battery for ease of replacement.

Step 2



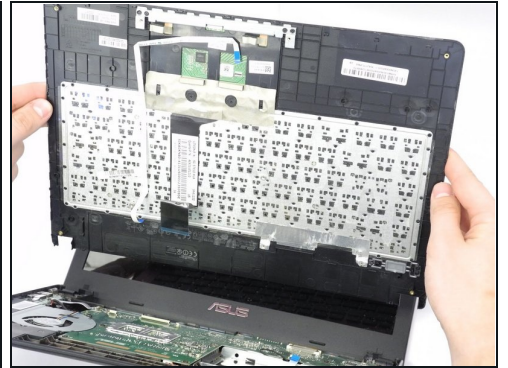
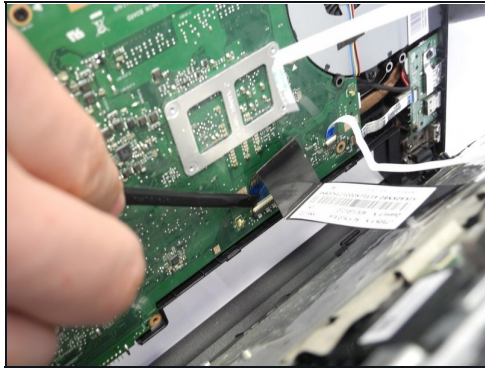
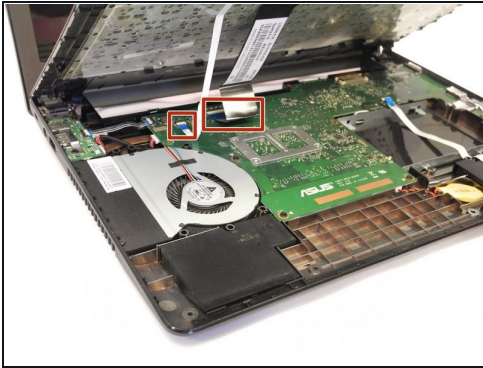
- Remove the screws located underneath the laptop by using a Phillips #00 screwdriver. This will assist you when disconnecting the keyboard cover from the rest of the laptop.
- Remove the two 4mm screws.
- ① Place the screws on a [magnetic mat](#) to not lose them.

Step 3



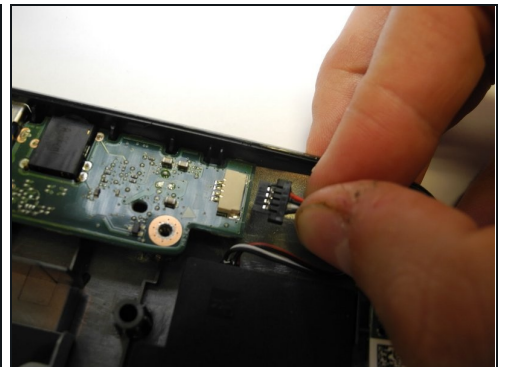
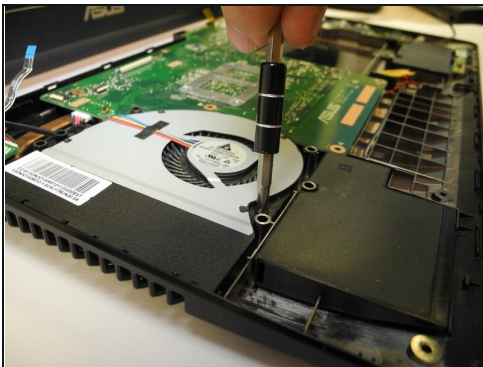
- Flip the laptop back over and begin prying the keyboard cover from the rest of the laptop by using a plastic spudger.
- ⚠ The keyboard is still attached to the motherboard via two ribbon cables. Do not pull the keyboard away from the laptop.

Step 4



- Use a spudger to lift the ZIF tabs.
- Remove both the black and white ribbon cables in order to completely detach the cover from the rest of the device.

Step 5

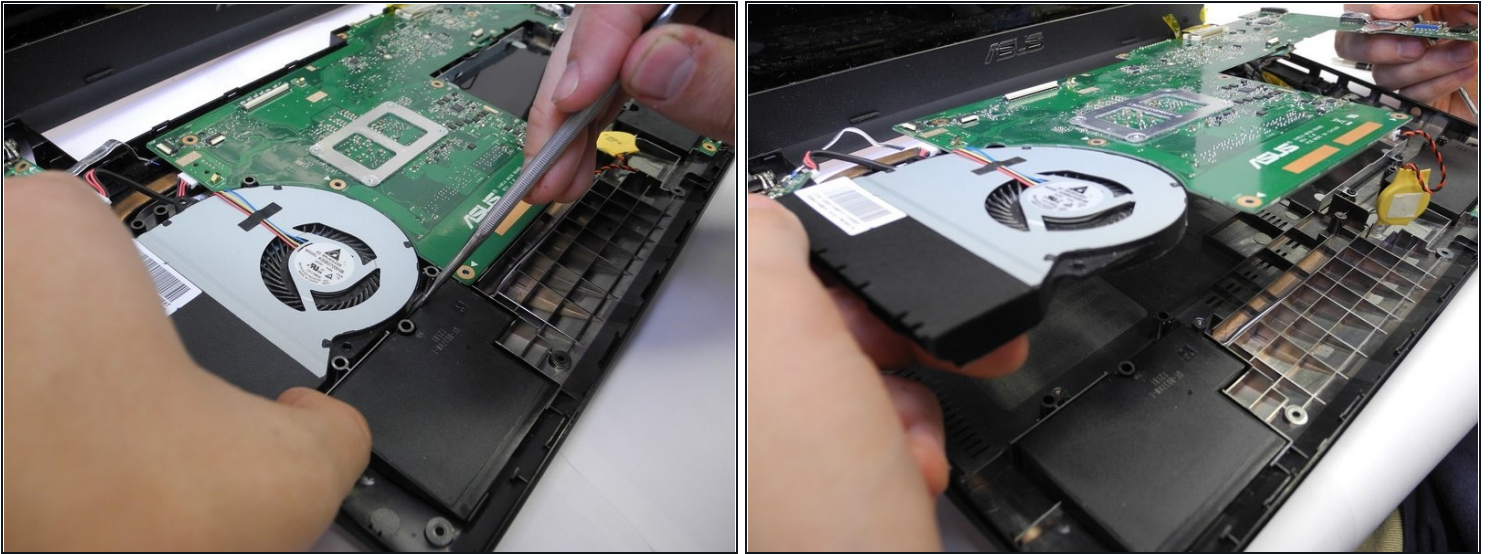


- Remove all screws that connect the motherboard to the bottom of the laptop.

ⓘ The motherboard holds the internal fan in place

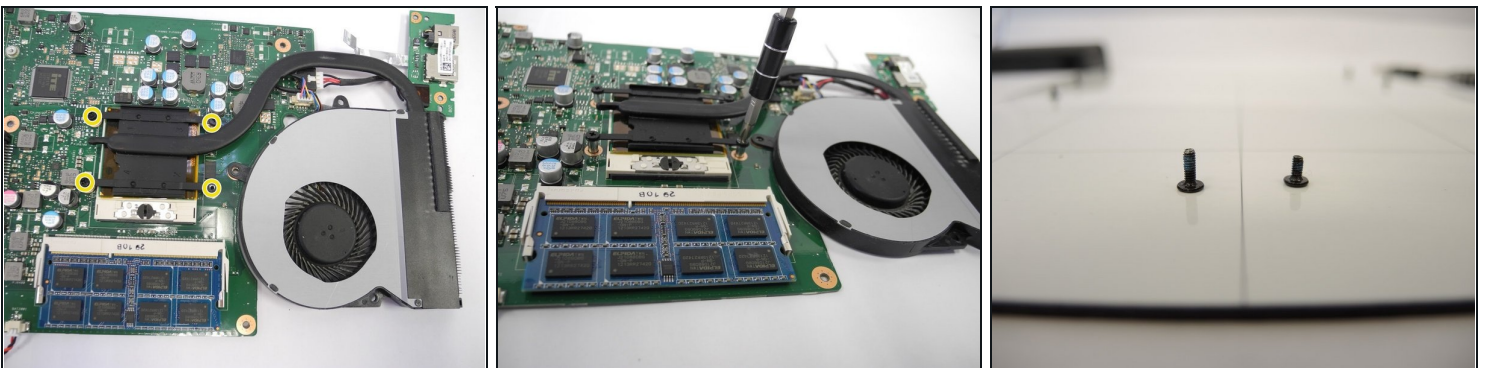
⚠ Before attempting to remove the motherboard, be sure to disconnect both sets of wires as pictured.

Step 6



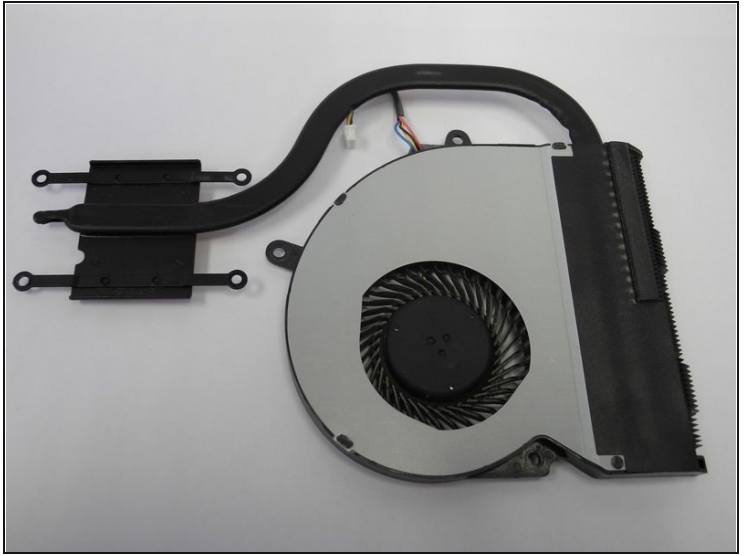
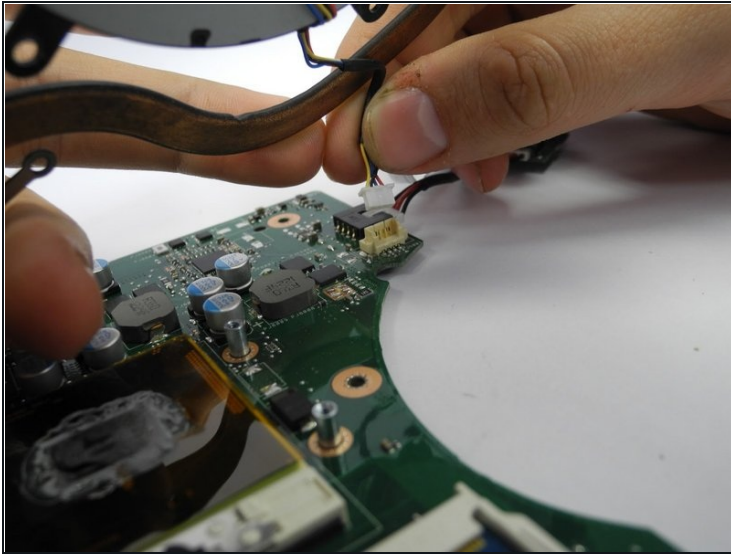
- Once all screws are removed and both sets of wires are detached, use a spudger to carefully pry up the motherboard along with the attached internal fan.
- Set the rest of the laptop aside and direct your attention to only the motherboard.

Step 7



- Flip the motherboard over and you will notice four screws (circled in yellow) that are connecting the fan's bracket to the motherboard. Using your screwdriver, remove the four screws and place them off to the side.

Step 8



- One final group of wiring will also be connecting the internal fan to the motherboard. Careful disconnect it as shown.
- With the internal fan completely disconnected from the motherboard, you should be able to freely remove it.
- Replace the faulty internal fan with a new one and repeat the previous steps for reassembly.

To reassemble your device, follow these instructions in reverse order.