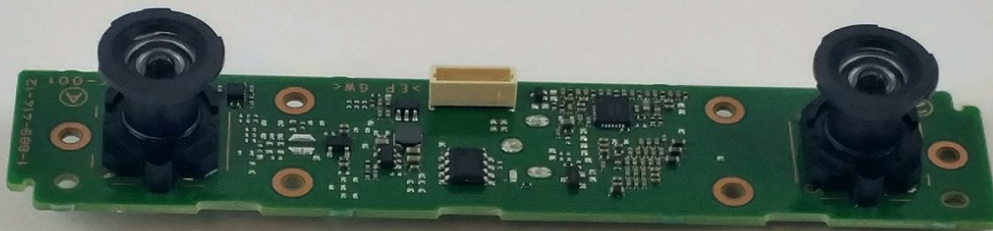




Sony PlayStation Camera Motherboard Replacement

This guide shows the steps to replace the motherboard on the Sony PlayStation Camera.

Written By: Joshua Gates



INTRODUCTION

This guide will aid you in performing the replacement of the Sony PlayStation's Camera motherboard/camera assembly. The cameras are epoxied to the motherboard, so if either of the cameras require replacement, the entire assembly will need to be replaced.

The outer case will scratch easily if the device is not handled with care during the opening process. If the aesthetics don't matter to you, this will not be a problem.

Finding the seam to start the case separation can be difficult. Using a flashlight, or very well lit area, can help to find the seam under the right angle. This can be helpful during this step.



TOOLS:

- [Tweezers](#) (1)
 - [Metal Spudger](#) (1)
 - [iFixit Opening Tools](#) (1)
 - [IFIXIT screwdriver with a PH0 bit](#) (1)
 - [Phillips PH000 Screwdriver](#) (1)
-

Step 1 — Motherboard/Camera(s)



- Separate the camera from the camera stand to gain access to the bottom of the camera.

Step 2



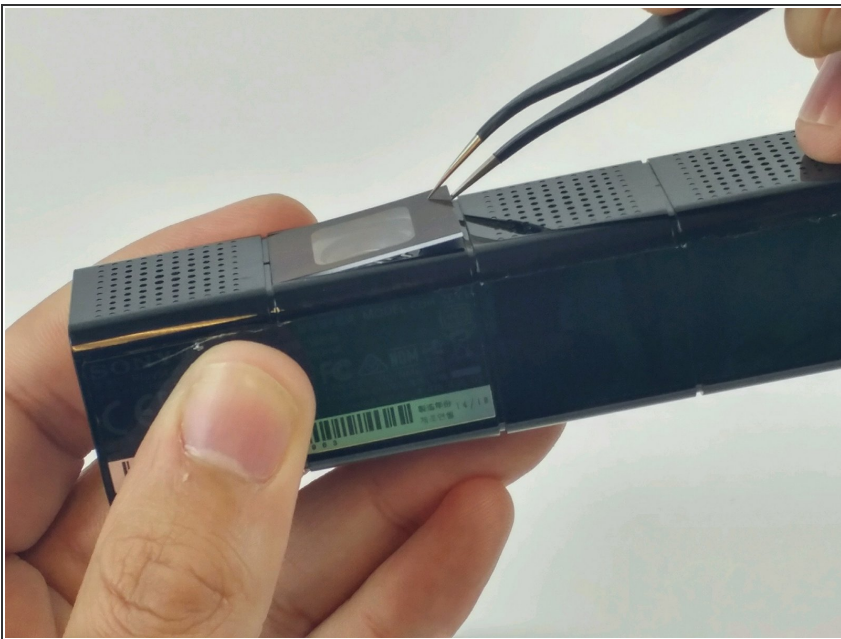
- Using a PH000 sized screwdriver, remove the two 6.5mm Phillips #000 screws located under the stand connection point, where the cable enters the case.

Step 3



- Using tweezers, remove the cap holding the cable grommet in place.

Step 4



- Using the tweezers, remove both poly-carbonate lens coverplates.
- ⚠ Lift the coverplates slowly, to ensure they do not crack, or break.


Step 5



- Using the PH0 sized screwdriver, remove two 3.2mm Phillips #0 screws, located under the coverplates.

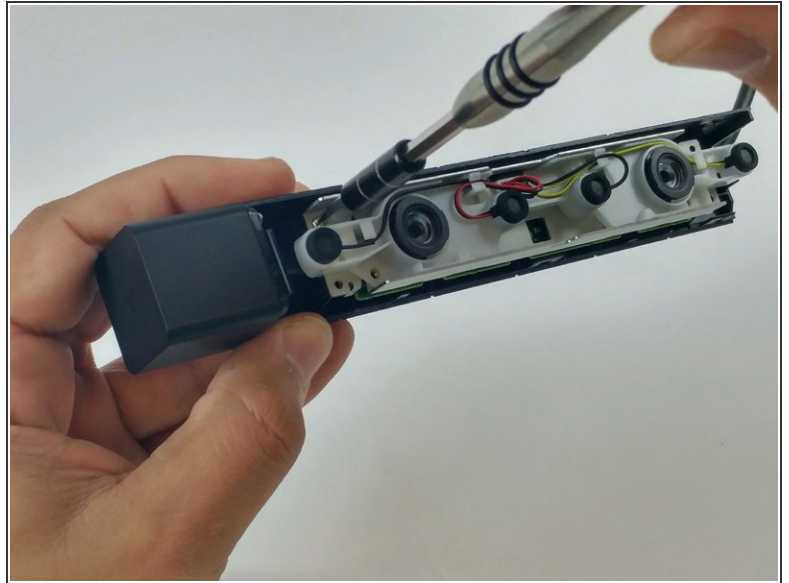
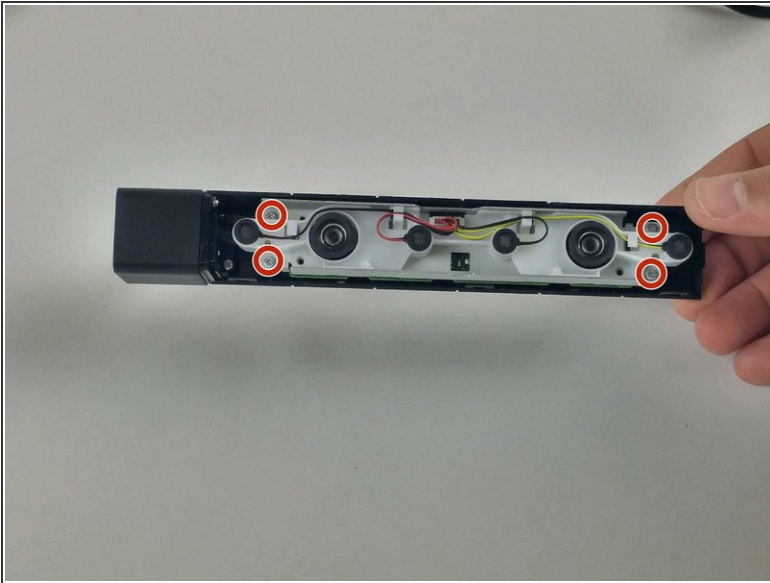
Step 6



 Using extreme care, separate the front of the case, from the back with a metal spudger, or pry tool. The case will scratch easily.

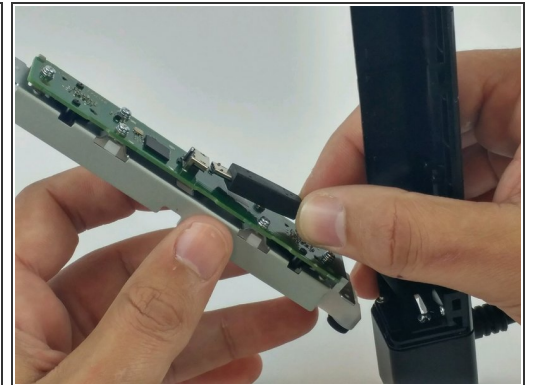
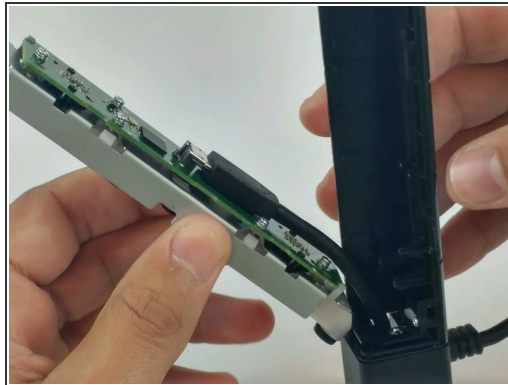
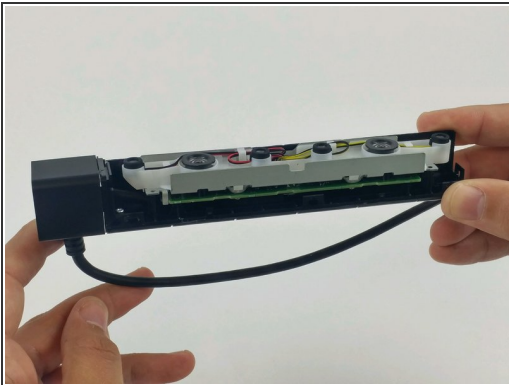
- The case joints can be hard to spot. They appear as a very fine line in the plastic. Start with light pressure until the seam parts, allowing the pry tool to work.

Step 7



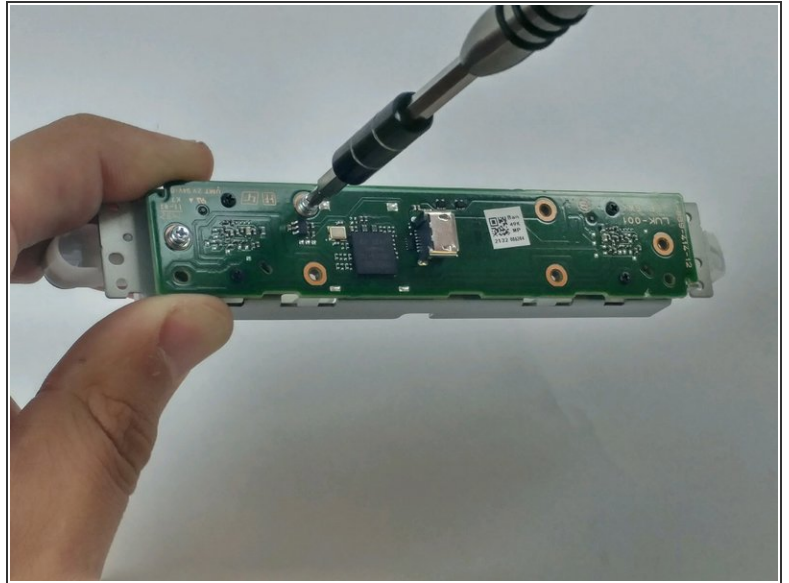
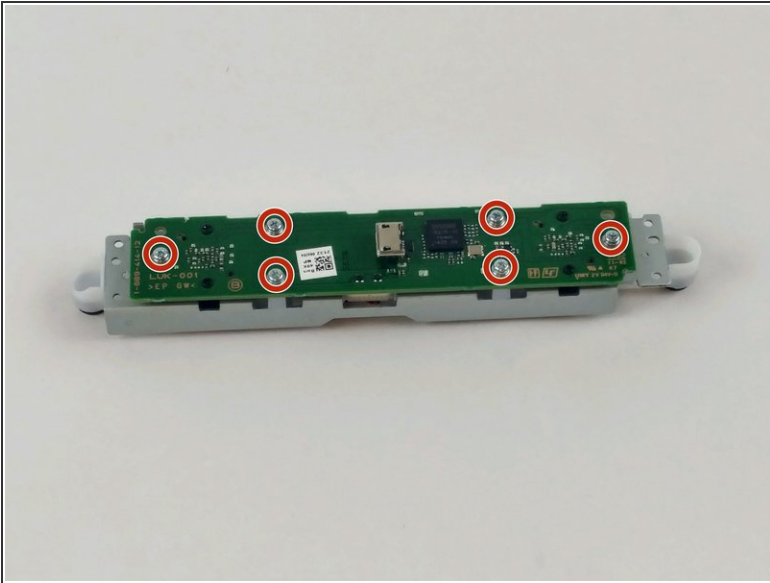
- Using the PH0 sized screwdriver, remove the four 4.5mm Phillips #0 screws securing the circuit assembly to the device housing.

Step 8



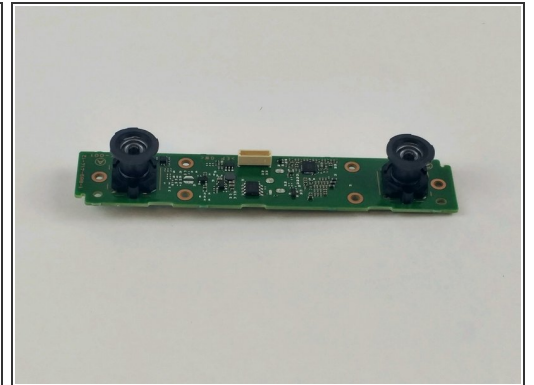
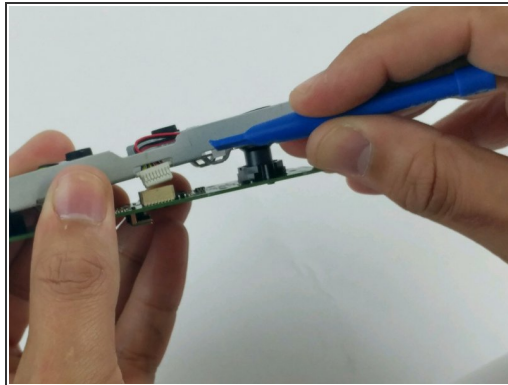
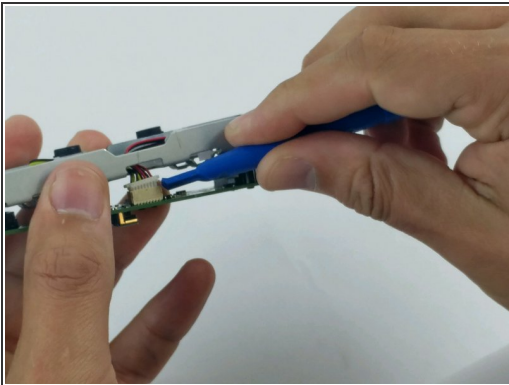
- Lift the motherboard and frame from the plastic housing.
- Disconnect the camera cable from the motherboard.

Step 9



- Using the PH0 sized screwdriver, remove the six 4.2mm Phillips #0 screws securing the motherboard to the metal frame.

Step 10



- Using a plastic opening tool, disconnect the microphone array connector from the motherboard.

To reassemble your device, follow these instructions in reverse order.