



PlayStation Move Battery Replacement

This guide will show you how to replace the battery component of the PlayStation VR move controller.

Written By: Sarah Shand



INTRODUCTION

The battery is an integral part of the PlayStation Move controller. This guide will help you to remove and replace it with ease.

TOOLS:

- [Phillips #00 Screwdriver](#) (1)
 - [iFixit Opening Tools](#) (1)
 - [Tweezers](#) (1)
-

Step 1 — Case



- Turn the controller over and unscrew the four 10mm screws with a PH #00 screwdriver.

Step 2



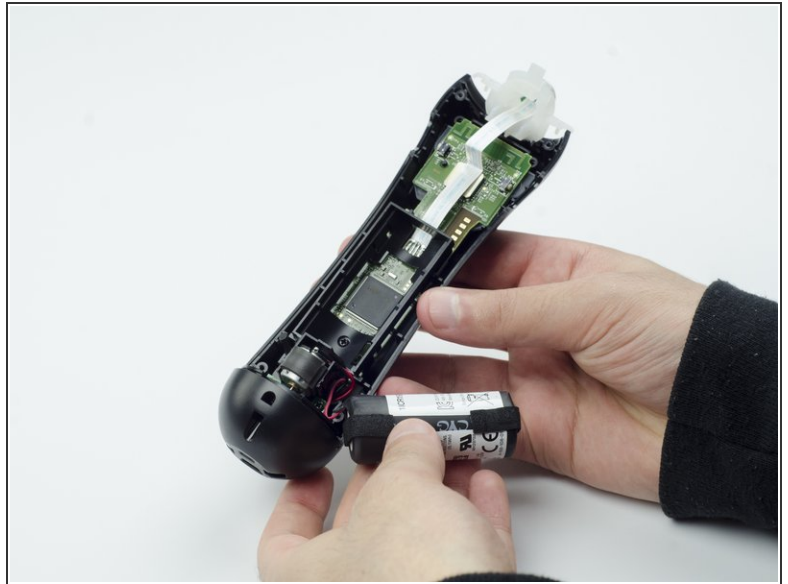
- Pinch the sides of the back panel to remove it and set it aside.

Step 3



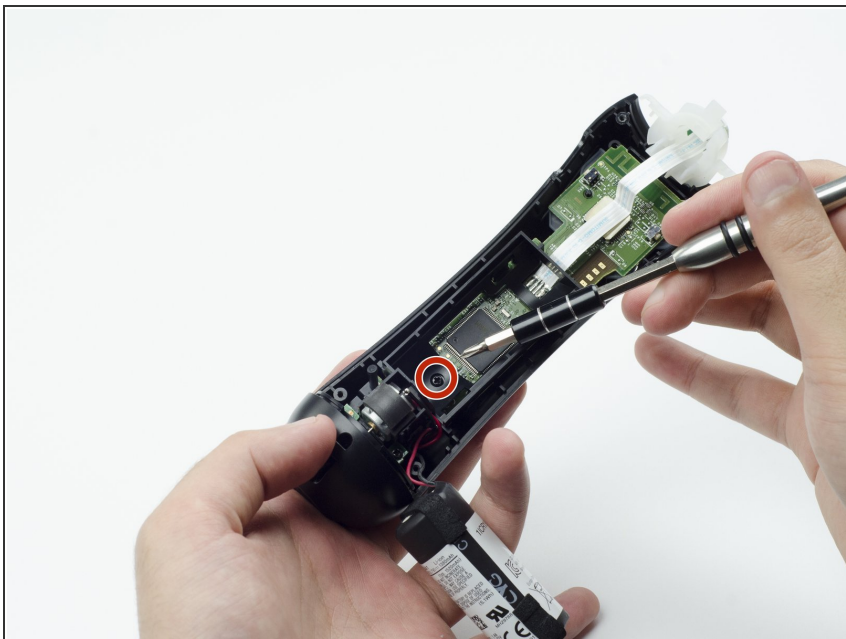
- Hold the base of the controller with one hand and with the other carefully pull up on the white spherical piece to remove it.

Step 4



- Push the Lithium Ion battery from its slot to remove it.
- ⓘ Be mindful not to damage the wires or wired components, as the battery will still be attached via its connector.

Step 5



- Unscrew the 9mm screw in the battery slot with a PH #00 screwdriver.

Step 6



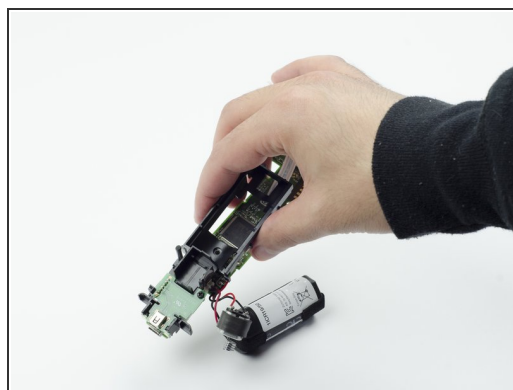
- Using a plastic opening tool, carefully pry the rumble motor free.

Step 7



- Unscrew the 9mm screw behind the rumble motor slot with a PH #00 screwdriver.

Step 8



- Carefully pinch the plastic sides of the battery slot and lift it (along with the circuit board) from the plastic shell of the move controller.

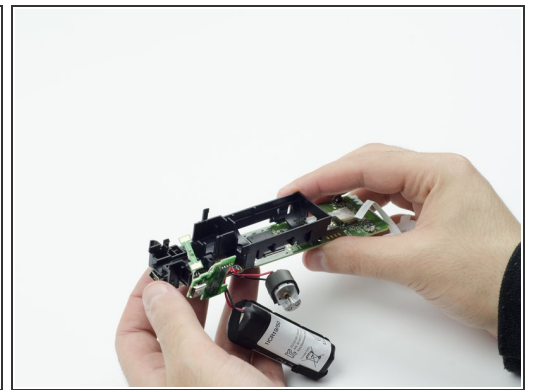
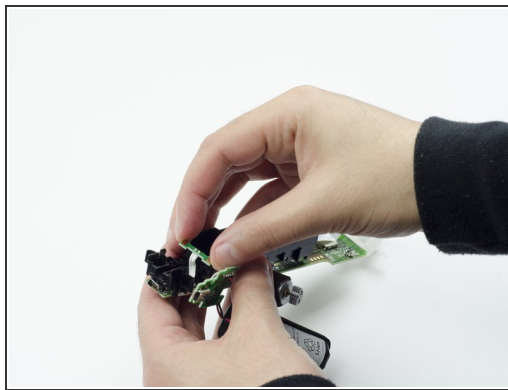
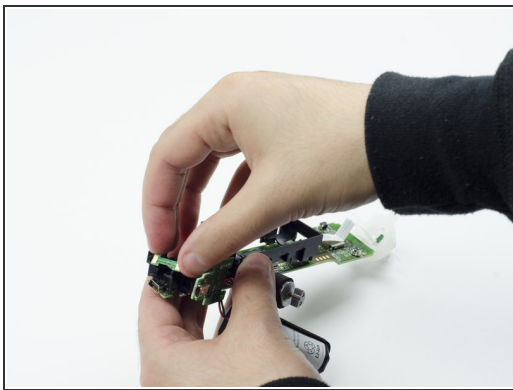
Step 9



- Using your fingers, carefully pry the square green piece beneath the battery slot free.

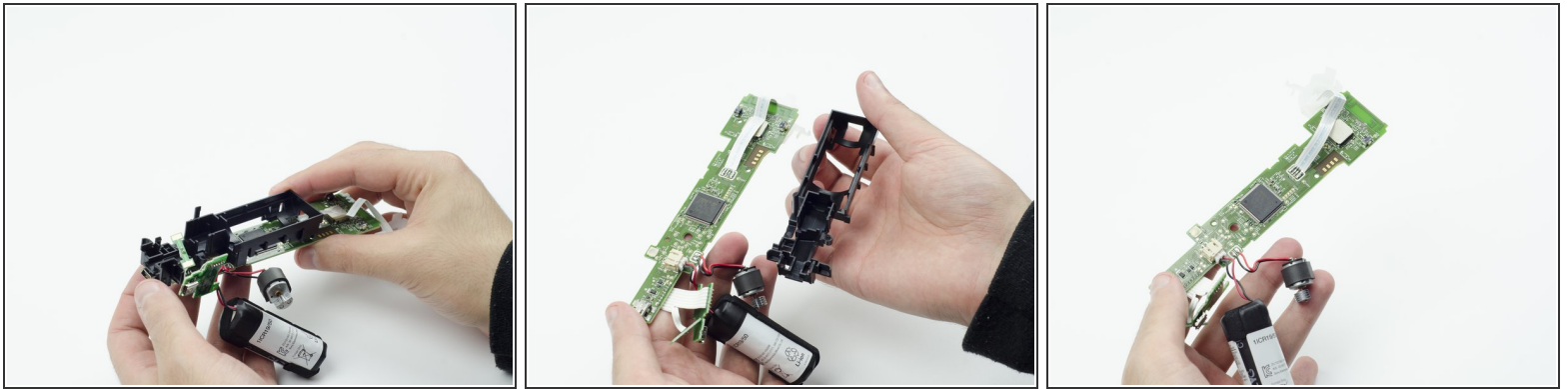
i It is attached via white ribbons which need to be kept intact.

Step 10



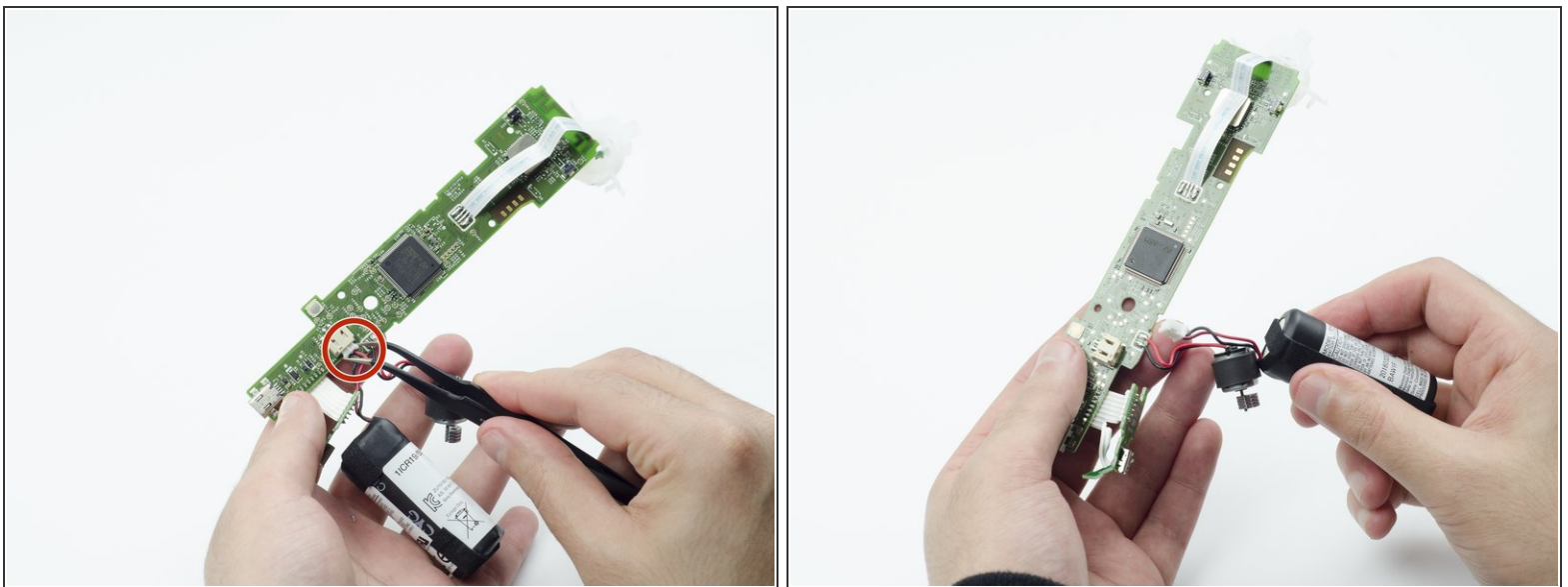
- Follow the white ribbon attached to the part you just removed to a smaller, more rectangular piece.
- Lift the rectangular piece from its slot to free it.

Step 11



- Carefully lift the entire circuit board from the black plastic encasing it.
- ⓘ Take extra care not to damage any of the wired components.

Step 12 — Battery



- Using tweezers, carefully pull the power cable from its port on the circuit board.

To reassemble your device, follow these instructions in reverse order.