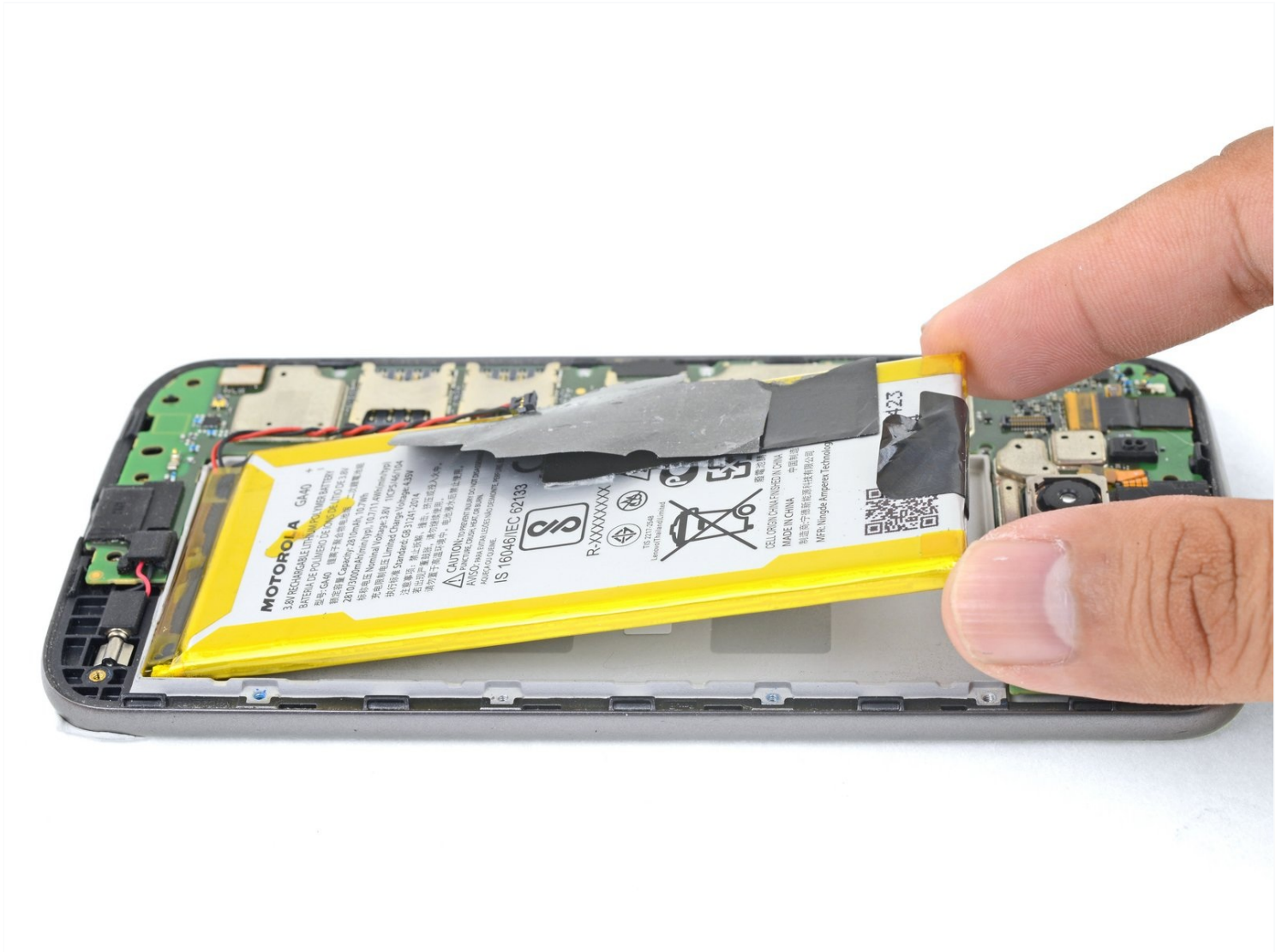




Motorola Moto G4 Plus Battery Replacement

Follow this guide to replace the Moto G4 plus's...

Written By: Arthur Shi



INTRODUCTION

Follow this guide to replace the Moto G4 plus's rechargeable battery. If your battery is swollen, [take appropriate precautions](#).

Before you begin, download the [Rescue and Smart Assistant](#) app to backup your device and diagnose whether your problem is software or hardware related.

For your safety, discharge your existing battery below 25% before disassembling your phone. This reduces the risk of a dangerous thermal event if the battery is accidentally damaged during the repair.



TOOLS:

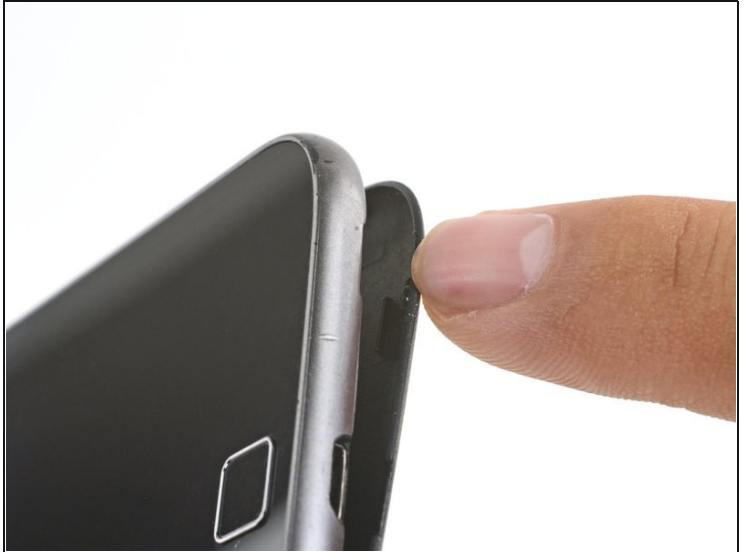
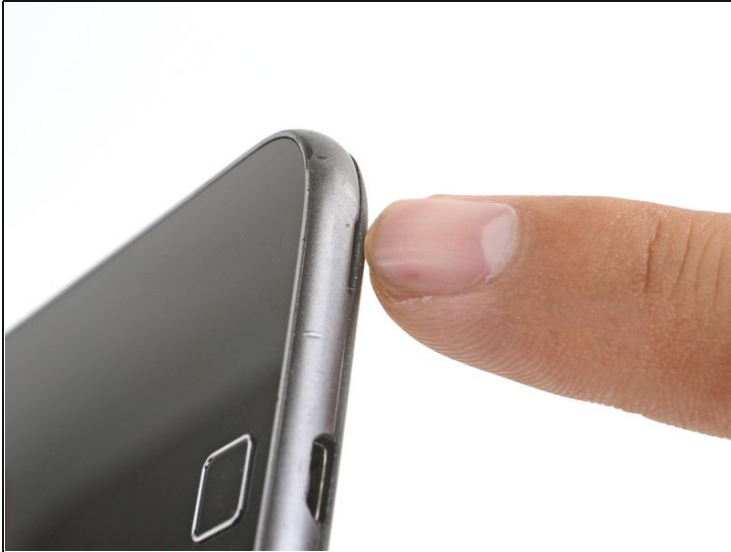
[Spudger](#) (1)
[Tweezers](#) (1)
[T3 Torx Screwdriver](#) (1)



PARTS:

[Moto G4/G4 Plus Battery - Genuine](#) (1)

Step 1 — SIM Card



- Insert a fingernail or a spudger into the notch on bottom edge of the phone near the charging port.
- Pry the back cover away from the body of the phone.

Step 2



- Continue to gently lift the back cover until all plastic clips have been released.
 - Remove the back cover.
- ☒ To reinstall the back cover, align the cover over the body and gently press all around the edges until you feel the clips snap into place.

Step 3



- Slide out and remove the SIM card.

Step 4 — Battery



- Remove the nineteen 3.1 mm T3 screws securing the midframe.

Step 5



- Use the point of a spudger to pry up the rubber cover over the camera flash connector.
- Remove the rubber cover.

Step 6



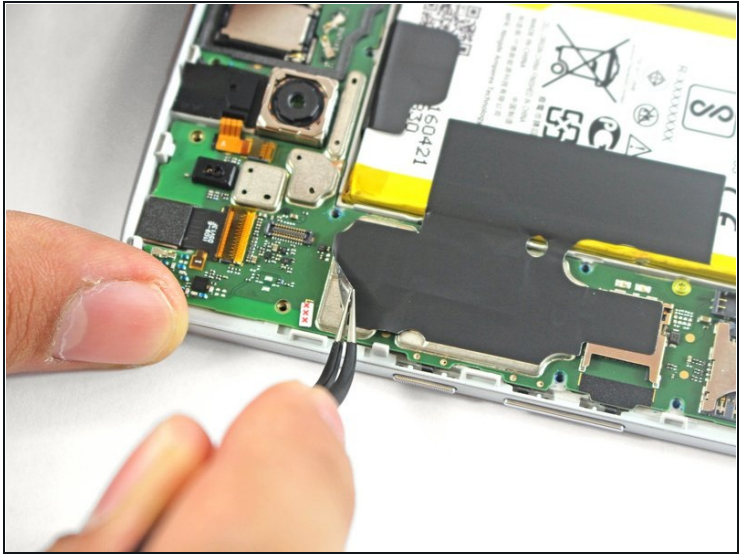
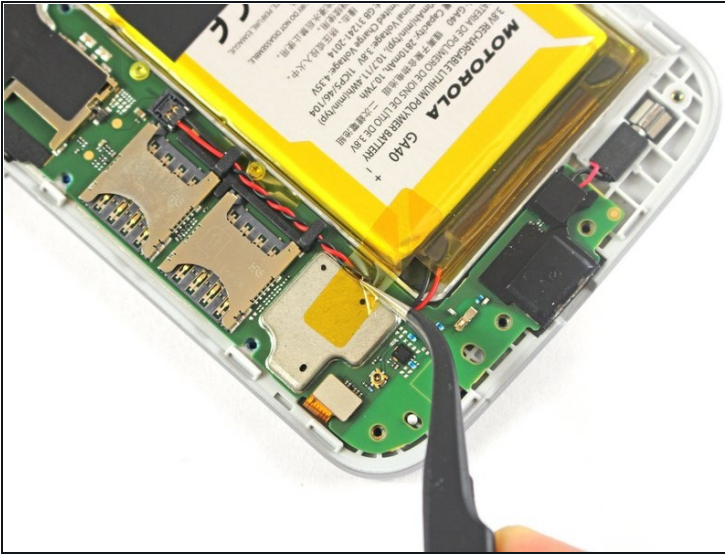
- Use the point of a spudger to pry up and disconnect the camera flash connector.

Step 7



- Loosen the midframe along the edges and lift it away from the body.
- Remove the midframe.

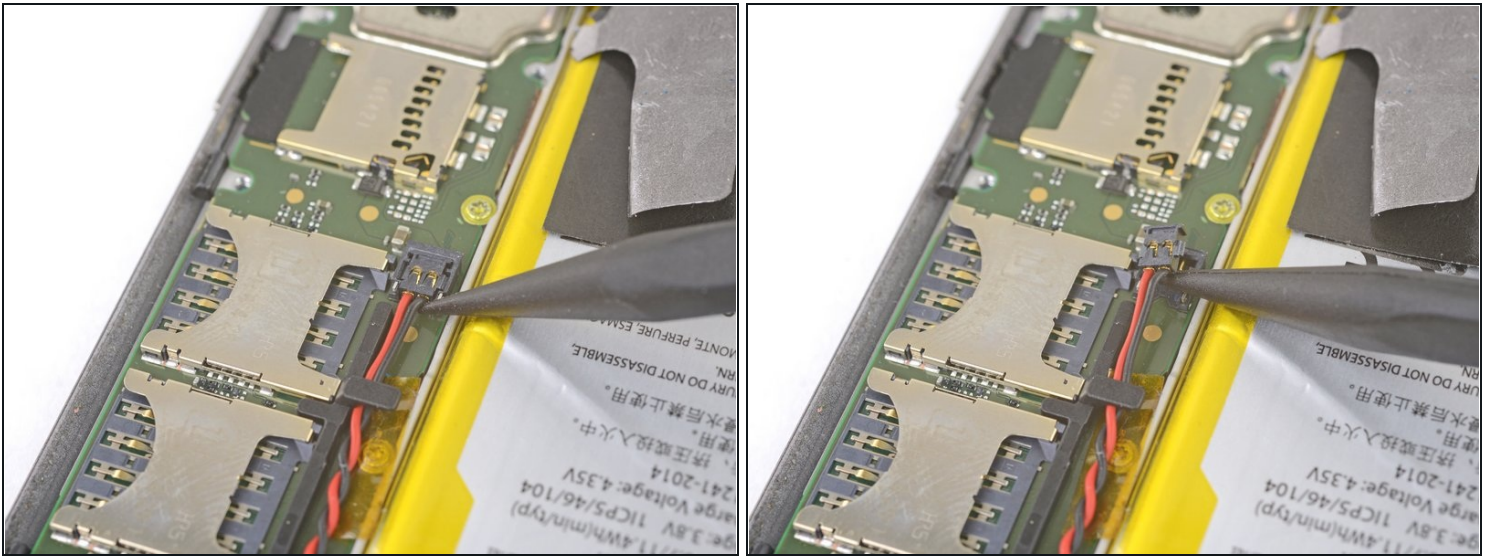
Step 8



⚠ Be very careful not to puncture the battery with any sharp tools. A damaged lithium-ion battery can catch fire and/or explode.

- Peel up and remove the tape securing the battery wires.
- Peel up and remove the black tape that bridges the battery and the phone.
- ☒ While neither tape pieces are necessary for the operation of the phone, save them if they are in good condition for the reinstallation process.

Step 9

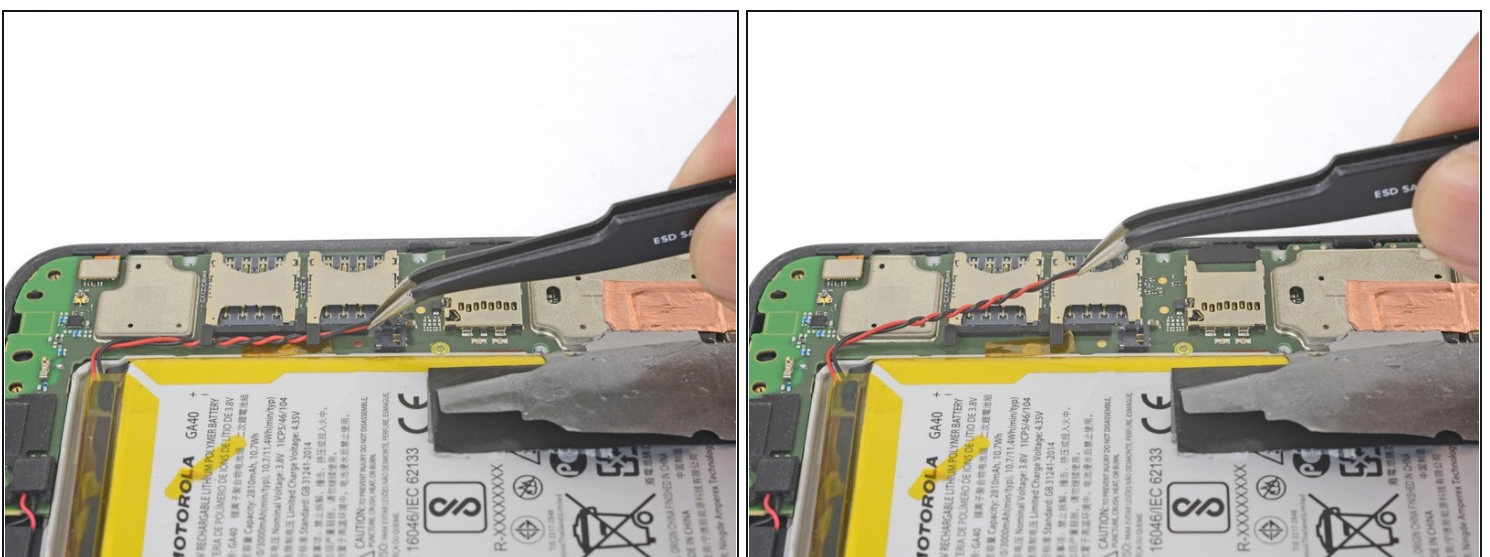


- Slip the point of a spudger underneath the red and black battery wires and gently **pry straight up**.

⚠ **Do not pull** the plug out, or you will tear the board socket out. Be careful where you pry. Do not pry against the board socket.

- ☑ During reassembly, align the connector in its socket, then press straight down to reconnect it.

Step 10



- Use [tweezers](#) or your fingers to de-route the battery wires from the plastic brackets.

Step 11

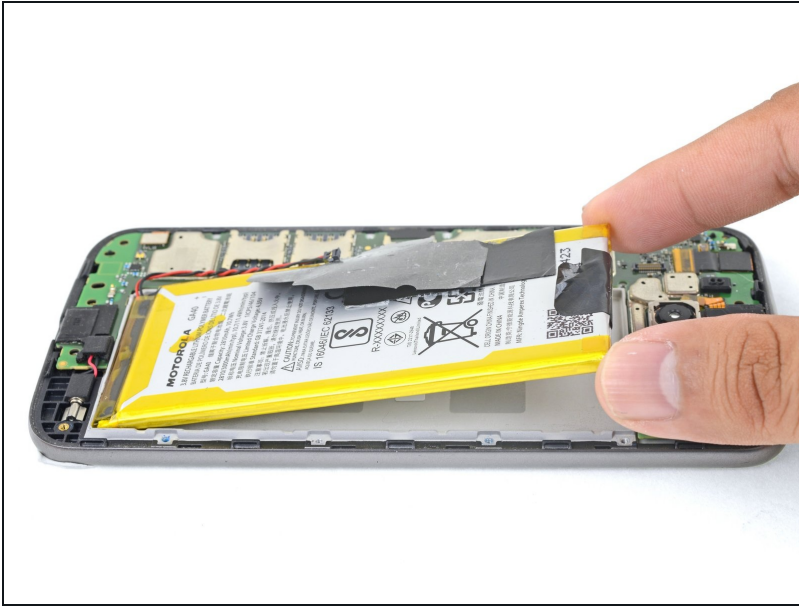


- Peel the black pull tab from battery and pull slowly but firmly to separate the battery from the frame.
 - ① A few drops of high concentration (90% or higher) isopropyl alcohol along each side may help soften the adhesive.
 - ① If the pull tab breaks, use a spudger to gently pry around the edges of the battery until it comes loose.

⚠ Don't deform or puncture the battery—it can catch fire and/or explode if damaged.

⚠ Never reinstall a damaged or deformed battery. Replace the battery.

Step 12



- Remove the battery.
- ☑ To install a battery, orient the new battery such that the wires exit near the bottom of the phone, and the battery connector is on the motherboard side.
- ☑ Clean off any adhesive residue which may prevent the battery from sitting flush against the frame. Use a few [strips of adhesive included in the battery kit](#) or some [double-sided tape](#) to secure the battery to the frame.

To reassemble your device, follow these instructions in reverse order.

After completing this guide, [calibrate your newly-installed battery](#).

Take your e-waste to an [R2 or e-Stewards certified recycler](#).

Repair didn't go as planned? Check out our [Motorola Moto G4 Plus Answers community](#) for troubleshooting help.