



SodaStream Source External Disassembly

Written By: Hailey Smith



TOOLS:

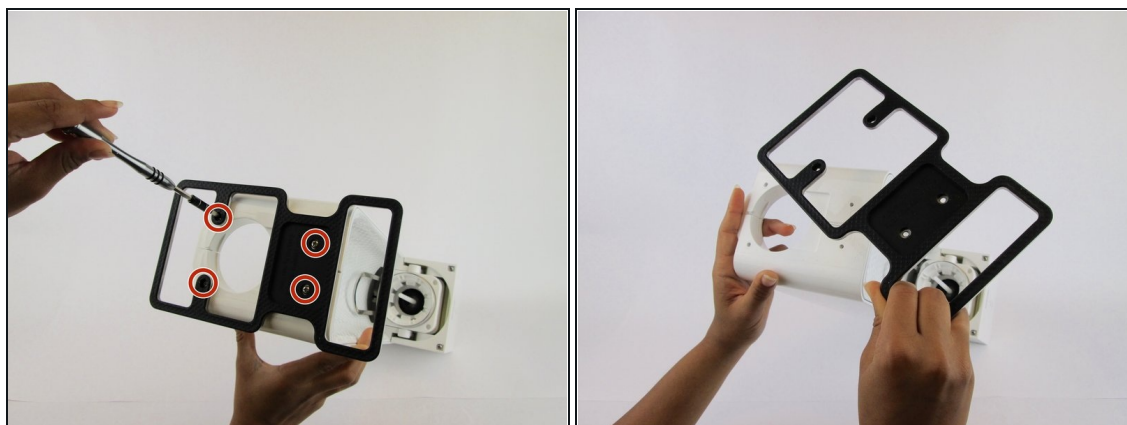
Phillips #1 Screwdriver (1)

Step 1 — SodaStream Source External Disassembly



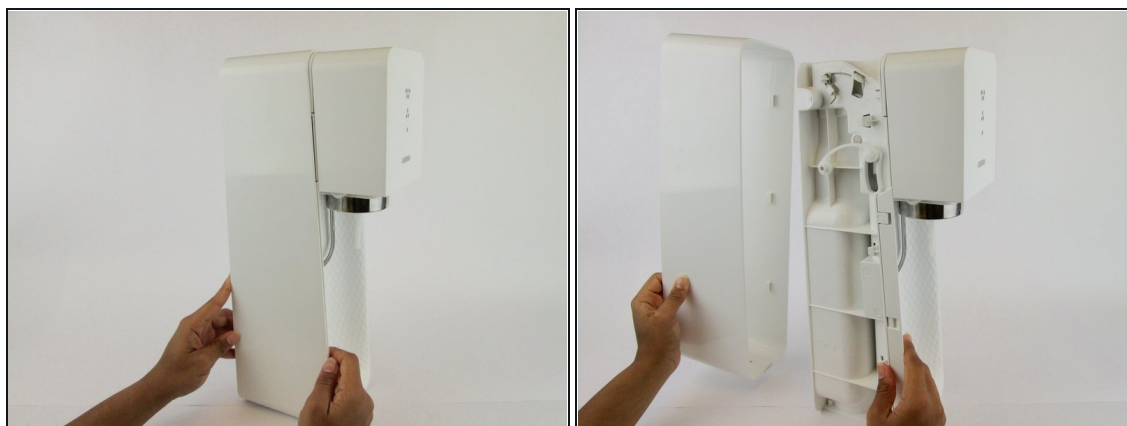
- Remove the soda bottle and the CO₂ canister from the machine.

Step 2



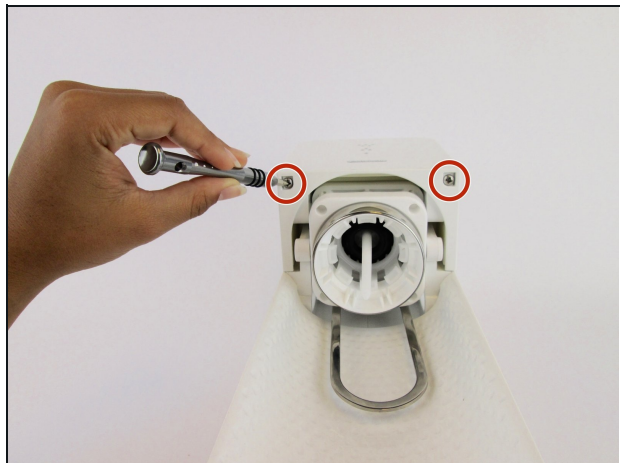
- Remove the four 17.8 mm screws from the bottom metal base using a [Phillips #1 screwdriver](#).

Step 3



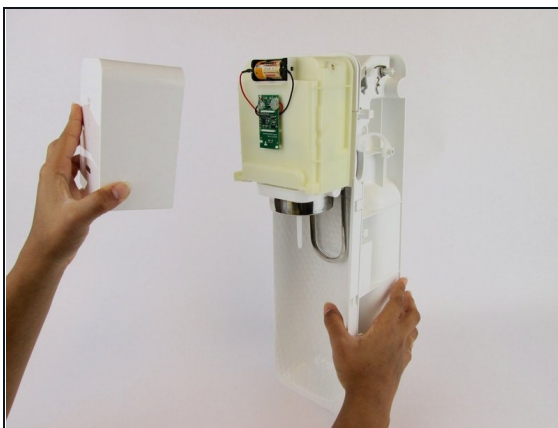
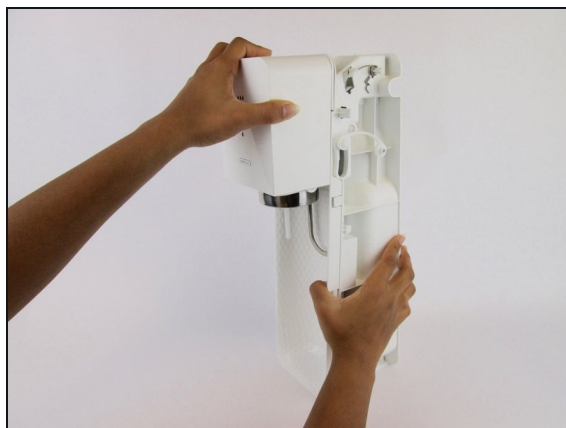
- Pull the outer cover away from the front of the device.

Step 4




- Remove the two 18.2 mm screws from the bottom of the front cover using a [Phillips #1 screwdriver](#).

Step 5



- Firmly pull the front cover off.

 This piece is difficult to remove and requires force. It may help to use a wide, thin object to pry it off (like a [Jimmy](#)).

To reassemble your device, follow these instructions in reverse order.