



# Nikon Coolpix S7000 Navigation Button Replacement

Replace broken or missing navigation buttons.

Written By: Shannon Beane



## INTRODUCTION

If you've noticed your buttons are no longer functioning, or missing altogether, it may be time to replace them. This guide will take you through the steps to replace the navigation buttons for this particular camera.



### TOOLS:

- [Phillips #000 Screwdriver](#) (1)
-

## Step 1 — Navigation Buttons



- Turn the camera so the bottom side is facing you. Locate the two 40 mm, Phillips head screws on it.
- Using a Philips #J000 Screwdriver, carefully remove each screw.

## Step 2



- Turn the camera to its right side.
- Locate the lone 40 mm, Phillips head screw and remove it.

## Step 3



- Turn the camera so that the left side is facing you.
- Locate and remove the two 40 mm, Phillips head screws.

## Step 4



- Carefully remove the back frame of the camera.

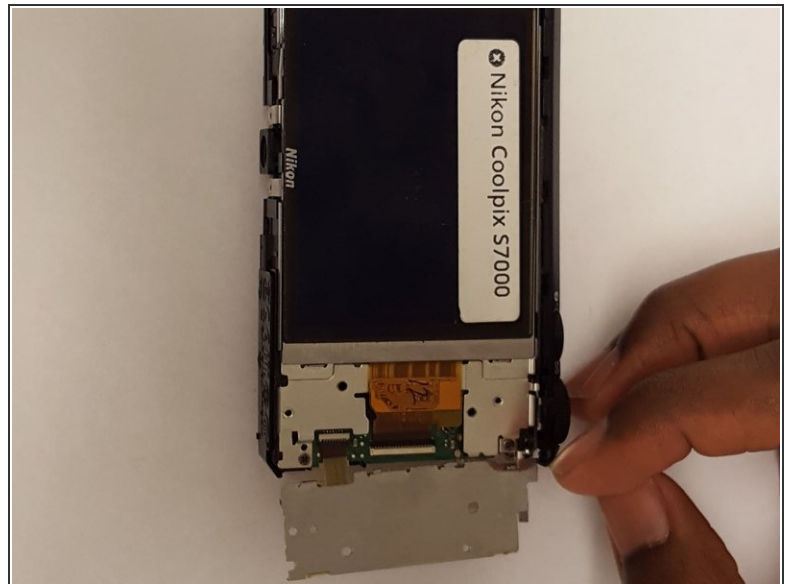
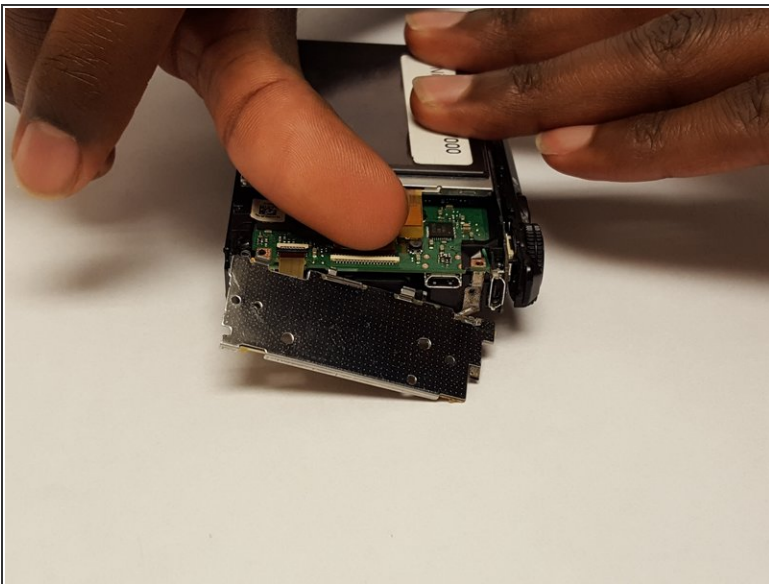


## Step 5



- Locate the two 20 mm, Phillips head screws on the keypad.
- Remove the screws while making sure the keypad doesn't fall off afterwards.

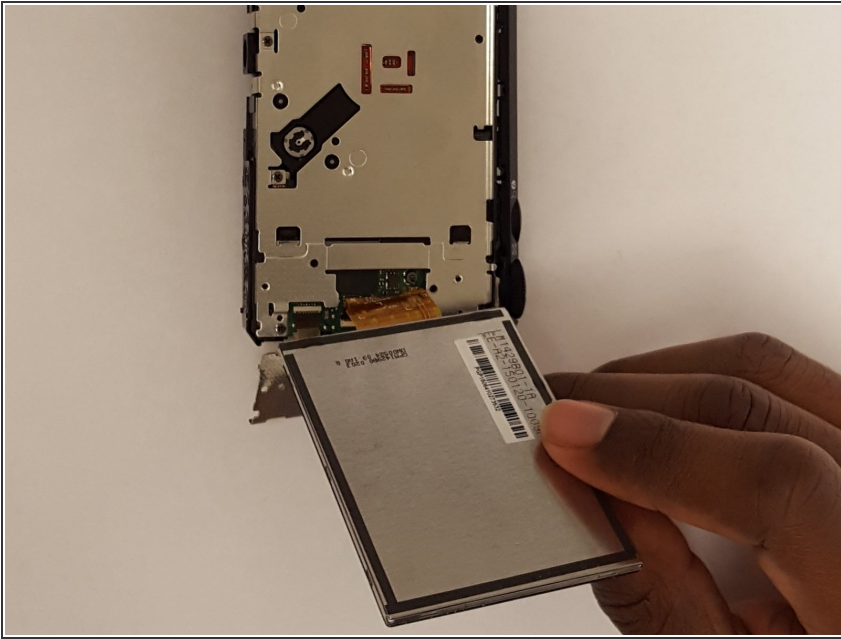
## Step 6



- Using only your fingers, gently flip the keypad away from the camera.

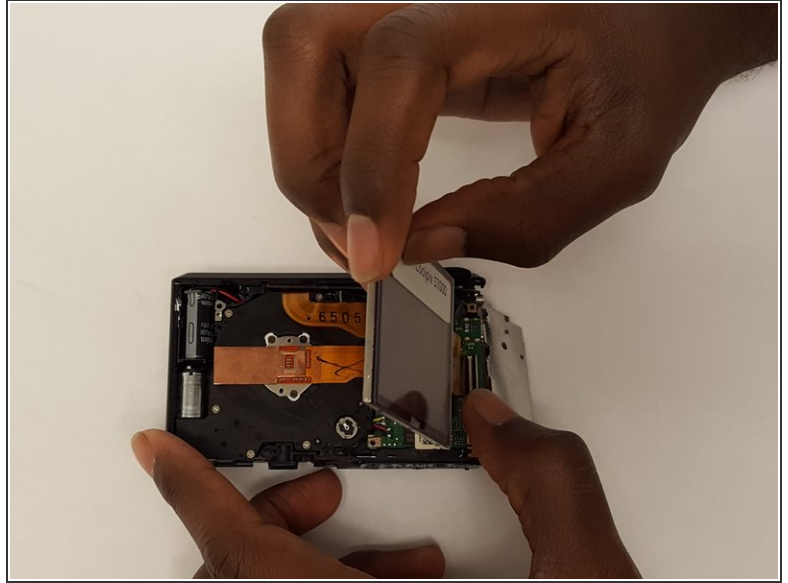
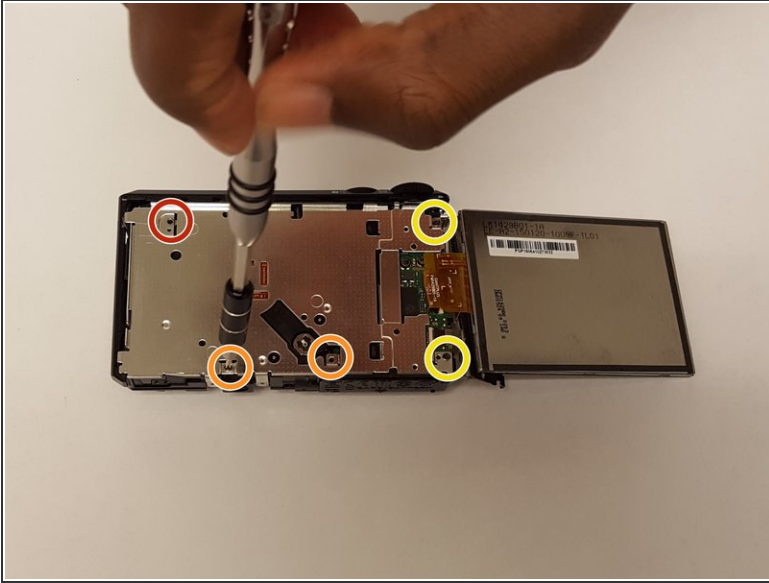
⚠ Take care with the ribbon connecting the keypad and the camera. Do not tug on it, crease it, or otherwise damage the ribbon.

## Step 7



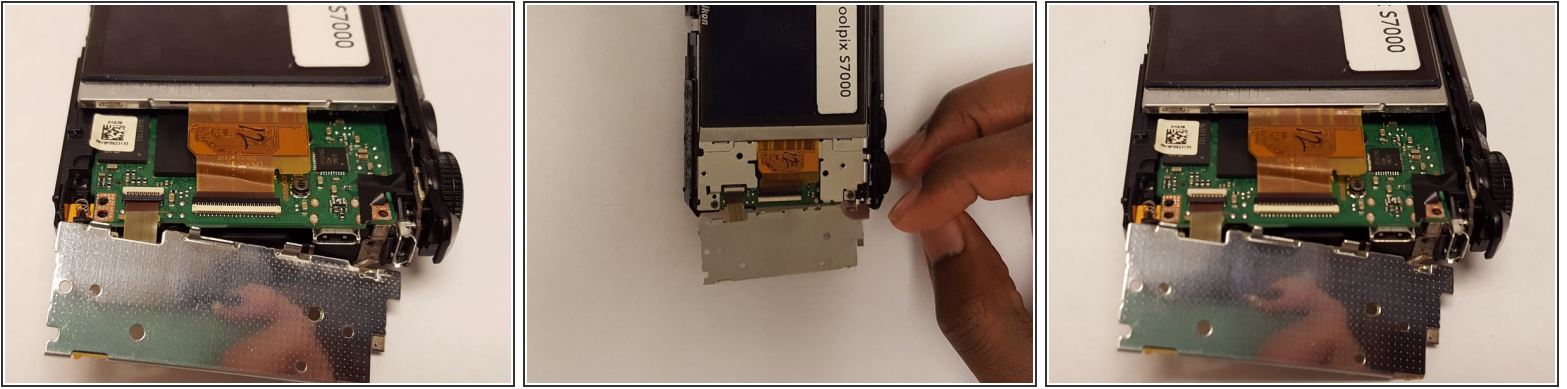
- Carefully flip the LCD display in the same direction as the keypad.
- ⚠ Take care not to damage the ribbon connecting the display to the camera.

## Step 8




- Locate the 30 mm, Phillips head screw in the upper-left corner of the midplate and remove it.
  - There are two 30 mm, Phillips head screws on the bottom side of the midframe. Locate and unscrew them.
  - There are two more 30 mm, Phillips head screws hidden on the right side of the midframe. Locate them and carefully remove them.
- ⚠ The ribbons are in close proximity to the hidden screws. Be careful not to nudge them in any way.
- Once all the screws have been removed, gently lift the midframe to reveal the circuit.

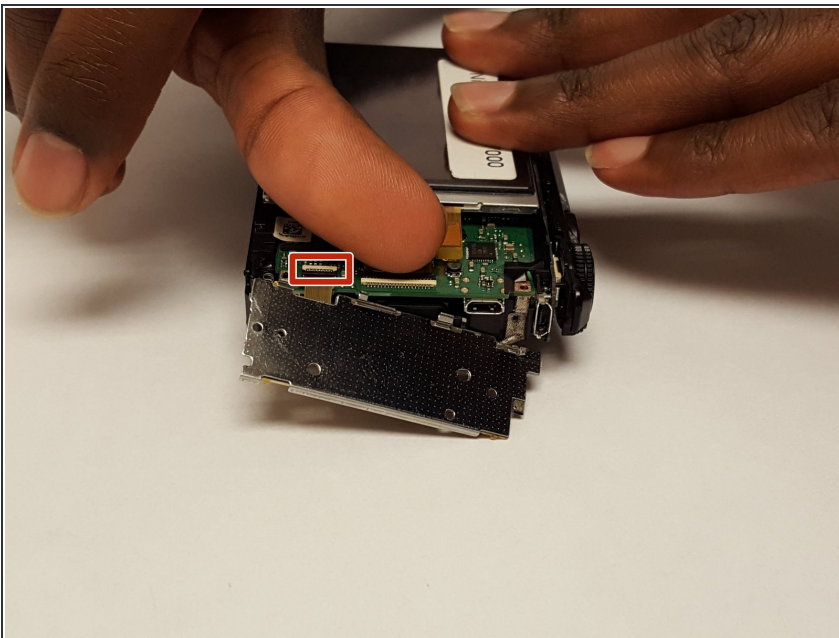
## Step 9




- If you haven't already, with your fingernails, gently flip the tabs connecting to the button pad's ribbon.


 Do not use metal objects for this. Fingernails will suffice. Slide the fingernail under the tab to lift it. You may need to lift it all the way in order to lift the tab.

## Step 10



- Lift the ZIF connector to release the ribbon cable.

 Do not force out the ribbon, or else it will break.

-  The ribbon may bend a little due to its flexibility, but under no circumstances should you crease it.

To reassemble your device, follow these instructions in reverse order.