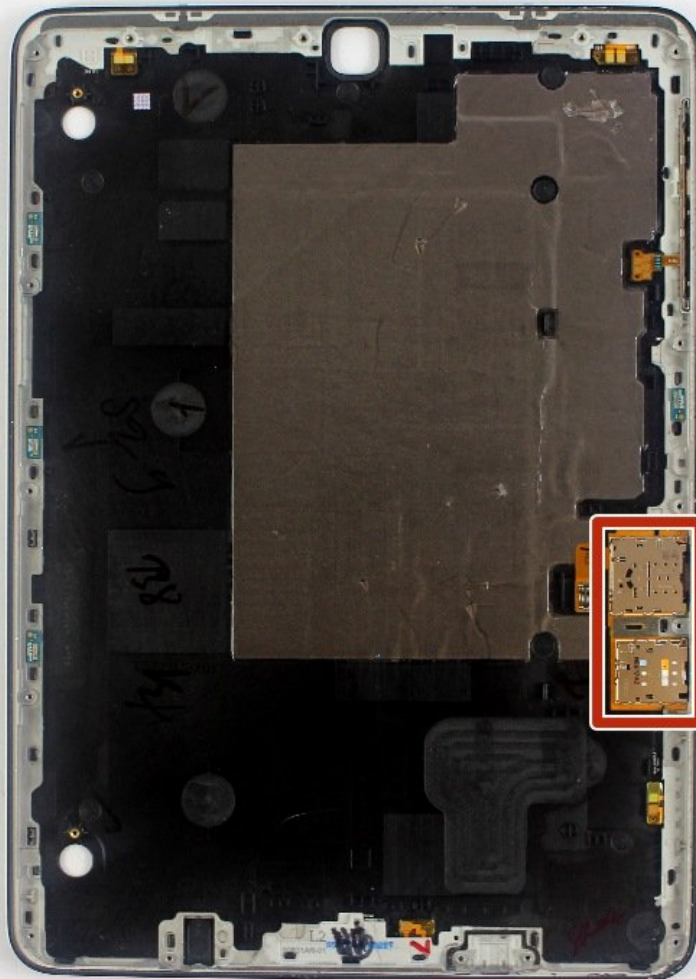




Samsung Galaxy Tab S2 9.7 AT&T SIM Card Holder Replacement

Replace your broken tablet SIM card holder and memory card holder.

Written By: Joy Harris



INTRODUCTION

A broken SIM card holder or memory card holder prevents your tablet from connecting to your network or storing memory, respectively. Before starting, eject the SIM card and memory card trays.

TOOLS:

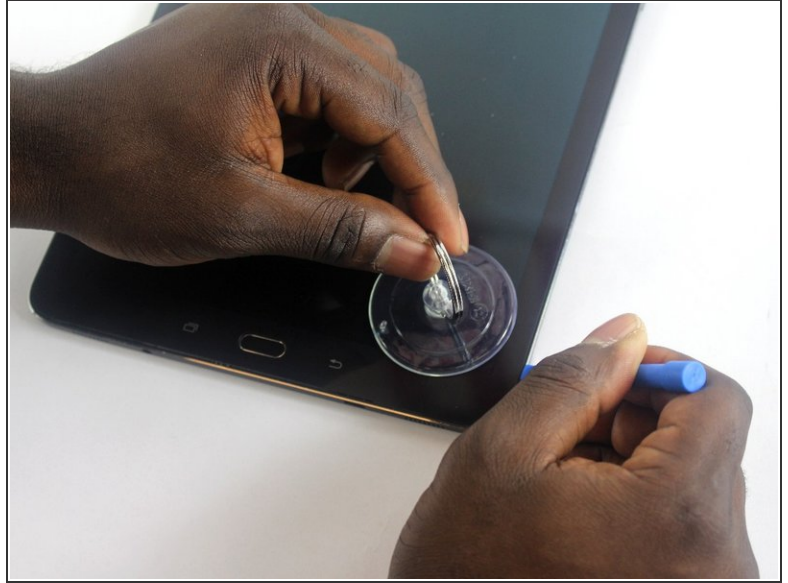
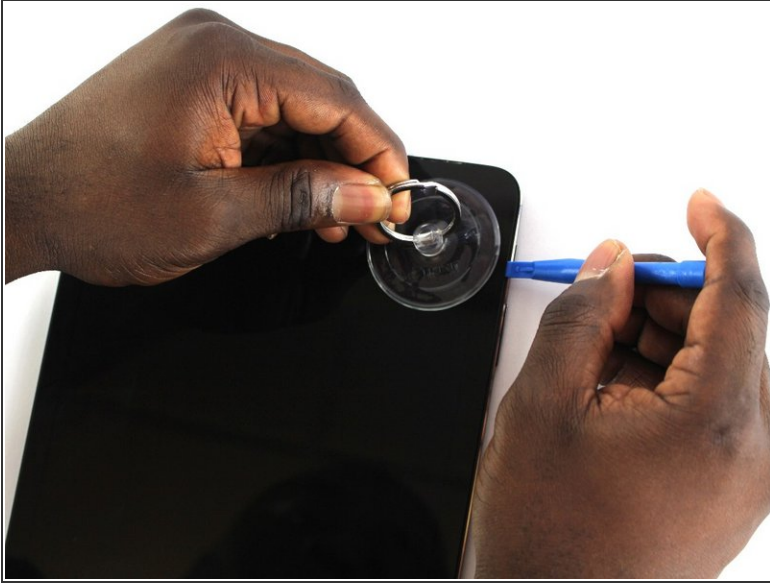
- [iFixit Opening Tools](#) (1)
 - [Precision Tweezers Set](#) (1)
 - [iOpener](#) (1)
 - [Magnetic Project Mat](#) (1)
 - [Suction Handle](#) (1)
 - [Heat Gun](#) (1)
 - [Phillips #000 Screwdriver](#) (1)
 - [Heavy-Duty Spudger](#) (1)
-

Step 1 — Screen



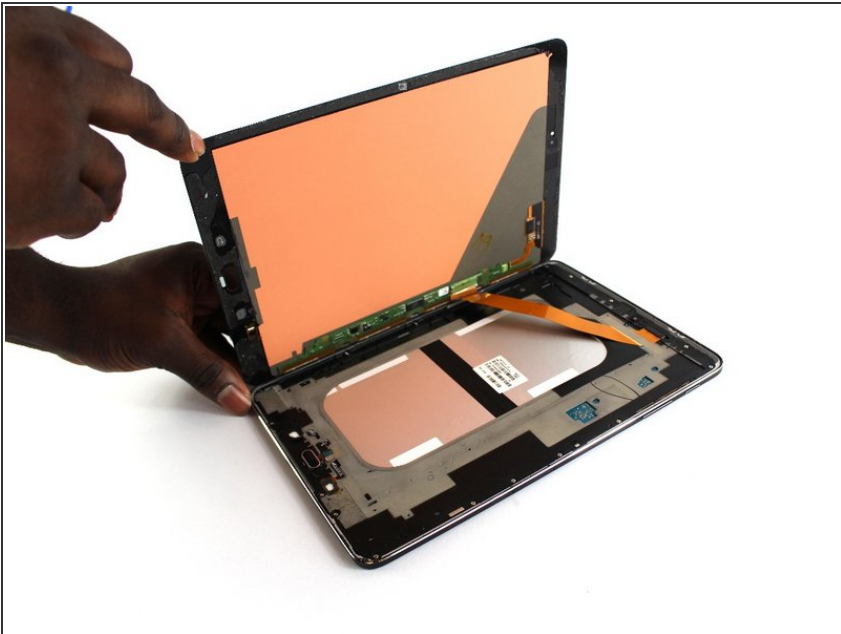
- Apply the heat gun around the edges of the tablet to melt the adhesive glue.
- ⓘ Do not allow the gun to remain still for more than two seconds, so that you do not melt the plastic around the screen.
- ⓘ If you do not have access to a heat gun, you may also use an iOpener or a hair dryer. Refer to the [iOpener guide](#) for extra help.

Step 2



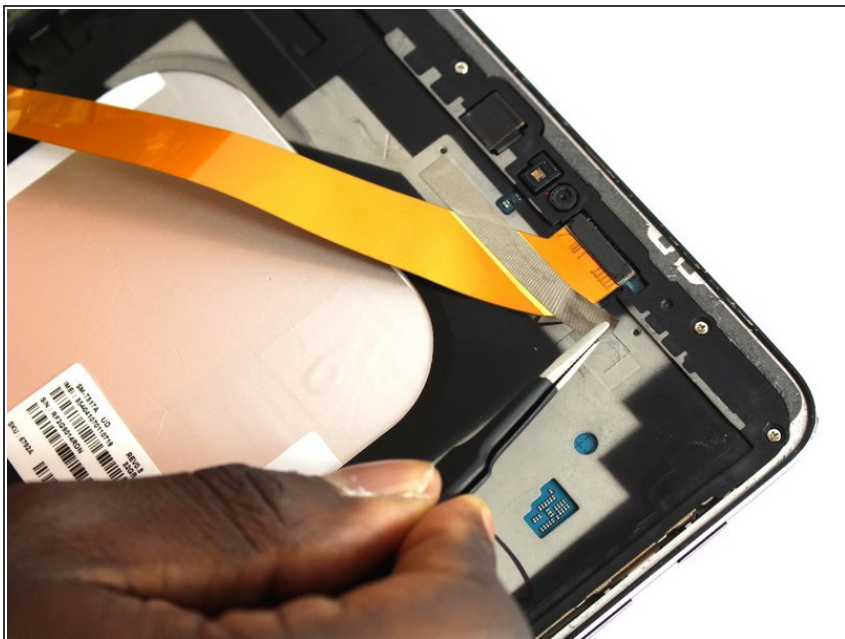
- Apply the suction to the bottom or top right corner.
- Use the plastic opening tool at several points around the screen while the suction is being applied to pop the screen out.

Step 3



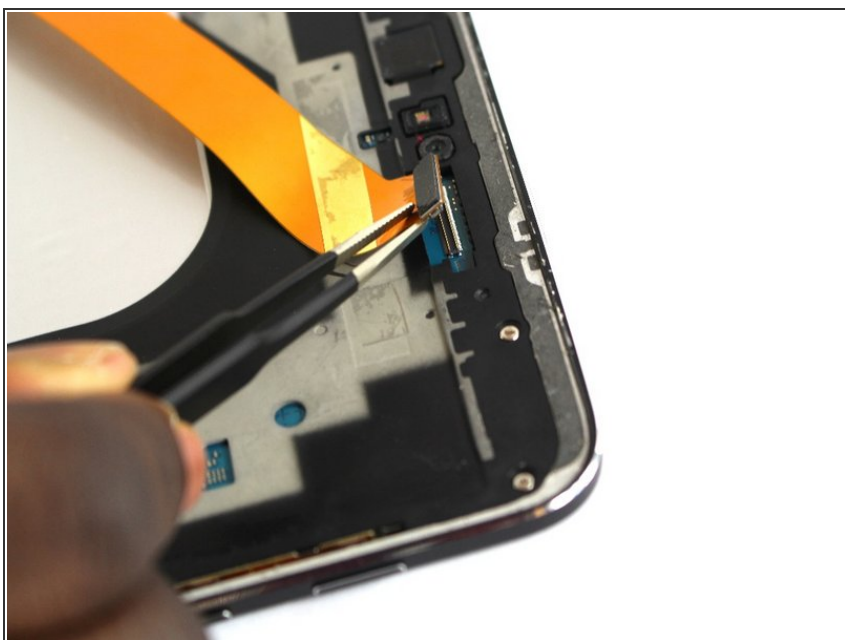
- Once the screen is detached, open the tablet like a book.
- ⚠ Gently open the tablet, and do not pull the pieces apart since you can risk damaging the orange ribbon cable.

Step 4



- Using the precision tweezers, remove the silver tape that is holding the orange ribbon cable connecting the two pieces.

Step 5



- Using the precision tweezers, remove the small press-fit connector from the body of the tablet.

Step 6 — Screws



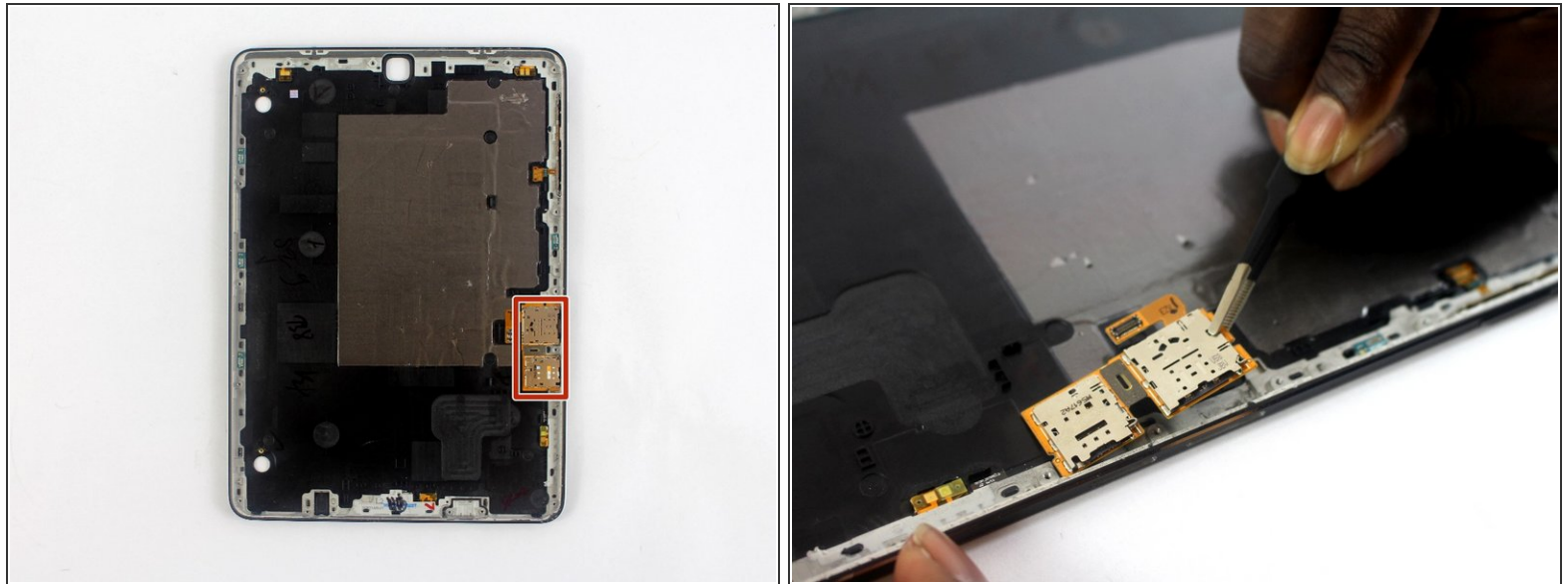
- Using the Philips #000 screwdriver, remove the seventeen 2.74 mm screws around the edges.
- Remove the two 2.74 mm black screws in the middle of the tablet with the Philips #000 screwdriver.
- ⓘ Put the screws on a magnetic project mat or in a container so that you do not lose them.

Step 7



- Take the plastic opening tool around the tablet to remove the motherboard from the device.

Step 8 — SIM Card Holder



- Locate the SIM card and the memory card holders along the right side of the tablet.
- Using the precision tweezers, remove the SIM card and memory card holders.

To reassemble your device, follow these instructions in reverse order.