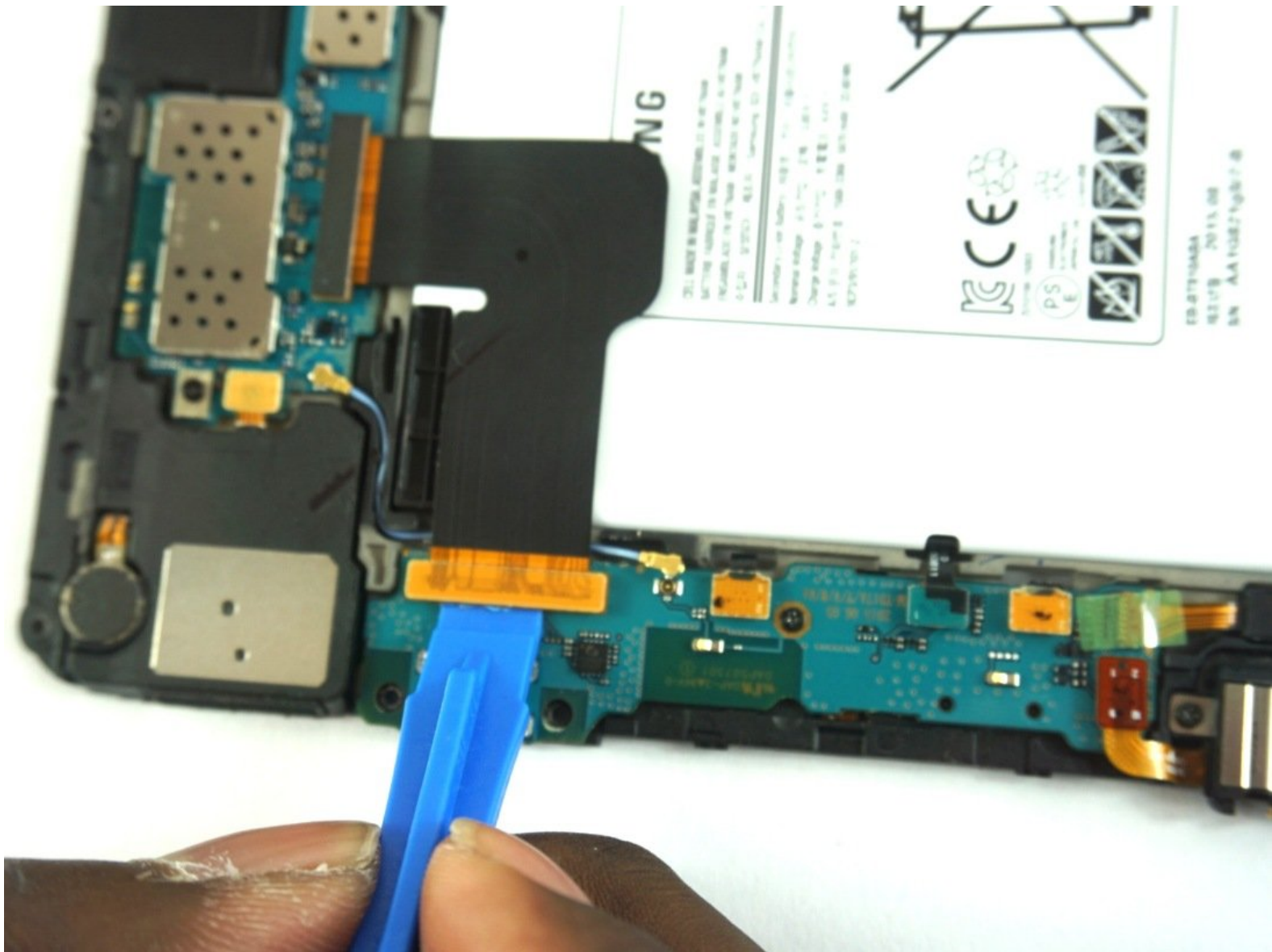




Samsung Galaxy Tab S2 9.7 AT&T Battery Replacement

Replace your corrupt battery to bring power back to your tablet.

Written By: Joy Harris



INTRODUCTION

A dead battery means that the tablet will not work. Before replacing the battery, make sure the device is unplugged and turned off.



TOOLS:

- [iOpener](#) (1)
- [Magnetic Project Mat](#) (1)
- [Suction Handle](#) (1)
- [iFixit Opening Tools](#) (1)
- [Heat Gun](#) (1)
- [Precision Tweezers Set](#) (1)
- [Phillips #000 Screwdriver](#) (1)



PARTS:

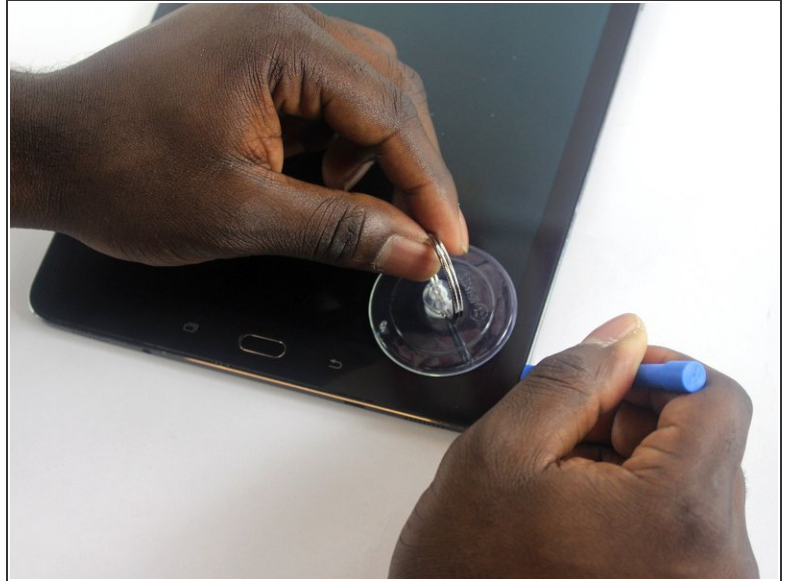
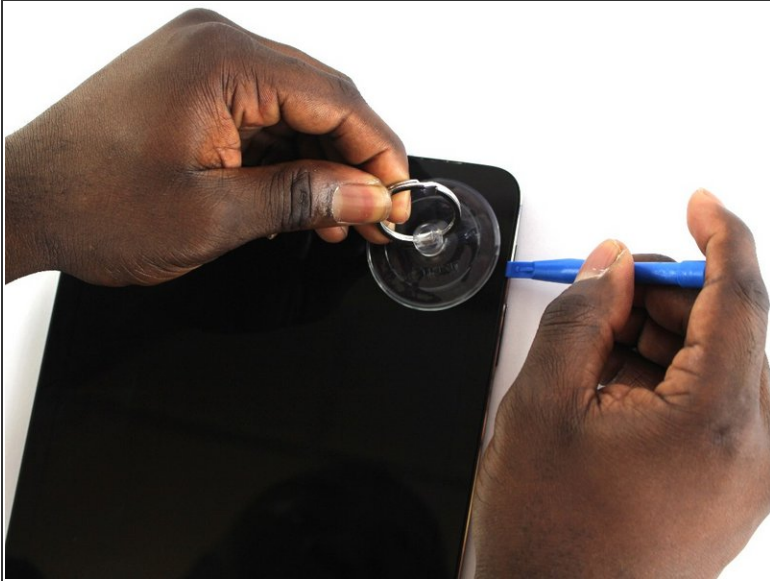
- [Galaxy Tab S2 9.7 Replacement Battery](#) (1)

Step 1 — Screen



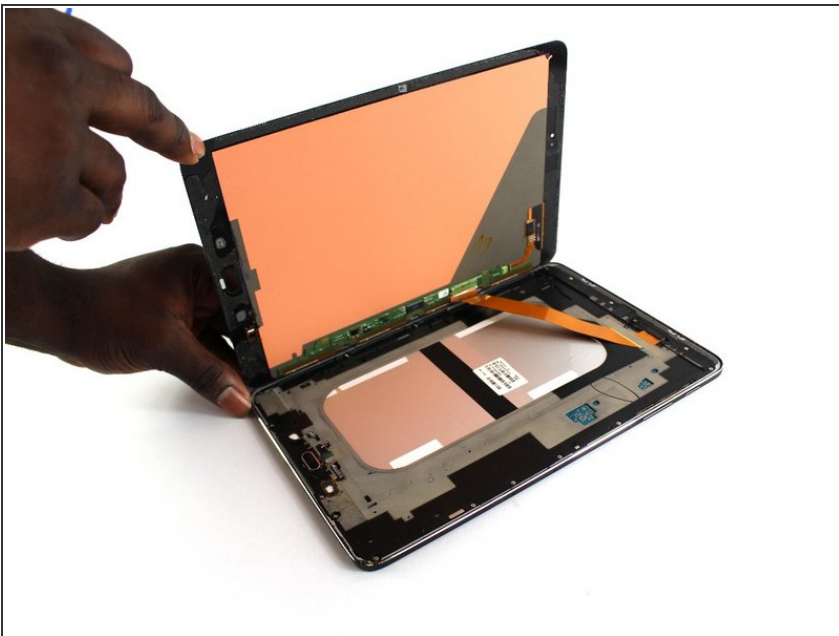
- Apply the heat gun around the edges of the tablet to melt the adhesive glue.
- ⓘ Do not allow the gun to remain still for more than two seconds, so that you do not melt the plastic around the screen.
- ⓘ If you do not have access to a heat gun, you may also use an iOpener or a hair dryer. Refer to the [iOpener guide](#) for extra help.

Step 2



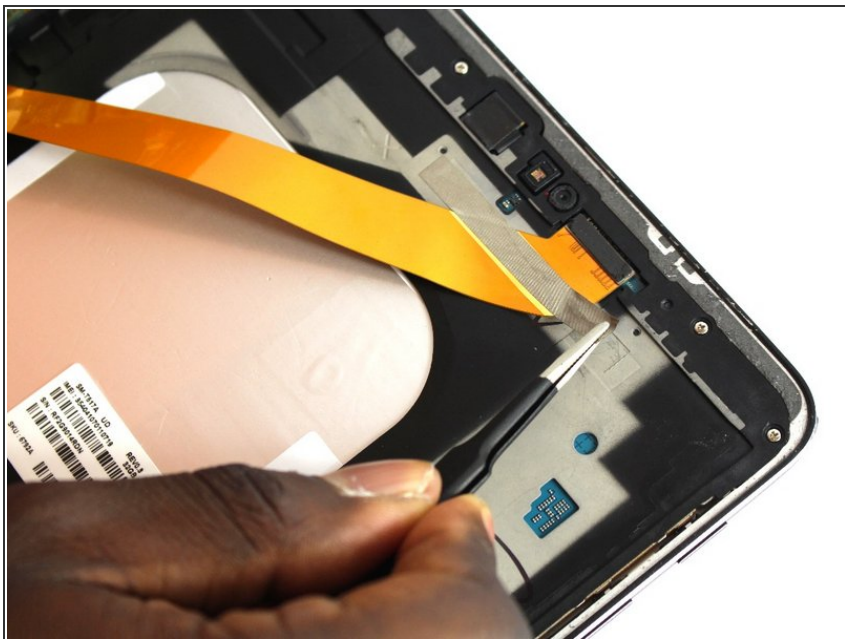
- Apply the suction to the bottom or top right corner.
- Use the plastic opening tool at several points around the screen while the suction is being applied to pop the screen out.

Step 3



- Once the screen is detached, open the tablet like a book.
- ⚠ Gently open the tablet, and do not pull the pieces apart since you can risk damaging the orange ribbon cable.

Step 4



- Using the precision tweezers, remove the silver tape that is holding the orange ribbon cable connecting the two pieces.

Step 5



- Using the precision tweezers, remove the small press-fit connector from the body of the tablet.

Step 6 — Screws



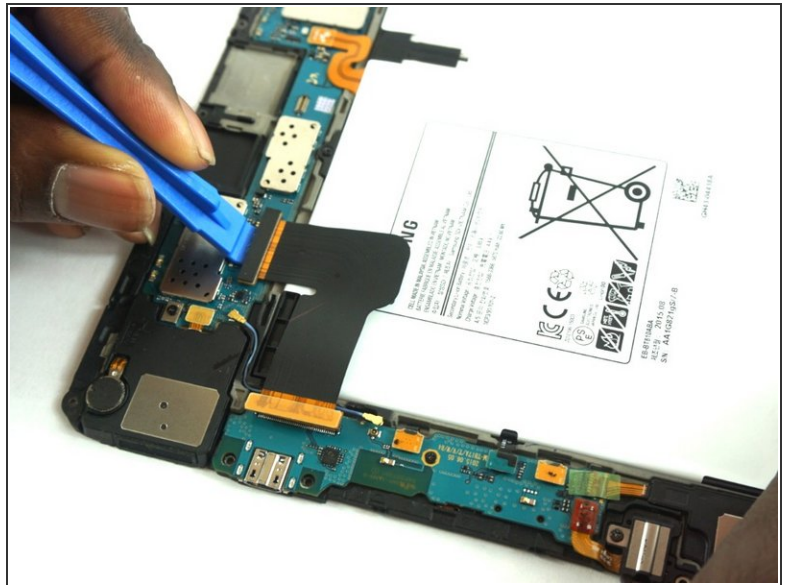
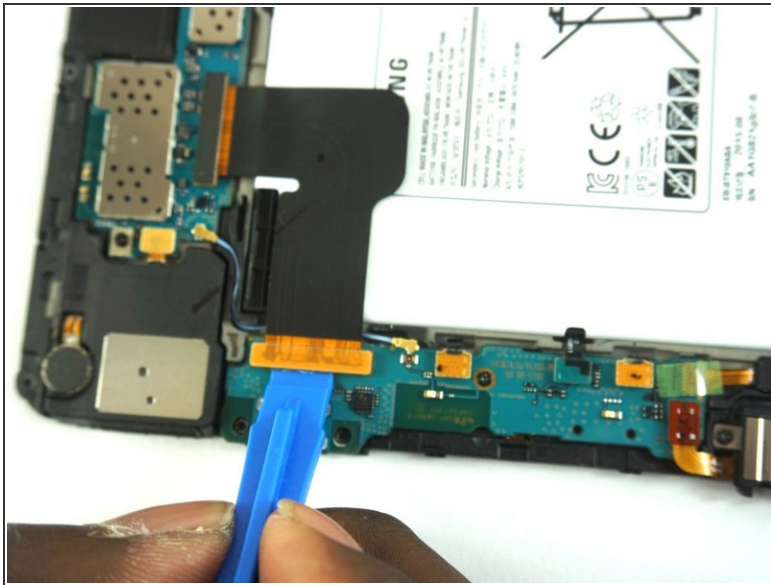
- Using the Philips #000 screwdriver, remove the seventeen 2.74 mm screws around the edges.
 - Remove the two 2.74 mm black screws in the middle of the tablet with the Philips #000 screwdriver.
- i** Put the screws on a magnetic project mat or in a container so that you do not lose them.

Step 7



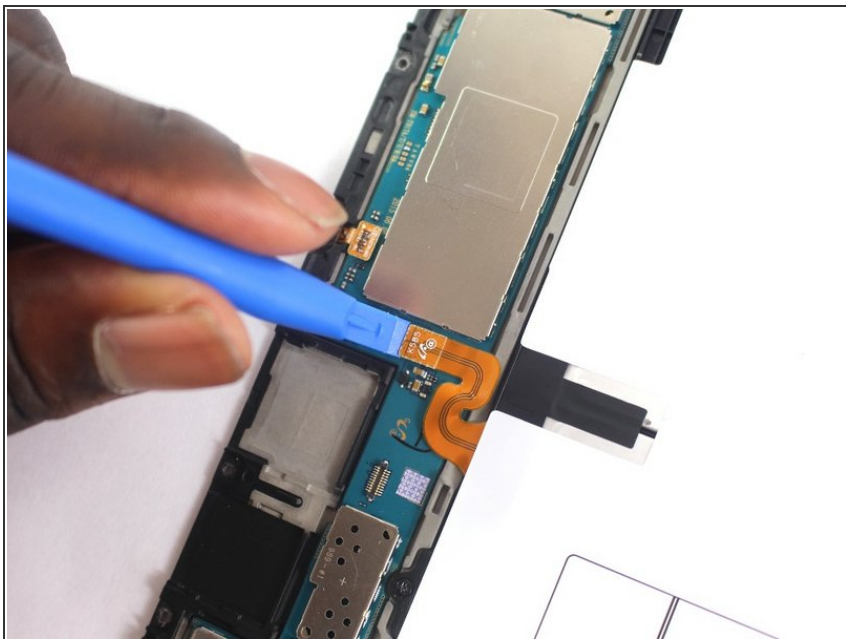
- Take the plastic opening tool around the tablet to remove the motherboard from the device.

Step 8 — Battery



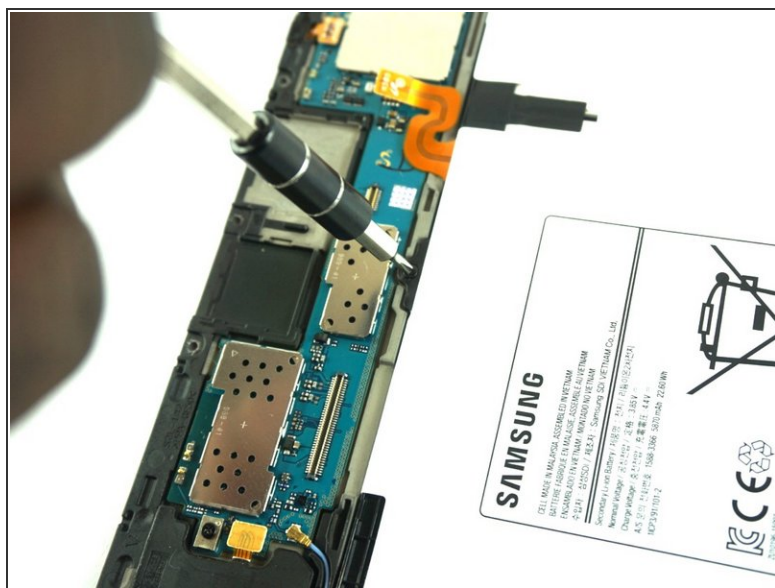
- At the bottom left of the battery, use the plastic opening tool to detach the lower press-fit connector of the black ribbon cable.
- Using the plastic opening tool, detach the press-fit connector on the left side of the black ribbon cable.
- Lift up the black ribbon cable to remove it.

Step 9



- Using the plastic opening tool, detach the orange ribbon cable connecting the battery to the motherboard.

Step 10



- Using the Phillips #000 Screwdriver, remove the four 2.74mm black screws around the edge of the battery.

Step 11



- The battery is now fully detached from the motherboard.
- Lift up the battery to remove it from the motherboard.

To reassemble your device, follow these instructions in reverse order.