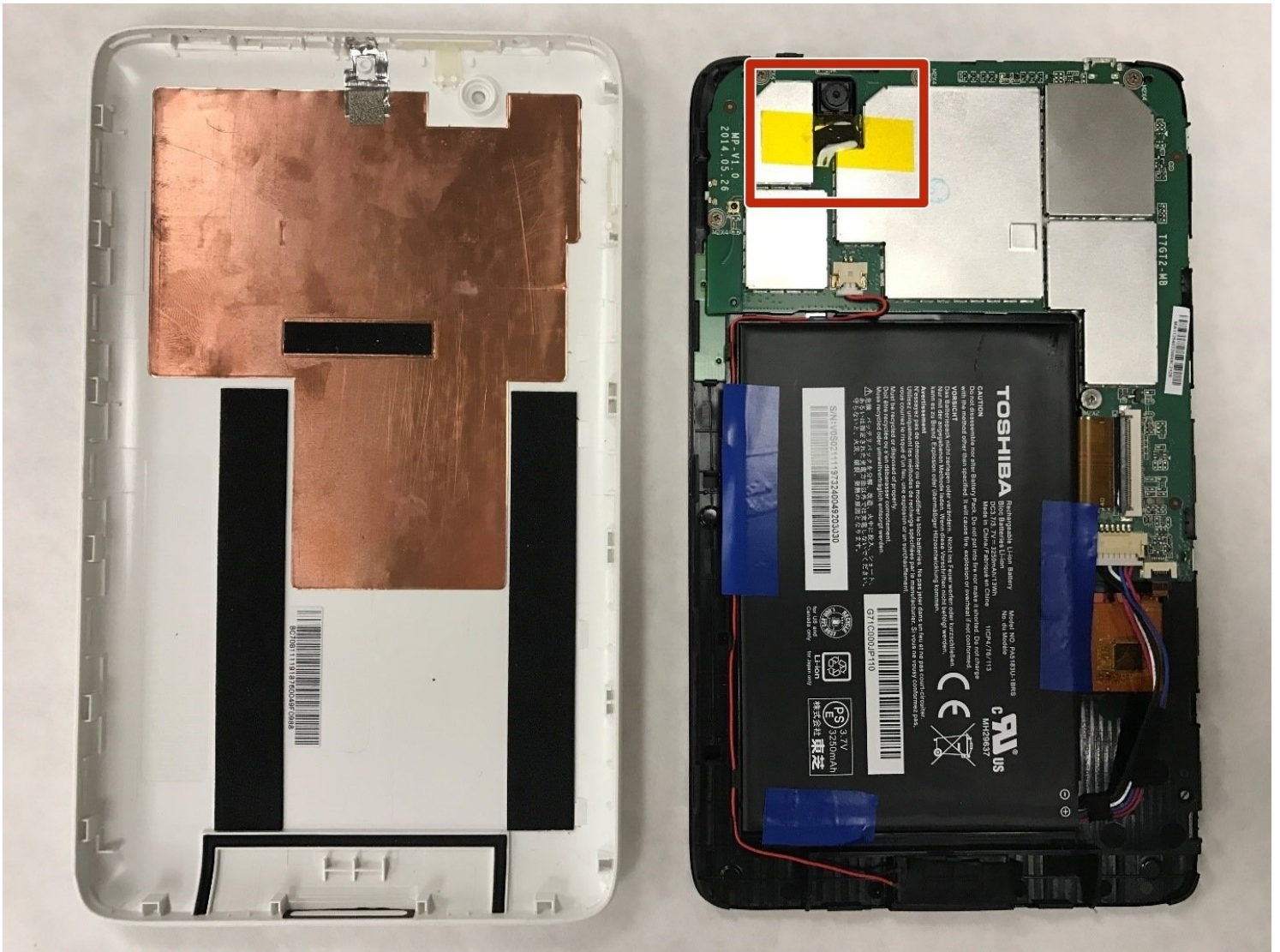




Toshiba Encore Mini Rear-Facing Camera Replacement

The Toshiba Encore Mini has a rear-facing...

Written By: Anthony Bivens



INTRODUCTION

The Toshiba Encore Mini has a rear-facing camera which is attached to the motherboard and requires battery removal for replacement. Therefore be advised to backup any data to external storage before beginning. As well as obtain a system to organize small screws and hand tools.

TOOLS:

[iFixit Opening Tool](#) (1)

[Spudger](#) (1)


[Phillips #000 Screwdriver](#) (1)

[Tweezers](#) (1)

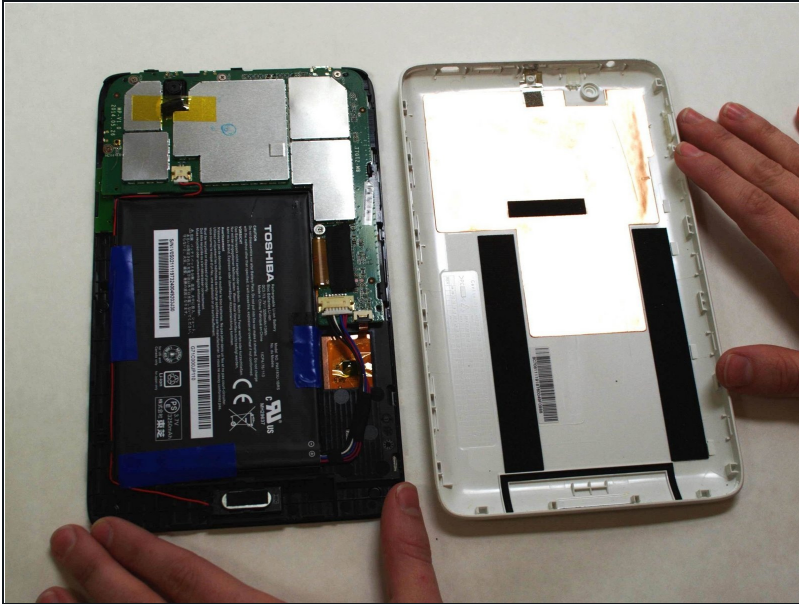
Step 1 — Battery



 To replace the battery, the rear cover must first be removed.

- Using the flat end of the spudger, gently pry open the back case from the rest of the device.
-  It may be easier to start along one of the long edges and carefully work your way toward the corner, then along the short edge.**

Step 2



- Remove the rear cover and set it aside.

Step 3



- Carefully remove the electrical tape that holds the battery in place.

Step 4




- Using needle-nose tweezers, gently push the large white wire connector (connected to the black, red and blue wires) out of its housing.

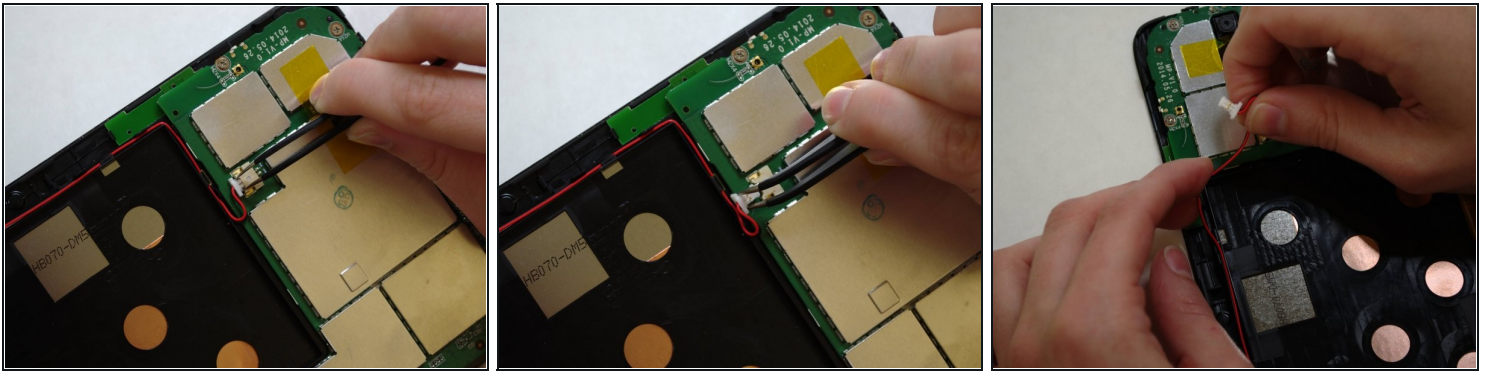
Step 5



- Gently lift the battery out of the device.

 Be careful not to pull on the connecting wires.

Step 6 — Front-Facing Camera



i The audio module must be removed to replace the front-facing camera.

- Using needle-nose tweezers, carefully push the small white wire connector (red/black wires) out of its housing.
- Gently remove red/black wire strands from the clips holding them to the back of the screen.

Step 7

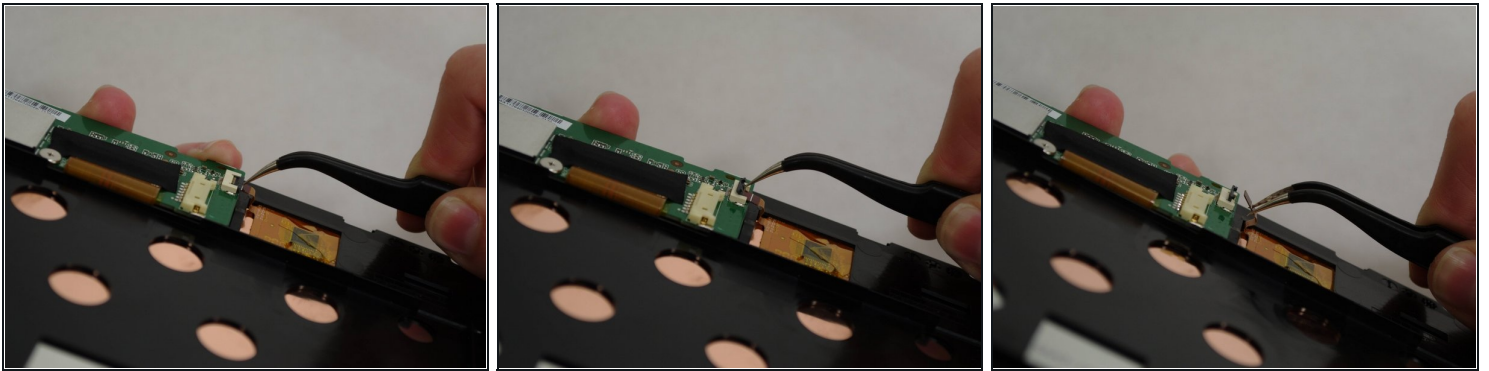


- Gently pry audio module from the back of the screen using tweezers and spudger. **Be careful not to pull on the wires.**

i Adhesive on the bottom of the speaker module may make it difficult to remove.

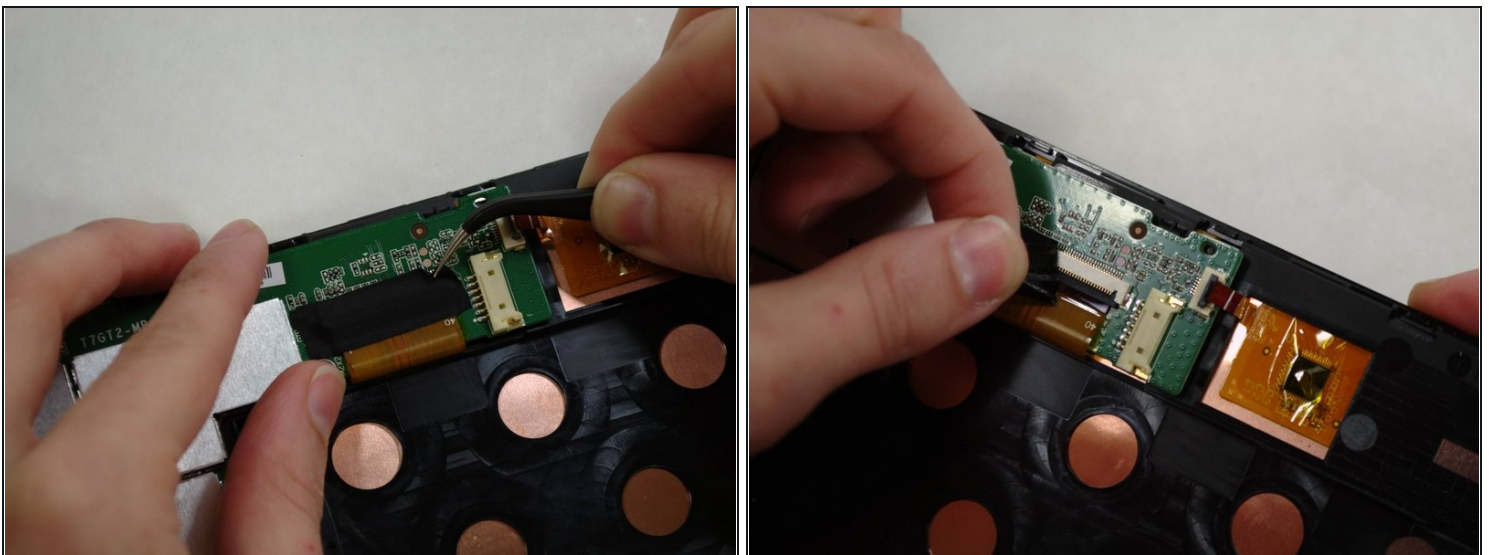
- Set the audio module and attached wire aside.

Step 8



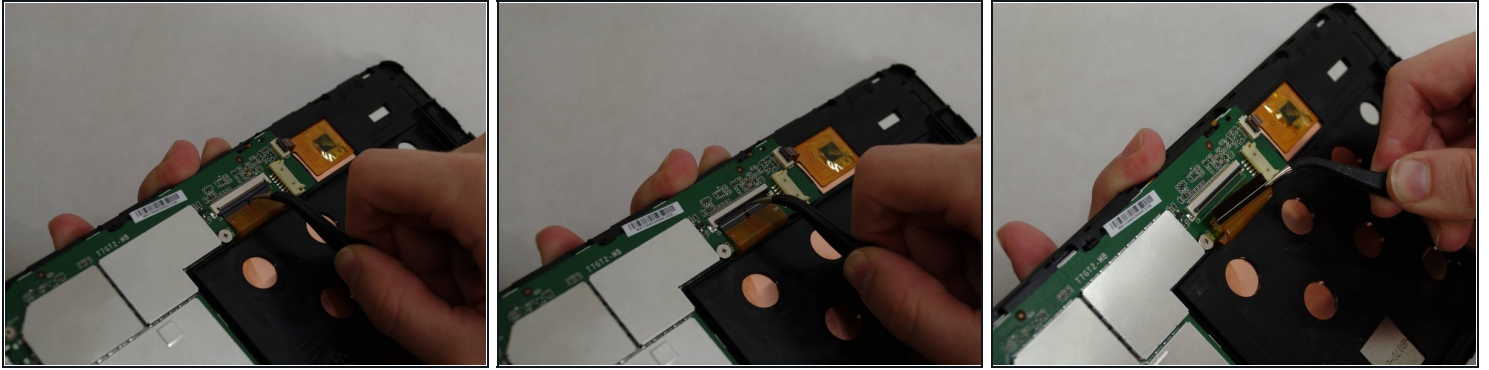
- Using needle-nose tweezers, **carefully** flip up the dark gray cover on the right of the device holding the **small** orange ribbon in place. (It is approximately 1/4" wide.)
- With the tweezers, **carefully** pull the small ribbon out of its housing. It will stay attached to the device at the other end.

Step 9



- ① A wide orange/gold ribbon connects the screen to the motherboard. (Ribbon is approximately 1" wide.)
- Carefully pull the black tape off the ribbon housing and set it aside. You will need to replace the tape when reassembling the device.

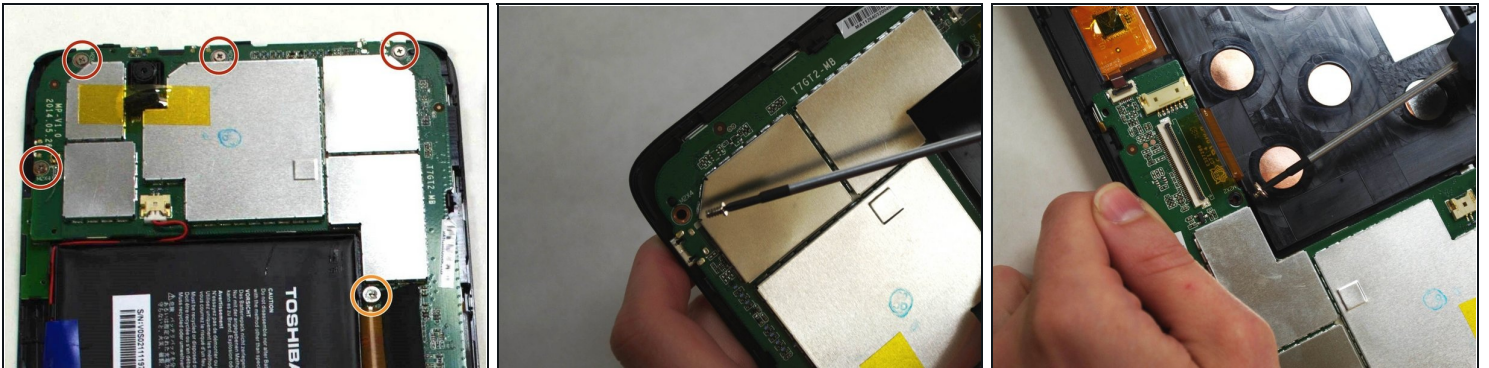
Step 10



⚠ Damaging this ribbon will permanently disable your device!

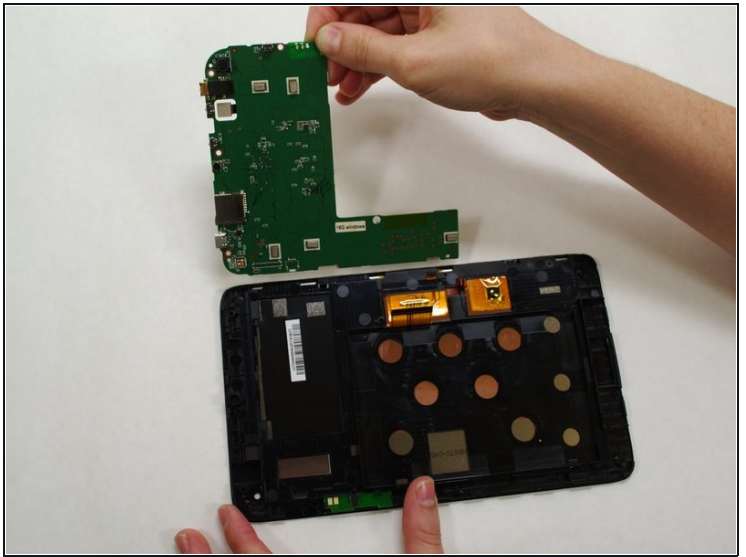
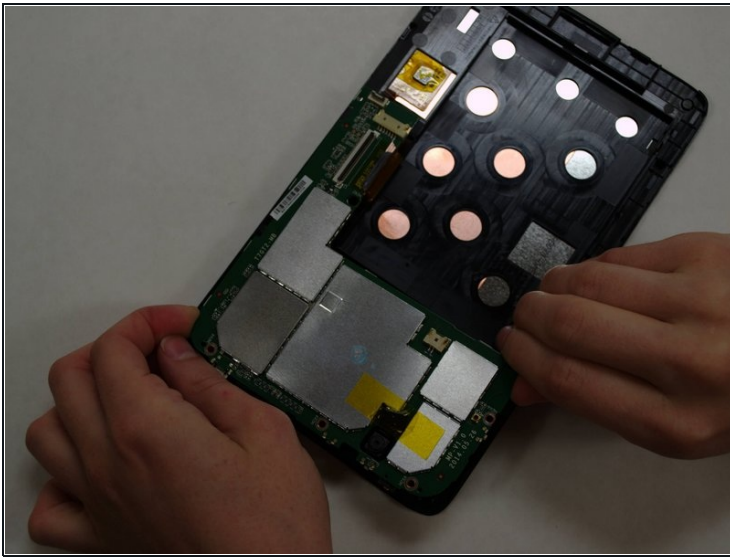
- Using needle-nose tweezers, **carefully** flip up the dark gray cover.
- With the tweezers, **carefully** pull the wide ribbon from its housing. It will stay attached to the device at the other end.

Step 11



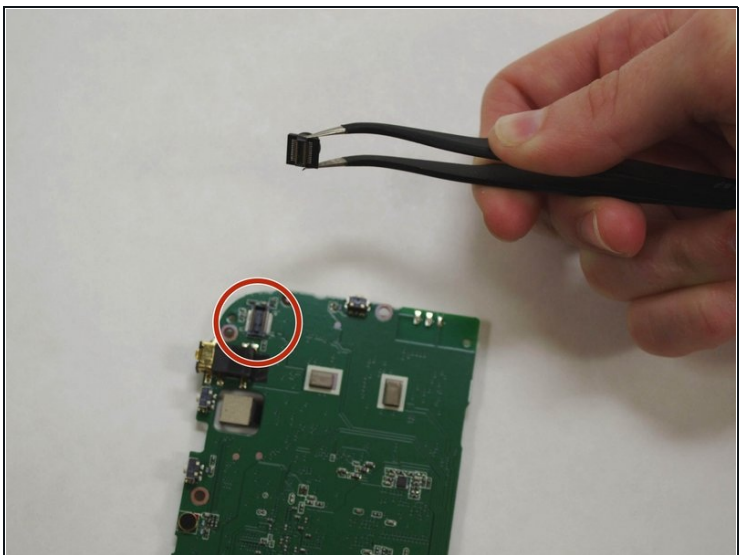
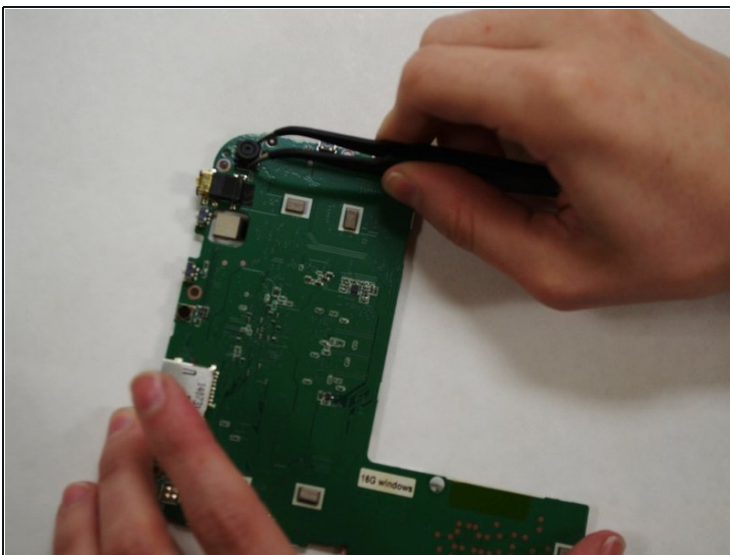
- Using a Phillips 000 screwdriver, remove the screws holding components together.
- Remove *four* 4.2 mm Phillips screws.
- Remove *one* 3mm Phillips screw.

Step 12



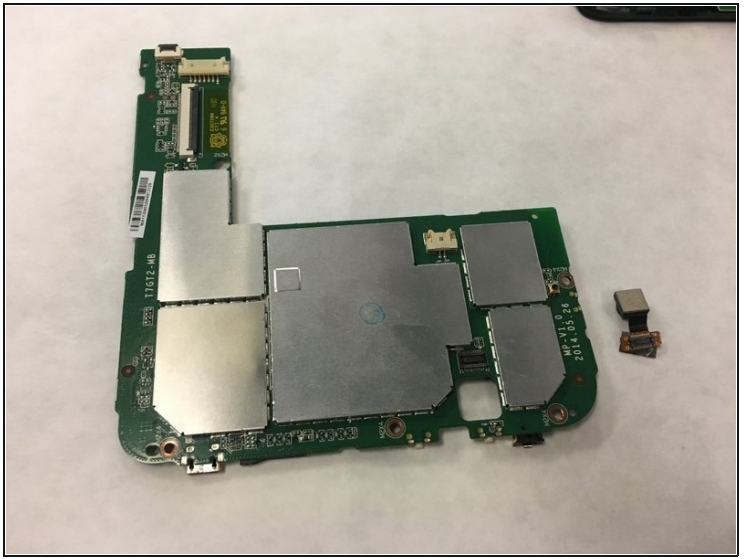
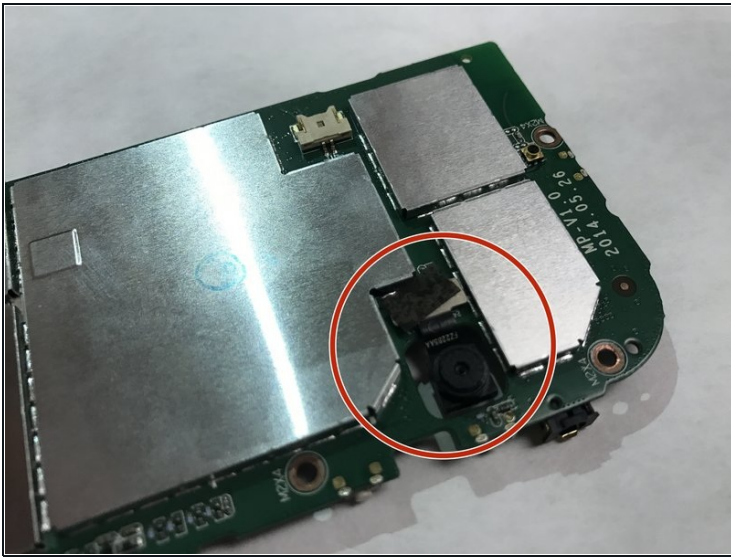
- Holding the motherboard **carefully** by the edges, gently lift it up off the screen and **carefully** set it aside.
- ⓘ The motherboard may resist as you try to lift it --this is normal.

Step 13



- ⓘ The front-facing camera may dislodge freely when removing the motherboard.
- If camera has not already "popped" off the motherboard, use needle-nose tweezers to gently grasp the camera and remove from motherboard.

Step 14 — Rear-Facing Camera



- Remove yellow tape.
- Use tweezers to pull on the camera housing until it is free of the motherboard.

To reassemble your device, follow these instructions in reverse order.