



HP Chromebook CB2L Battery Replacement

This guide helps one remove and replace the Battery of the HP Chromebook CB2L.

Written By: Gregory Hinkson



INTRODUCTION

We are going to help you remove and replace a component of your HP Chromebook CB2L. The component that this guide helps you with is the Battery of the HP Chromebook CB2L. Please take a look at this troubleshooting page to confirm that this component needs replacement.

[HP Chromebook CB2L Troubleshooting](#)



TOOLS:

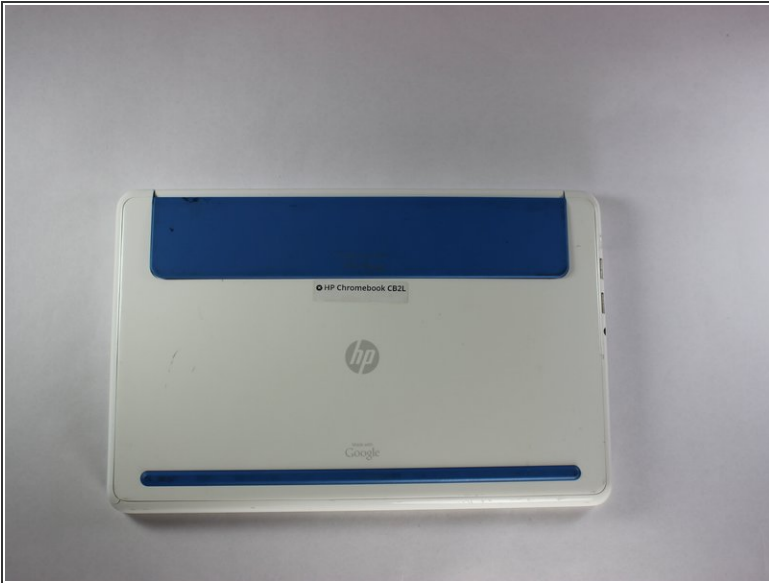
- [iFixit Opening Tools](#) (1)
- [Phillips #1 Screwdriver](#) (1)



PARTS:

- [HP Chromebook CB2L Battery](#) (1)

Step 1 — Battery



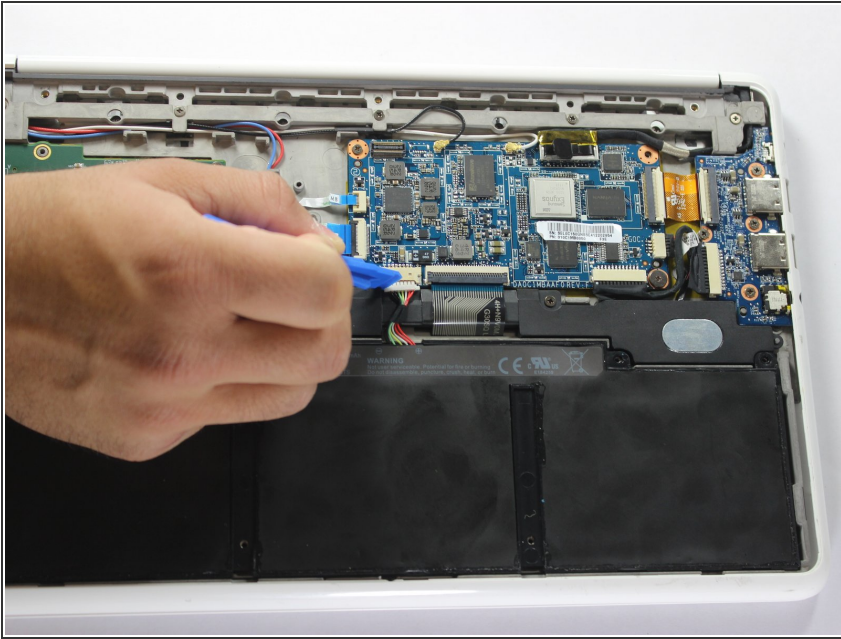
- First flip your HP Chromebook CB2L over such that the bottom is facing upwards.
- Next, using the plastic opening tool remove the blue panel.

Step 2



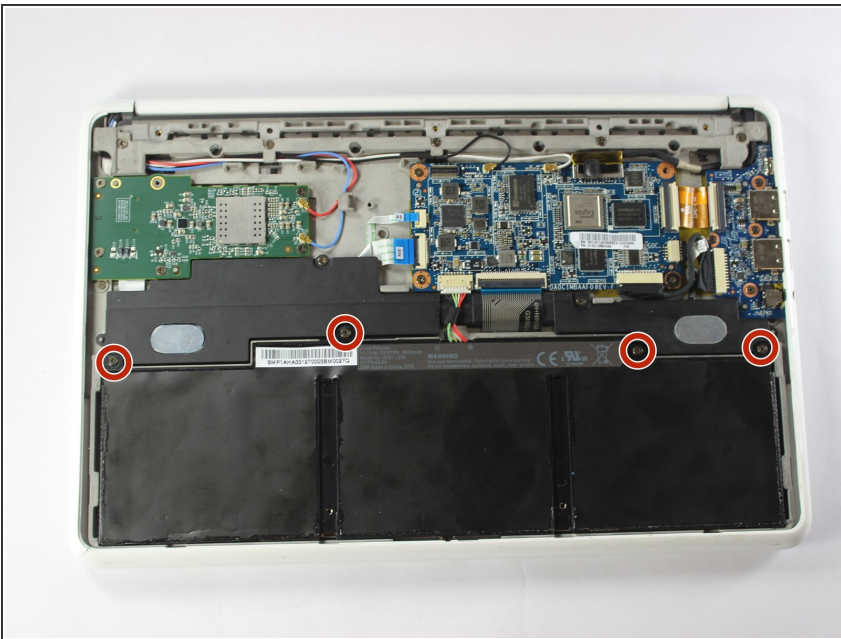
- Using the Phillips #1 screwdriver, remove the six 1.2mm screws.
- Gently pry off the white back panel using the plastic opening tool.

Step 3



- Disconnect the battery input to the motherboard using the plastic opening tool

Step 4



- Unscrew the four 1.2mm screws using the Phillips #1 screwdriver.

Step 5



- Using the plastic opening tool remove the battery from the Chromebook.

To reassemble your device, follow these instructions in reverse order.