



Afterglow Wireless PS3 Controller Prerequisite

This guide will show the steps in moving the battery out of the way to further repair PS3 Wireless Afterglow Controller.

Written By: Aj Coello



INTRODUCTION

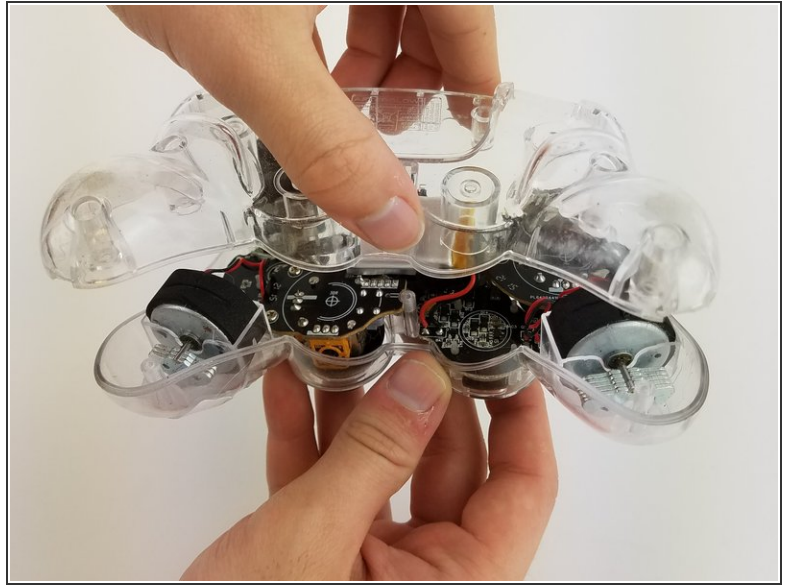
Prerequisite guide for moving the battery in a PS3 Wireless Afterglow Controller.



TOOLS:

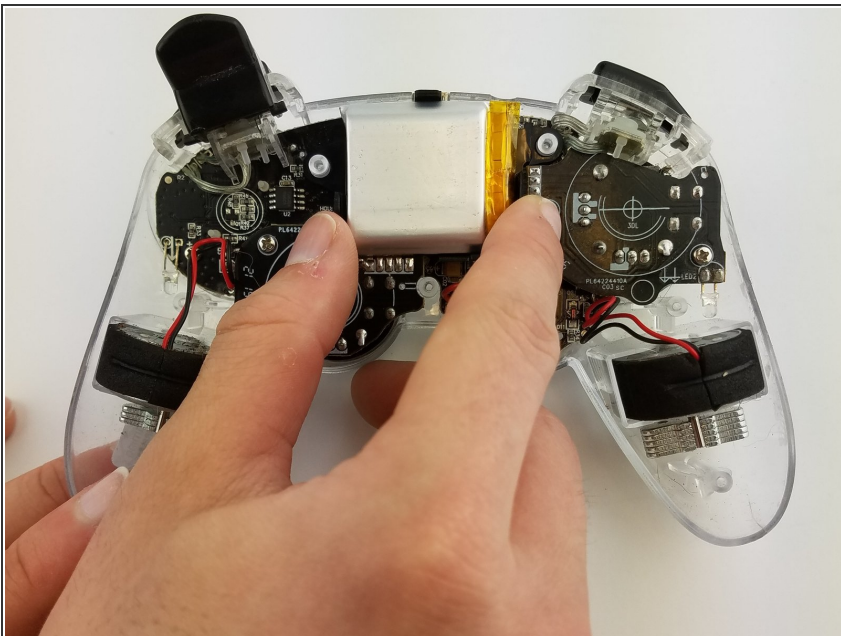
- [64 Bit Driver Kit](#) (1)
 - [Soldering Iron](#) (1)
-

Step 1 — Battery



- Lay the controller face down on a flat surface and remove the seven 9mm Phillips #0 screws on the back of the controller.
- Lift up and remove the controller back plate.

Step 2



- Carefully remove the battery by lifting it straight up from its place.
- ⚠ Keep in mind that the red and black battery wires are attached to the motherboard. Handle these with care.

To reassemble your device, follow these instructions in reverse order.