



Yujin Robot iCLEBO Arte Battery Replacement Guide

Follow this guide to replace the battery on your Yujin Robot iCLEBO Arte.

Written By: Trent Bingel



INTRODUCTION

Replacing the battery is a quick and easy fix if your robot exhibits the symptoms shown in the accompanying troubleshooting section.



TOOLS:

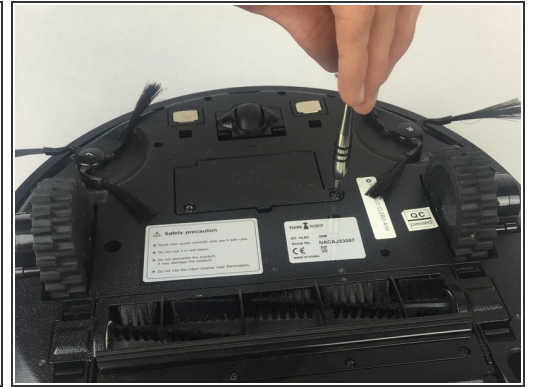
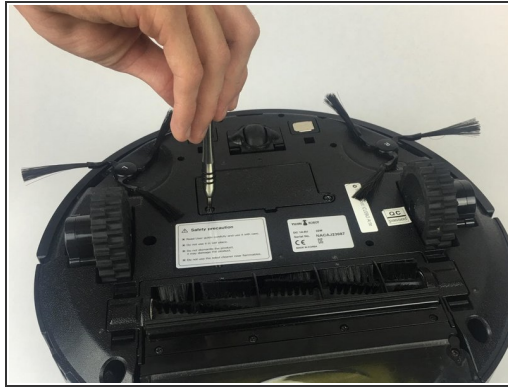
- [Phillips #2 Screwdriver](#) (1)



PARTS:

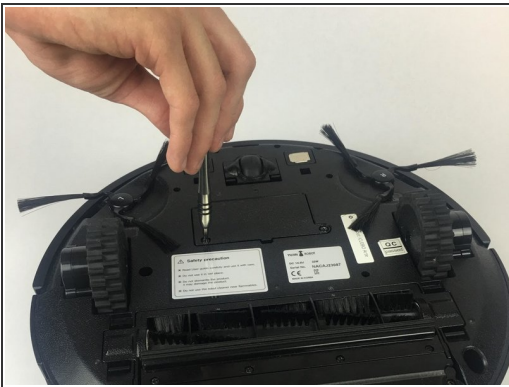
- [Yujin Robot iCLEBO Arte Replacement Battery](#) (1)

Step 1 — Battery



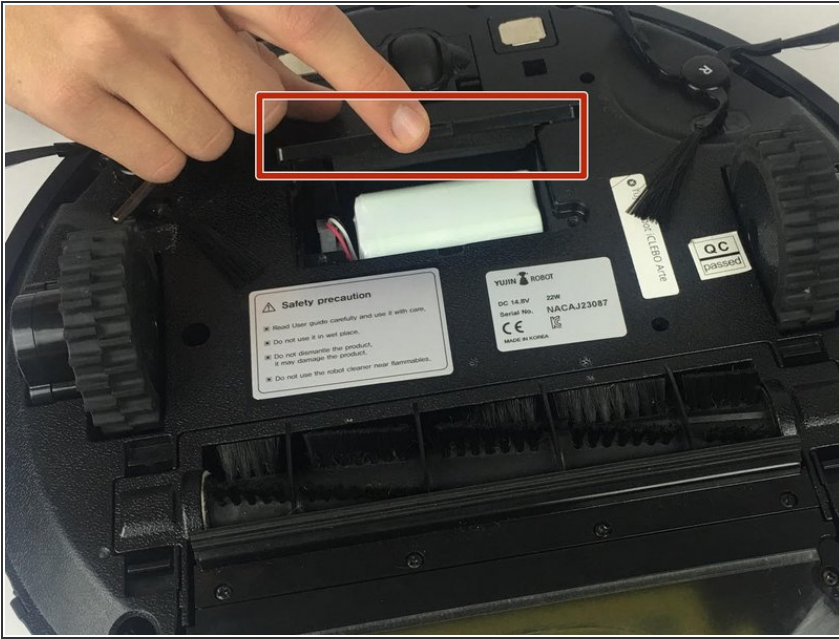
- Locate and unscrew the two 15mm screws with a Phillips #2 screwdriver.

Step 2



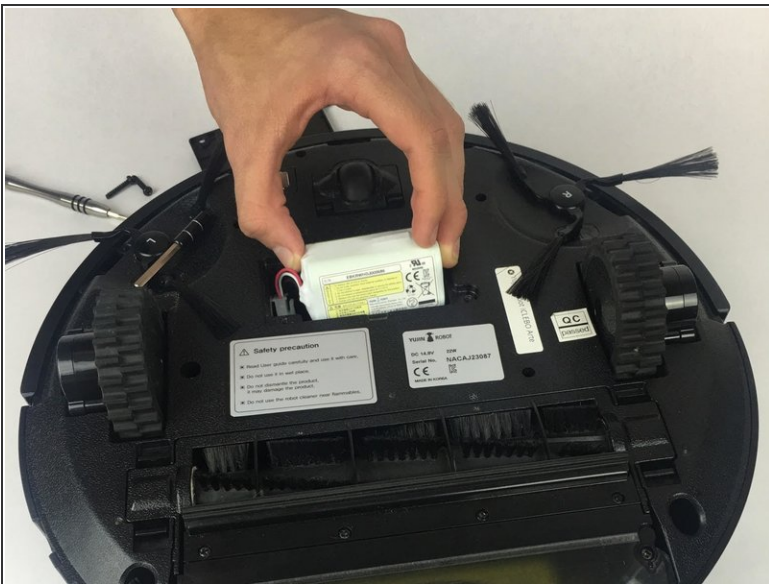
- Remove both screws shown by rotating them counter-clockwise.

Step 3



- Remove the battery compartment's lid.

Step 4



- Slide the battery out, and disconnect it from the robot by squeezing the tab on the power cable.

⚠ If you pull too hard on the connector without properly squeezing the tab, something will break.

To reassemble your device, follow these instructions in reverse order.