



# Canon PowerShot SX600 HS Battery Replacement

This will assist in the replacement of the Battery in the Canon PowerShot SX600 HS. How to properly place it in the camera and take it out.

Written By: Jennyfer Munoz



## INTRODUCTION

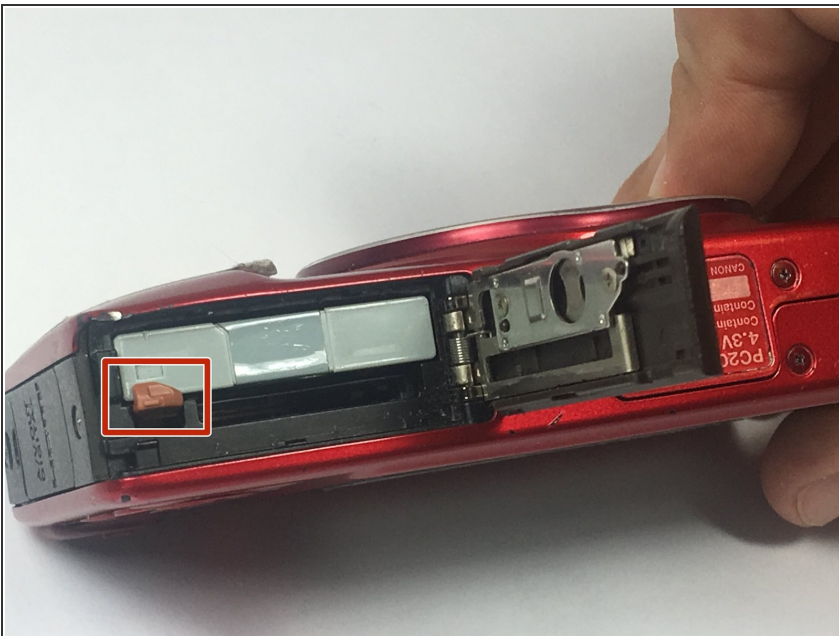
Problems with the Canon PowerShot SX600 HS camera may arise when there exists an issue with the battery, such as if its not working, placed improperly, or missing. In the guide it will show how you can replace the battery.

## Step 1 — Battery



- To remove the battery, locate the battery cover on the bottom of the camera.
- Using your thumb, press down on the cover and slide it outwards.

## Step 2



- Depress the orange lever holding the battery in place to unlock it.

## Step 3



- Use your fingers to remove the battery.
- ☑ Be sure to remember the alignment of the nodes for reassembly.

To reassemble your device, follow these instructions in reverse order.