



Acer Aspire One 725-0845 Battery Replacement

A step-by-step guide to replacing the battery in the Acer Aspire One 725-0845.

Written By: Jose Souto



INTRODUCTION

The battery is the power source for the device. A damaged or faulty battery will cause the device to not power on. If you have followed all the steps in the [Troubleshooting Guide](#) and found that you have a damaged or faulty battery, this step-by-step guide will lead you through the process of removing and replacing the battery.



TOOLS:

- [Spudger](#) (1)



PARTS:

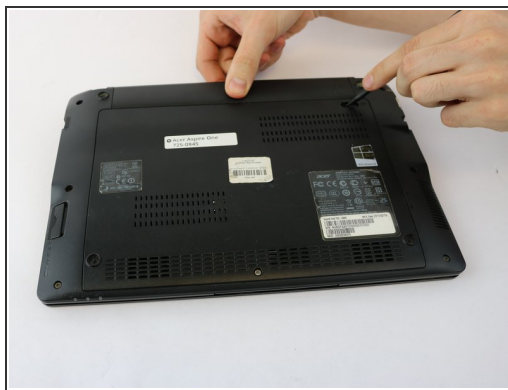
- [Acer Aspire One 725-0845 Battery, 6-cell Li-ion 4400mAh](#) (1)

Step 1 — Battery



- Ensure the device is powered off by holding down the power button on the top left-hand side.
- On a flat, level surface, flip the device over so that the back-plate is accessible.

Step 2



- Using a spudger or any fine-pointed tool, push the release slide away from the center of the device.
- Simultaneously pull the battery out and away from the device.

To reassemble your device, follow these instructions in reverse order.