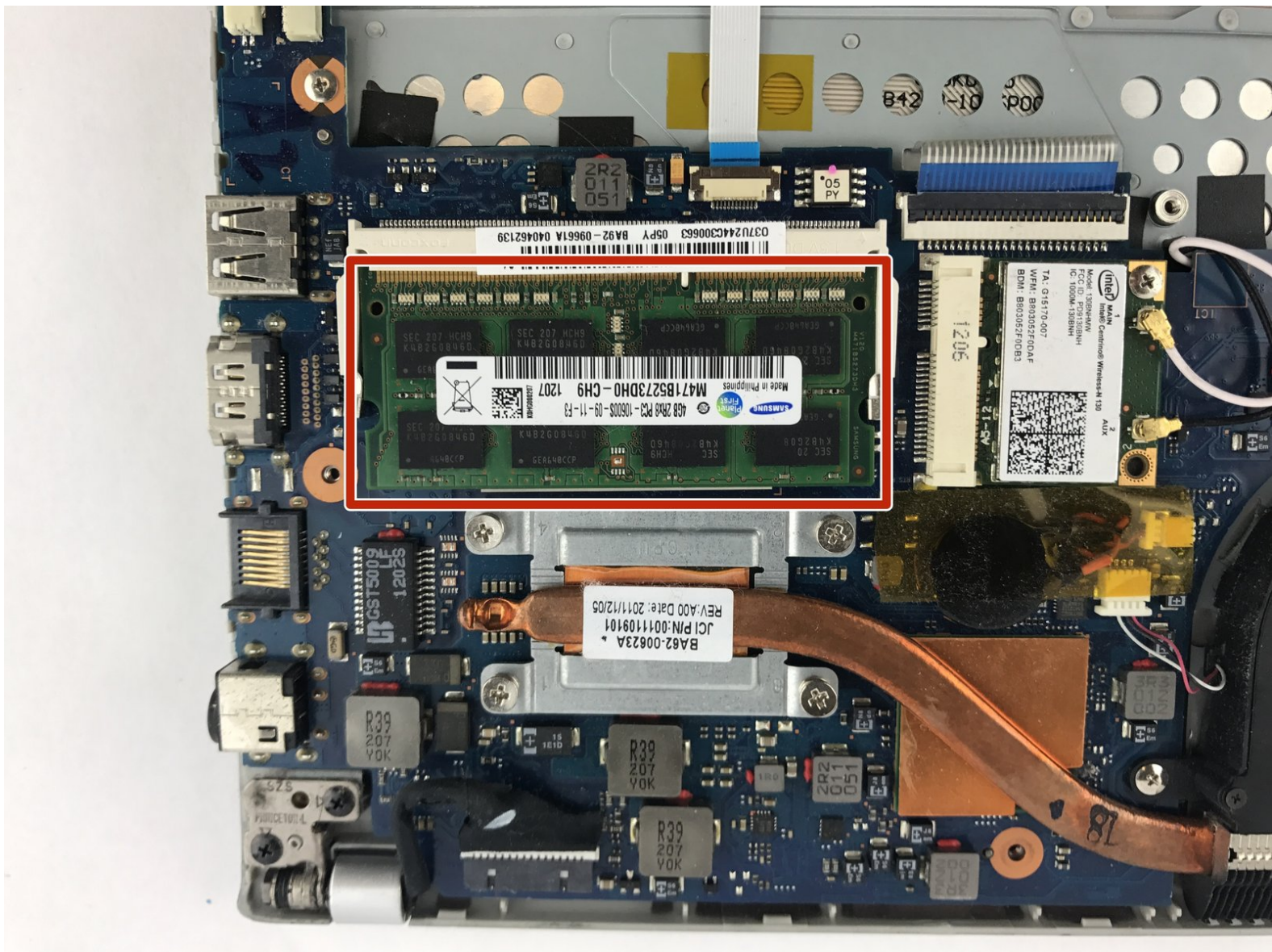




# Samsung 351U RAM Replacement

RAM replacement on the Samsung 351U.

Written By: Melvin Nelson



---

## INTRODUCTION

This guide will demonstrate how to replace the Samsung 351U Memory Card.



### TOOLS:

- [Phillips #0 Screwdriver](#) (1)
-

## Step 1 — RAM



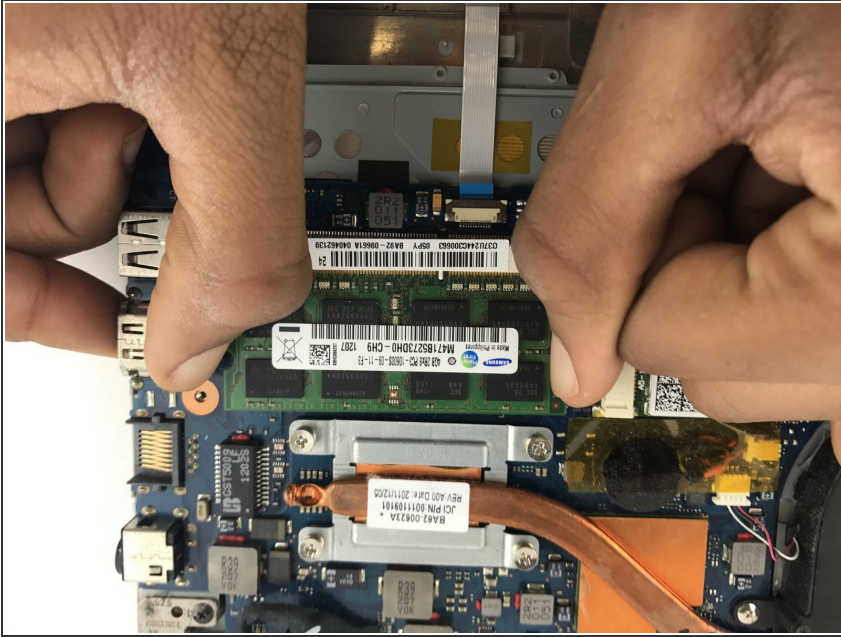
- Remove the ten 4mm screws located on the back of the laptop with a PH0 screw bit, and remove the back cover.

## Step 2



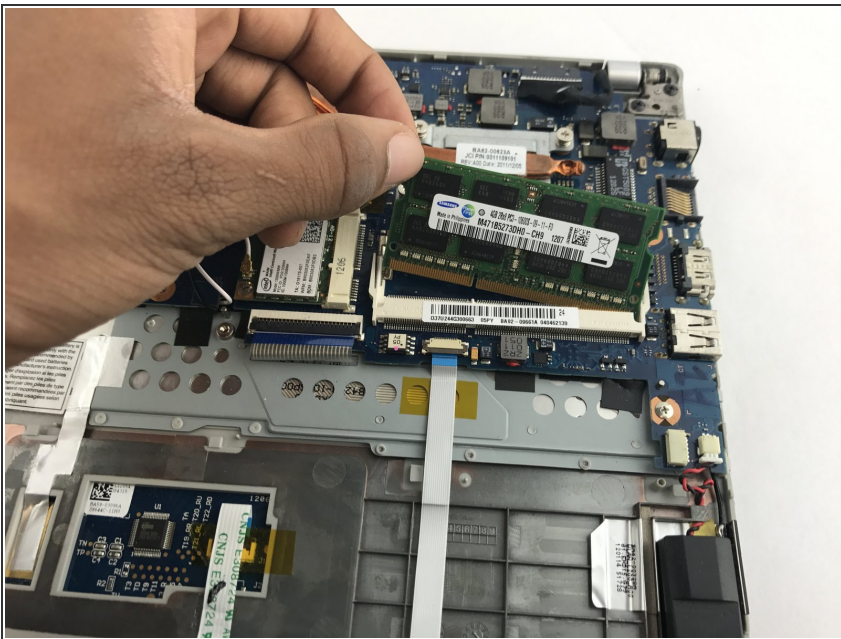
- Locate the latches on the memory card.

### Step 3



- Hold the two latches apart.

### Step 4



- Remove the memory card.

To reassemble your device, follow these instructions in reverse order.