



PowerShot G7 X Mark II Front Cover Replacement

This guide will show you how to replace the...

Written By: Brandon



INTRODUCTION

This guide will show you how to replace the Front Panel and Focus Ring of the camera if it is damaged or if the lens has gotten dirt lodged in it.

TOOLS:

Phillips #000 Screwdriver (1)

Heavy-Duty Spudger (1)

Step 1 — Top Cover Button Panel



- Use a Phillips #000 screwdriver to remove four 4mm screws from the NFC panel cover on the bottom of the camera.

Step 2



- Use a Phillips #000 screwdriver to remove five screws from under the LCD screen:
 - Three 2.4 mm screws
 - Two 3 mm screws

Step 3



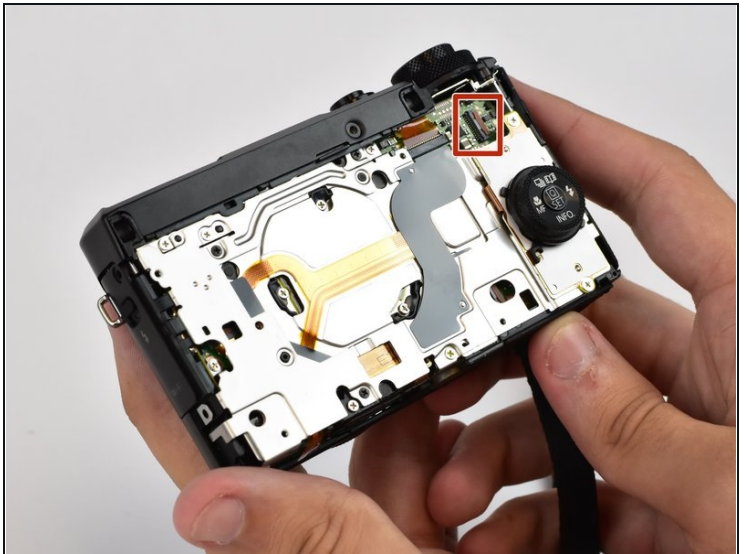
- Use a Phillips #000 screwdriver to remove one 3mm screw on the left of the camera.

Step 4



- Use a Phillips #000 screwdriver to remove one 3mm and one 4mm screw on the surface of the right face of the camera, and one under the USB/HDMI cover.

Step 5



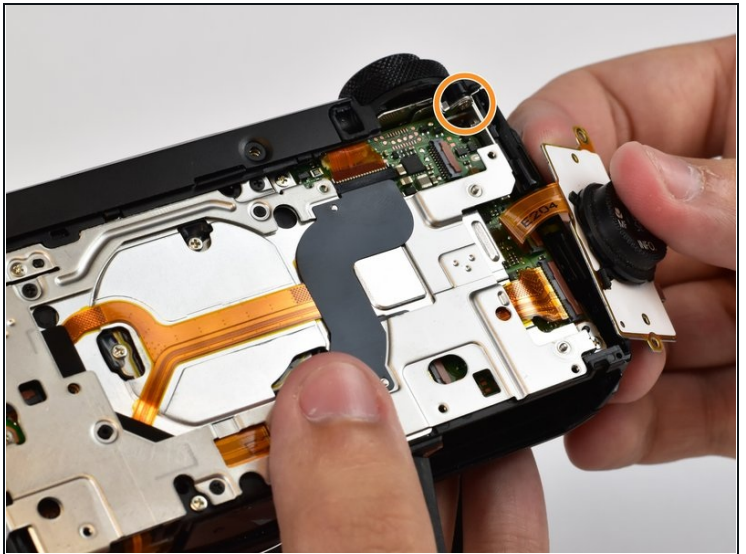
- Carefully remove the back cover off of the camera by hand, minding the ribbon cable attached to the camera body. If the cover does not detach, use a spudger to pry it off.
- Use the spudger tool to open the ZIF connector attaching the ribbon cable to the camera body.

Step 6



- Use a Phillips #000 screwdriver to remove two 3mm screws on the pop-up flash.

Step 7



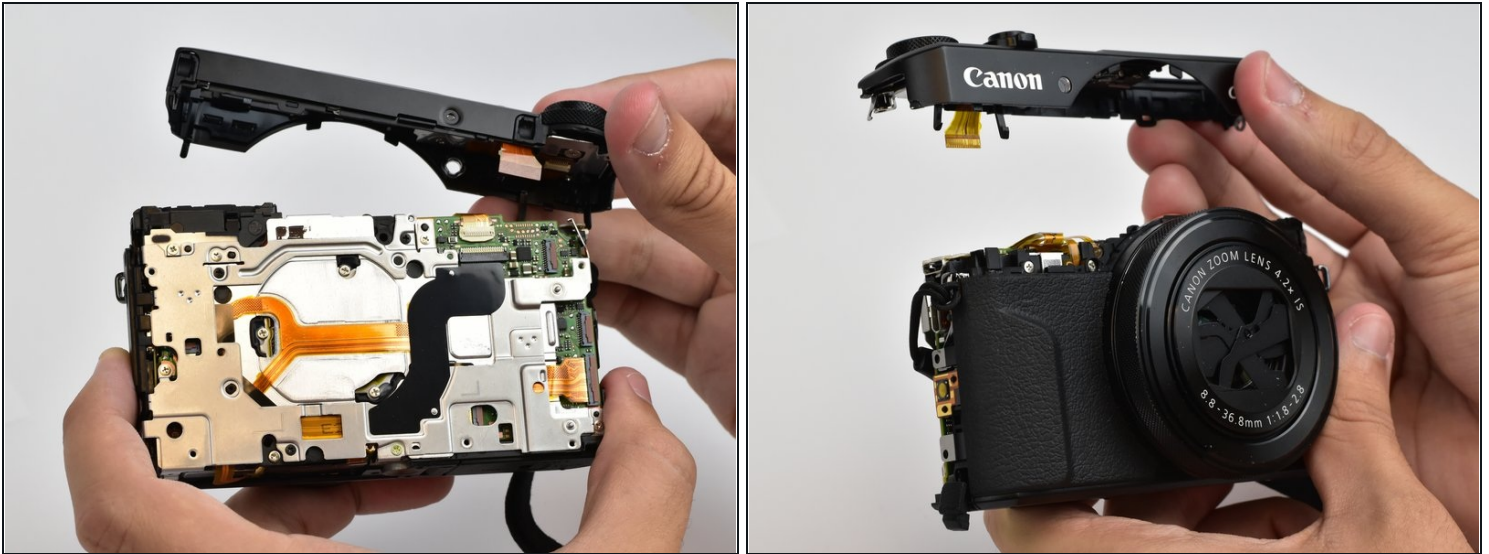
- Use a Phillips #000 screwdriver to remove two 2mm screws attaching the button panel to the camera body.
- Use a Phillips #000 screwdriver to remove a 3mm screw from beneath the mode dial.

Step 8



- Open the battery compartment and remove the battery by flipping the small latch holding it in.
- Use a Phillips #000 screwdriver to remove one 6mm screw in the bottom of the battery compartment.

Step 9



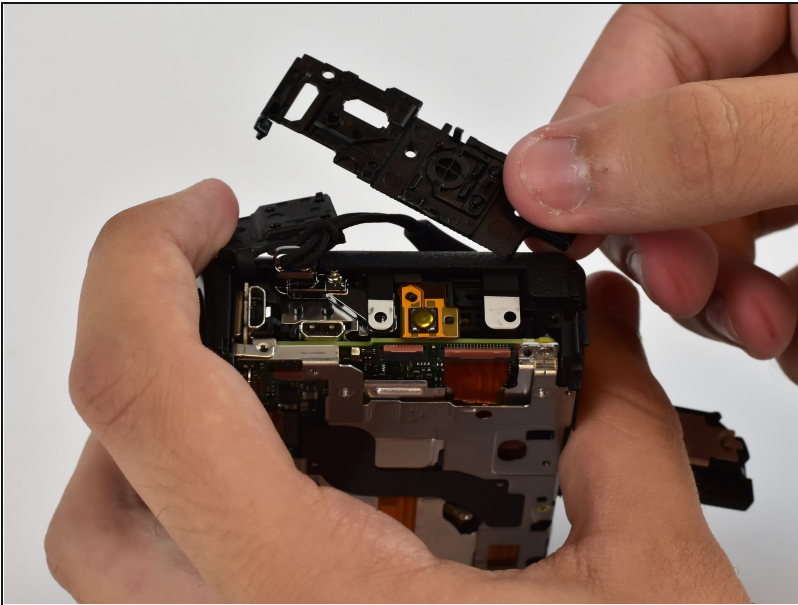
- Pry the top cover button assembly off of the camera body by detaching clips around the base of it.

Step 10 — Front Cover



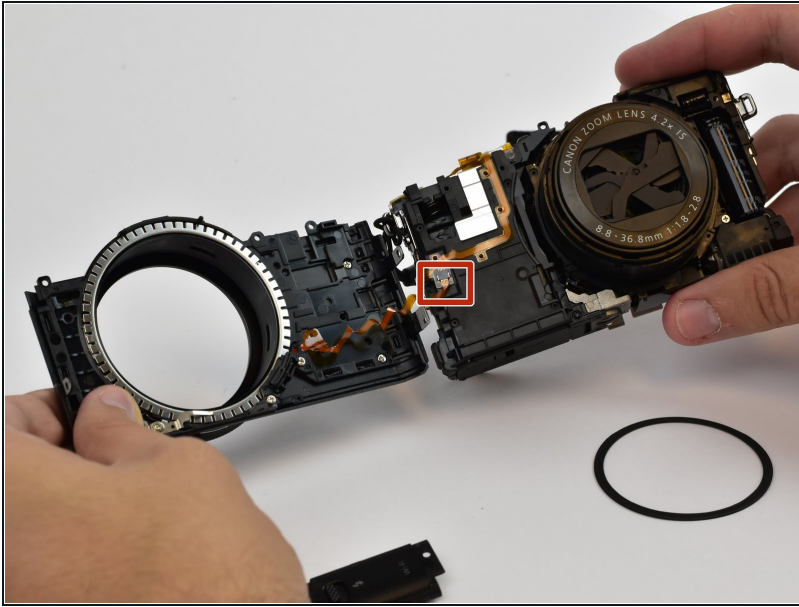
- Use a Phillips #000 screwdriver to remove two 3mm screws on the left and one 5mm screw on the right from the front panel.

Step 11



- Remove the USB/HDMI panel from the right side of the camera.

Step 12



- Separate the front cover and focus ring assembly from the front of the camera. Use a plastic spudger to detach the ZIF connector holding the ribbon cable connected to the focus assembly.

To reassemble your device, follow these instructions in reverse order.