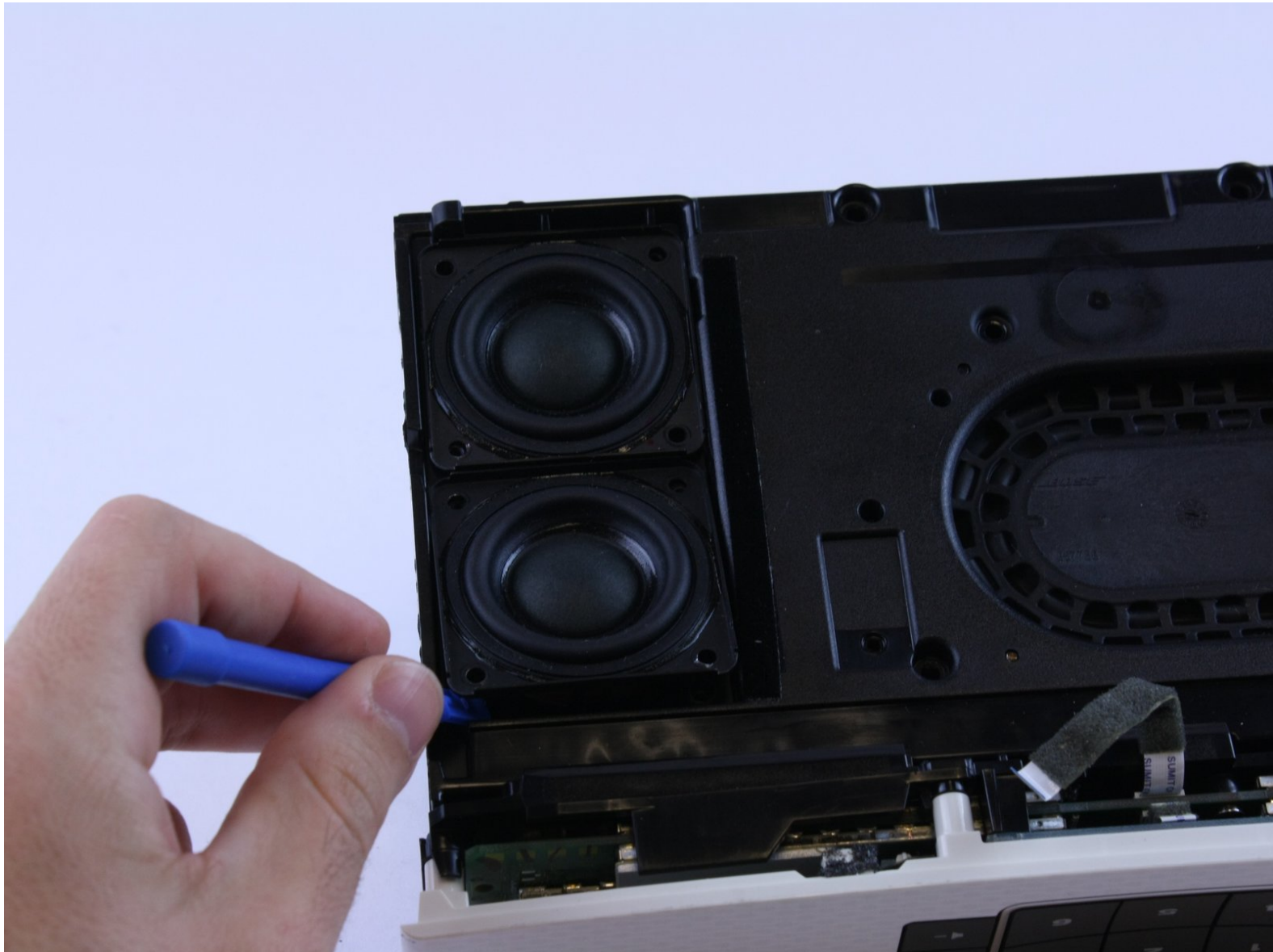




Bose SoundTouch Portable Speaker Replacement

Replace speakers for your Bose SoundTouch Portable.

Written By: Chelsea Martin



INTRODUCTION

This tutorial requires removal of the front grille and back cover to access the speakers.



TOOLS:

- [T10 Torx Screwdriver](#) (1)
 - [iFixit Opening Tools](#) (1)
 - [Small Needle Nose Pliers](#) (1)
-

Step 1 — Speaker Battery



- Remove the two T-10 machine screws at the bottom of the device.

Step 2



- Turn the device around.
- From the top, lightly push down the back cover to release it.
- Lift the bottom of the cover and pull it up.

Step 3



- Remove the two T-10 machine screws, then pull the battery straight out.

Step 4 — Grille



- Remove the two screws holding the speaker grille in place.

Step 5



- Grip the sides of the device and push the speaker grille down and out.

Step 6



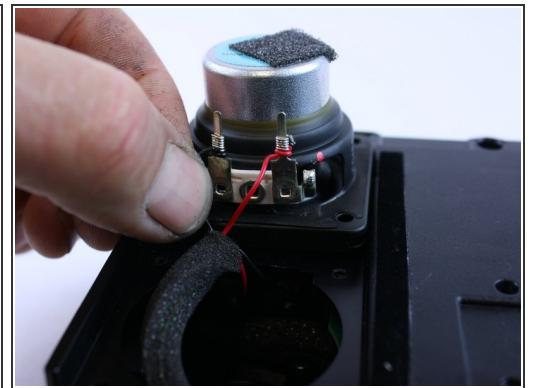
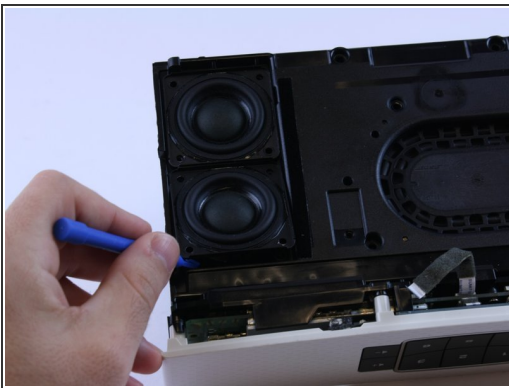
- Gently release the ribbon from its connector and remove the grille.

Step 7 — Speakers



- There are four T-10 Torx screws for each speaker; remove all four screws for each speaker you are replacing.

Step 8



- Using a plastic pry tool, carefully pry the speaker up.
- With the bottom of the speaker exposed, unwind the wires from the connection tabs and replace the speaker.

To reassemble your device, follow these instructions in reverse order.