



Samsung Level Box Mini Battery Replacement

Battery replacement for the Samsung Level Box Mini.

Written By: dylan weiss



INTRODUCTION

If the Samsung Level Box Mini is not charging, not turning on, or if the battery is losing power rapidly, then the batteries may require replacement.



TOOLS:

- [Tweezers](#) (1)
- [iFixit Opening Tools](#) (1)
- [JIS Driver Set](#) (1)



PARTS:

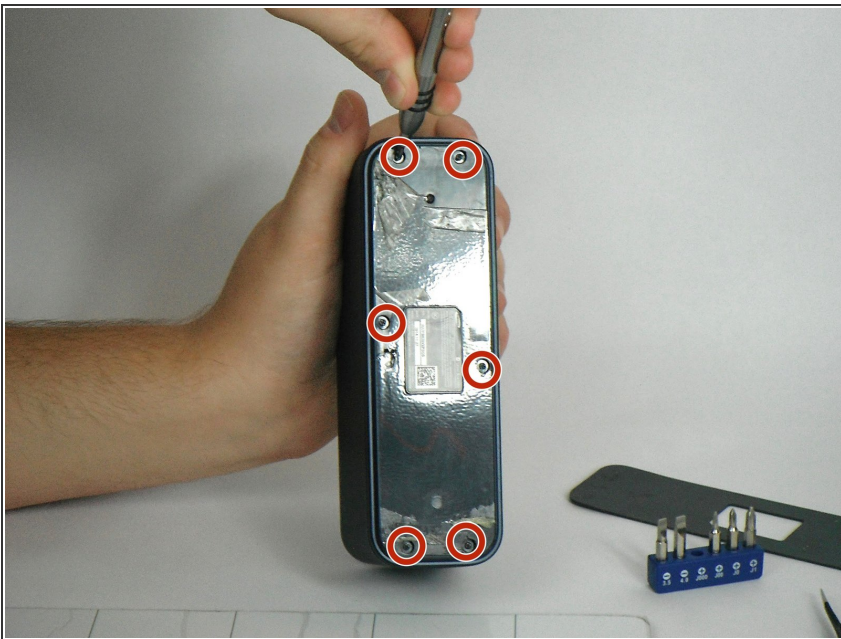
- [Samsung 3.7V Lithium Ion Batteries](#) (1)

Step 1 — Battery



- Using a plastic opening tool, go around the edges of the rubber bottom. Insert the same tool under the edge of the rubber and swivel side to side. Continue moving it forward while peeling the plastic off with the precision tweezers.

Step 2



- Remove the six 4.5 mm Philips #1 screws from the bottom plate using the Screwdriver J00. Take off the bottom plate.

Step 3



- Using the plastic opening tool, remove the batteries from the device.

To reassemble your device, follow all the instructions in the reverse order. Use adhesive to stick the rubber back onto the bottom of the device.