



# LG Optimus T Motherboard Replacement

This guide will show step by step instructions how to replace the motherboard on your LG Optimus T.

Written By: stacey



## INTRODUCTION

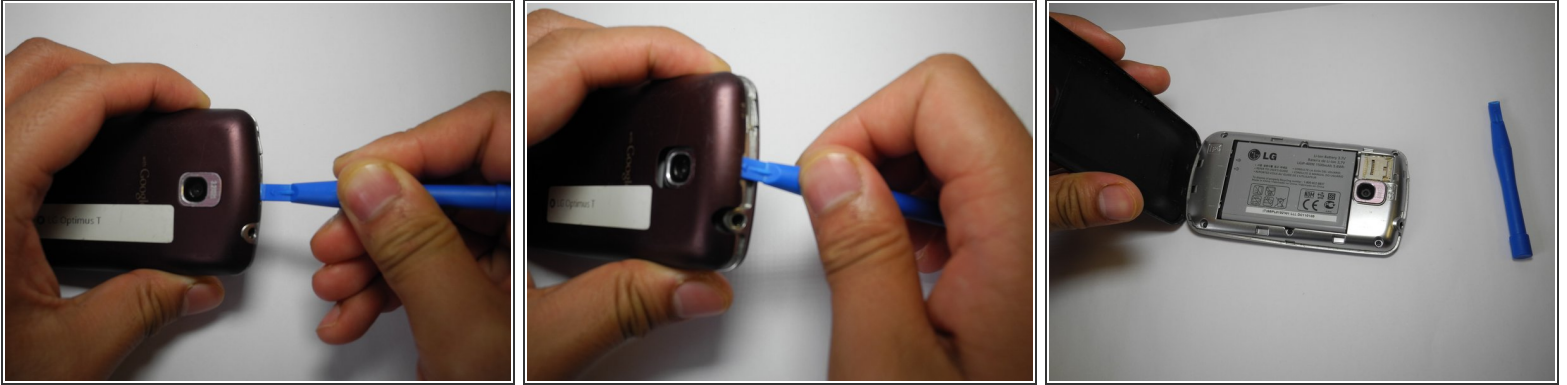
If your LG Optimus T will not turn on, or the battery will not charge replacing the motherboard may solve these issues.


---

### TOOLS:

- [iFixit Opening Tools](#) (1)
  - [Metal Spudger](#) (1)
  - [JIS Driver Set](#) (1)
-

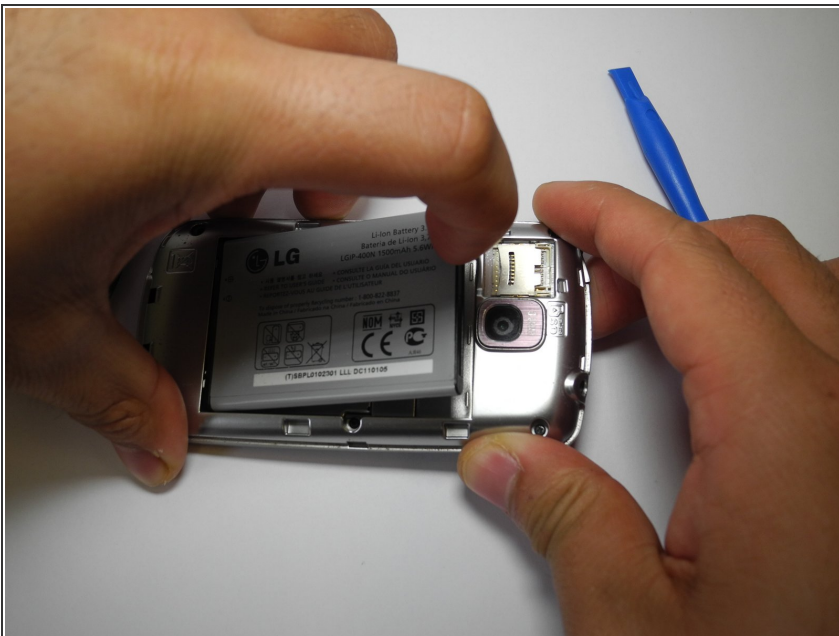
## Step 1 — Motherboard



 Working on your device while it is turned on may result in electric shock. Make sure to shut down and unplug your device before you begin.

- Using a prying device, such as a plastic opening tool, remove the phone's back cover. At the top of the phone, there's an indentation to put the Spudger into to pop the case off

## Step 2



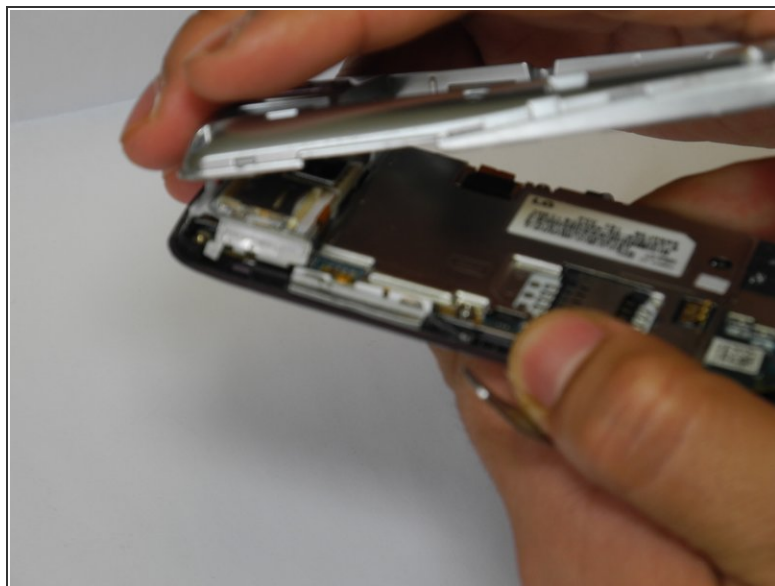
- Remove the battery. There's an indentation to the left of the camera lens to pull up on the battery with your finger

## Step 3



- Use a J0 screwdriver to remove the six 4.5mm screws.

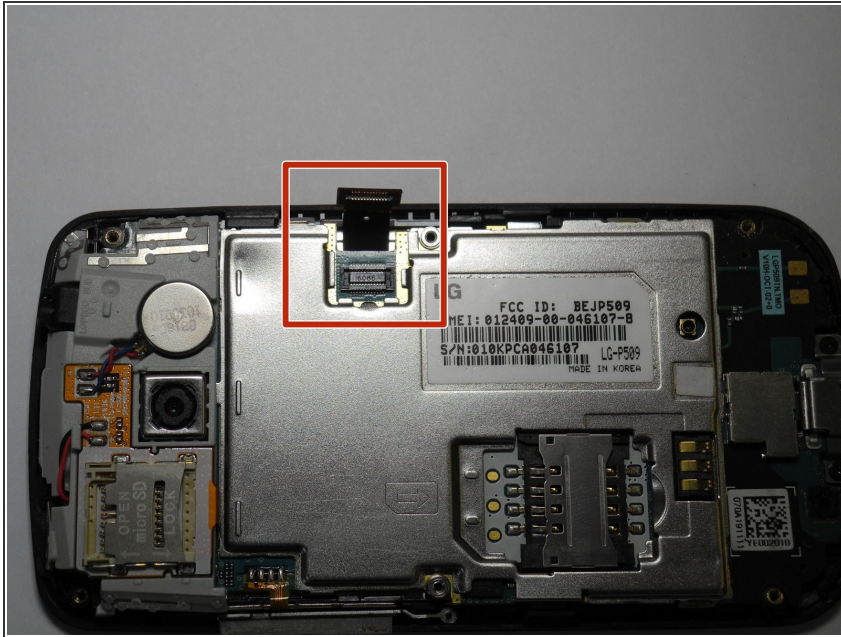
## Step 4



- ① You might have difficulty popping the interior case off. You may use the metal spudger here with caution if the plastic opening tool fails
- Remove interior case. Insert the spudger into the indentations at the top, or bottom of the phone to pry off the interior case.

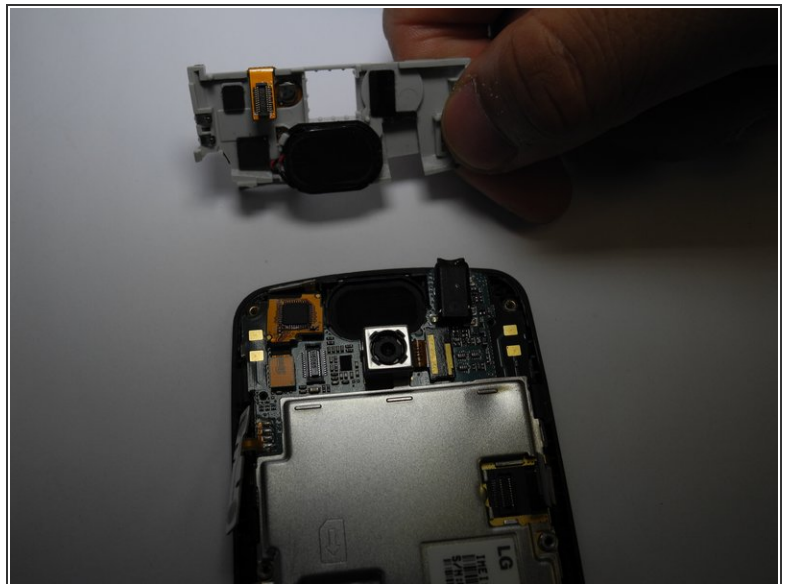
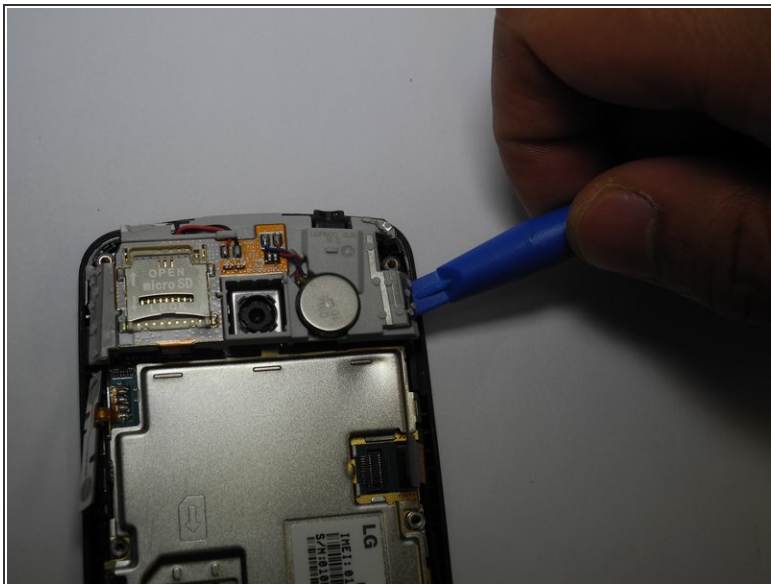


## Step 5



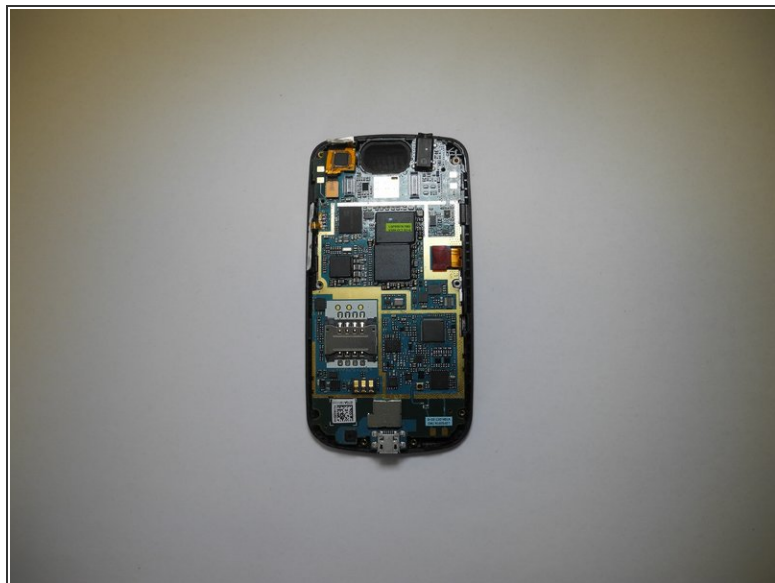
- Pull up on connector tab

## Step 6



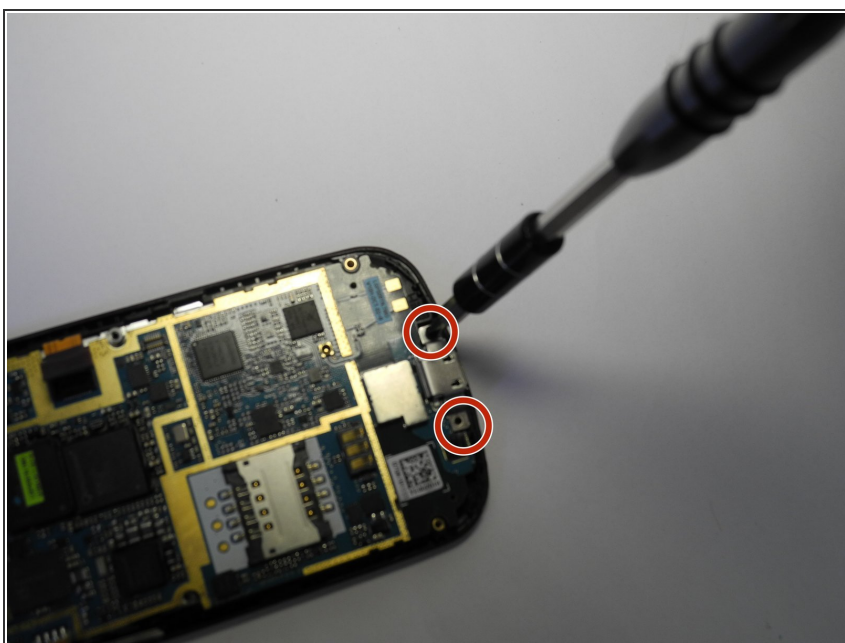
- Remove SD card mount. Insert the plastic opening tool on the right side to pop off

## Step 7



- Remove metal panel
- There are four retaining points to insert plastic opening tool and pop off panel

## Step 8



- Use a J0 screwdriver to remove the two 1.8mm screws from charging port. (Charging port and motherboard are connected.)
- Remove motherboard

To reassemble your device, follow these instructions in reverse order.