



Toshiba Portege R835-P88 Optical Drive Replacement

I will demonstrate how to replace the Optical Drive.

Written By: Colt Cates



INTRODUCTION

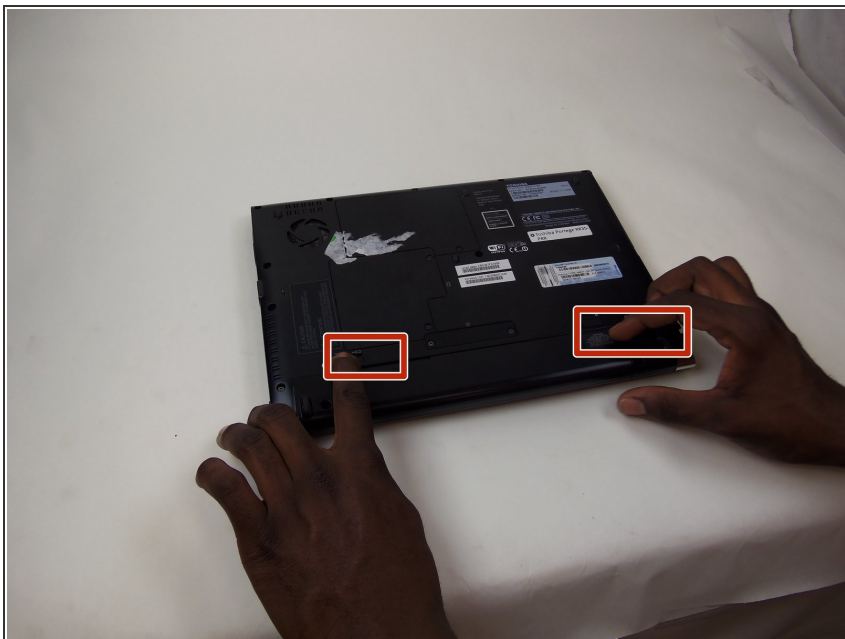
This guide will show how to correctly replace the Optical Drive.



TOOLS:

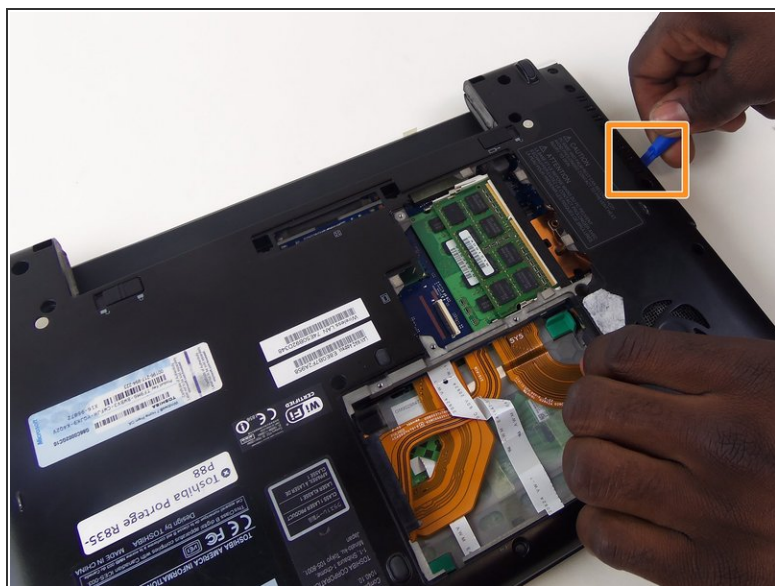
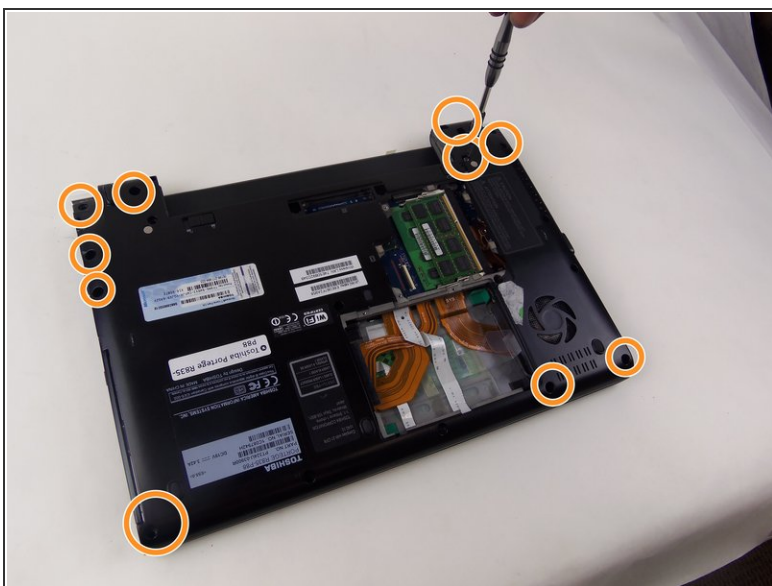
- [Phillips #0 Screwdriver](#) (1)
 - [Spudger](#) (1)
-

Step 1 — Optical Drive



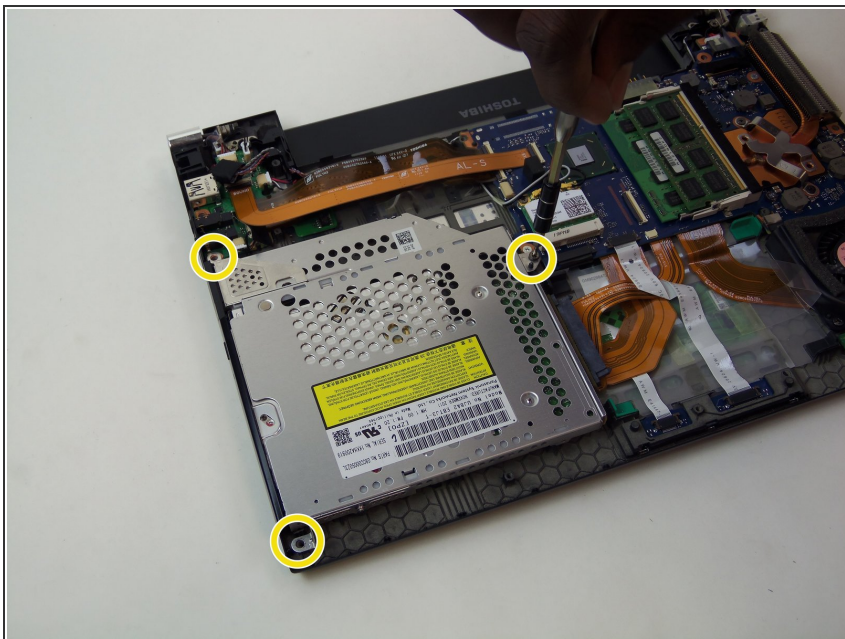
- Start by removing the battery.

Step 2



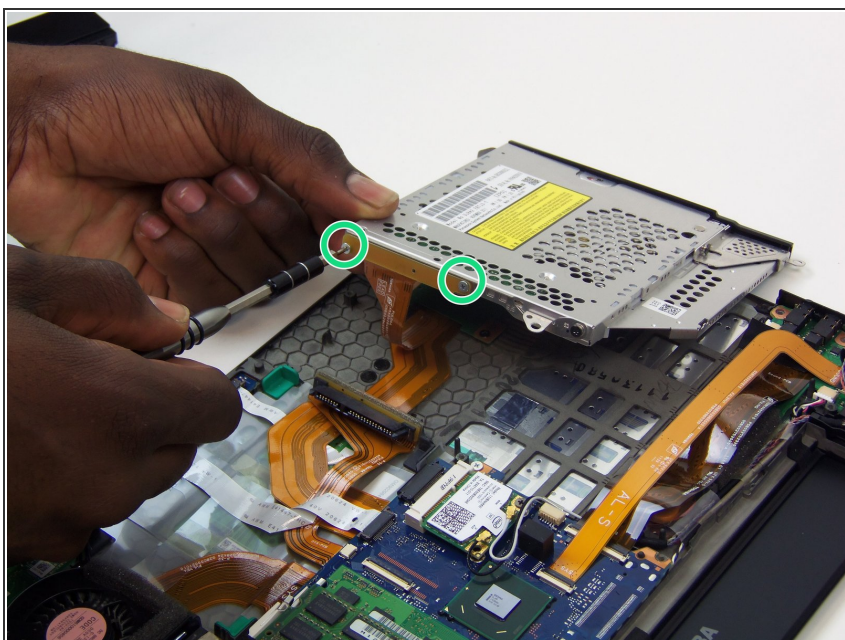
- Start by removing the back cover by removing the screws, revealing the Optical Drive. Remove the 1 cm screws to remove. Then use the spudger to pry the back off.

Step 3



- After the cover is removed, remove the screws that hold the Drive. It has 3, 1 cm screws holding it down.

Step 4



- Take the 2, .5 cm screws out of the drive line. Once this is complete, you have successfully taken out the Optical Drive.

To reassemble your device, follow these instructions in reverse order.