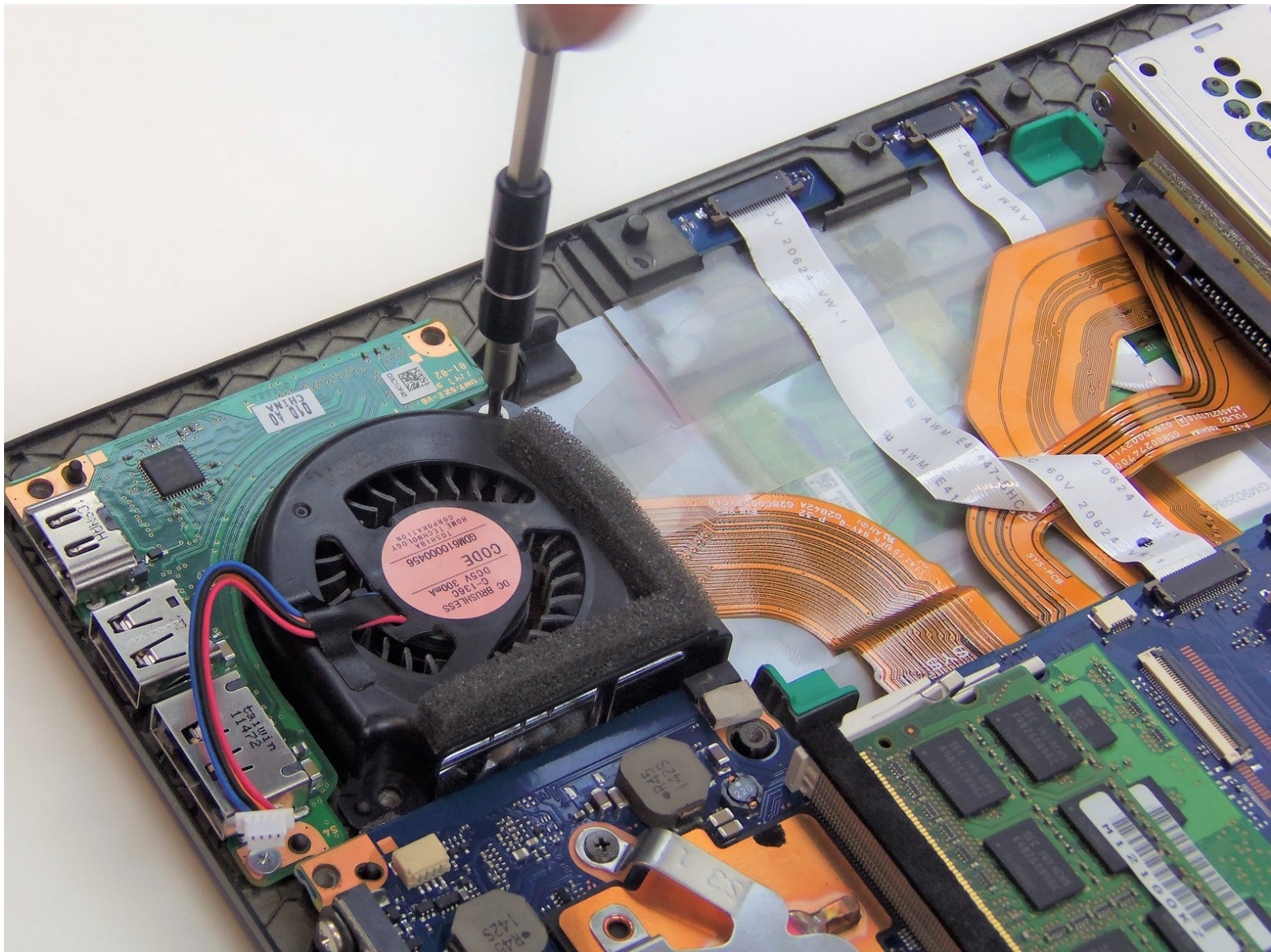




Toshiba Portege R835-P88 Cooling Fan Replacement

Stop overheating issues by replacing the cooling fan in your Toshiba Portege R835-P88.

Written By: Kimberly Fowler



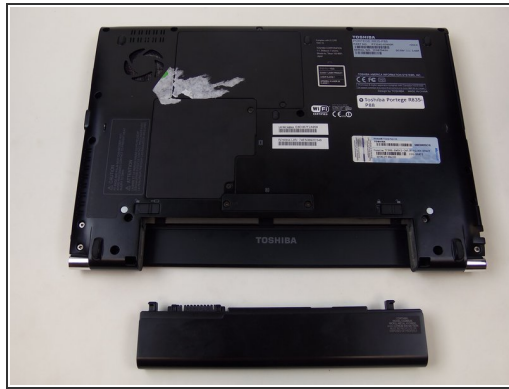
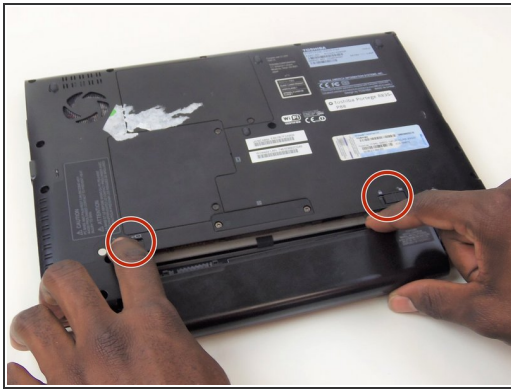
INTRODUCTION

Is your computer overheating? Your cooling fan may need to be replaced. This guide will show you the steps for replacing the cooling fan in your Toshiba Portege R835-P88.

TOOLS:

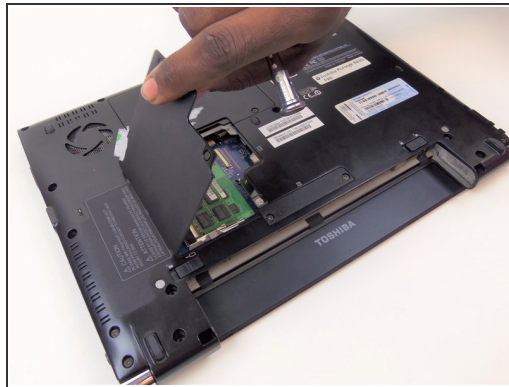
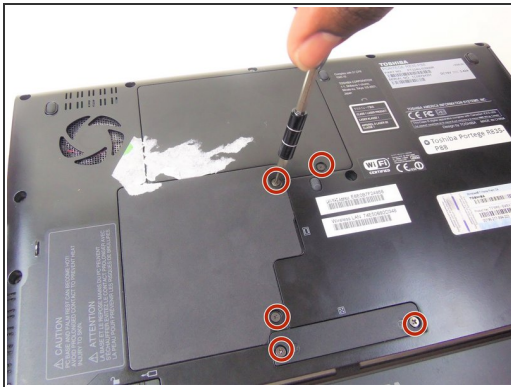
- [Phillips #00 Screwdriver](#) (1)
 - [JIS Driver Set](#) (1)
 - [Spudger](#) (1)
 - [iFixit Opening Tools](#) (1)
-

Step 1 — Cooling Fan



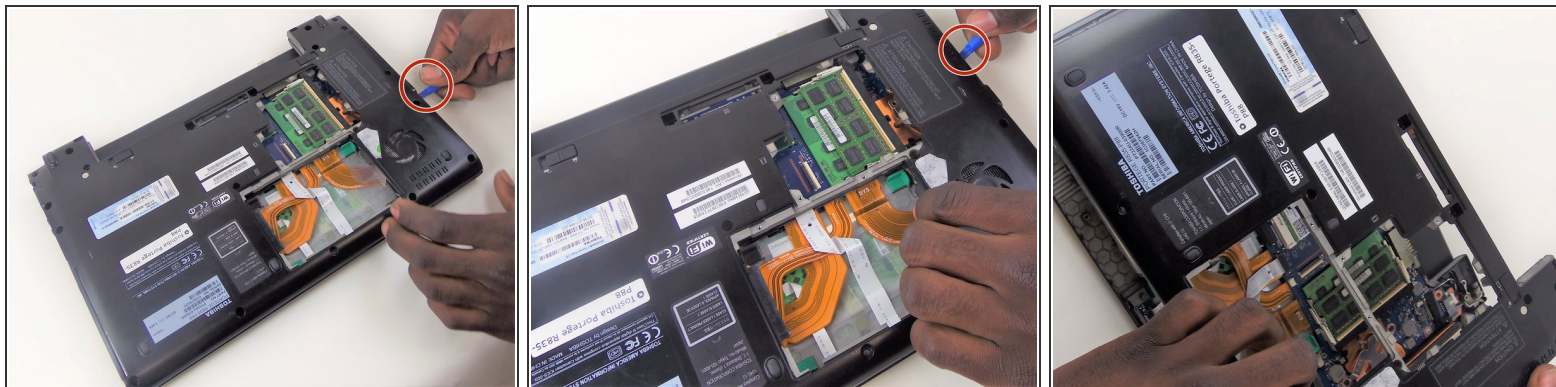
- Shut down the computer and unplug.
- Unlock and remove battery.

Step 2



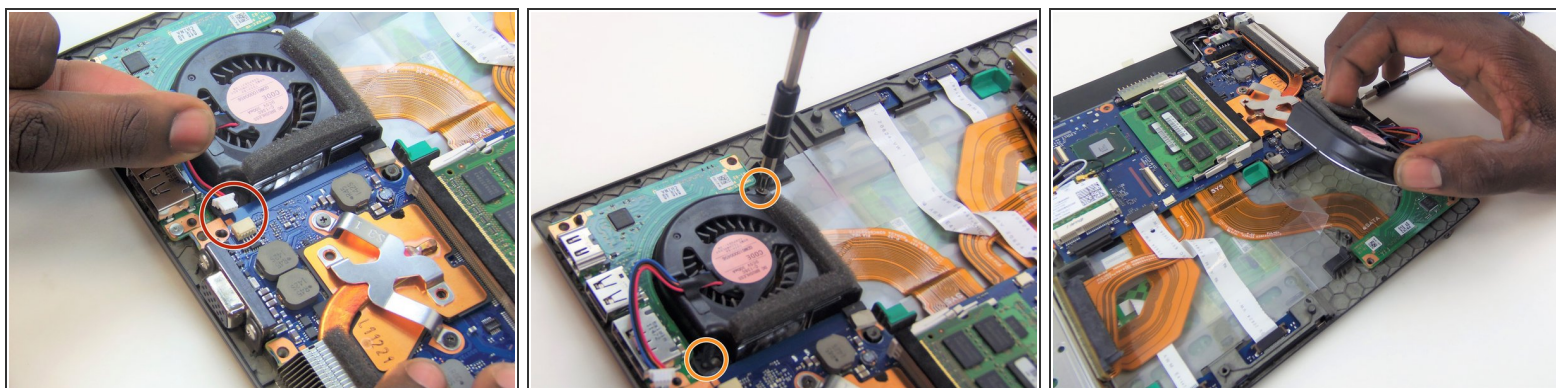
- Remove the three small covers from the bottom by removing two 11mm screws and three 5mm screws using a screwdriver #J000.
- Remove the remaining screws from the bottom cover using phillips head screwdriver #PH00.

Step 3



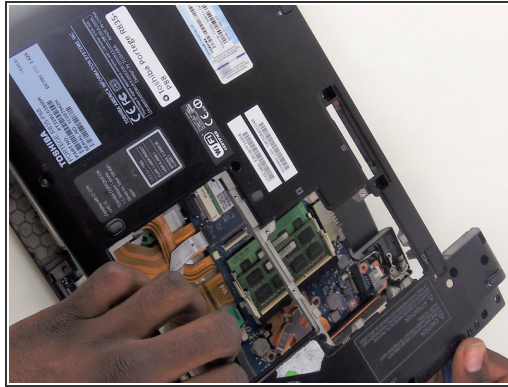
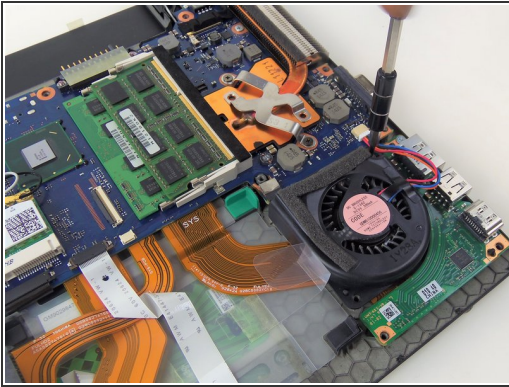
- Pry the bottom cover using blue plastic ifixit prying tool.
- Lift up and remove cover.

Step 4



- Disconnect the fan cable from the motherboard.
- Remove two 3mm screws from fan using #J000 phillips head screwdriver.
- Lift up and remove fan.

Step 5



- Replace the fan.
- Assemble the Toshiba Portege R835-P88 following all disassembly steps in the reverse direction.

To reassemble your device, follow these instructions in reverse order.