



Toshiba Portege R835-P88 Screen Replacement

This guide will show you how to replace a broken screen.

Written By: Madison Crawford



INTRODUCTION

This guide will show you how to correctly replace a Toshiba Portege R-835 P88 screen.

TOOLS:

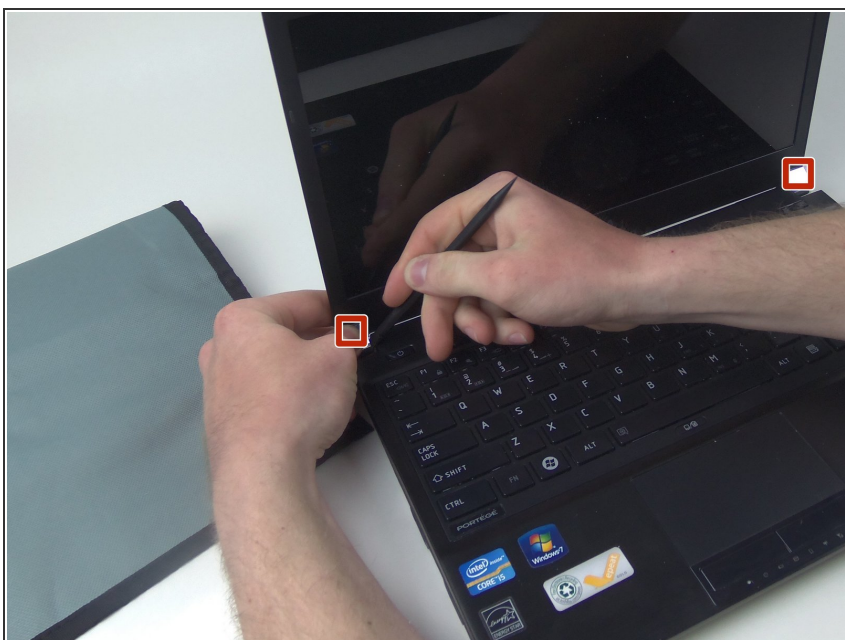
- [Phillips #000 Screwdriver](#) (1)
 - [Metal Spudger](#) (1)
 - [Spudger](#) (1)
-

Step 1 — Screen



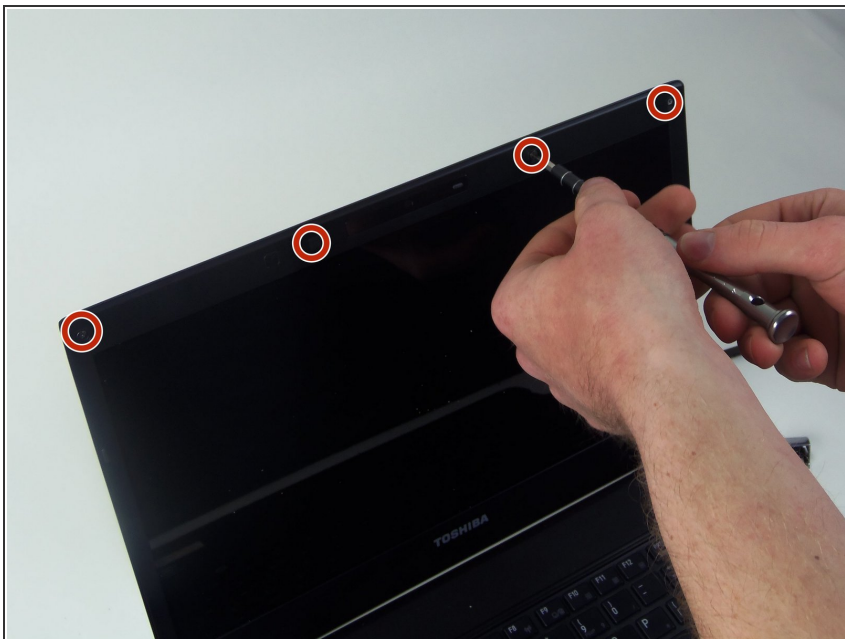
- Remove the battery by pressing the two buttons inward and pulling the battery out.

Step 2



- Remove the end caps located on the left and right corners below the screen.

Step 3



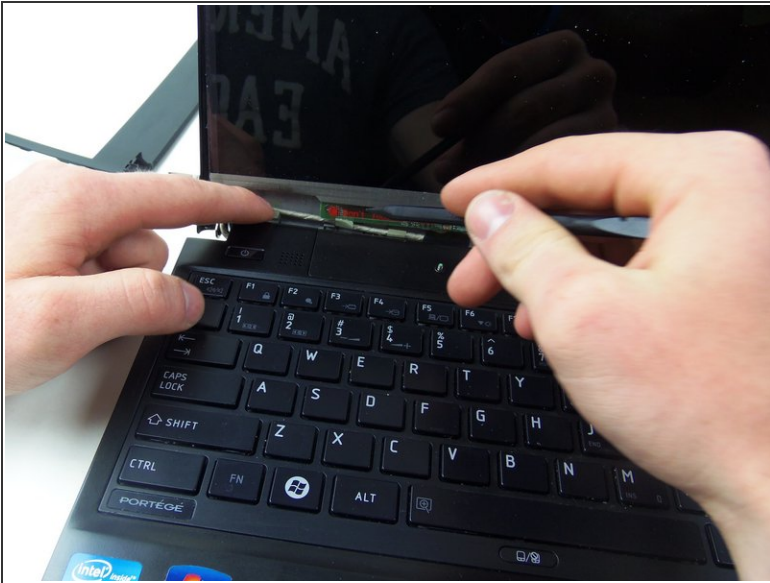
- Remove the square rubber caps on top of the screws
- Remove the 4 mm screws at the top
- remove the two 6 mm screws that were under the chrome caps at the bottom.

Step 4



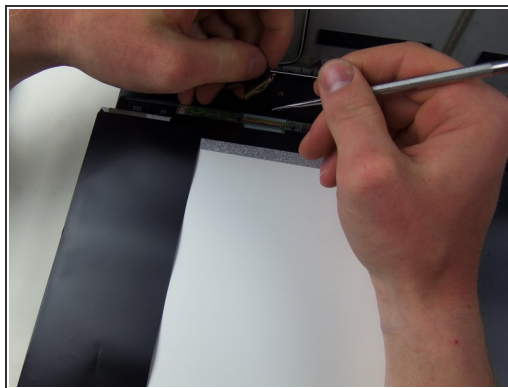
- Remove the plastic bezel by lightly prying on it. It will pop when it starts to come loose.

Step 5



- Remove tape from around cord attached to the bottom of the screen.
- Place the screen on top of the keyboard

Step 6



- Remove the cord from the screen by cutting the tape where the two fittings meet. After that pull them apart.

To reassemble your device, follow these instructions in reverse order.