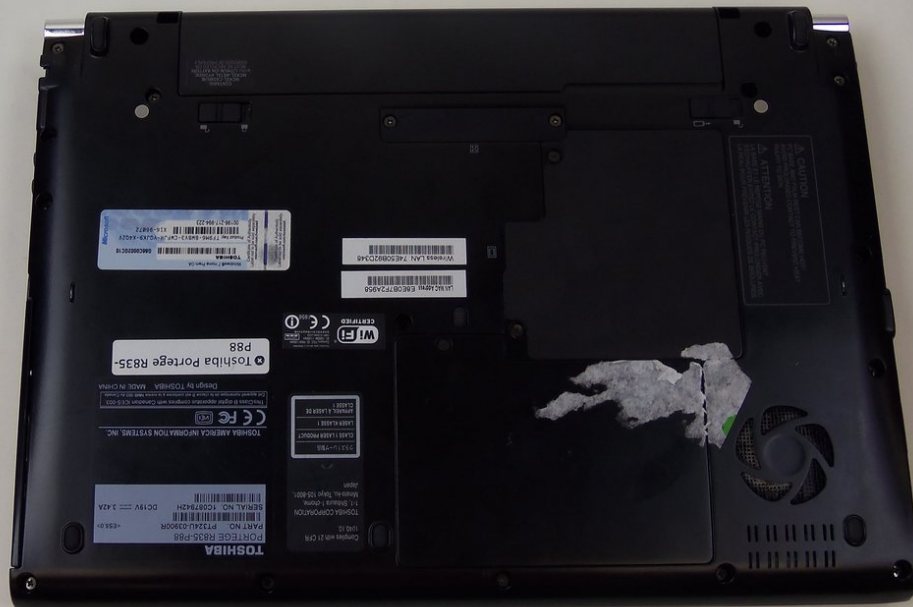




Written By: Colby



INTRODUCTION

Use this guide to replace the RAM in your Toshiba Portege R835-P88.



TOOLS:

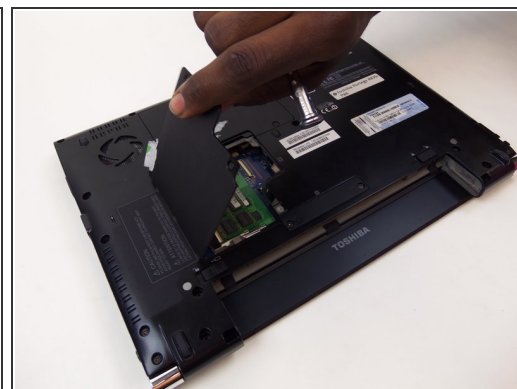
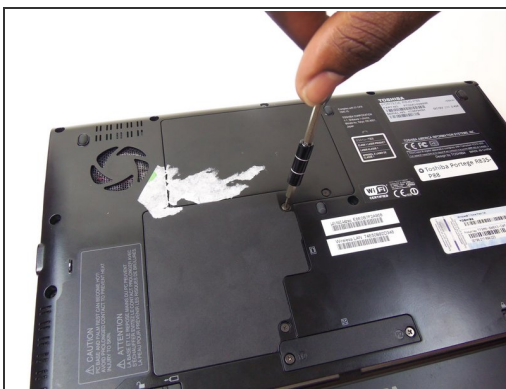
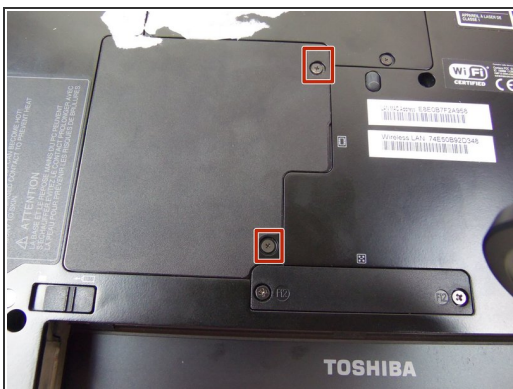
- [Small Phillips Head Screwdriver](#) (1)
-

Step 1 — RAM



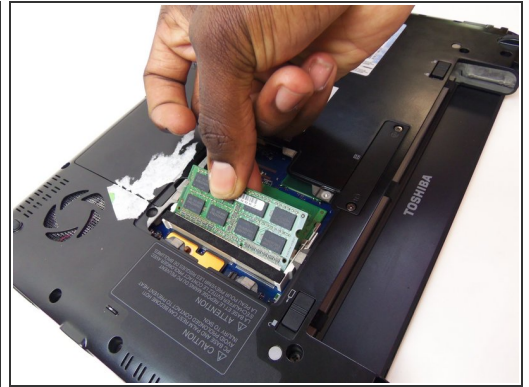
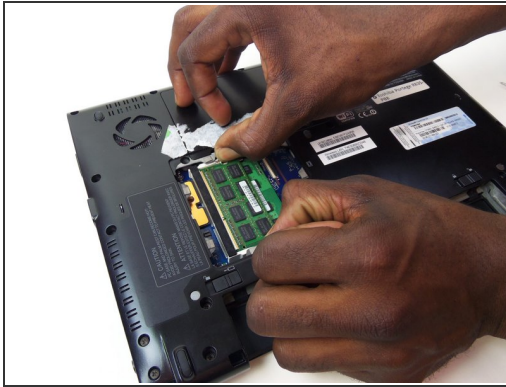
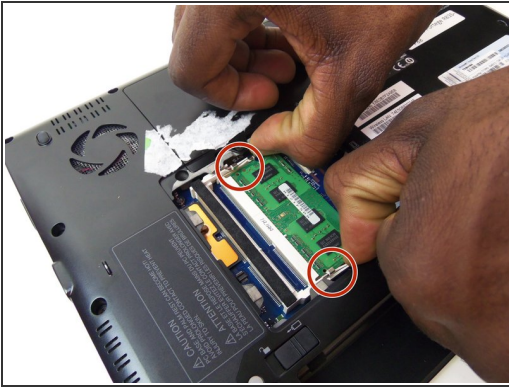
- Remove the battery by sliding the interlocks to the unlock position.

Step 2



- Remove the two 6mm screws from the RAM cover. Lift the RAM cover upward to remove.

Step 3



- Push back the little white plastic clips to extract the RAM.

To reassemble your device, follow these instructions in reverse order.