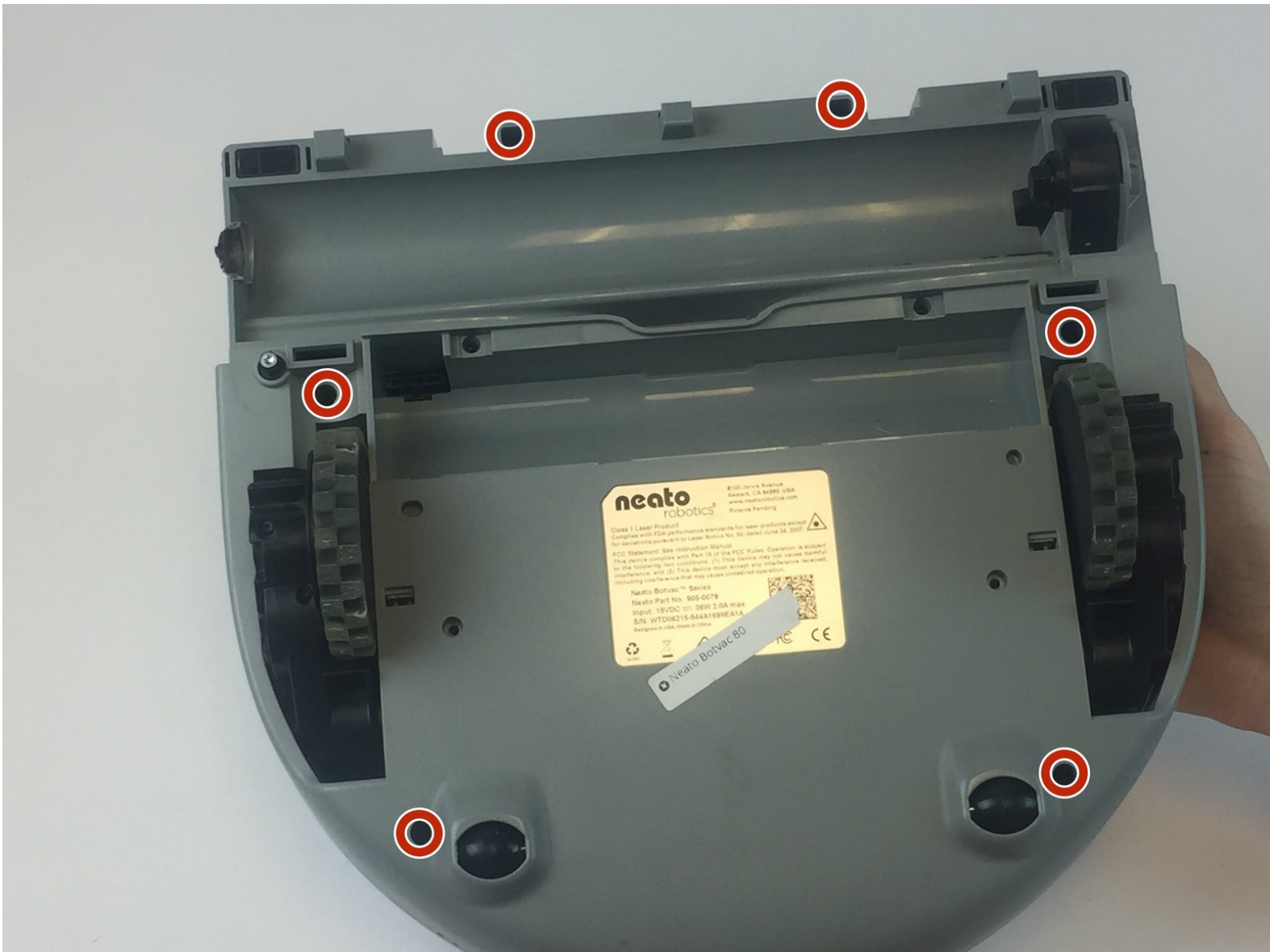




# Neato Botvac 80 Top Face Panel Replacement

A prerequisite only guide used to remove the top face panel of the robot.

Written By: Brandon Blank





## TOOLS:

- [T10 Torx Screwdriver](#) (1)
-

## Step 1 — Rear Bumper



- Grab the rear bumper with both hands on either side.

## Step 2



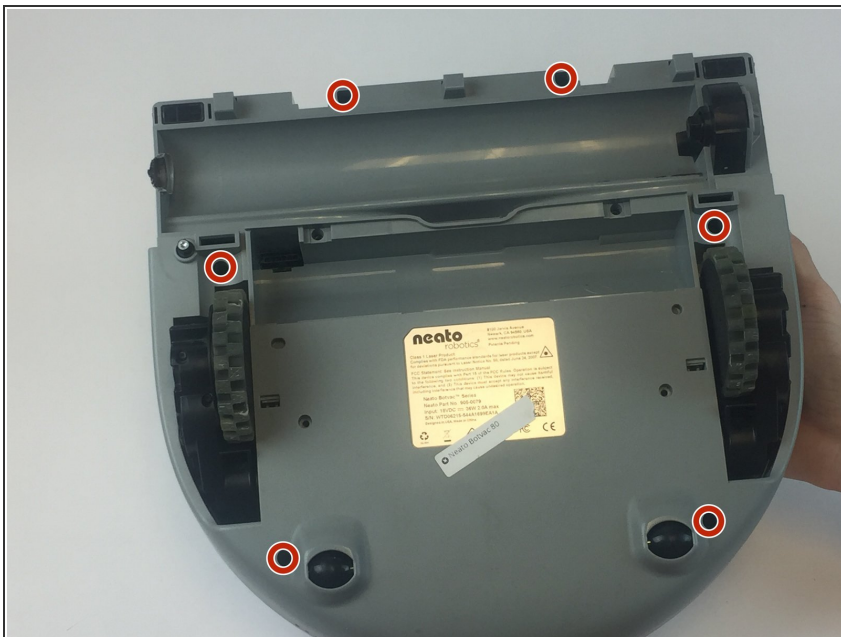
- Pull the left and right sides away from the machine to unclip the bumper. This requires that you bend the plastic a little bit. Unclip one side a little bit and allow the prong to rest on the side of the machine. Then unclip the other side and pull off the bumper parallel to both sides

### Step 3 — Top Face Panel



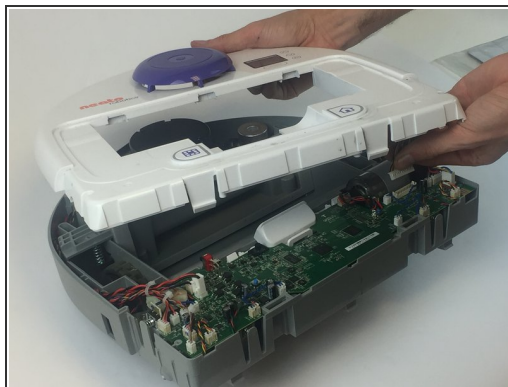
- Looking from above, remove the two 11mm screws with a torx T10 screwdriver.

### Step 4




- Begin by placing the robot on it's back and removing the six 11m screws using a Torx T10 screwdriver.

## Step 5



- To remove the top, you must press in both of the clamps at the same time and push upwards.

 When removing the top, before you can completely take it off you must unplug the LCD power cable from the motherboard.

To reassemble your device, follow these instructions in reverse order.