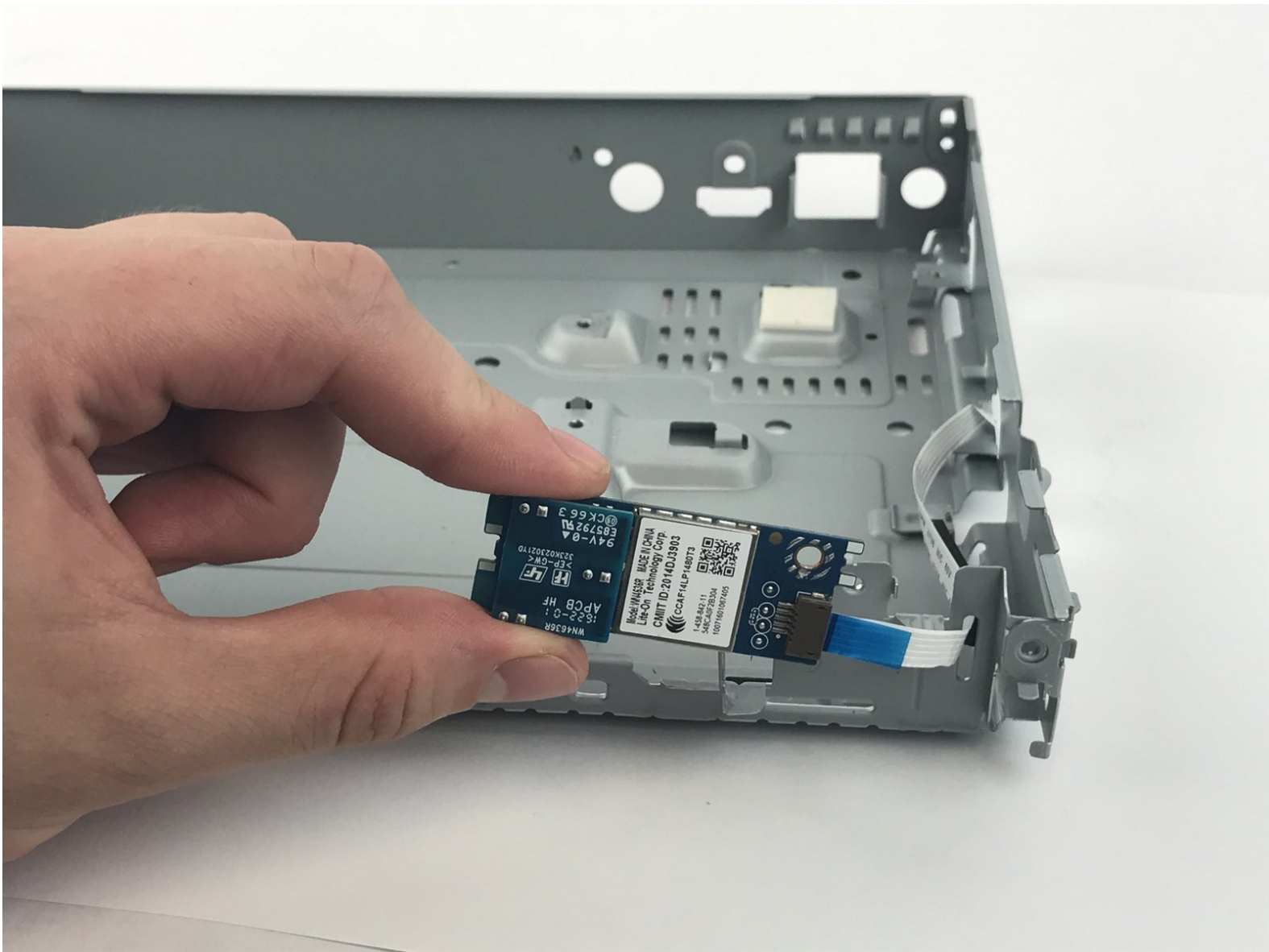




Sony BDP-S3700 Wi-Fi Module Replacement

The Wi-Fi module connects the Sony BDP-S3700 to Wi-Fi signals and to the internet. This guide shows how to replace it.

Written By: Luiz Barreto



INTRODUCTION

The Wi-Fi module connects the Sony BDP-S3700 to Wi-Fi signals and to the internet. This guide shows how to replace it.



TOOLS:

- [Phillips #1 Screwdriver](#) (1)
-

Step 1 — Front Panel



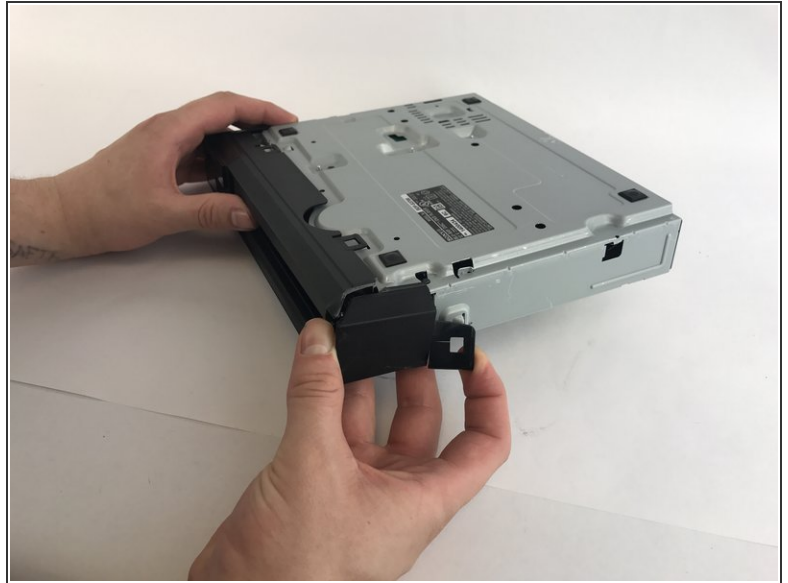
- Use the PH1 screwdriver to remove the two 9mm screws on the back of the Blu-ray player.

Step 2



- Remove the back of the device by slowly sliding the rear outer housing backwards.

Step 3



- Turn the Blu-ray over
- Pry open the clips under and on the sides

Step 4



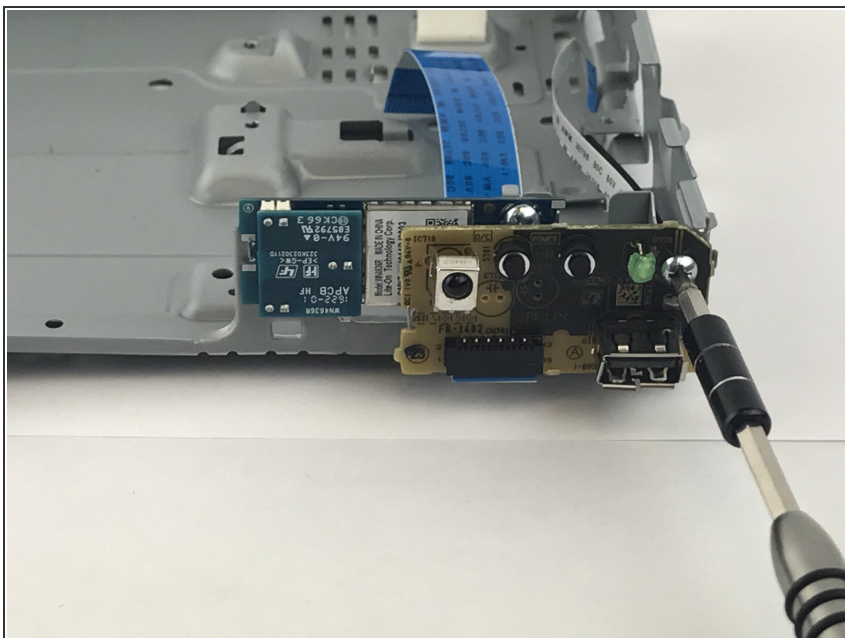
- Once all the clips are open, slide the front outer housing out.

Step 5 — Port Board



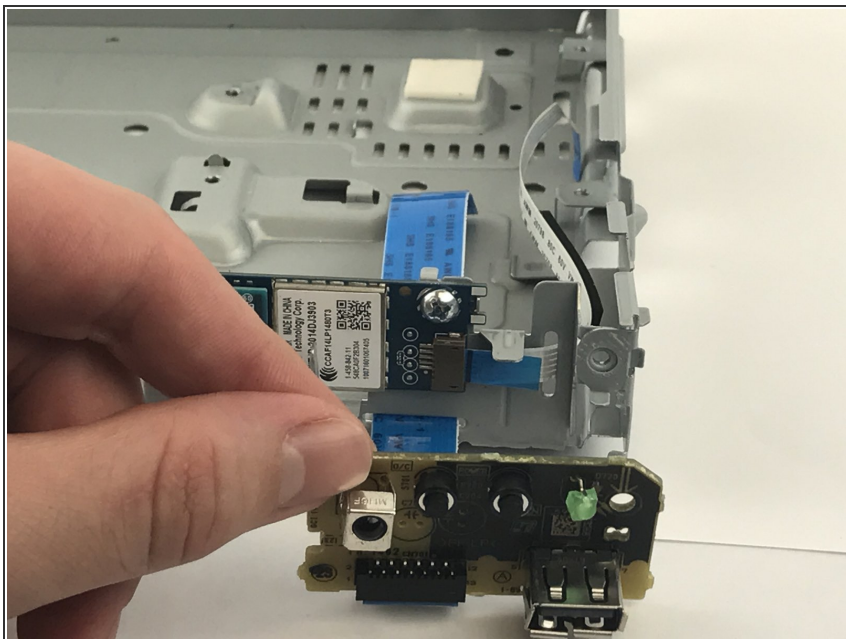
- Flip the Blu-ray back up
- Remove the ribbon connecting the port board to the motherboard.
- ⚠ Handle the circuits only on its side.

Step 6



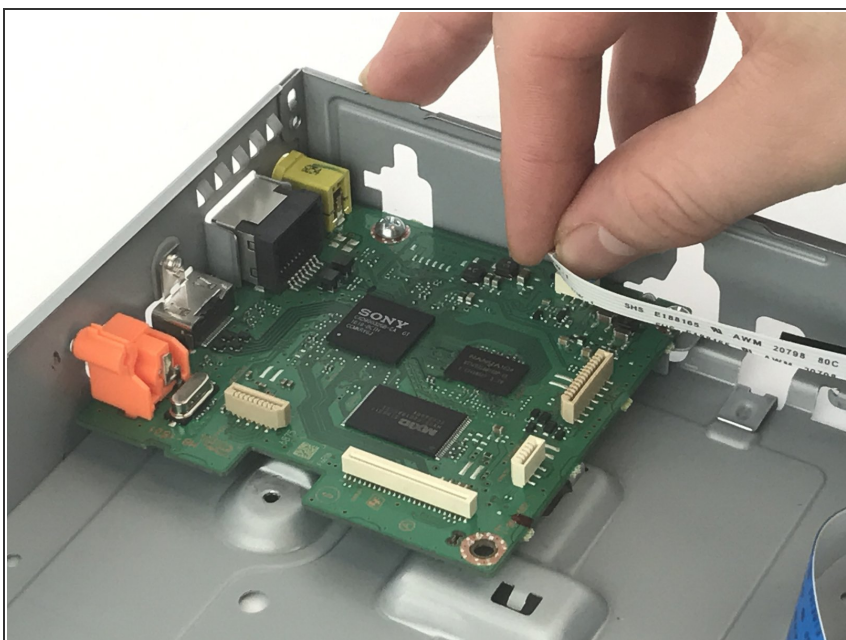
- Use the PH1 to remove the 7mm screw on the port board.

Step 7



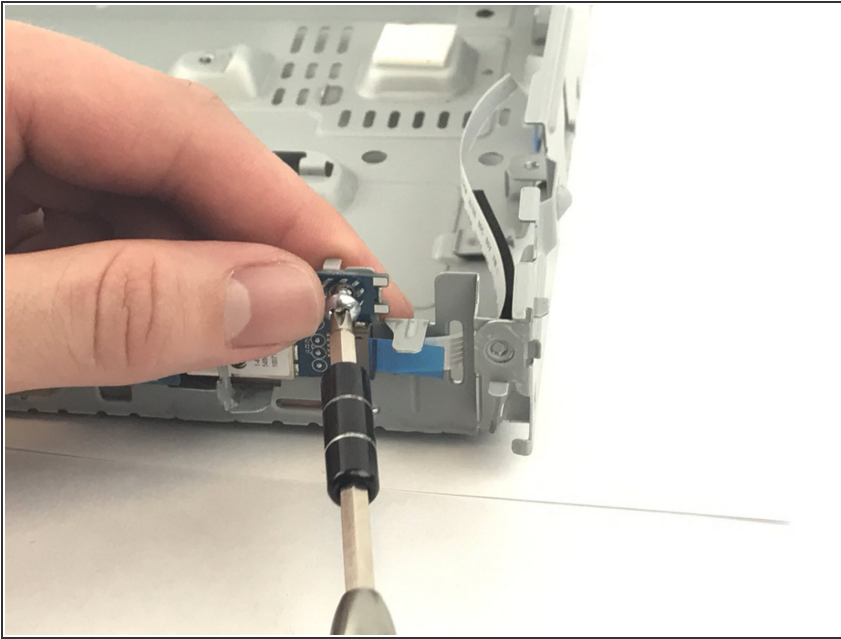
- Remove the port board.

Step 8 — Wi-Fi Module



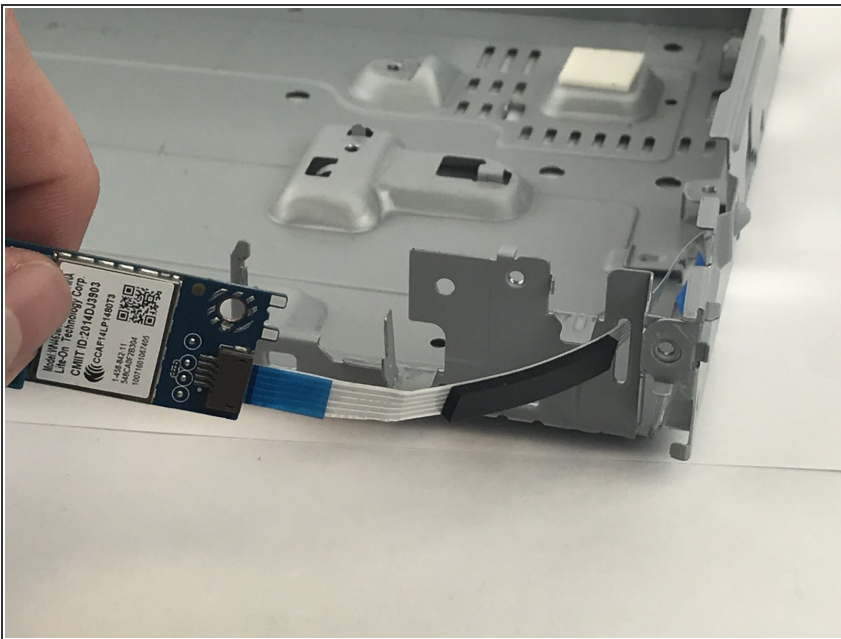
- Remove the ribbon connecting the Wi-Fi module to the motherboard.

Step 9



- Use the PH1 screwdriver to remove the 7mm screw on the module.

Step 10



- Remove the Wi-Fi module

To reassemble your device, follow these instructions in reverse order.