



Sony BDP-S3700 Motherboard Replacement

The motherboard is the brain of the Sony BDP-S3700. This guide shows how to replace a faulty one.

Written By: Luiz Barreto



INTRODUCTION

The motherboard is the brain of the Sony BDP-S3700. This guide shows how to replace a faulty one.



TOOLS:

- [Phillips #1 Screwdriver](#) (1)
-

Step 1 — Front Panel



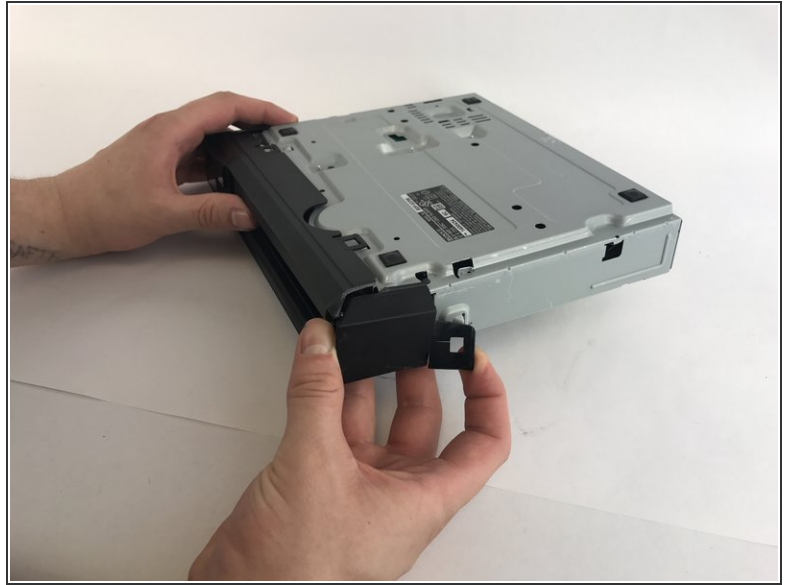
- Use the PH1 screwdriver to remove the two 9mm screws on the back of the Blu-ray player.

Step 2



- Remove the back of the device by slowly sliding the rear outer housing backwards.

Step 3



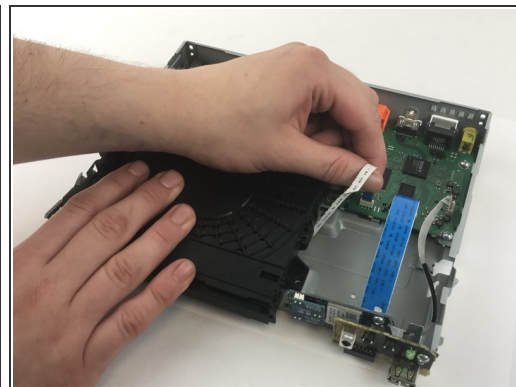
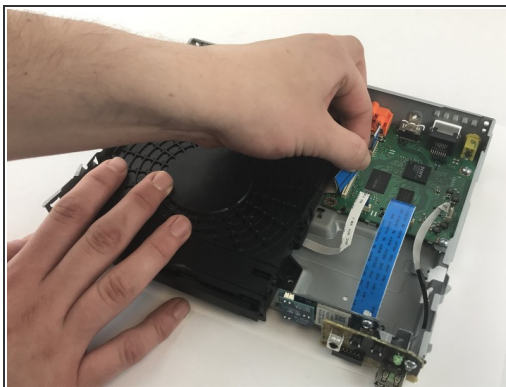
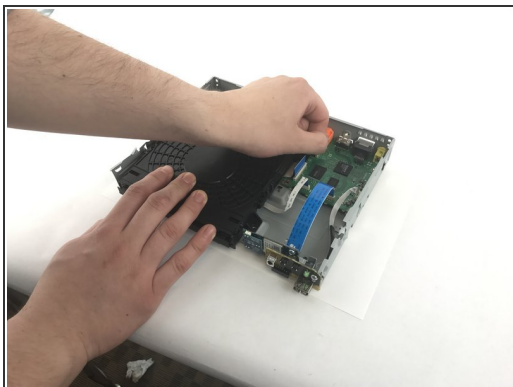
- Turn the Blu-ray over
- Pry open the clips under and on the sides

Step 4



- Once all the clips are open, slide the front outer housing out.

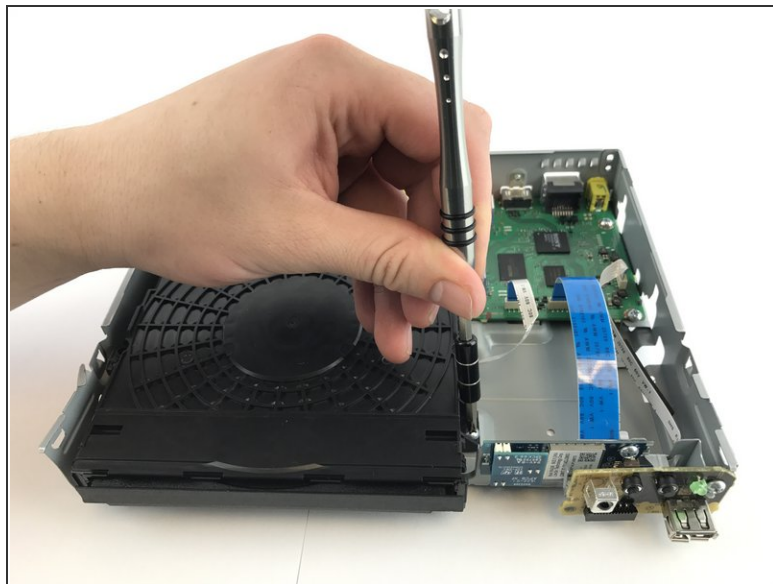
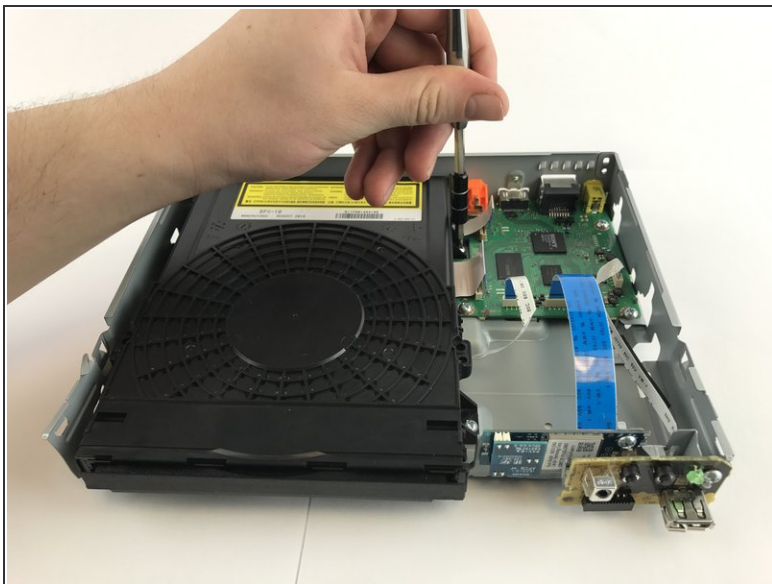
Step 5 — Disc Drive



- Flip the Blu-ray back up
- Remove the three ribbon cables that connect the disc drive to the motherboard.

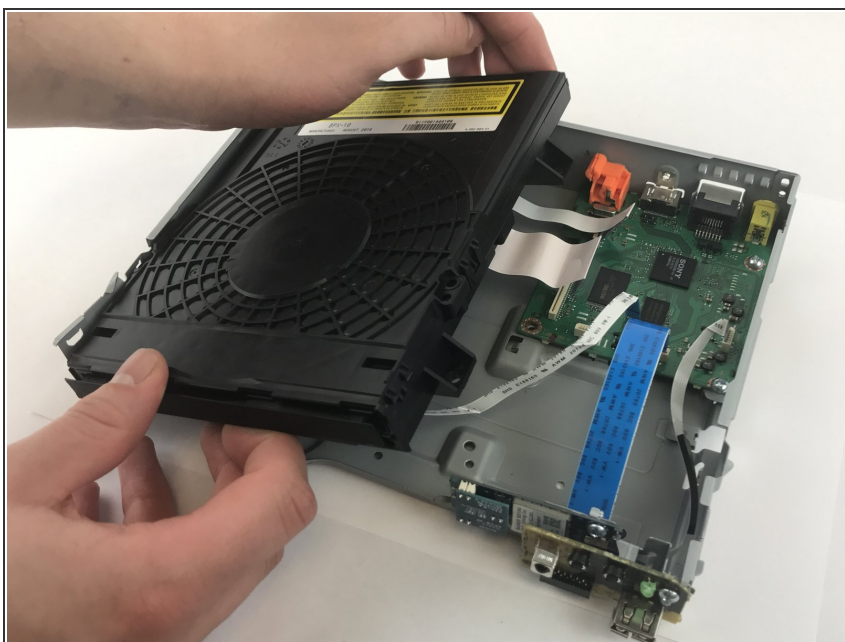
⚠ Handle the circuits only on its side.

Step 6



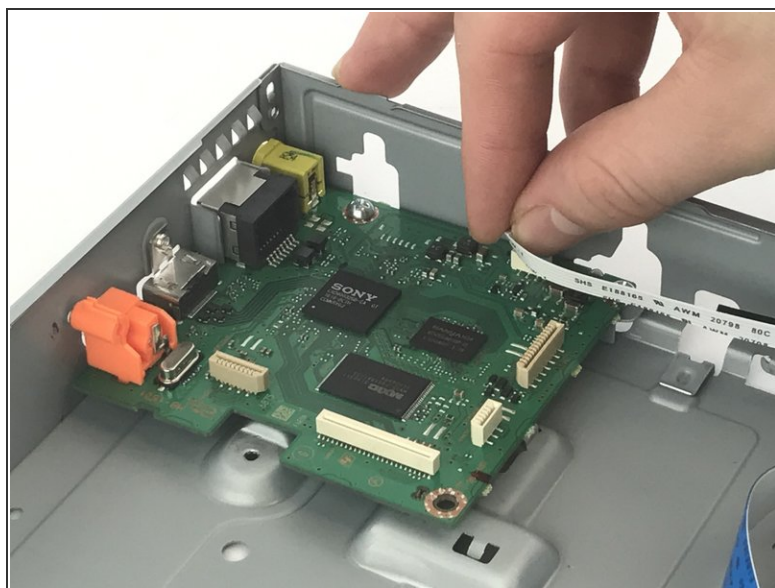
- Use a PH1 screwdriver to unscrew both of the 7mm screws on the side of the disc reader.

Step 7



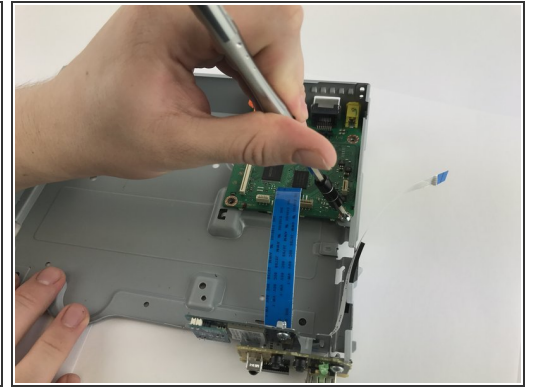
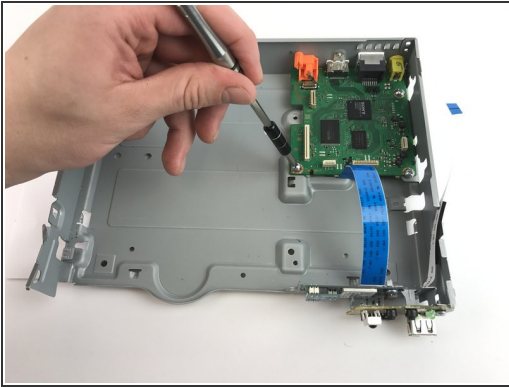
- Gently slide the disc drive to the right and lift up to remove the disc drive from the body of the player.

Step 8 — Motherboard



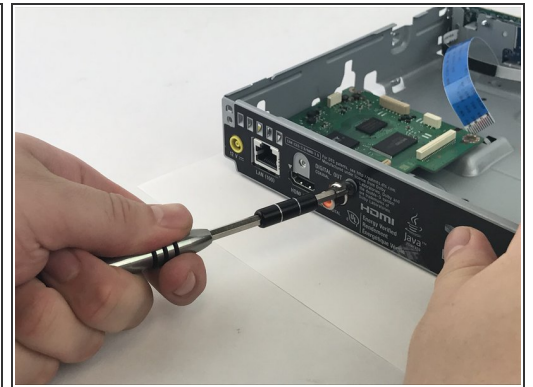
- Gently pull upwards on the ribbon cables to disconnect the motherboard from the Wi-Fi module and port board.

Step 9



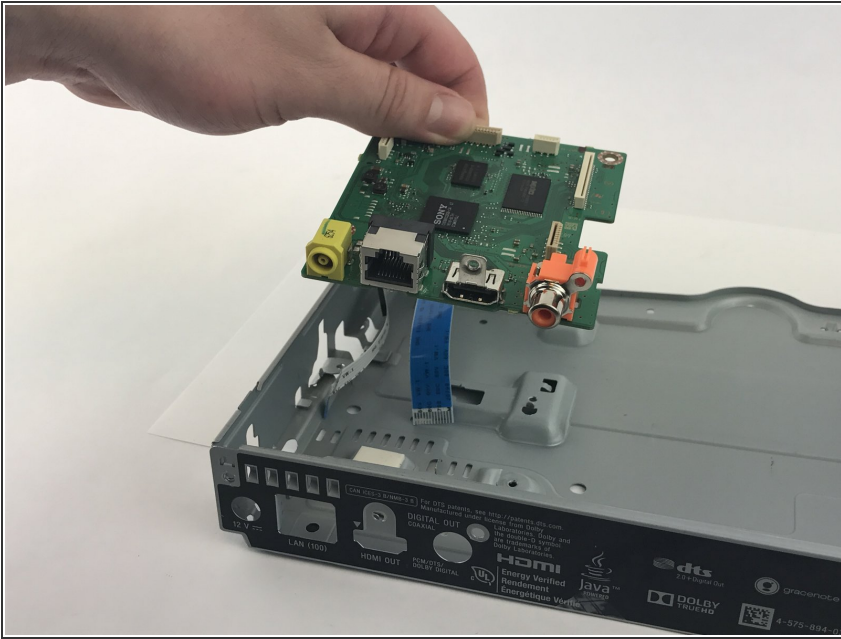
- Remove the three 7mm screws along the motherboard using a PH1 screwdriver.

Step 10



- Remove the 4mm screw above the HDMI port and the 9mm screw Digital Out port.

Step 11



- Carefully lift and pull the motherboard forward to remove.

To reassemble your device, follow these instructions in reverse order.