



Roland G-800 Top cover Replacement

Written By: Andrew

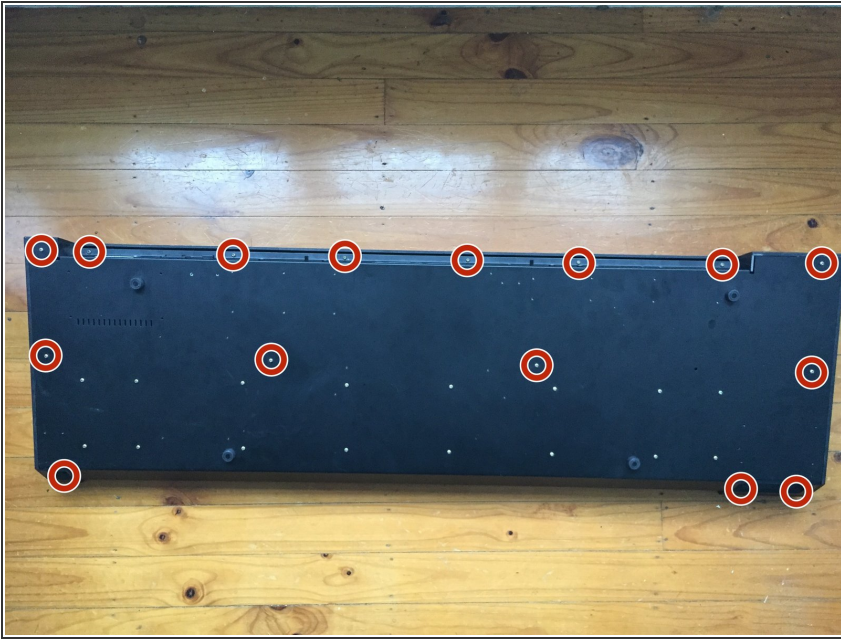




TOOLS:

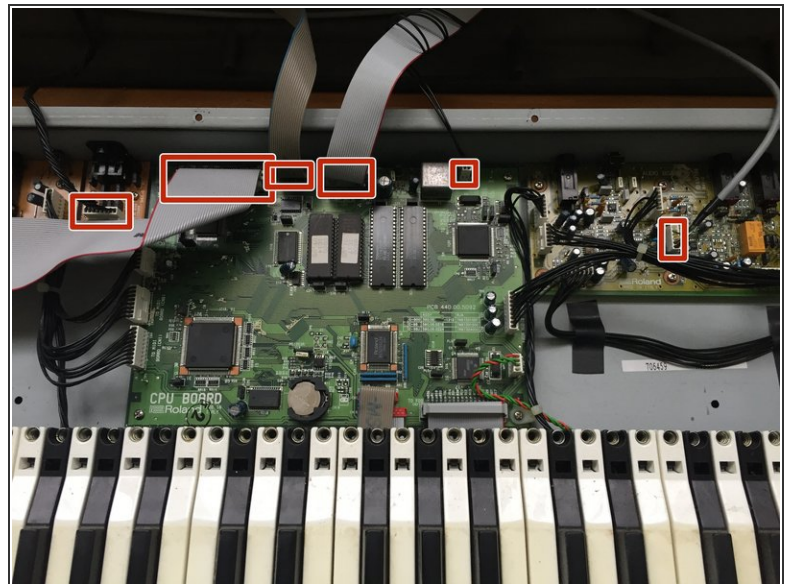
- [Phillips #2 Screwdriver](#) (1)
-

Step 1 — Top cover



- Turn the keyboard upside down to access the screws
- Remove 15 Philips PH2 screws
- ❗ Don't worry about the other 16 screws, they hold the keys to the bottom case.

Step 2



- Turn the keyboard upright again and lift the top cover from the front
- Remove 6 connectors

To reassemble your device, follow these instructions in reverse order.