

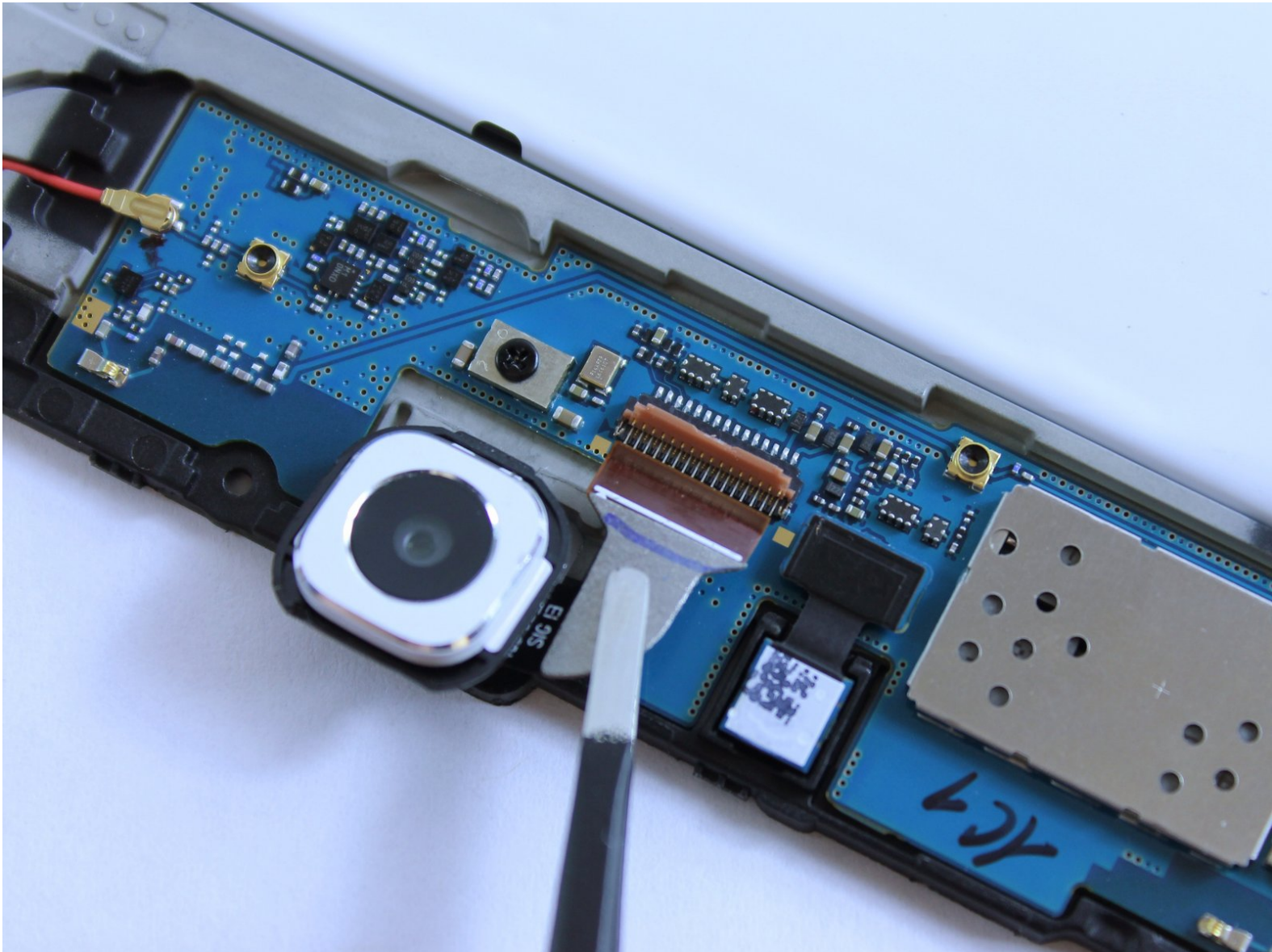


# Samsung Galaxy Tab S2 9.7 Verizon Tablet

## Rear-Facing Camera Replacement

Use this guide to replace the rear-facing camera on a Samsung Galaxy Tab S2 9.7 Verizon Tablet

Written By: Divya Prabakaran



---

## INTRODUCTION

If your camera has been damaged or not working properly, use this guide to replace your rear-facing camera.


---

### TOOLS:

- [iOpener](#) (1)
  - [64 Bit Driver Kit](#) (1)
  - [Metal Spudger Set](#) (1)
  - [Suction Handle](#) (1)
  - [ESD Safe Tweezers Blunt Nose](#) (1)
  - [Phillips #000 Screwdriver](#) (1)
-

## Step 1 — Back Case



 Turn off the tablet before disassembly.

- Heat up an iOpener for 30 seconds and place on all four seams of the screen. A heat gun can be used as well.

## Step 2

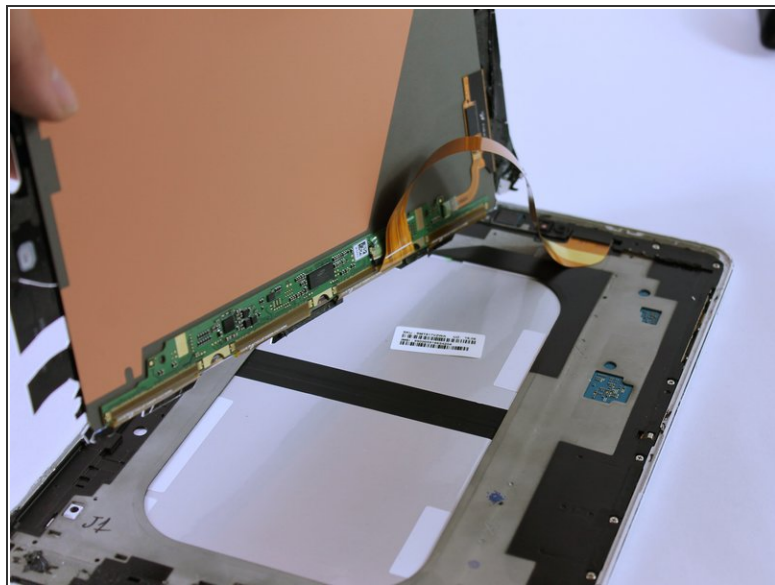
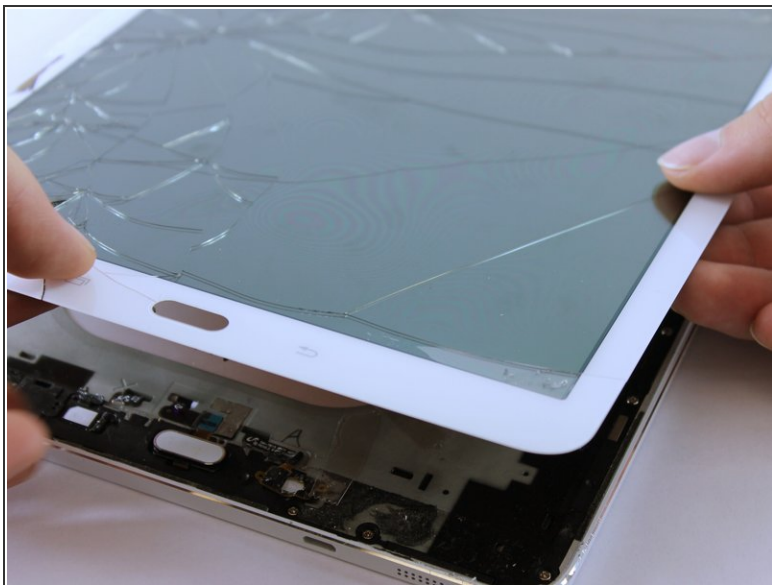


- The glue is now melted, so using the metal spudger shown, pry open all sides of the tablet.
- When prying open near the home and touch screen buttons, use a suction cup.

 Do not stick the metal spudger past these buttons as this may damage your device.



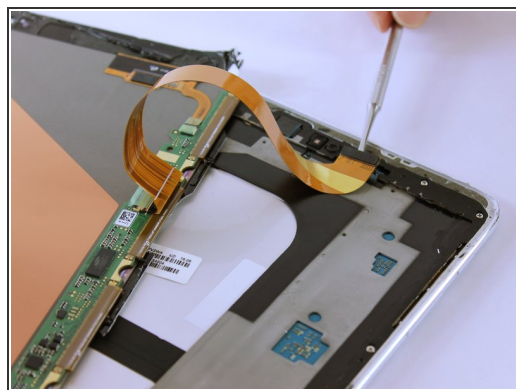
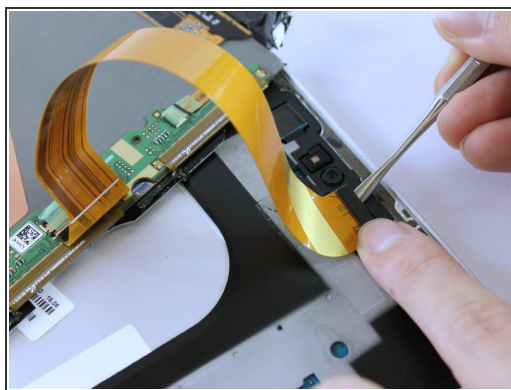
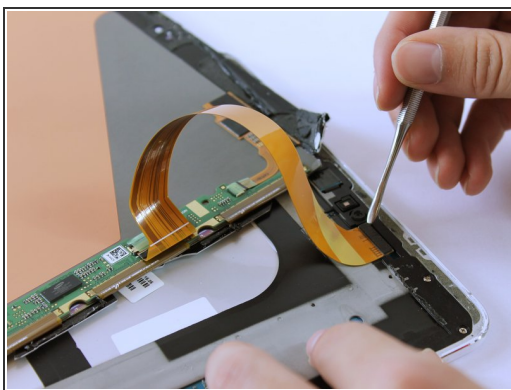
## Step 3



- Carefully lift up the screen.

⚠ There is a ribbon cable attached. Lifting the screen too quickly can damage the cable.

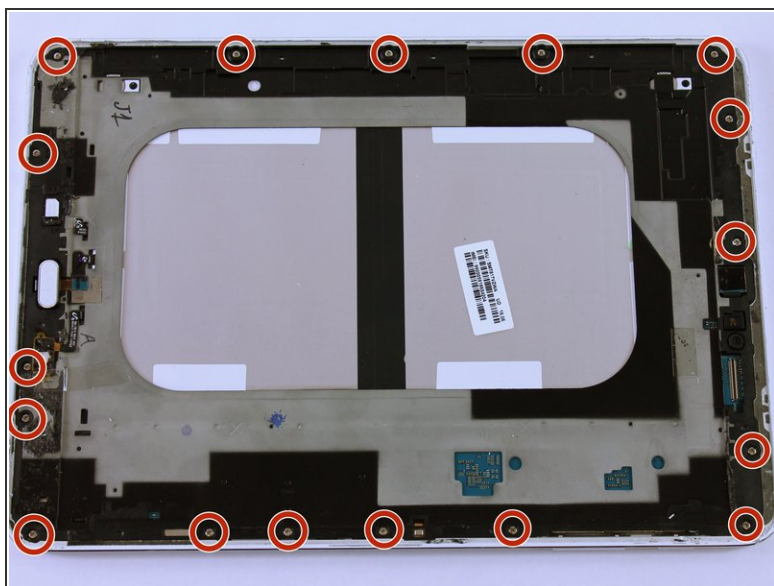
## Step 4



- Remove the ribbon cable using the Metal Spudger.

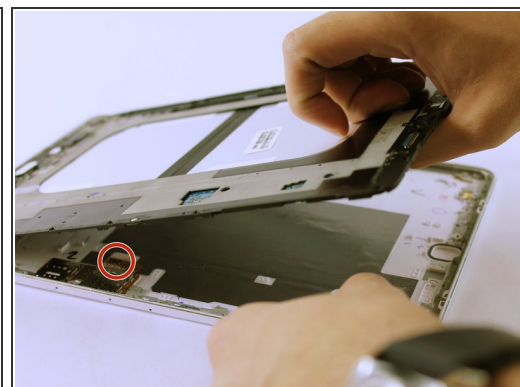
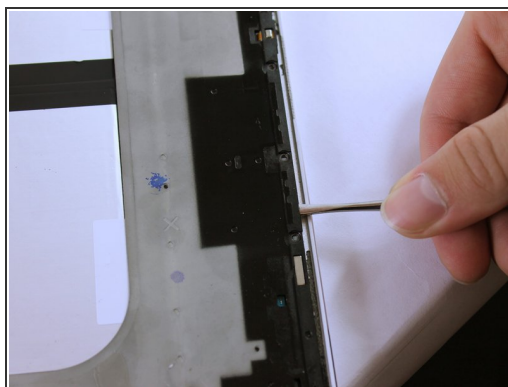
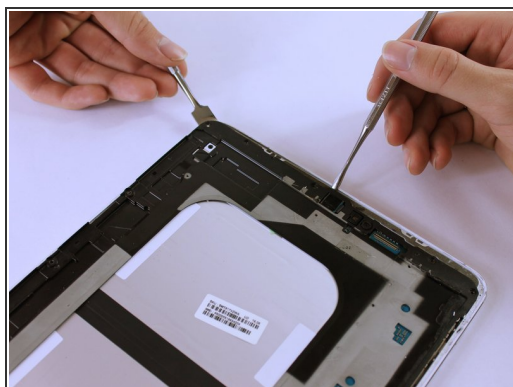
ⓘ The ribbon may be taped underneath to the grey frame. Gently lift the ribbon to untape it.

## Step 5



- Remove all seventeen 3 mm screws using a PH000 Phillips screwdriver.

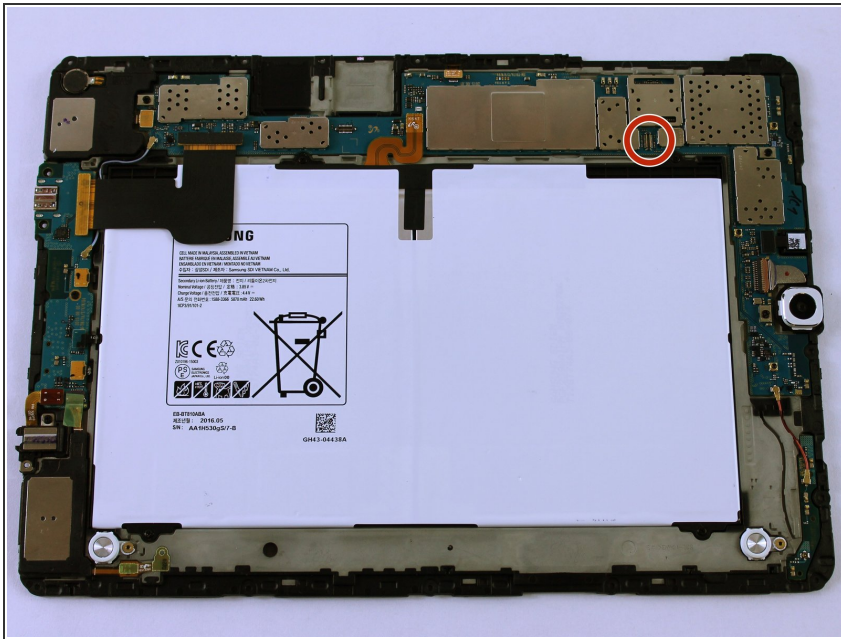
## Step 6



- Lift the black frame using the two Metal Spudgers shown.
- ❗ On the third picture, there is a Sim Card component that is connected to the frame and back cover. As you lift up the frame, it'll detach. This is normal.

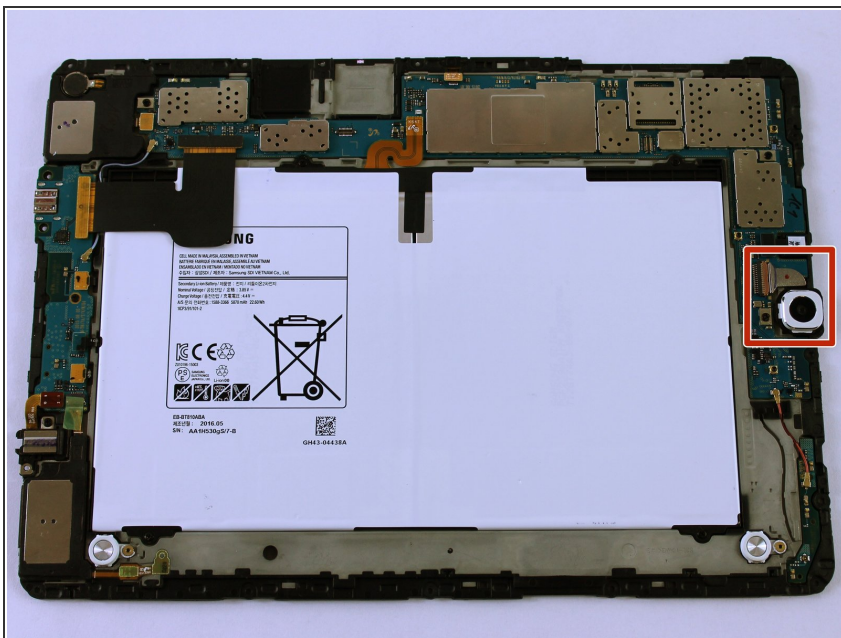


## Step 7



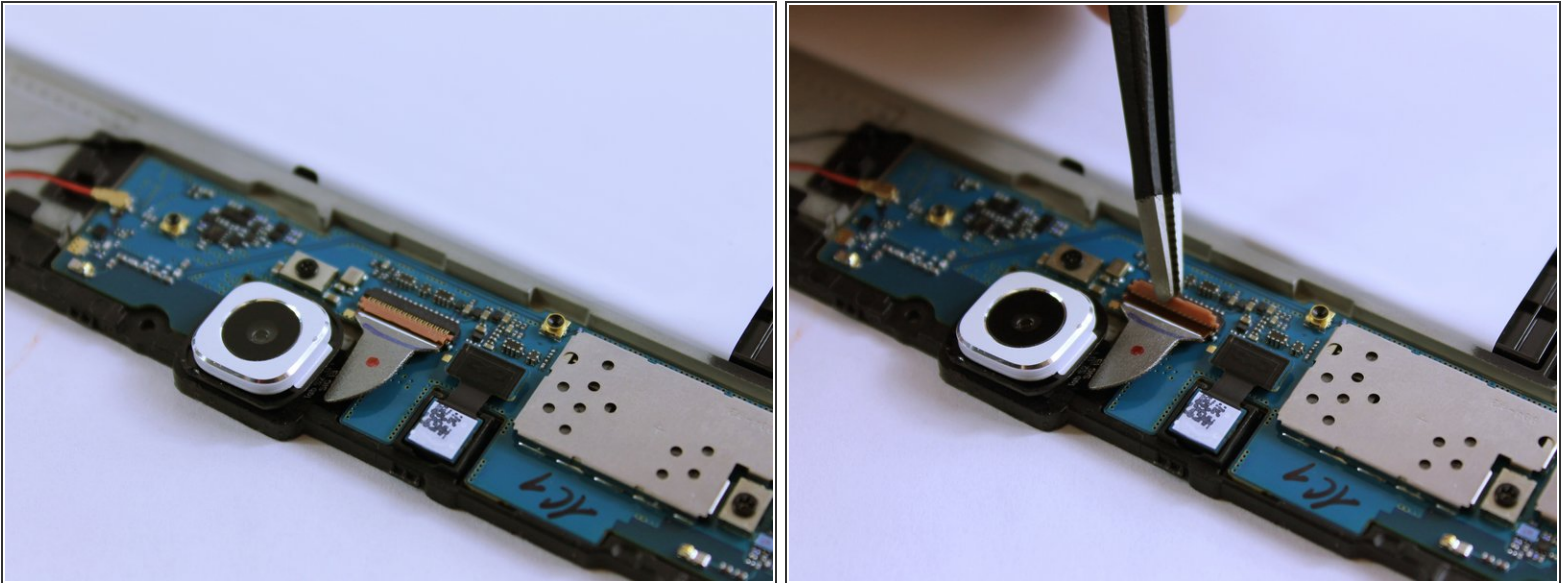
- Once lifted, flip the grey frame over.
- This component connects to the sim card.
- ☑ Remember to click this component back into place when reassembling the tablet.

## Step 8 — Rear-Facing Camera



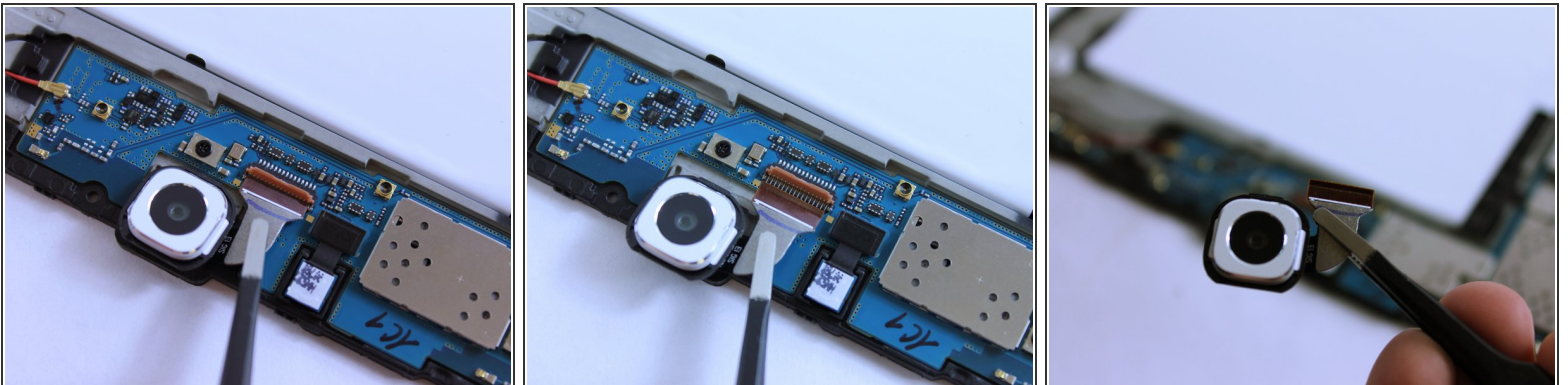
- This is where the rear-facing camera is located on the frame.

## Step 9




- Using the Blunt ESD Tweezer, lift the tab of the ZIF connector.

## Step 10



- Lift the ribbon cable out and away from the connector.

 Lifting the ribbon cable straight up could cause damage to the ZIFF connector.

- Lift the camera.

To reassemble your device, follow these instructions in reverse order.