



PlayStation Vita Left Shoulder Button Replacement

This guide takes you through the process of...

Written By: Brittany McCrigler



INTRODUCTION

This guide takes you through the process of installing the left shoulder button on the PlayStation Vita.

TOOLS:

Phillips #00 Screwdriver (1)
iFixit Opening Tool (1)
Spudger (1)
Tweezers (1)

PARTS:

PlayStation Vita Left Shoulder Button Cover (1)
PlayStation Vita Left Shoulder Button Bezel (1)
PlayStation Vita Left Shoulder Button (1)

Step 1 — Case Separation



 Power off and remove the memory card.

- Using a Phillips #00 screwdriver, remove the four 6.4mm screws on the back casing.

Step 2



- Using your fingernail or a spudger, pry open the accessory port cover on the top of the device.
- Using a Phillips #00 screwdriver, remove the two 5.4mm screws hidden beneath the accessory port cover.

Step 3



- Remove the two 5.4mm Phillips #00 screws on the bottom of the device near the charging port.

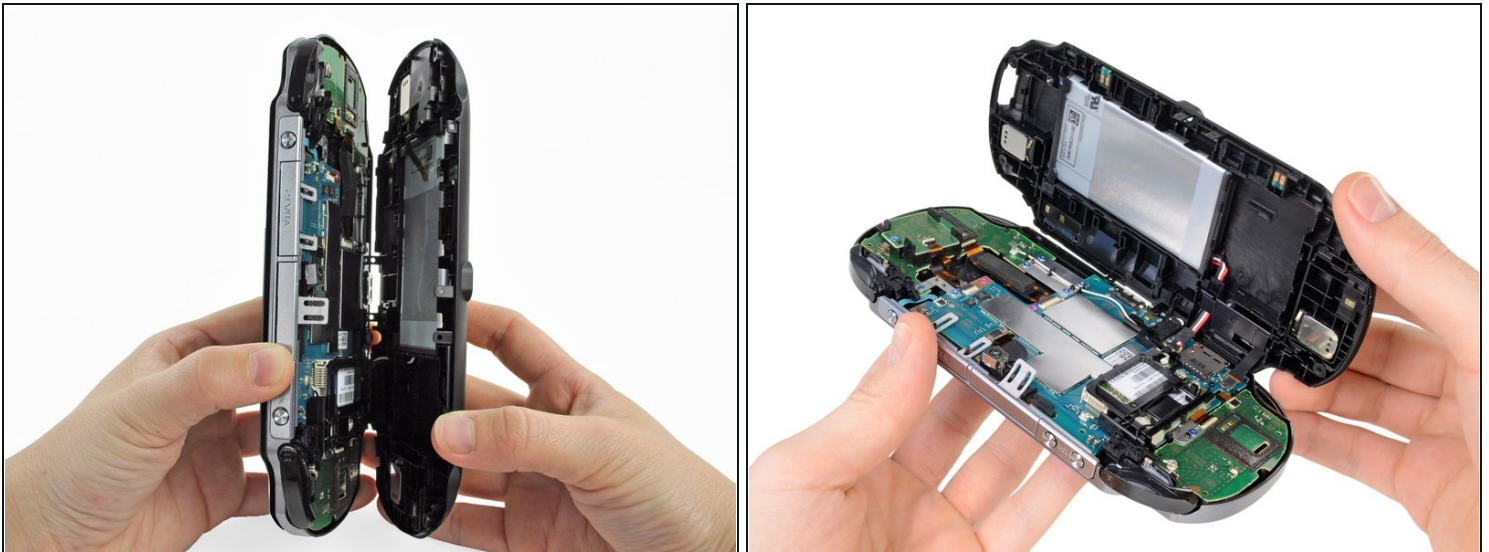
Step 4



- Beginning at the sides of the device, use a plastic opening tool to separate the front and rear cases.
- Continue working your way around the device gently prying it open.

⚠ There are still wires holding the front and rear cases together. You may damage the connections if you yank the cases completely apart.

Step 5



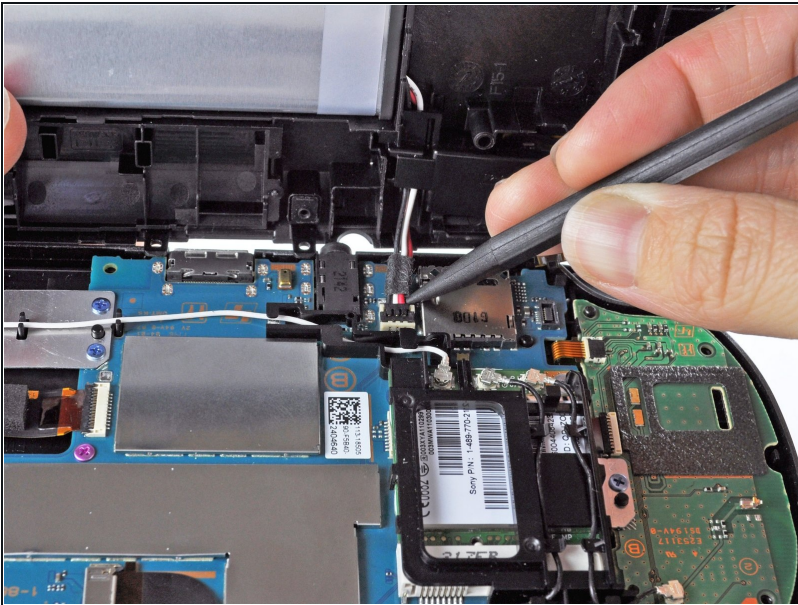
- Gently separate the two cases, minding the battery and the touch screen controller connectors holding the two cases together.

Step 6



- Using a spudger, free the touch screen controller flex cable by gently prying up the connection.

Step 7



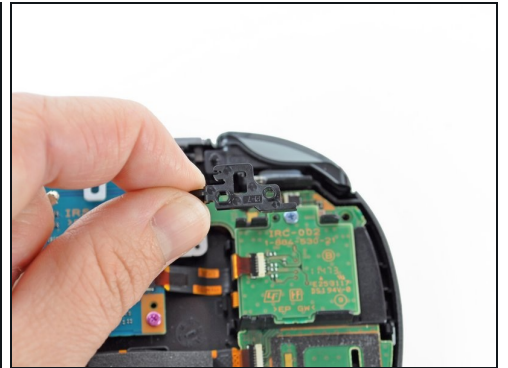
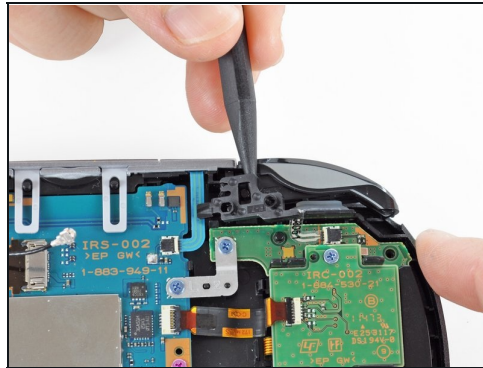
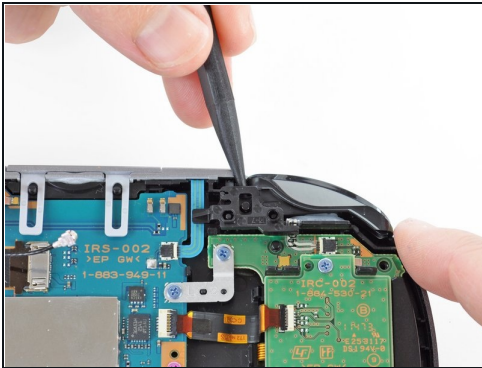
- Free the battery cable by gently prying up on the connection with a spudger.

Step 8



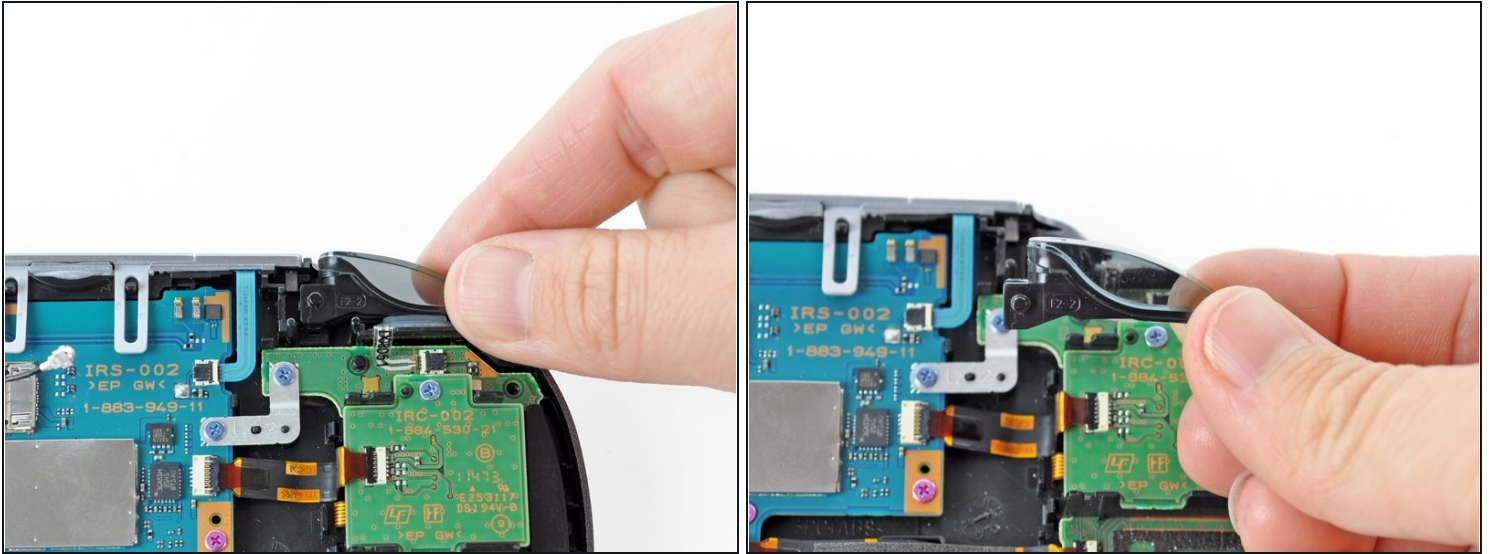
- Separate the front and rear cases.

Step 9 — Left Shoulder Button



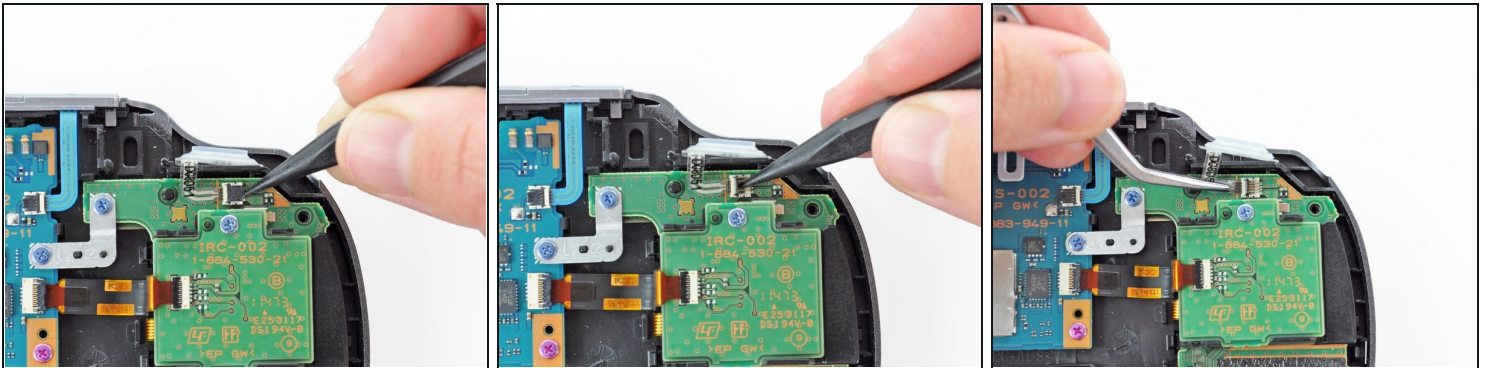
- Pry up the left shoulder button casing with a spudger.
- Remove the left shoulder button casing.

Step 10



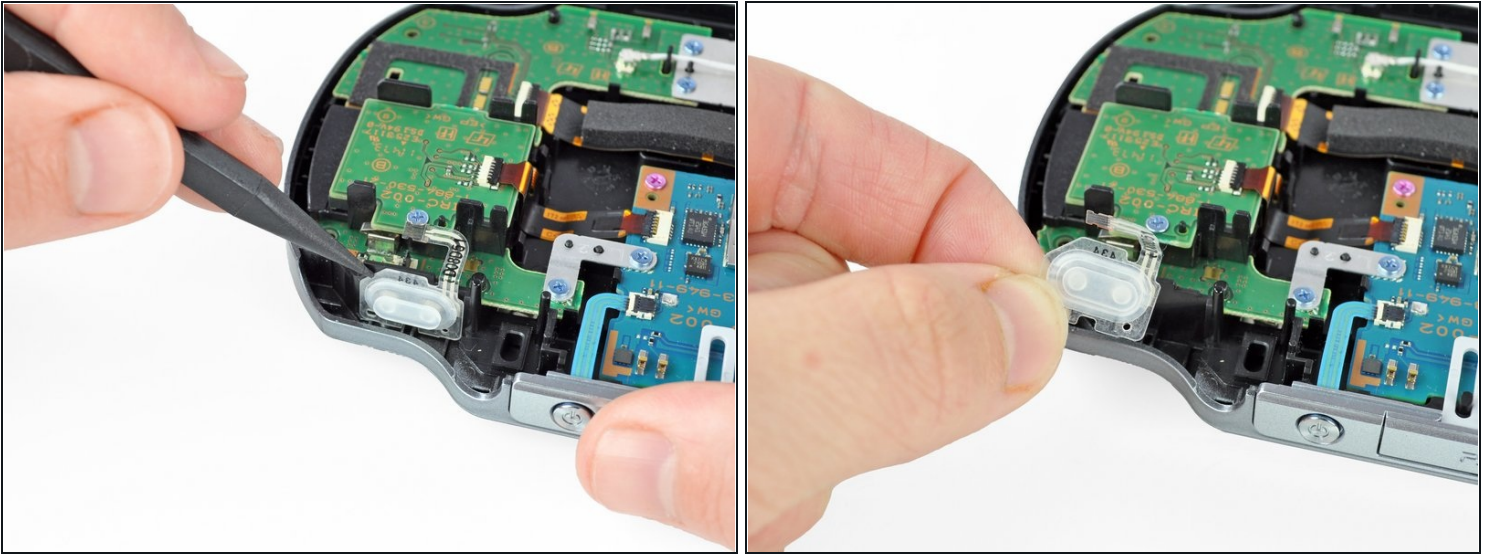
- Remove the translucent, plastic left shoulder button cover.

Step 11



- Release the left shoulder button flex cable socket by using a spudger to pry open the tab.
⚠ Be careful to not break off this small black tab!
- Using [tweezers](#), slide the flex cable out of the socket. Do not pull on the black tab! Instead, pull the thin flex cable away from the connector (to the left in this image).

Step 12



- Using a spudger, gently peel up the left shoulder button from the light adhesive connecting it to casing.

To reassemble your device, follow these instructions in reverse order.