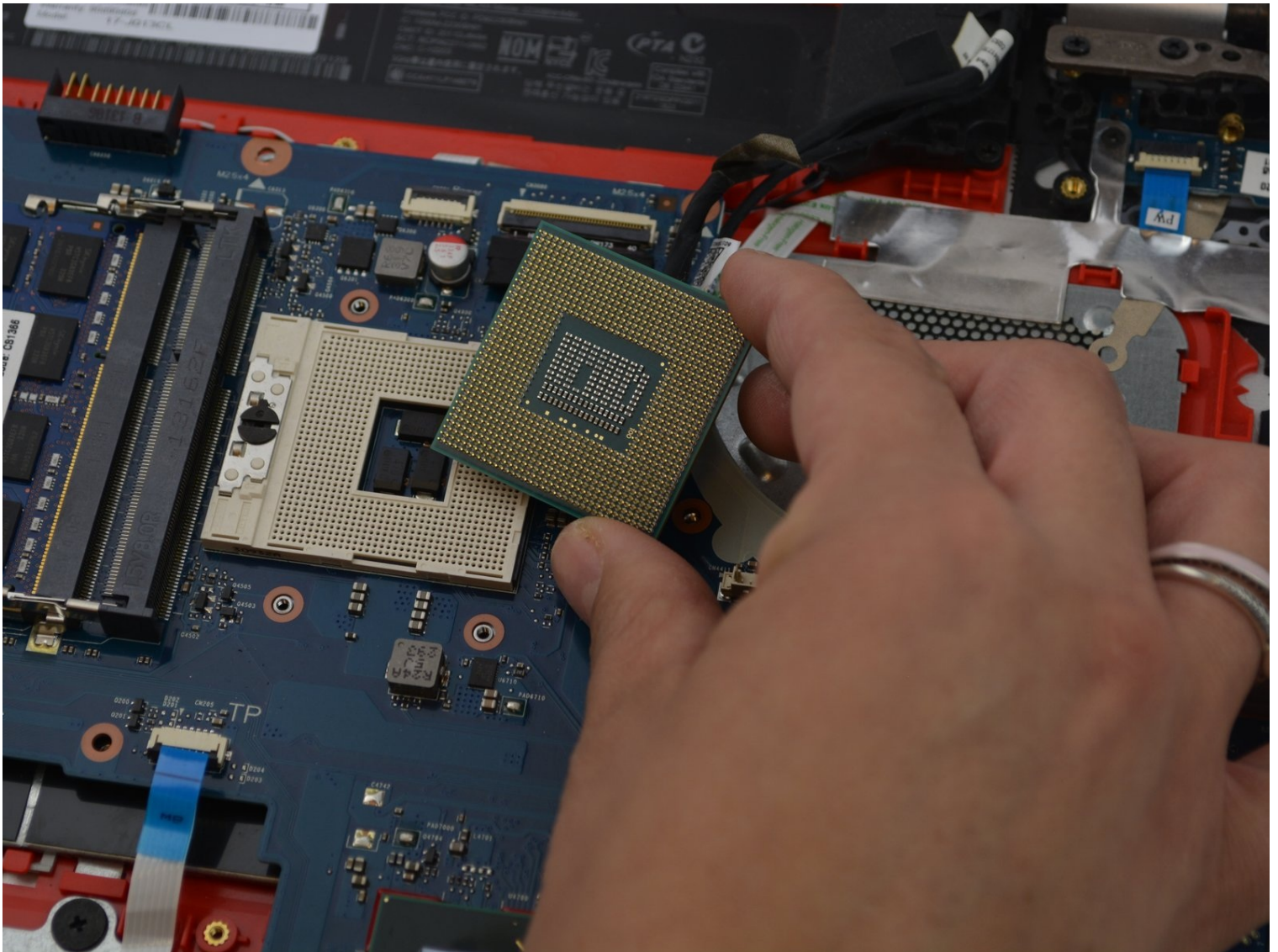




# HP Envy 17-J013CL Processor Replacement

The CPU plays the most important part to the...

Written By: Matt McBride



## INTRODUCTION

The CPU plays the most important part to the laptop's system as it is where everything is done. The most important part is also the most easy to be broken so a lot of care must be taken in order to fix this! Keep yourself grounded and do not bend the pins!



### TOOLS:


Phillips #1 Screwdriver (1)

Flathead 3/32" or 2.5 mm Screwdriver (1)

## Step 1 — Battery



- Lay the laptop with the battery facing towards you.

 Remember to disconnect the AC cable and other power sources from the device before replacing/repairing parts.

## Step 2



- Grab hold of the small battery slider and apply pressure to the right.
- The laptop itself will push the battery out for you once the switch slides all the way to the right.

### Step 3



- Pull the battery out and let go of the battery slider.

### Step 4 — Back Panel



- Use a PH1-screwdriver to loosen the 7mm screw. The screw will not fully come out as it is held by a washer underneath but will come out enough to open it.

### Step 5



- Gently pull the back panel off starting from the battery side towards the back.
- Pull it back as it snaps out of the holding sockets.

⚠ It is preferred to use both hands when pulling the back panel off to prevent bending it out of shape.



## Step 6 — Processor



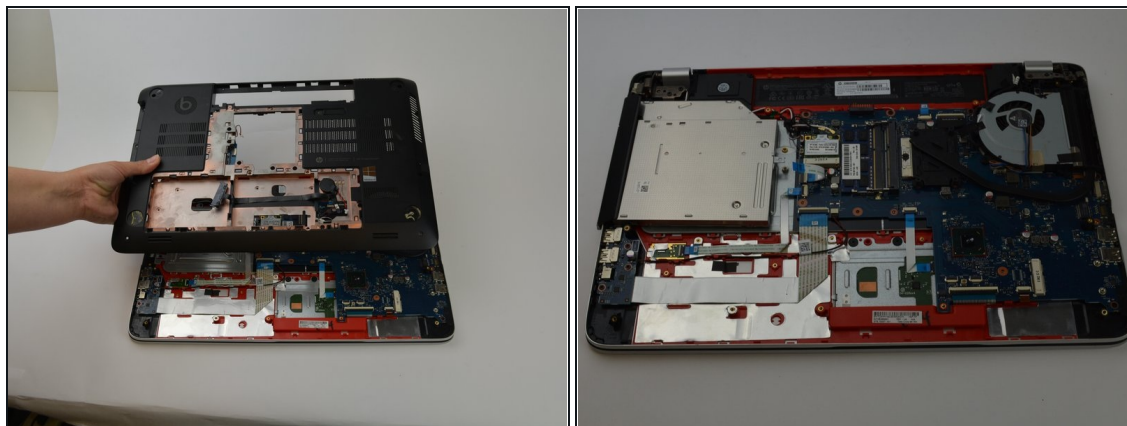
- Locate the 7mm screw for the optical drive right next to the WLAN and Memory modules.
- Remove the screw with a PH1-screwdriver to release the CD-drive.

## Step 7



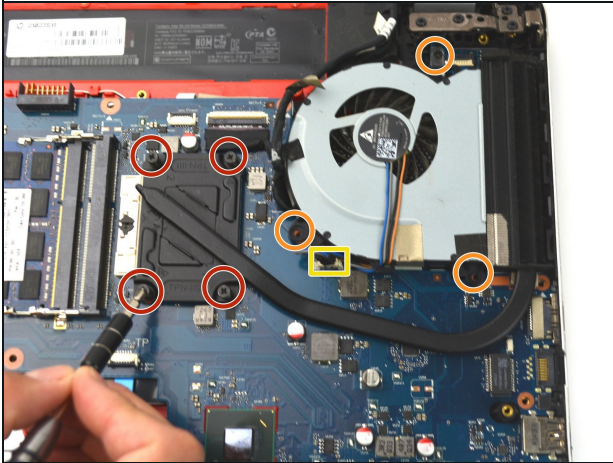
- Use a PH1-Screwdriver to remove all the 7mm screws.
- Use a PH0-Screwdriver to remove the 3mm screws.
- Use the same PH0-Screwdriver for the 2mm screws.

## Step 8



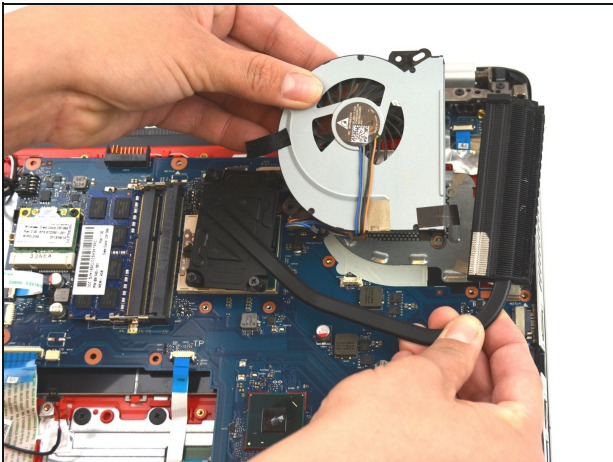
- Pull the under panel from the laptop by pulling at the edges once all screws are removed. Gently lift it off and place to the side.

## Step 9



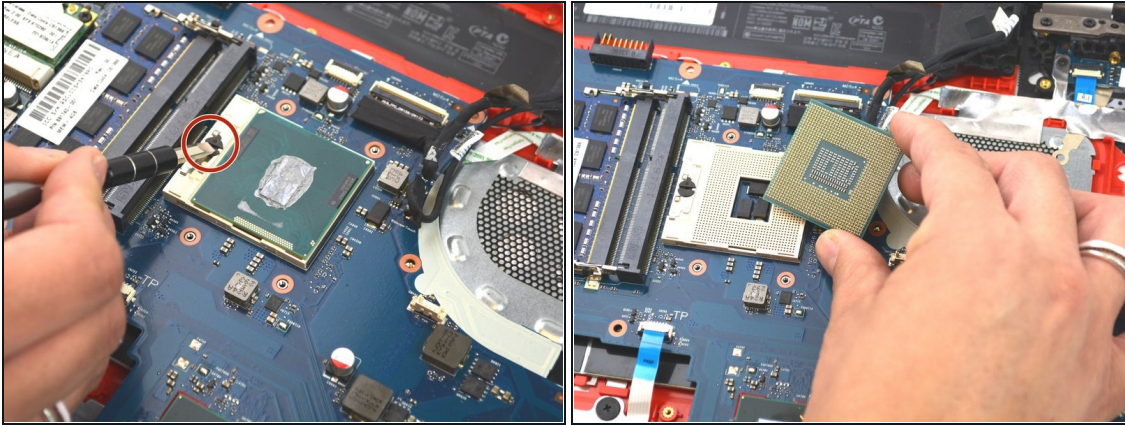
- Unscrew the coiled springs indicated in red from the the motherboard.
- Remove the 7mm screws with a PH1-screwdriver to loosen the fan.
- Unplug the fan from the motherboard.

## Step 10



- Lift the fan out and then lift out the black grill covering the processor.

## Step 11



- Use a Flathead screwdriver to turn the screw 180 degrees to unlock the processor from the motherboard.
  - Gently and vertically lift the processor out.
  - ☒ When placing the processor chip back in, make sure the golden triangle is on the top-left corner of the motherboard slot.
- ⚠ Be careful not to bend the pins on the processor chip. Broken pins will render the chip useless.**

To reassemble your device, follow these instructions in reverse order.