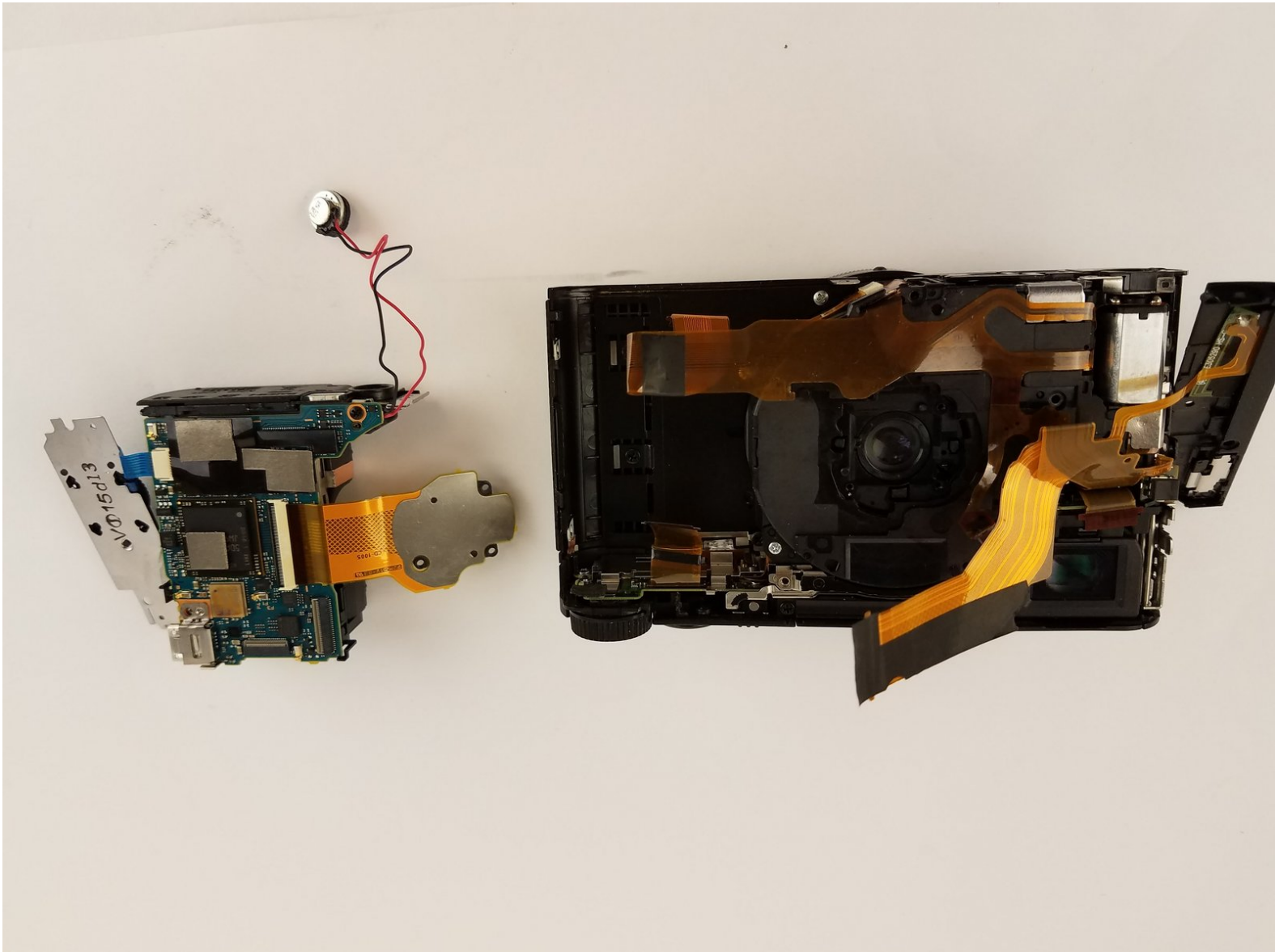




# Sony Cyber-shot DSC-HX90V Motherboard Replacement

This guide will show you the steps to removing and replacing the motherboard of the camera.

Written By: Marin Rusinov



# INTRODUCTION

This guide will show you the steps to removing and replacing the motherboard of the camera.



## TOOLS:

- [Heavy-Duty Spudger](#) (1)
  - [Phillips #000 Screwdriver](#) (1)
-

## Step 1 — Button board



- Place the device so bottom of the camera is facing up .
- Remove the five black M1.4 X 3.5 Phillips head screws with a Phillips #000 screwdriver.

## Step 2



- Remove the marked black M1.4 X 3.5 Phillips head screws on the side of the camera with a Phillips #000 screwdriver.

## Step 3



- Remove the marked screw with a Phillips #000 screwdriver.


## Step 4



- Use the plastic opening tool to remove the button board.


## Step 5



-  Disconnect the control board data cable with care. Permanent damage may occur to the control board if tools are used to disconnect the data cable. Use your fingers only.
- Disconnect the control board data cable by wiggling carefully with your fingertips. Set the control board to the side once it is disconnected.

## Step 6 — Side cover



- Use the plastic opening tool with a prying motion to remove the side cover of the camera.
-  The cover should come off easily but you might hear light snapping or popping.

## Step 7 — LCD



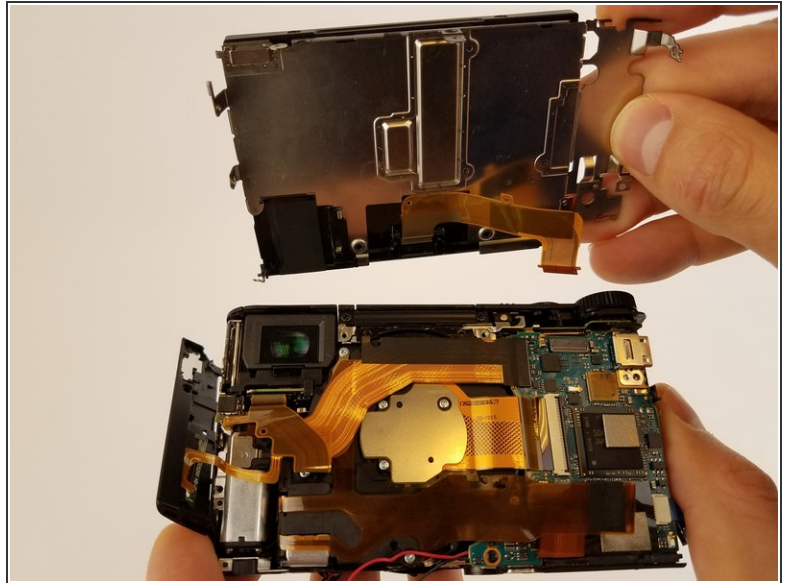
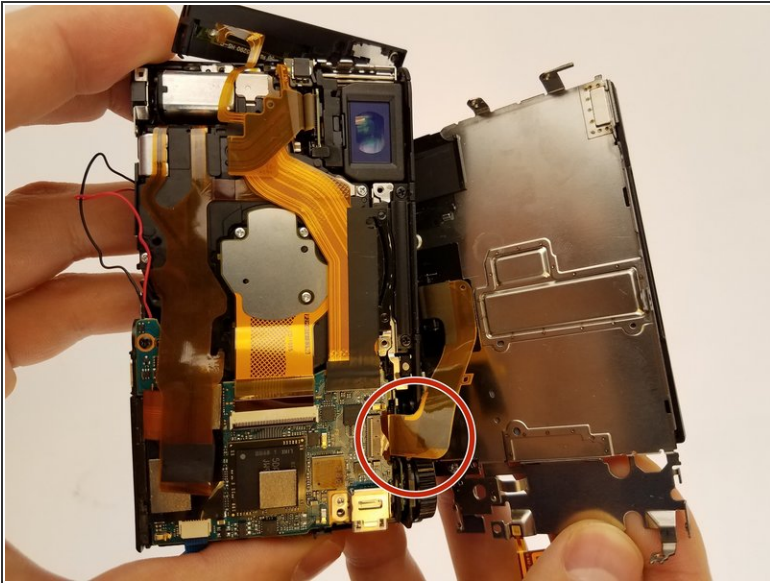
- Orient the device so the lens is facing down.
- Remove the two black M1.4 X 3.5 Phillips head screws using Phillips #000 screwdriver.

## Step 8



- Orient the device so the lens is facing down.
- Remove the black M1.4 X 3.5 Phillips head screw.

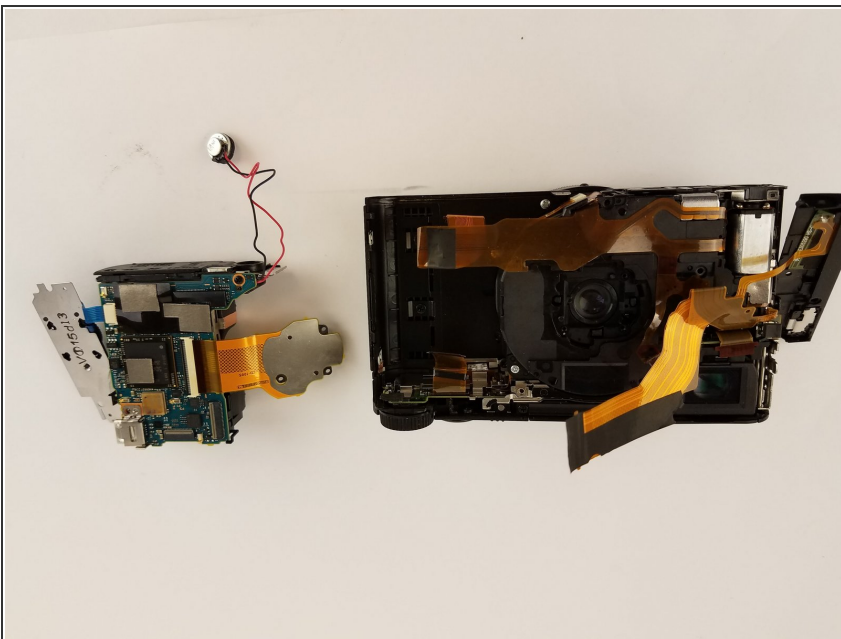
## Step 9



⚠ LCD screen is very fragile. Handle with care. Do not use tools to remove the screen.

- Remove the ribbon cable connecting LCD display to camera sensor and battery housing.

## Step 10 — Motherboard



- Make sure all ribbon cables are unplugged and remove the motherboard.

⚠ Ribbon wires can be easily damaged.

To reassemble your device, follow these instructions in reverse order.