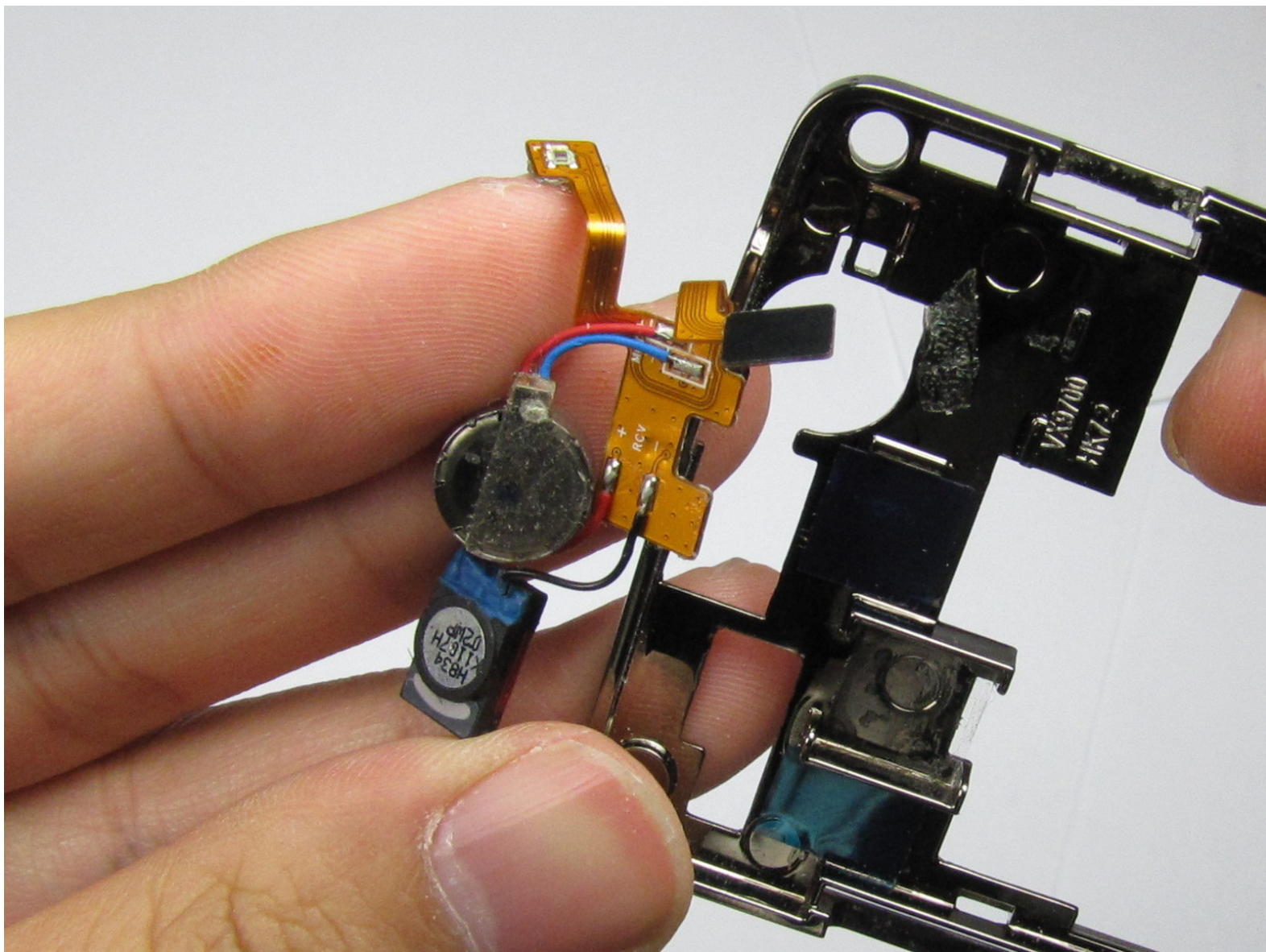




# LG Dare Earpiece Replacement

Step by step directions to replace a broken LG Dare earpiece.

Written By: Haoyan Huang



---

## INTRODUCTION

Use this guide to remove and replace the earpiece in your LG Dare cell phone.

---



### TOOLS:

- [Phillips #00 Screwdriver](#) (1)
  - [iFixit Opening Tools](#) (1)
-

## Step 1 — Battery



- Remove the back cover by firmly pressing against the raised lip on the back panel. Slide the cover towards the top of the phone.

## Step 2



- Remove the battery by placing your fingernail or a opening tool in the recessed edge and lift the battery out.

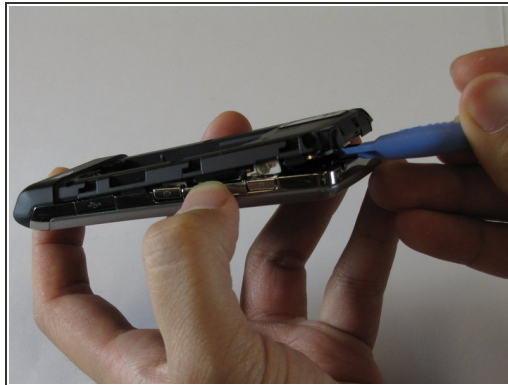


## Step 3 — Logic Board



- Use the #00 screwdriver to remove the six 4mm phillips screws located around the edges of the phone.

## Step 4



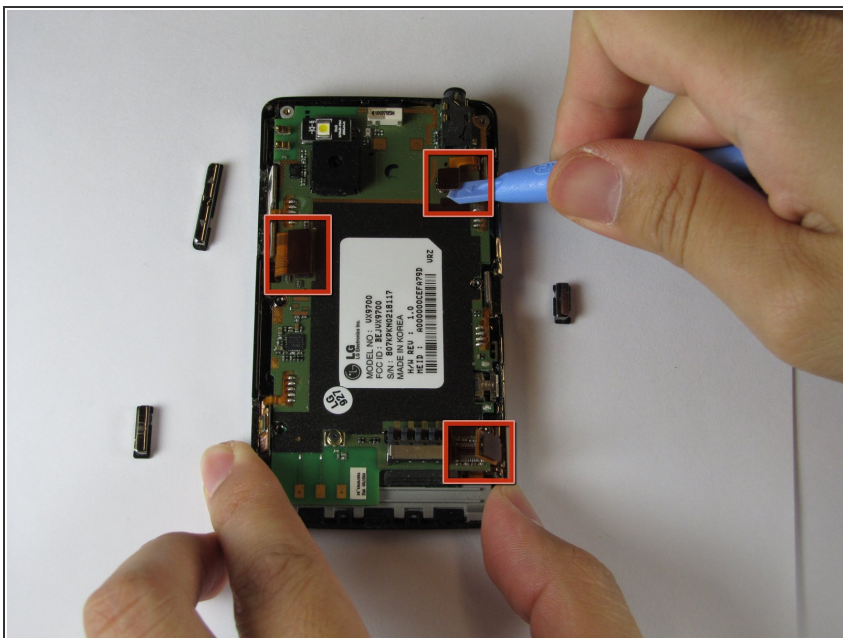
- Lift the back plastic cover off by moving the opening tool around the edges of the phone.
  - Wedging the opening tool in several places on the bottom of the phone will help release small tabs that hold the back to the front frame.
- i** The side buttons may fall out when removing the back plastic.

## Step 5



- Pull off the back plastic panel.
- Remove the buttons from the edge of the frame. The buttons are [lock], [volume control], [speaker], and [camera].

## Step 6



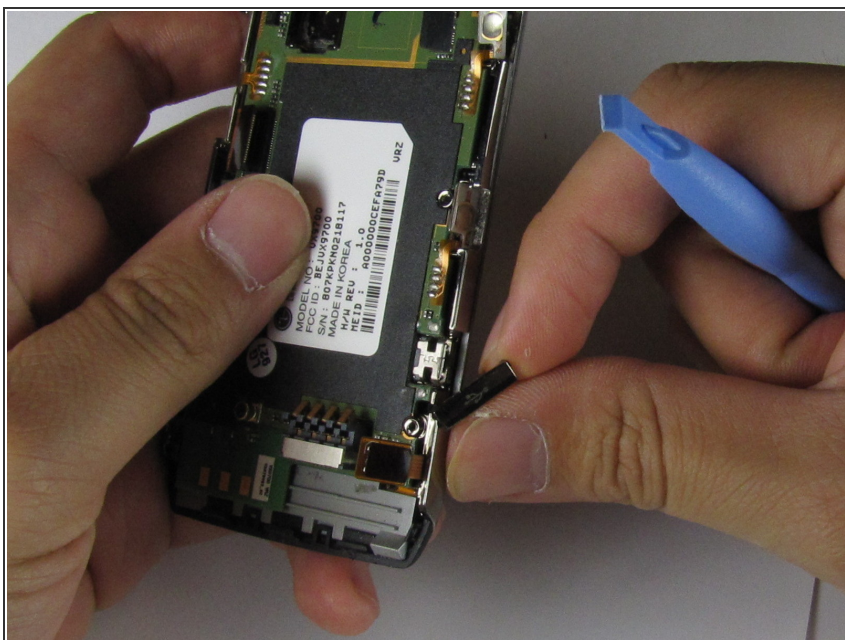
- Disconnect the three ribbon connectors from the motherboard.

## Step 7



- Remove the LED.
- Remove the camera connector.
- Remove the camera sensor from the logic board. Squeeze the sides of the camera sensor firmly and pull straight up.

## Step 8



- Open the USB port cover.

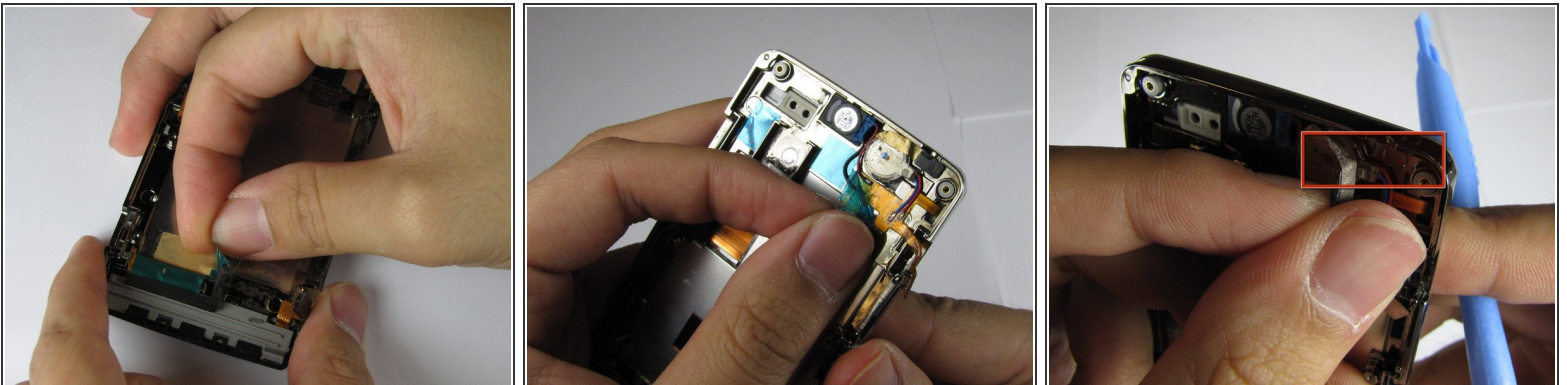


## Step 9



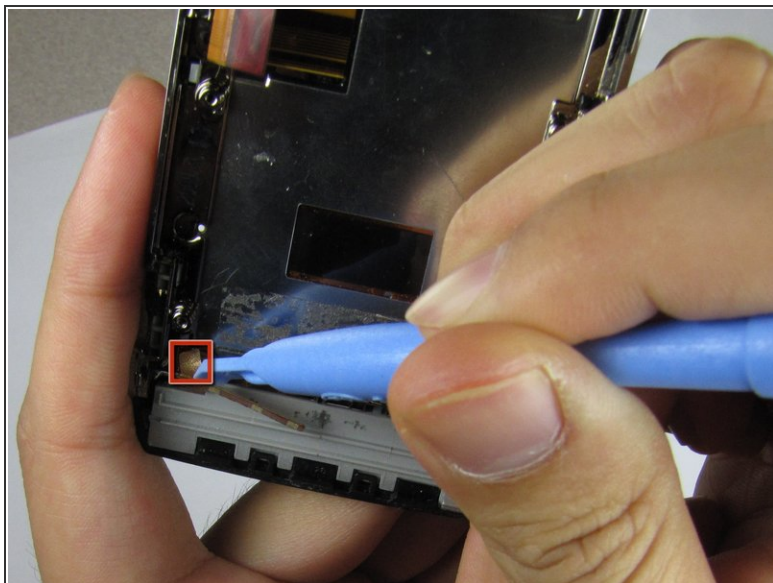
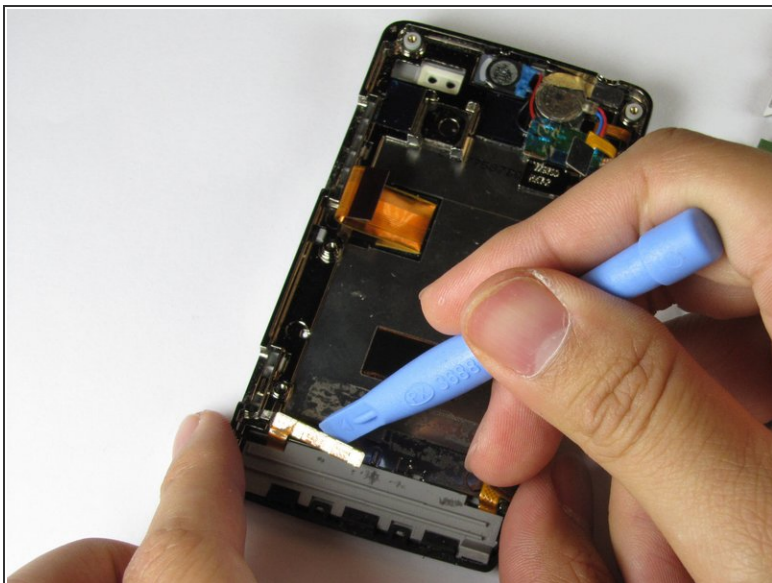
- Use the opening tool to lift up the green logic board in all areas and remove it.
- ⓘ The logic board may require some force to remove because it is taped to the plastic frame.
- ⓘ When removing the logic board, be careful not to tear any of the ribbon cables or side buttons.

## Step 10 — Earpiece



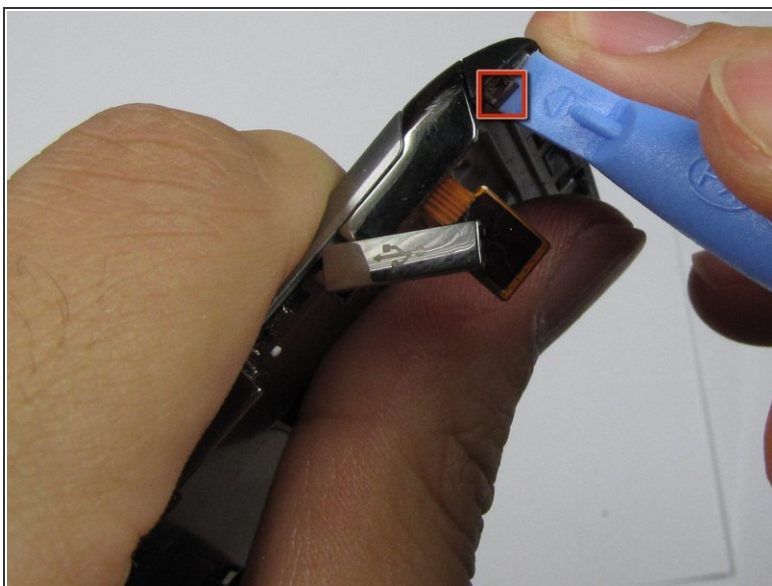
- Peel off the gold and green tape near the bottom of the phone.
- Peel off the blue tape covering the speaker connector.
- Peel off the gold tape to the left of the earpiece speaker.
- ⓘ It is unnecessary to remove the blue and gold tape from the device if the speaker is not being removed.

## Step 11



- Lift up the orange ribbon cable in the bottom left corner of the device.
- Peel off the small piece of gold tape underneath the orange component back.

## Step 12



- Undo the clips that attach the black plastic strip to the frame of the phone.
- Pry the plastic strip away from the phone, using an opening tool, until it detaches.

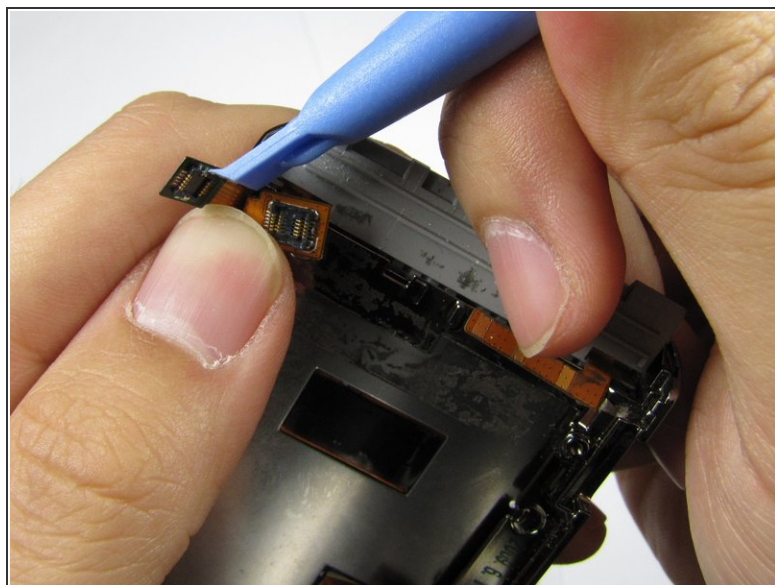
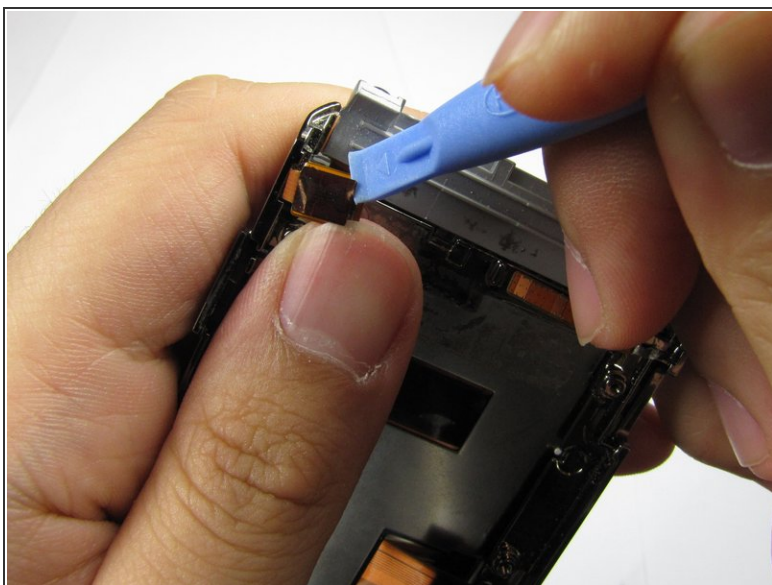


## Step 13



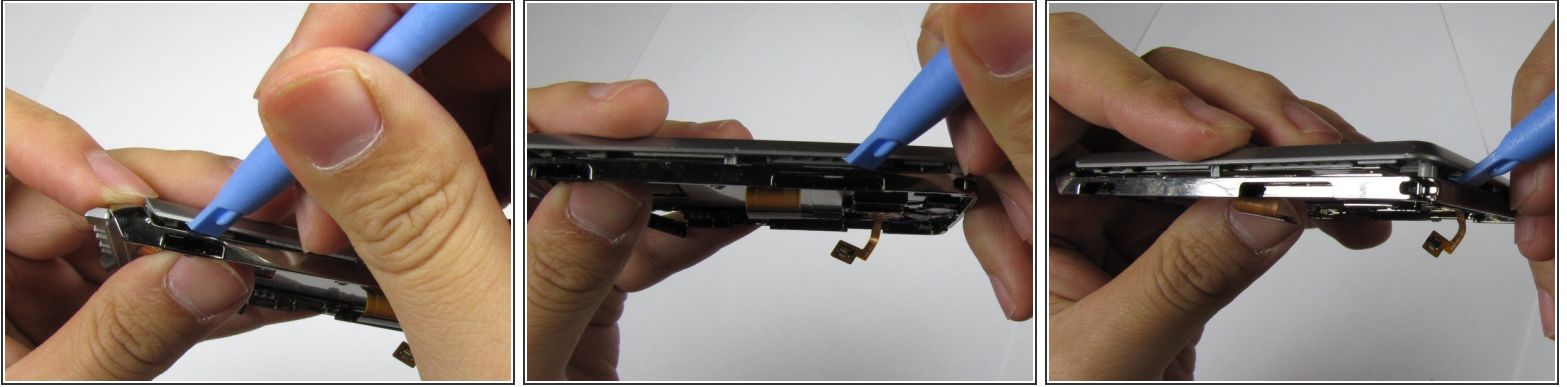
- Pry the button panel from the device, starting where the screen and panel connect, until the panel detaches.

## Step 14




- Rotate the phone upside down with the back facing you.
- Using your finger to hold the bottom connector in place, use the opening tool to remove the top connector.

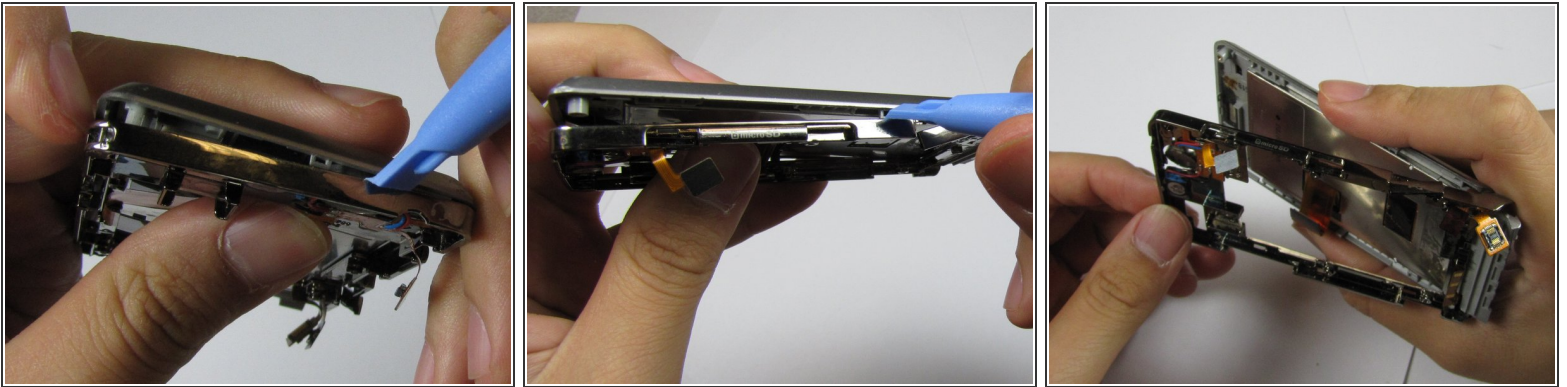
## Step 15



- Using the opening tool, pry the frame from the device, starting at the open edges at the bottom of the device, and working your way around.

 Do not detach the frame yet.

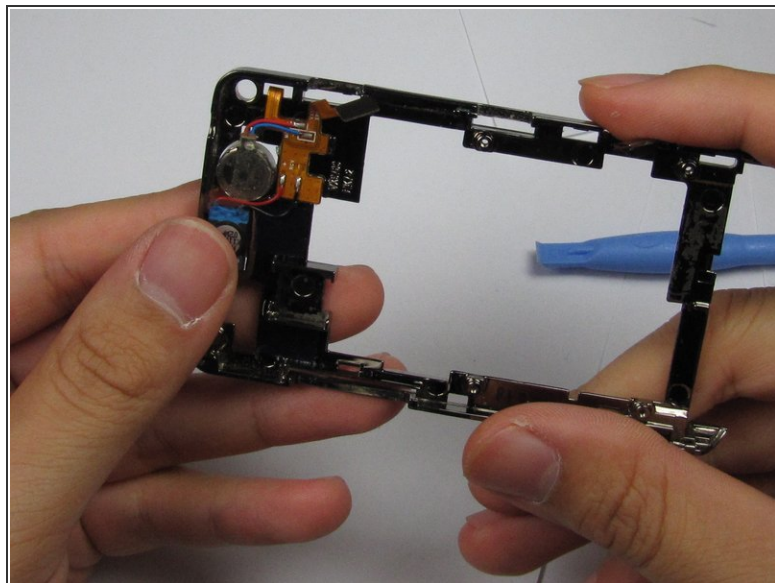
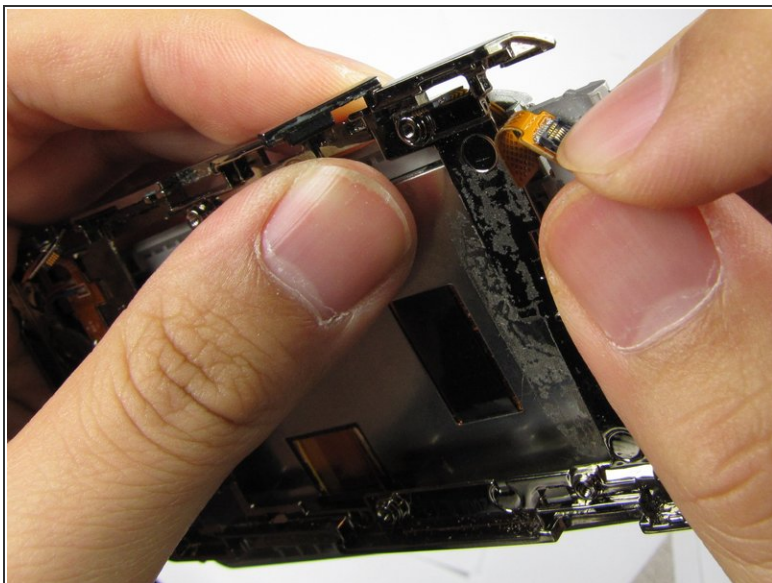
## Step 16



- Gently separate the top of the frame from the back of the device, without completely detaching at the bottom, as shown in the third picture.

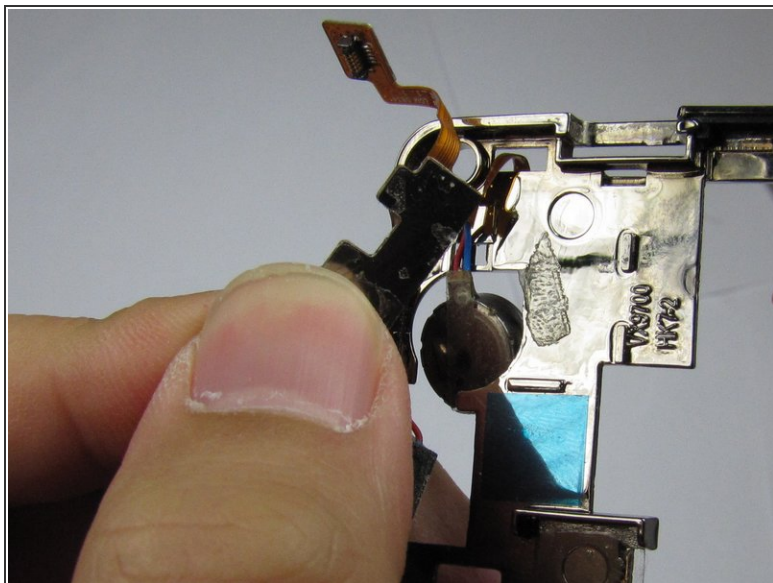
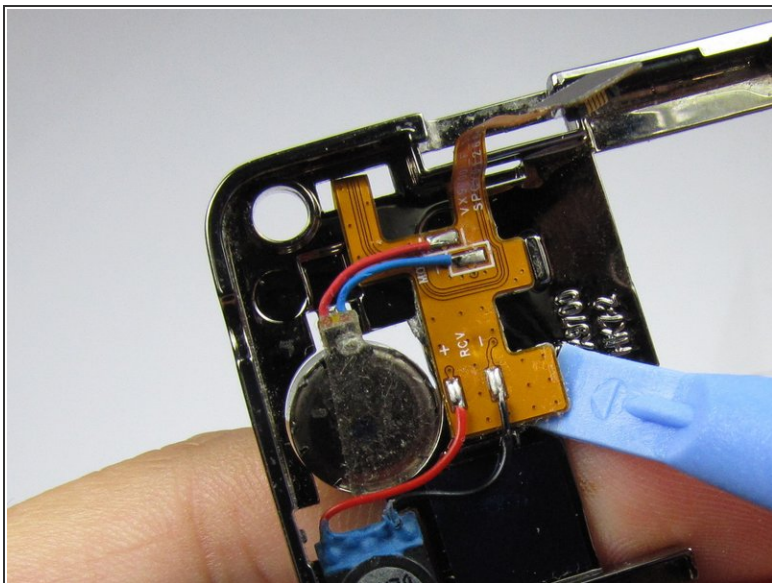


## Step 17



- Remove both connectors from the frame. Fold back the L-shaped connector and slide the second connector through the hole in the metal frame.
- Remove the frame from the plastic panel.
- ☞ The next two steps are for earpiece removal only.

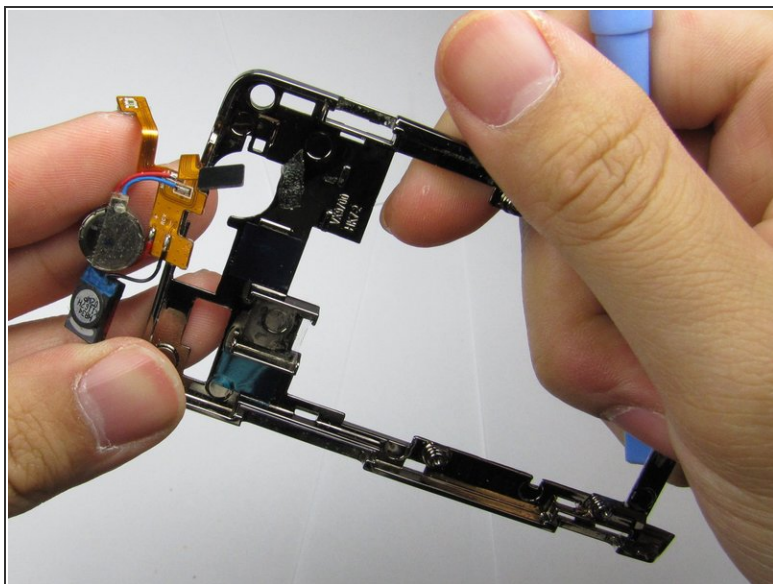
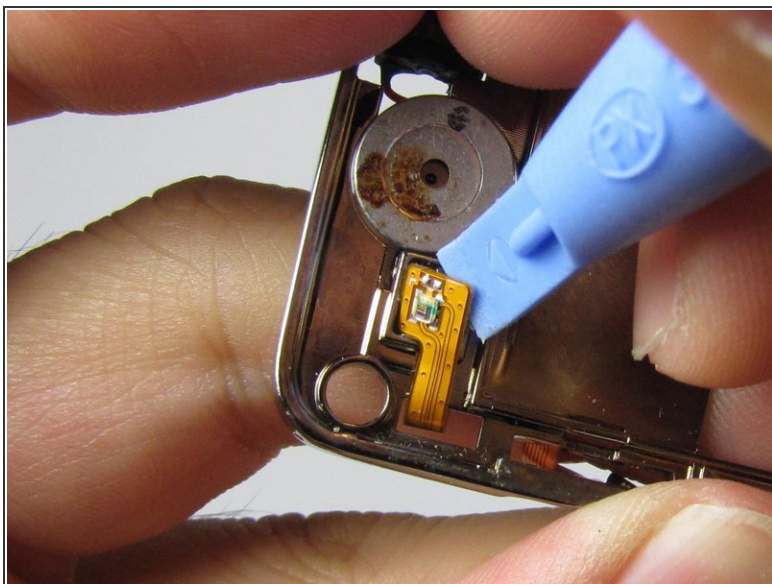
## Step 18



- Using the opening tool, pry the orange connector pad that is securing the earpiece to the frame, away from the device, until it detaches.

**i** It may be necessary to apply more force to remove the pad because it is taped to the frame.

## Step 19



- Pry the rest of the orange connector pad --on the opposite side of the device-- away from the frame, and carefully remove the entire earpiece.



To re-assemble your device, follow these instructions in reverse order.