



# Sony SRS-X3 Auxiliary Port Replacement

We will be replacing the auxiliary port on the Sony SRS-X3 portable bluetooth speaker

Written By: Andrew Troyer





## TOOLS:

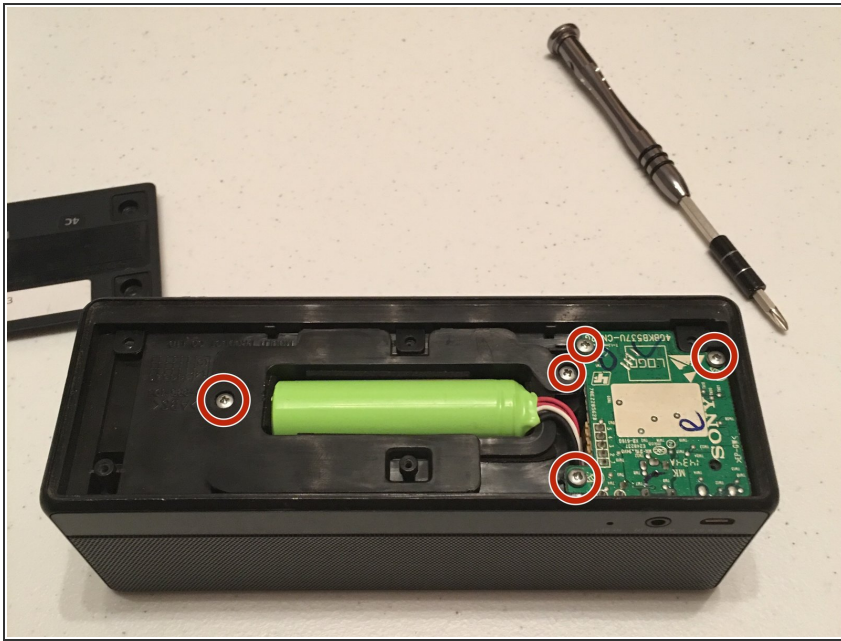
- [Phillips #1 Screwdriver](#) (1)
-

## Step 1 — Auxiliary Port Replacement



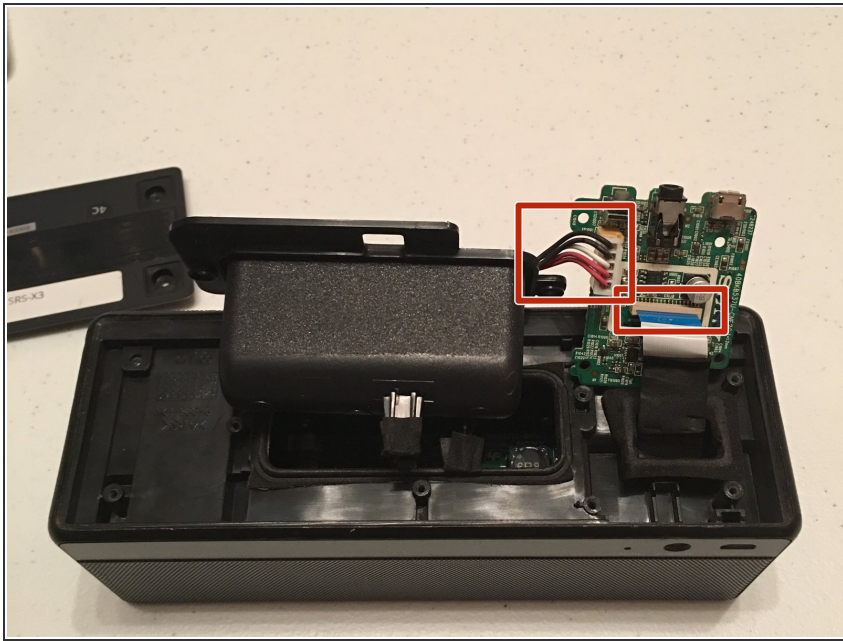
- Remove the 6 philips head screws using the screwdriver and the PH1 bit

## Step 2



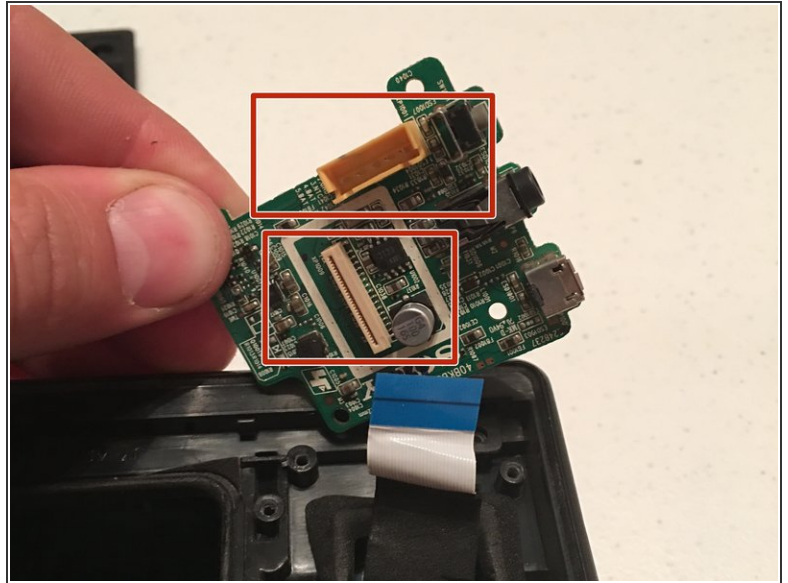
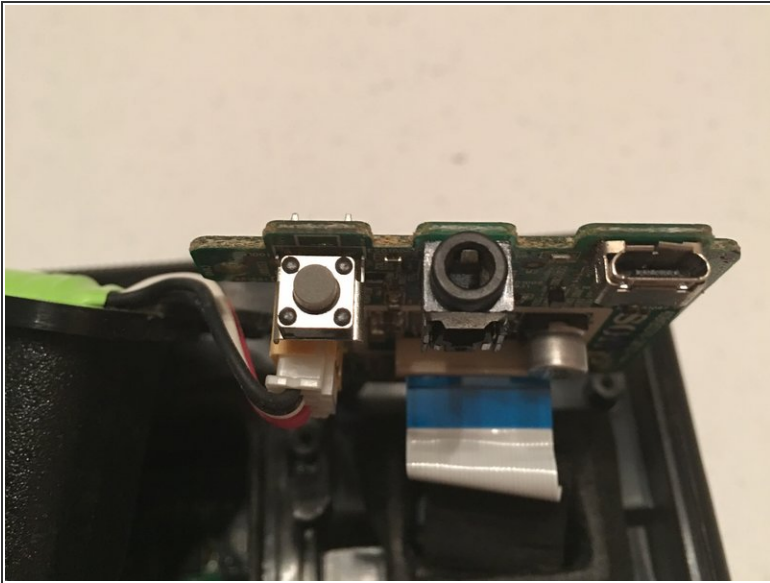
- Remove 5 philips head speakers holding in the battery and the green circuit board. 2 screws holding in the battery and 3 holding the circuit board.

## Step 3



- Pick out the battery pack and the green circuit board so that you can see the ribbon wire and the wire running from the battery pack to the circuit board.

## Step 4



- Remove the ribbon wire and the connector coming from the battery pack to the circuit board.
- These connectors will not easily pull out, so you might have to give them a tug. They aren't very fragile, so don't worry about shredding them.
- After this step, simply insert a new circuit board and you're done! Reassemble the speaker and start jamming!

To reassemble your device, follow these instructions in reverse order.