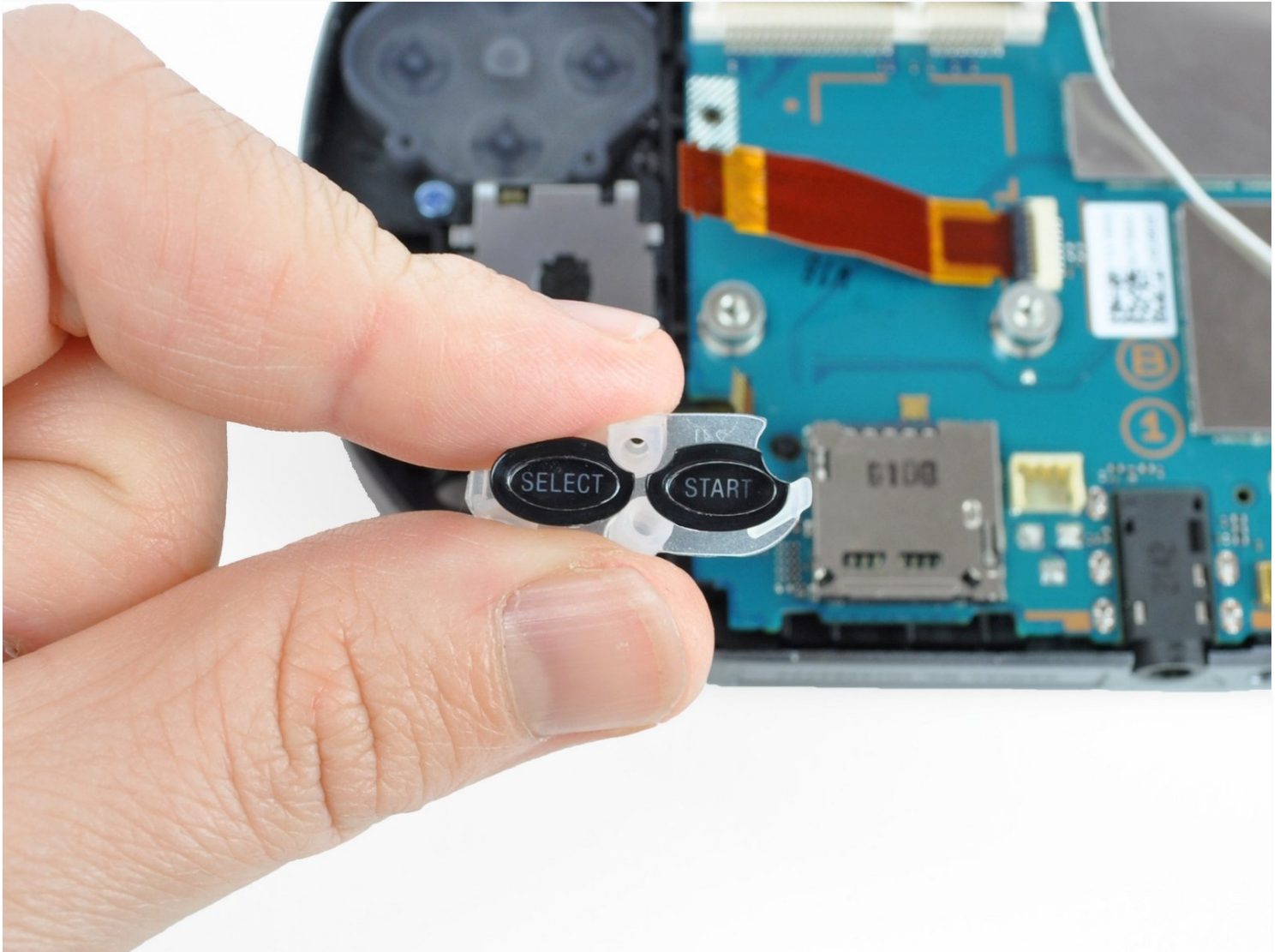




# PlayStation Vita Start/Select Button Replacement

This guide takes you through the process of...

Written By: Brittany McCrigler



# INTRODUCTION

This guide takes you through the process of installing the start/select button on the PlayStation Vita.

## 🔧 TOOLS:

Phillips #00 Screwdriver (1)  
iFixit Opening Tool (1)  
Spudger (1)  
Tweezers (1)

## ⚙️ PARTS:

PlayStation Vita Start/Select Button Covers (1)

## Step 1 — Case Separation



⚠️ Power off and remove the memory card.

- Using a Phillips #00 screwdriver, remove the four 6.4mm screws on the back casing.

## Step 2



- Using your fingernail or a spudger, pry open the accessory port cover on the top of the device.
- Using a Phillips #00 screwdriver, remove the two 5.4mm screws hidden beneath the accessory port cover.

## Step 3



- Remove the two 5.4mm Phillips #00 screws on the bottom of the device near the charging port.



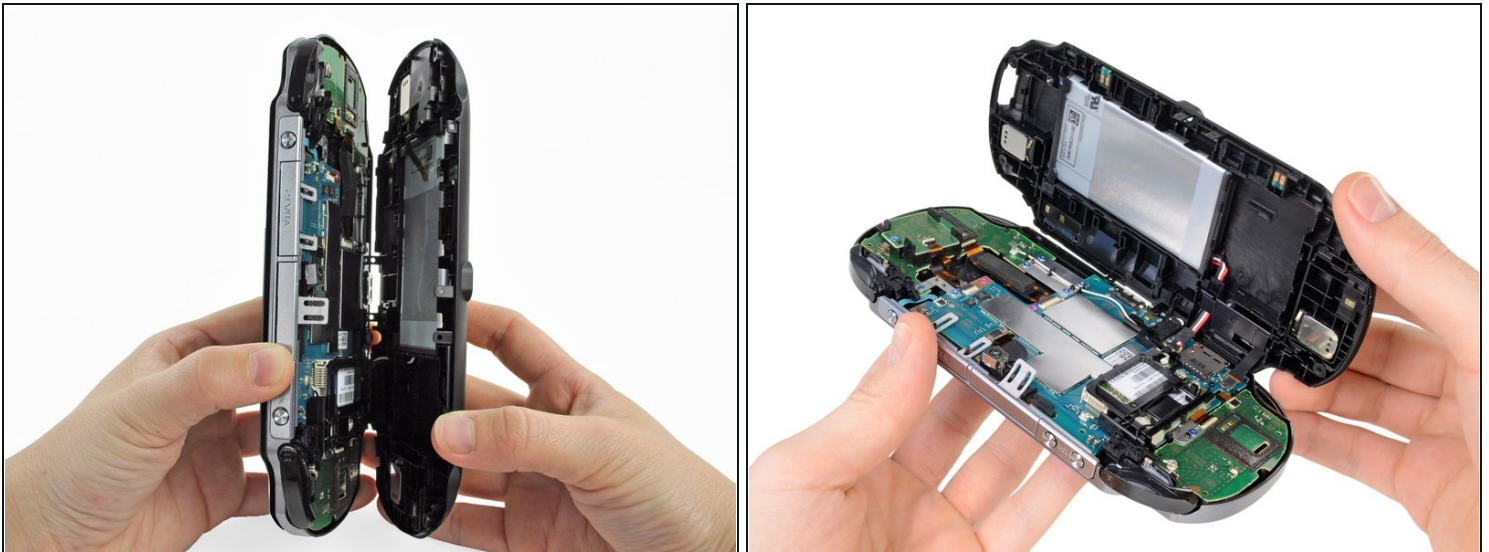
## Step 4



- Beginning at the sides of the device, use a plastic opening tool to separate the front and rear cases.
- Continue working your way around the device gently prying it open.

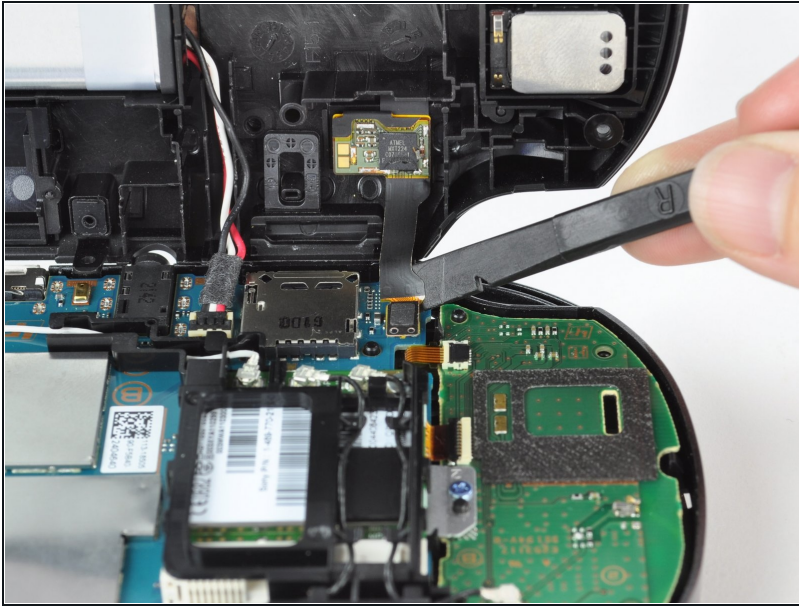
⚠ There are still wires holding the front and rear cases together. You may damage the connections if you yank the cases completely apart.

## Step 5



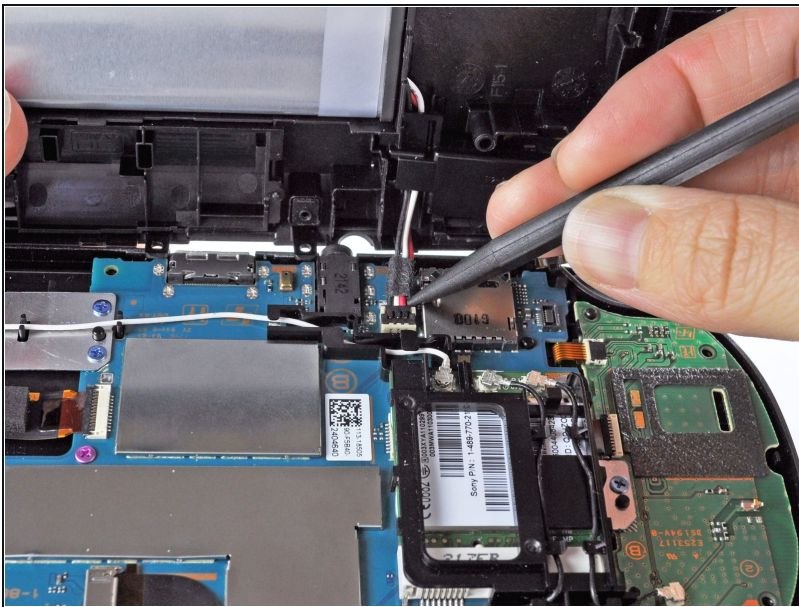
- Gently separate the two cases, minding the battery and the touch screen controller connectors holding the two cases together.

## Step 6



- Using a spudger, free the touch screen controller flex cable by gently prying up the connection.

## Step 7



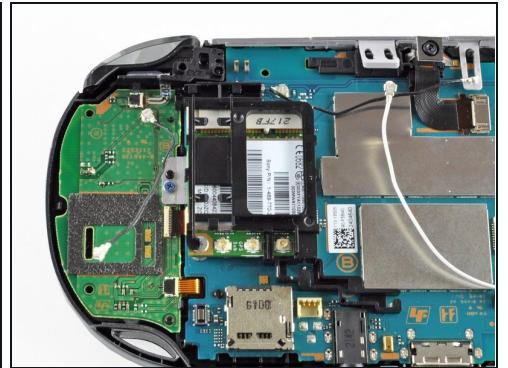
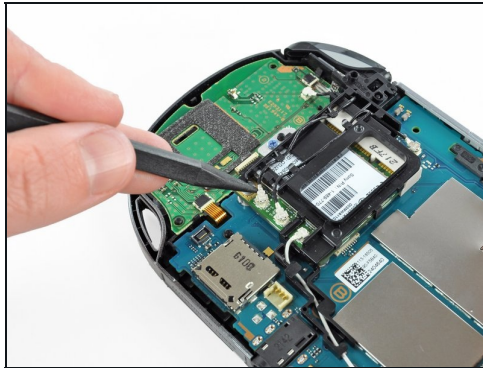
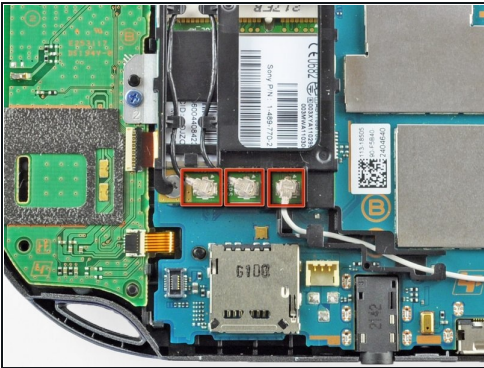
- Free the battery cable by gently prying up on the connection with a spudger.

## Step 8



- Separate the front and rear cases.

## Step 9 — Wireless Card



- Using the pointy end of the spudger, disconnect the three antenna cable connectors on top of the wireless card.
- Deroute the antenna cables so that they are out of the wireless card casing. Rest the wires out of the way.

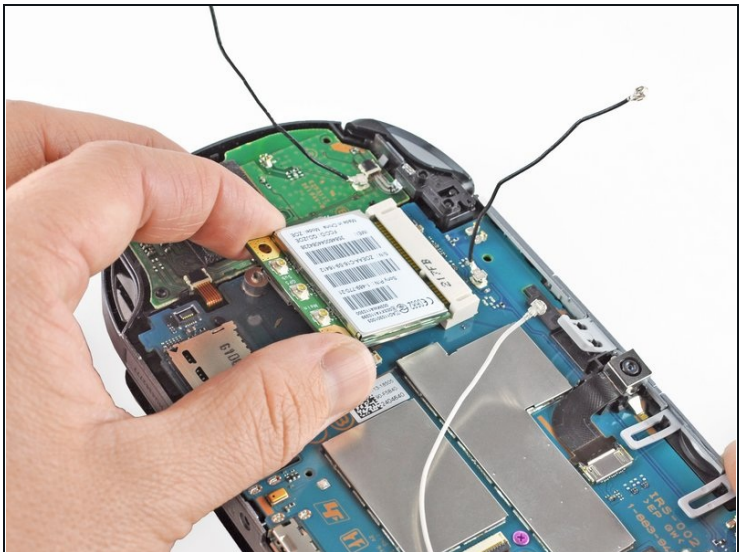
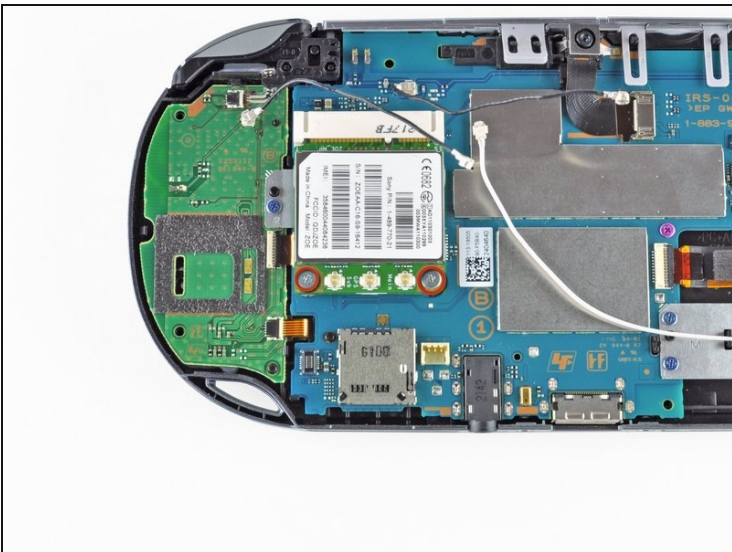


## Step 10



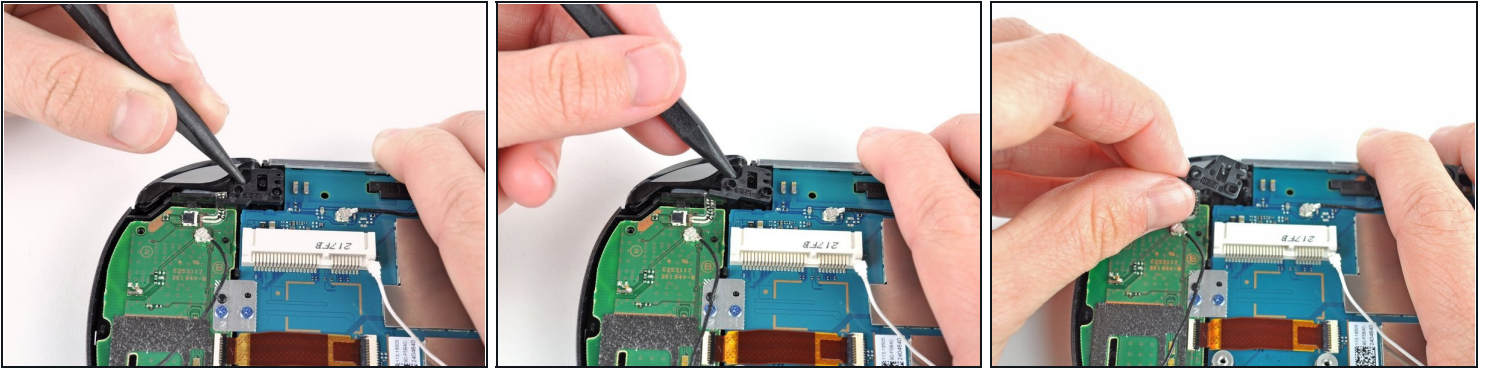
- Hook the spudger beneath the tab on the wireless card casing and release the tab.
- Peel up and remove the wireless card casing.

## Step 11



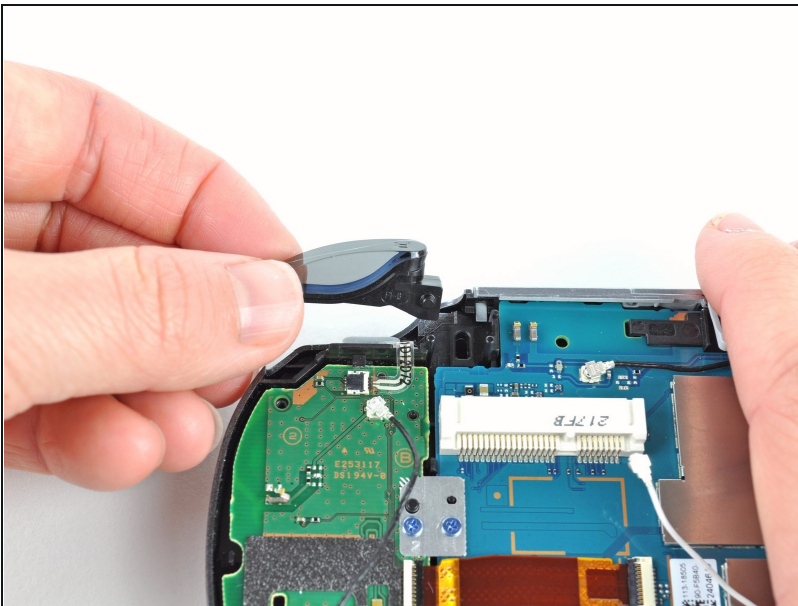
- Remove the two 4.4mm Phillips #00 screws on the wireless card.
- ① The wireless card will naturally pop out at an angle.
- Pull out the wireless card.

## Step 12 — Right Shoulder Button



- Pry up the right shoulder button casing with a spudger and set it aside.

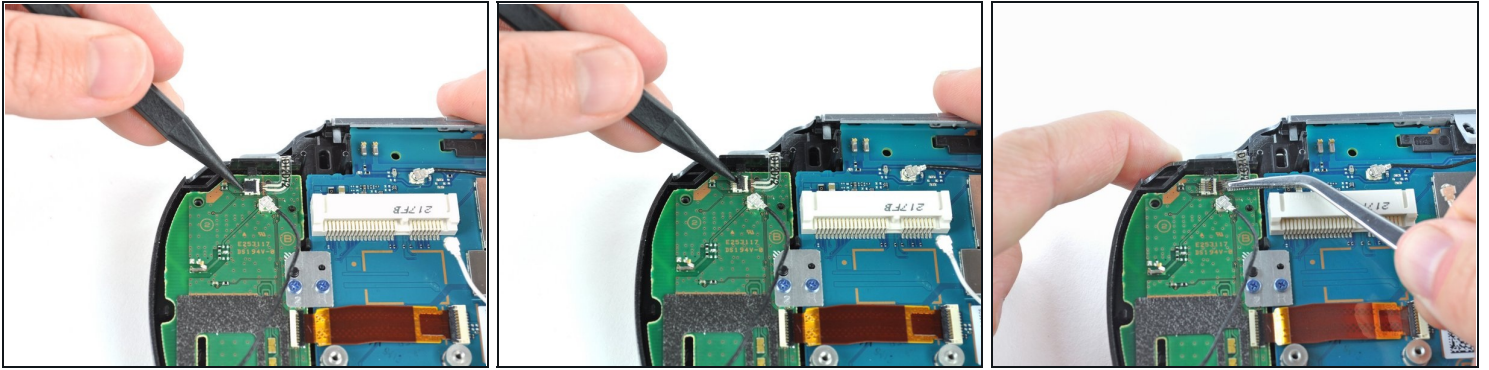
## Step 13



- Remove the translucent, plastic right shoulder button cover.

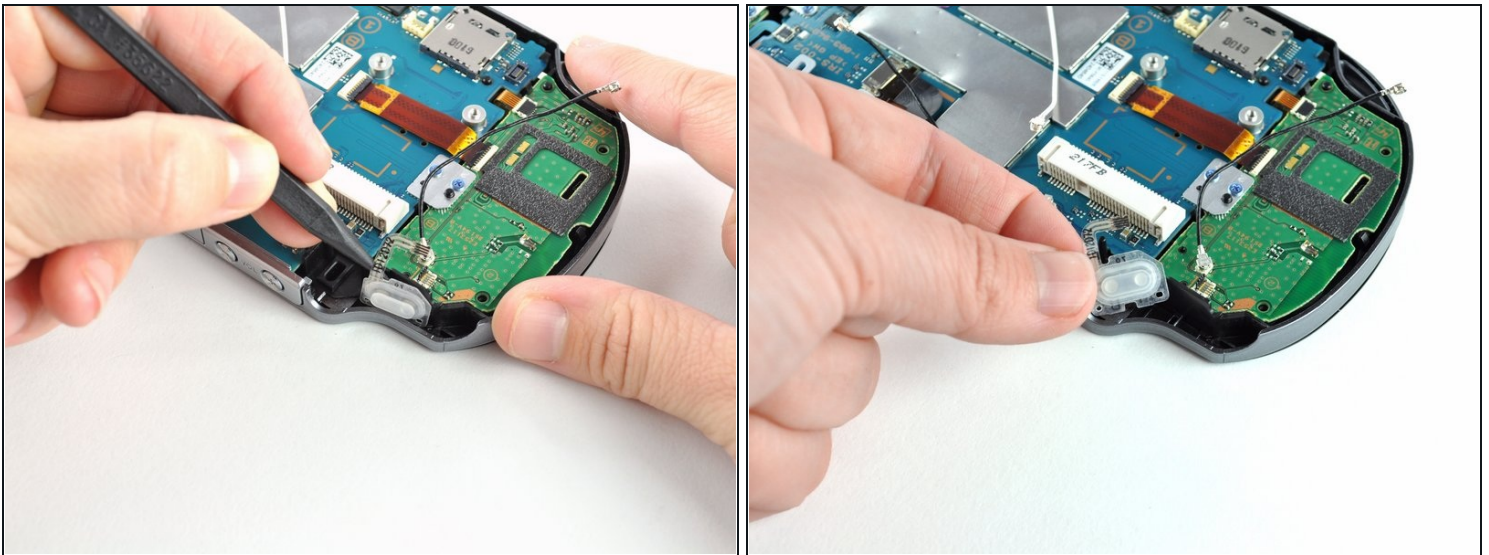


## Step 14



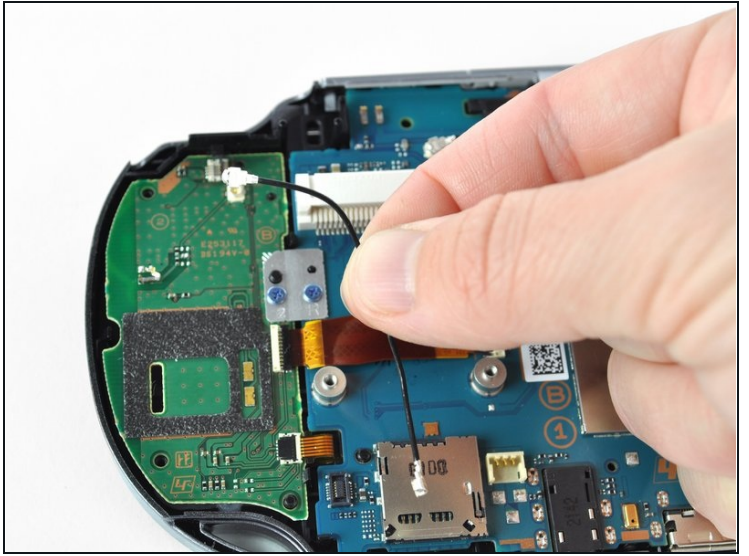
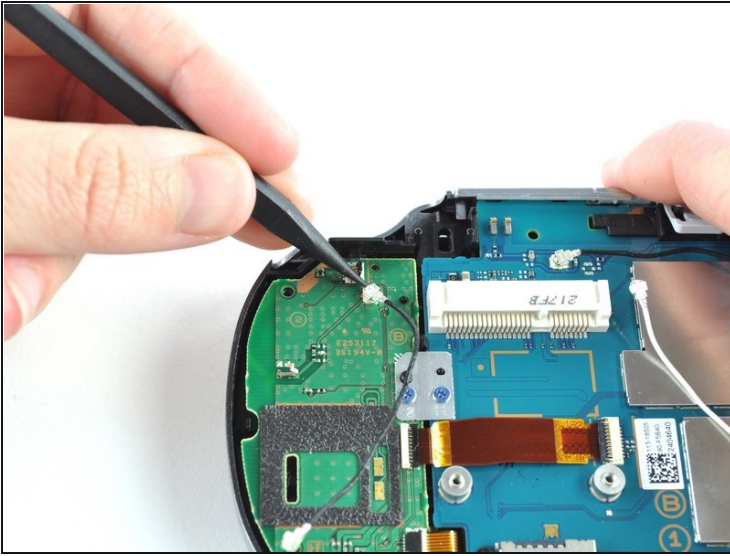
- Release the right shoulder button flex cable socket by using a spudger to gently pry open the tab.
- Using [tweezers](#), slide the flex cable out of the socket.

## Step 15



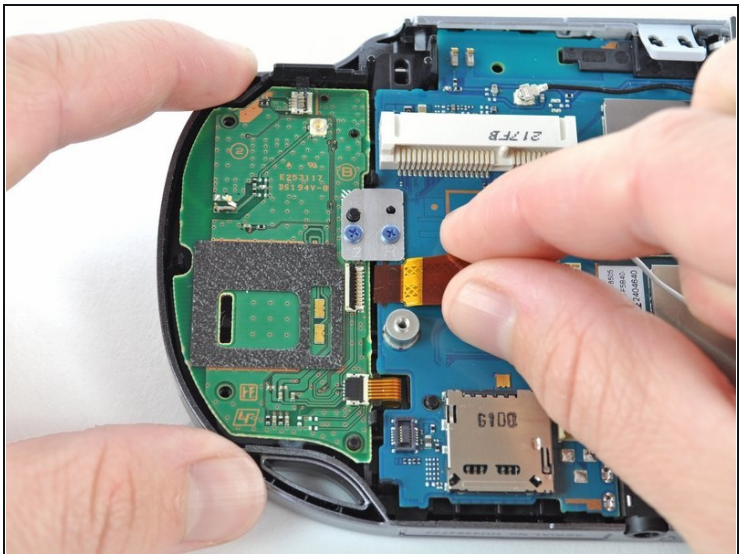
- Using a spudger, gently peel up the right shoulder button from the light adhesive connecting it to casing.

## Step 16 — Right Button Board



- Using the pointy end of a spudger, detach the antenna cable on the right button board.
- Remove the antenna cable.

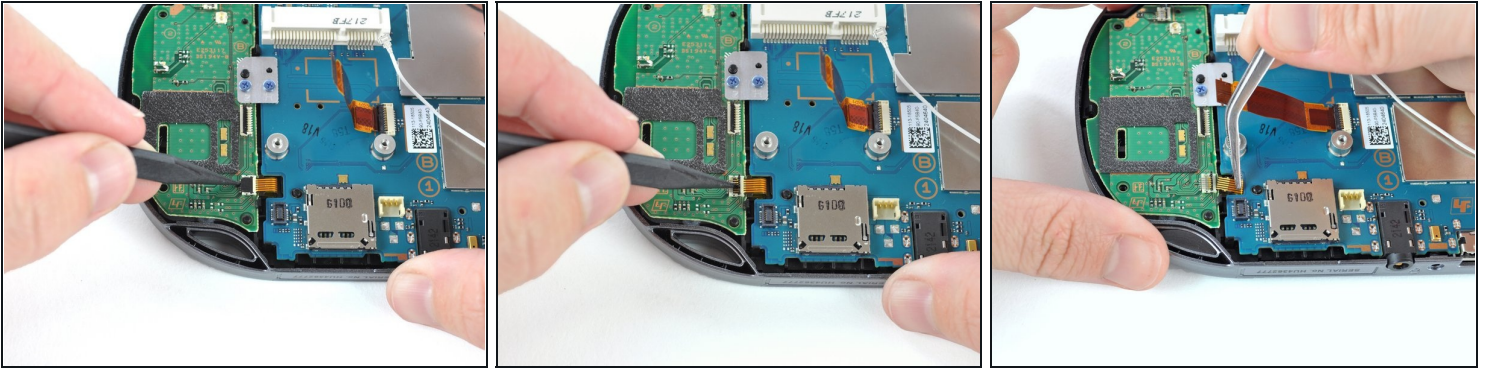
## Step 17



- Using a spudger, pry up and release the ZIF socket on the right button board.
- Gently pull the flex cable out of the socket. Rest the flex cable out of the way.

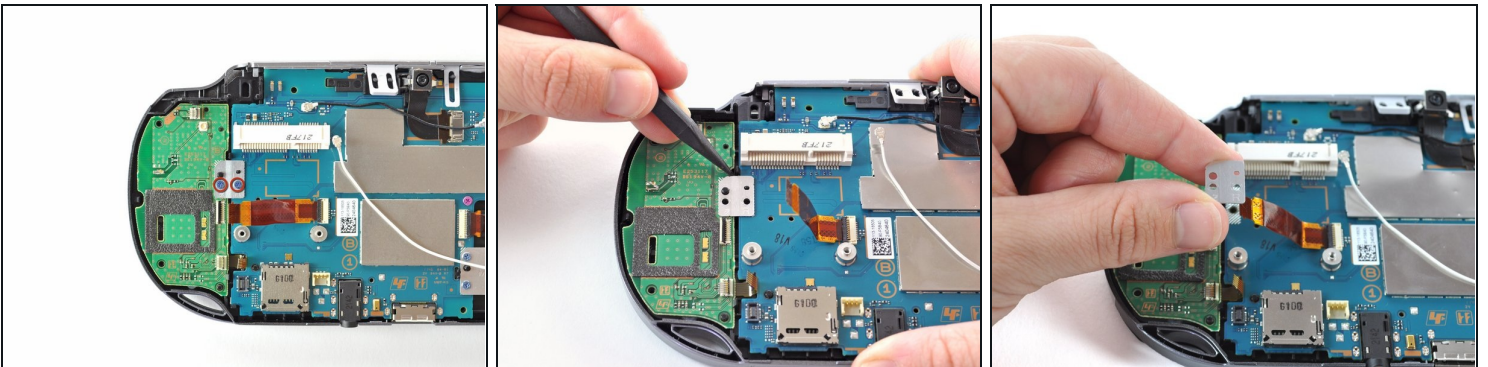


## Step 18



- Release the tab on the small flex cable socket by prying up the tab with a spudger.
- Using [tweezers](#), gently pull the flex cable out of the socket. Rest the flex cable out of the way.

## Step 19



- Remove the two 5.0mm Phillips #00 screws from the metal bracket securing the right button board to the motherboard.
- Remove the metal bracket, using a spudger as necessary to lift it out.

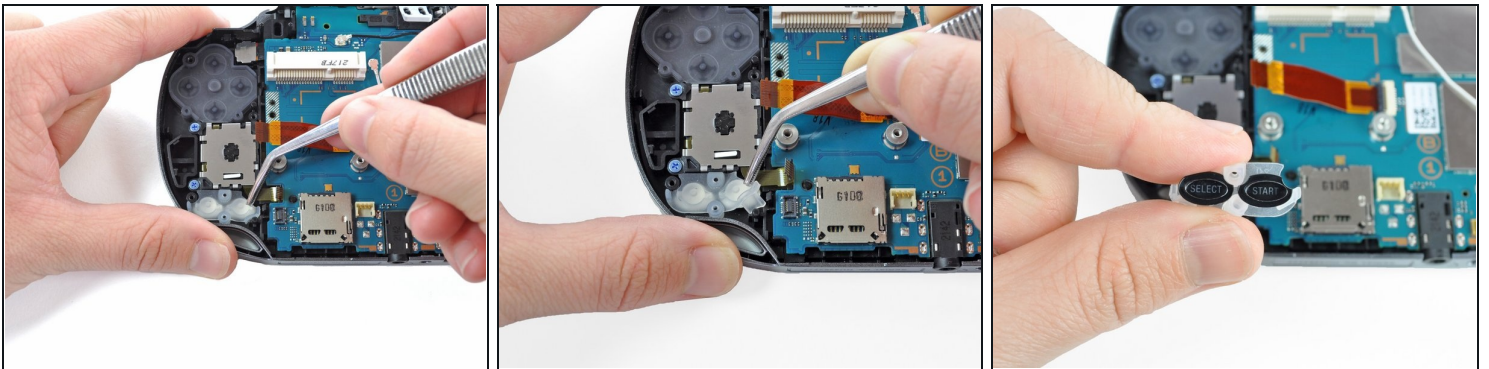


## Step 20



- Use a spudger to free the right button board by prying up from the bottom right corner of board.
- Gently lift the right button board out.

## Step 21 — Start/Select Button



- Using [tweezers](#), peel the start/select button off the back case.

To reassemble your device, follow these instructions in reverse order.