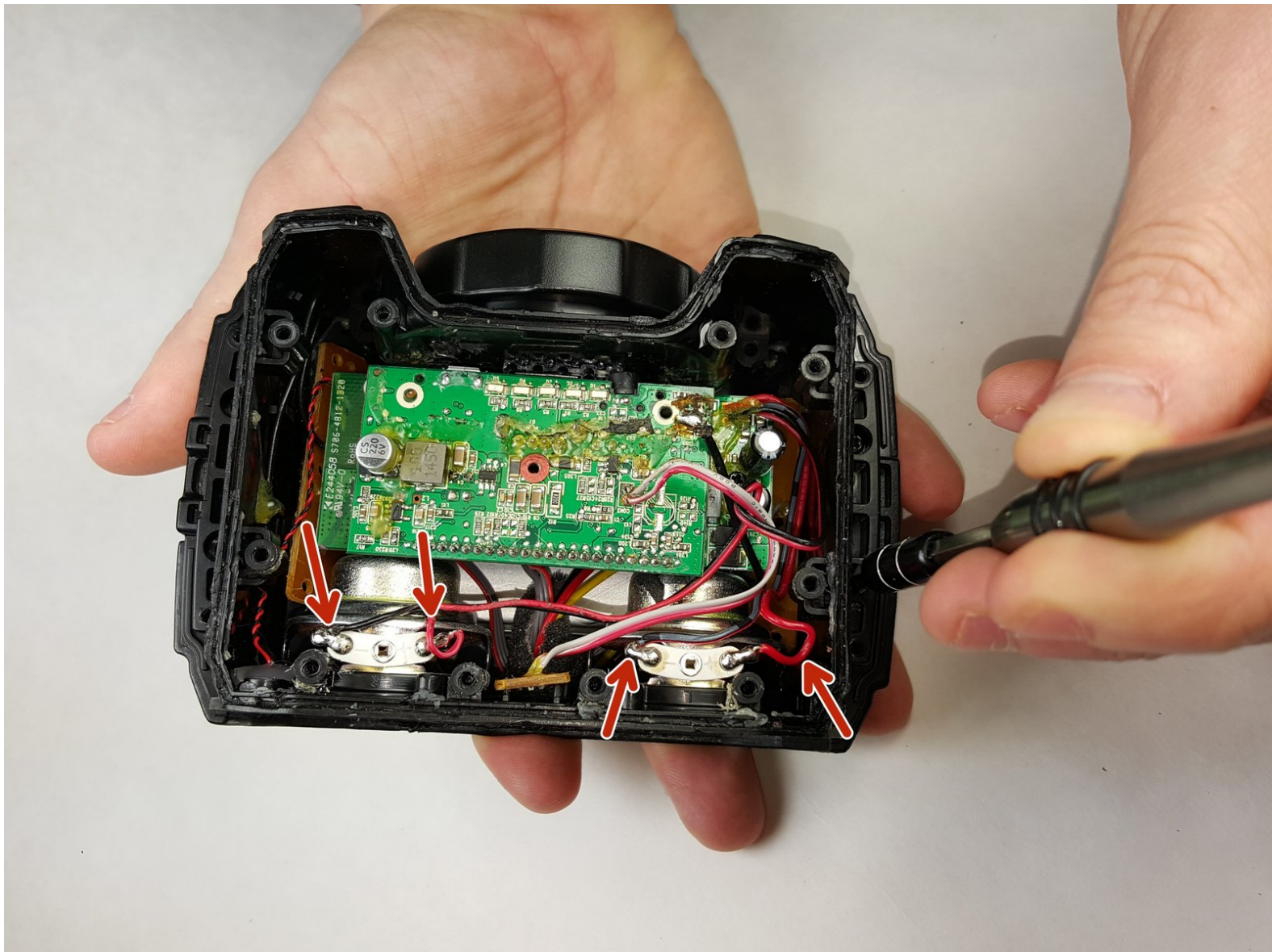




Braven BRV-1s Speaker Wire Replacement

This guide will show you how to replace and solder damage speaker wires.

Written By: Josh Matthias



INTRODUCTION

This guide will help walk you through the process of identifying the speaker wires for your Braven BRV-1s. If your device isn't working, despite having power and being properly connected, you could have damaged or a disconnected speaker wire. This guide will show you how to access these speaker wires and how to replace and solder them back into their proper place.



TOOLS:

- [64 Bit Driver Kit](#) (1)
- [Metal Spudger](#) (1)
- [Soldering Iron](#) (1)
- [Wire Stripping/Crimping Tool](#) (1)
- [Heat Gun](#) (1)

Step 1 — Outer Casing



- To remove the outer case, remove 4 phillips screws (Phillips #00 headtype, 9.3mm long)

Step 2



- Using a metal spudger, gently pry the side of the defective case.

Step 3



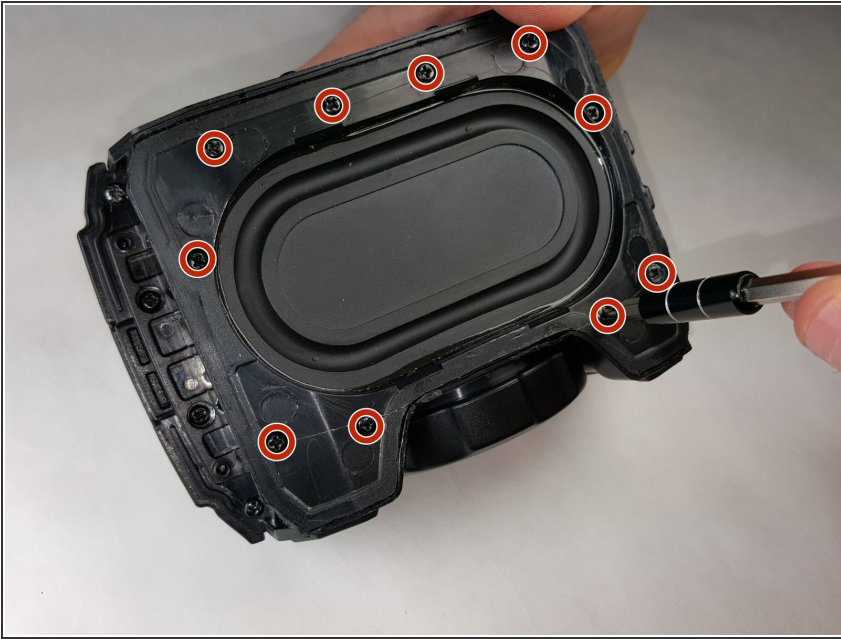
- Still using the metal spudger, continue to work your way around the outer case.

Step 4



- Remove the broken outer case. Replace with used/new out case.
- ⓘ Note that unless properly sealed with glue, the speaker will no longer be water resistant.

Step 5 — Speaker Cone



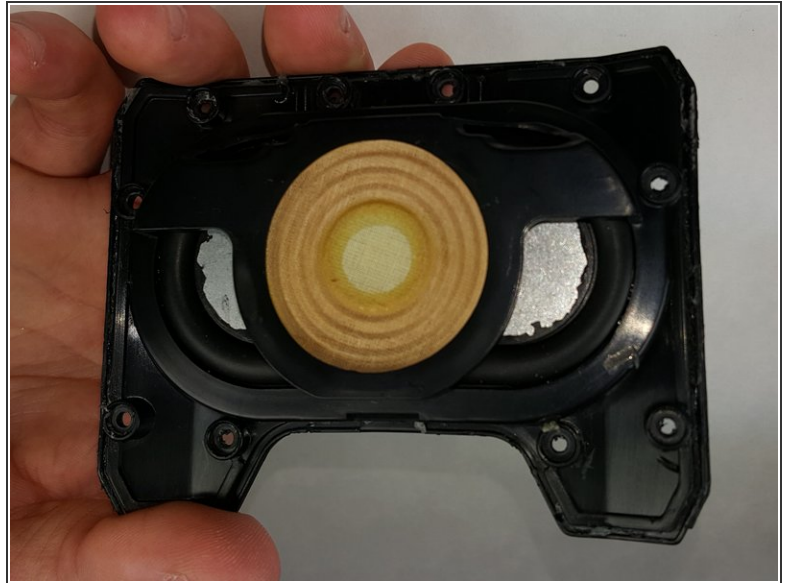
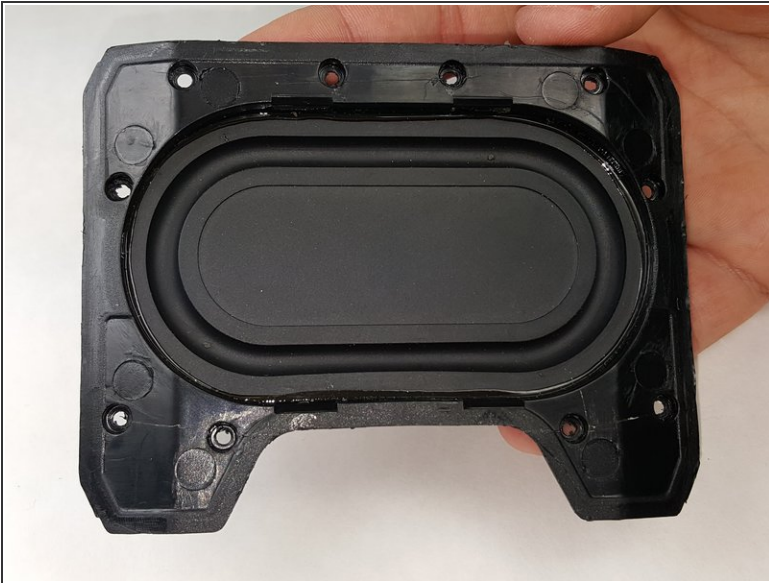
- To remove the speaker cone plate, remove 10 phillips screws (Phillips #00 headtype, 9.3mm long)

Step 6



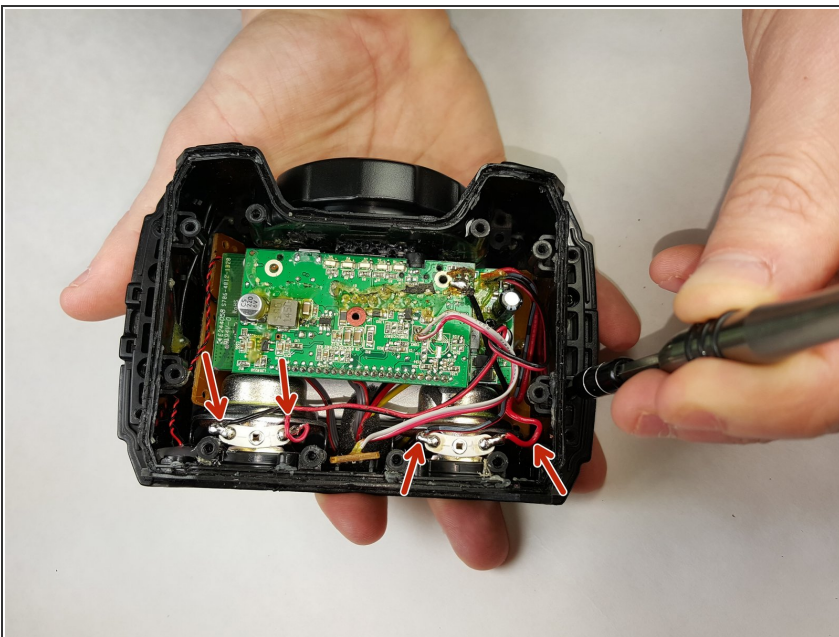
- Using a metal spudger, gently pry the side of the defective speaker cone plate.
- Remember to pry all around the side of the speaker cone plate.
- Keep in mind that the adhesive will make it difficult to pry the plate off. To loosen the adhesive, heat the plate with a device such as a hair dryer.

Step 7



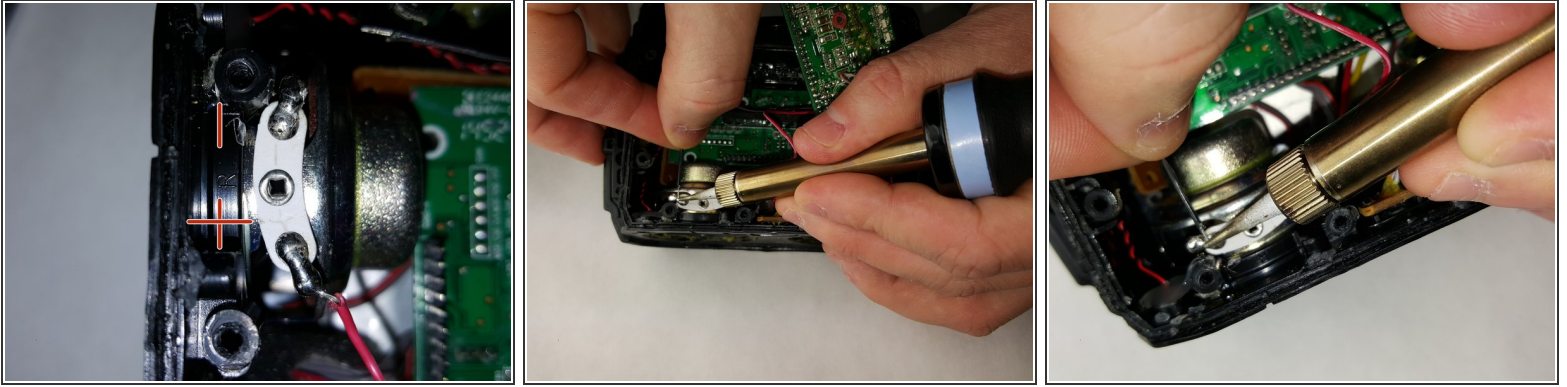
- Remove the broken speaker cone plate. Replace with used/new out plate.

Step 8 — Speaker Wire



- Once outer cover and speak cone/cover are removed, locate speaker wires
- Each speaker has two wires: 1 red wire, 1 black wire
- Check each wire for damage or if it has been disconnected from the speaker terminal

Step 9



- Once locating the damaged or disconnected wire, locate the proper speaker terminal to solder the wire to
- On each speaker terminal you can see the (+) and a (-) next to each terminal. The black wire correlates to the (-) and the red wire correlates to the (+)
- If necessary, use wire strippers to strip off some of the plastic casing at the end wire to expose the metal fibers
- Using a soldering iron, carefully solder wire back to it's proper place on the speaker terminal

To reassemble your device, follow these instructions in reverse order. You may need to refer to previous guides.