



HP Compaq Presario V3000 Keyboard Replacement

Replace the keyboard on your laptop.

Written By: McKenzie Coleman



INTRODUCTION

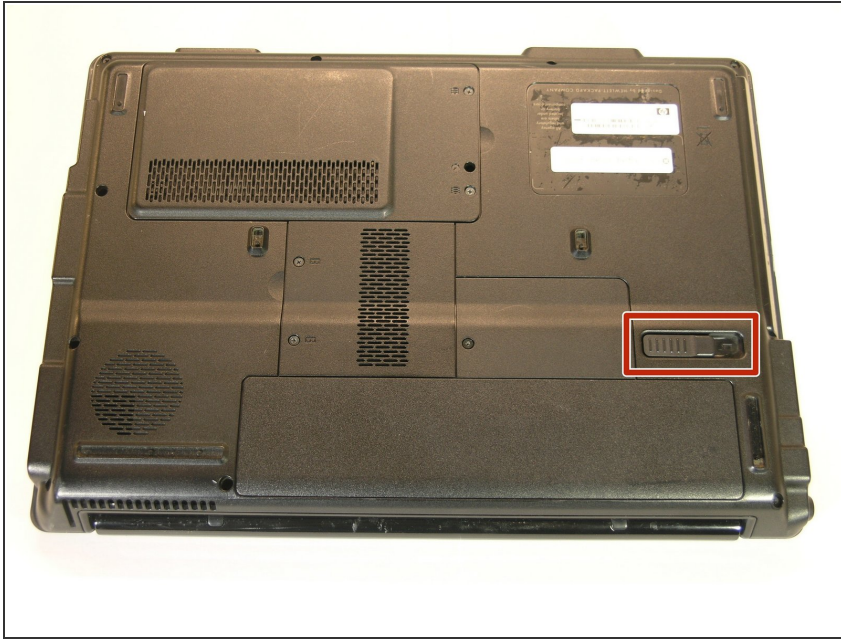
This guide demonstrates how to take out the keyboard from your laptop and replace it with a new one.



TOOLS:

- [Phillips #1 Screwdriver](#) (1)
 - [Tweezers](#) (1)
-

Step 1 — Battery



- Make sure the laptop is powered OFF. Gently turn the laptop over and place it on a flat surface.
- ⚠ The battery may be warm or even HOT to the touch.
- Locate the battery **EJECT** latch.

Step 2



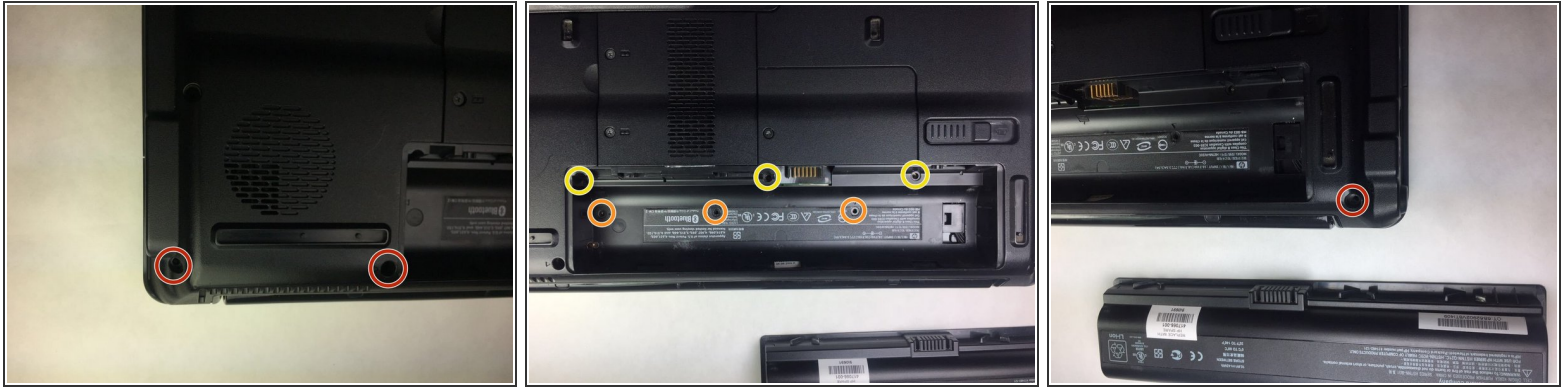
- Grab the laptop firmly on the side and using your thumb, press the eject latch towards the **OUTER** edge of the device.
- The battery will be lifted out of the laptop slightly as you press the latch over as far as it will go.
- ☑ When replacing the battery, you **DO NOT** need to adjust the latch. Once the battery is replaced, snap it into place and the latch will return to normal.

Step 3



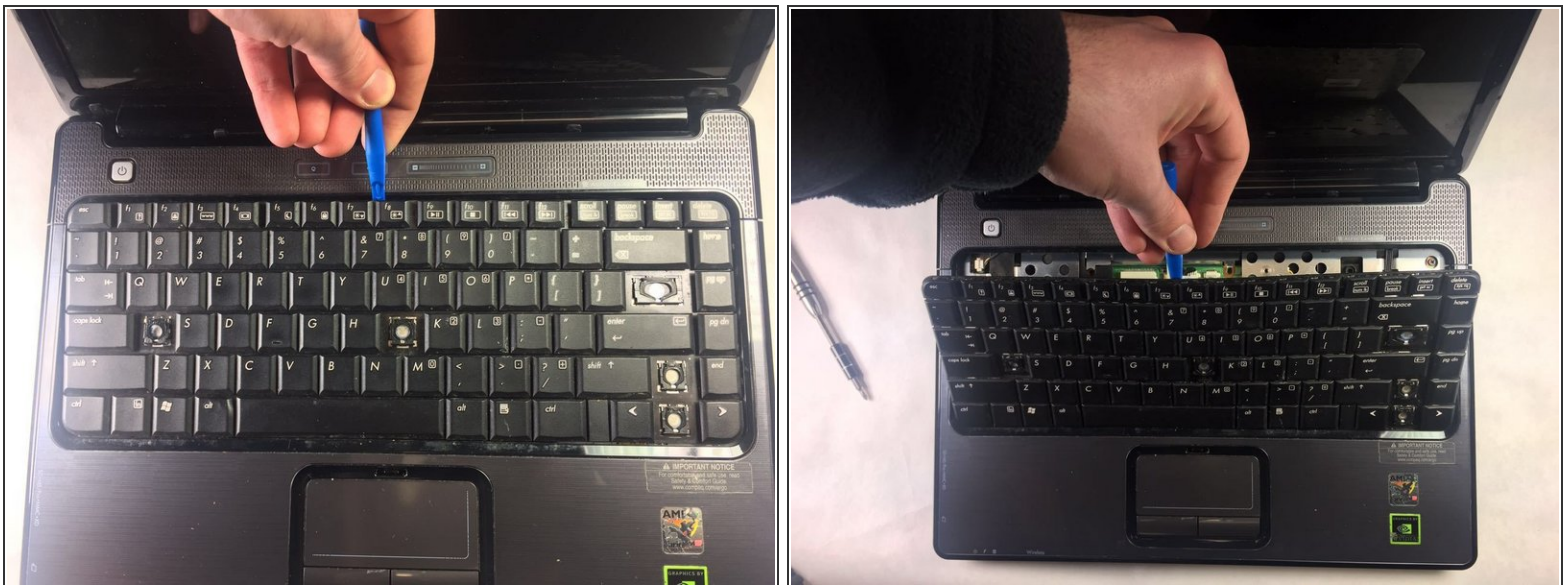
- Pull the battery up and towards you to remove it from the laptop chassis.
- Once the battery is out, you will be able to check the battery label for the replacement part number.
- ⓘ The part number is needed when purchasing a new battery.

Step 4 — Keyboard



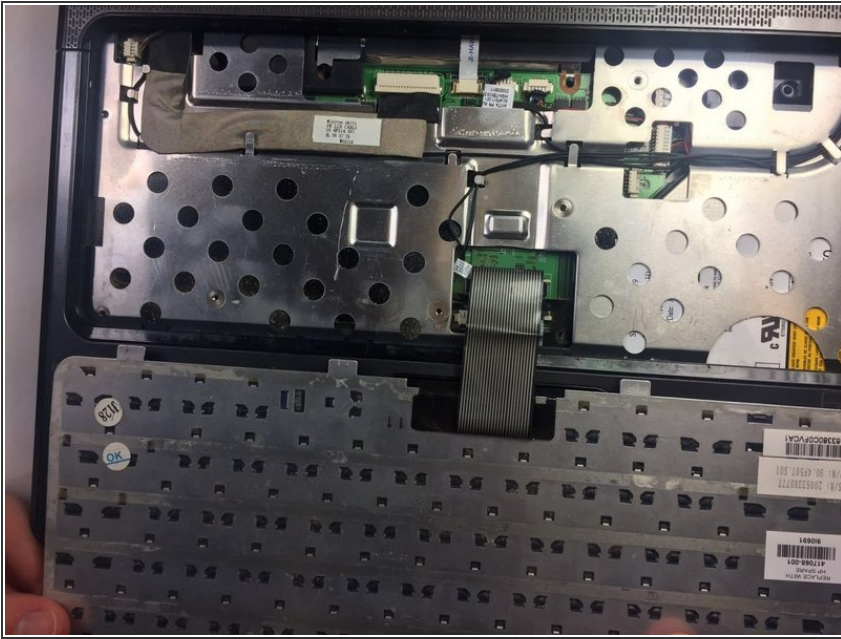
- Use a Phillip's #00 screwdriver to remove all of the circled screws. Apply moderate pressure to each screw to avoid stripping it.
- The three screws circled in red are 9mm Phillip's #00 screws.
- The three screws circled in orange are 5mm Phillip's #00 screws.
- The three screws circled in yellow are 6mm Phillip's #00 screws.

Step 5



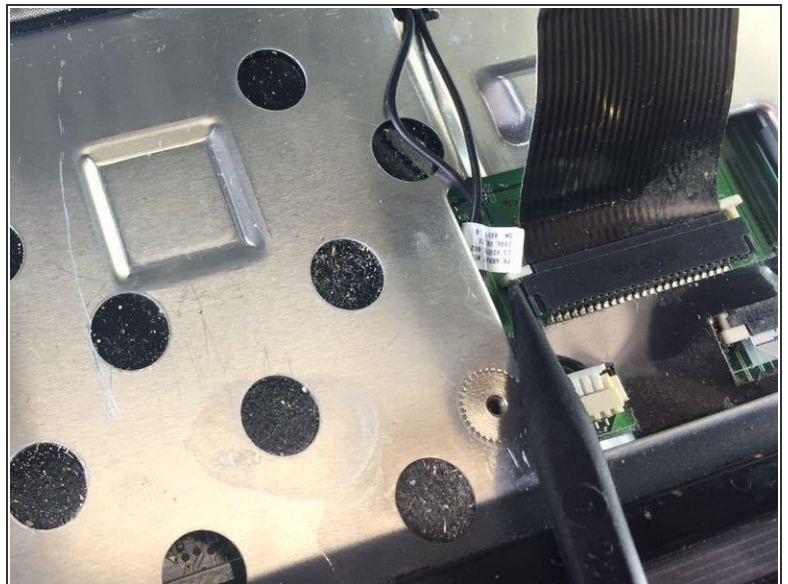
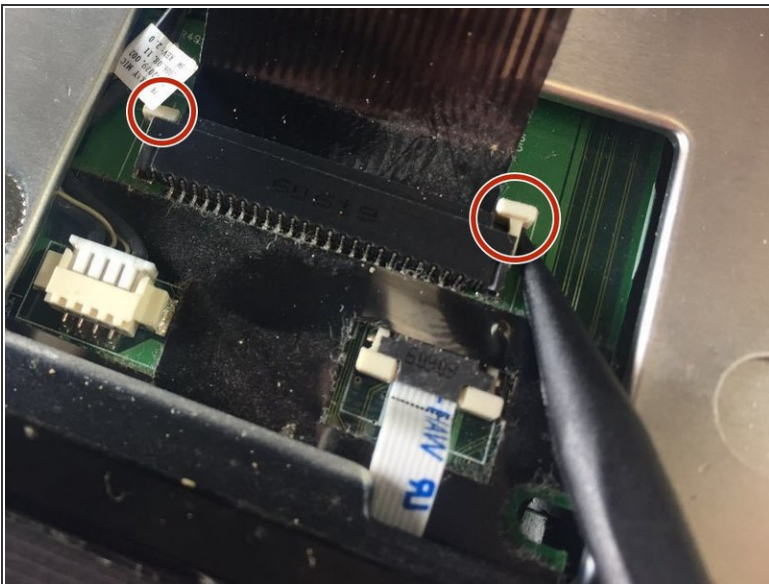
- Insert the rubber spudger gently below the edge of the keyboard.
- Lift the keyboard vertically to detach it from the top assembly.

Step 6



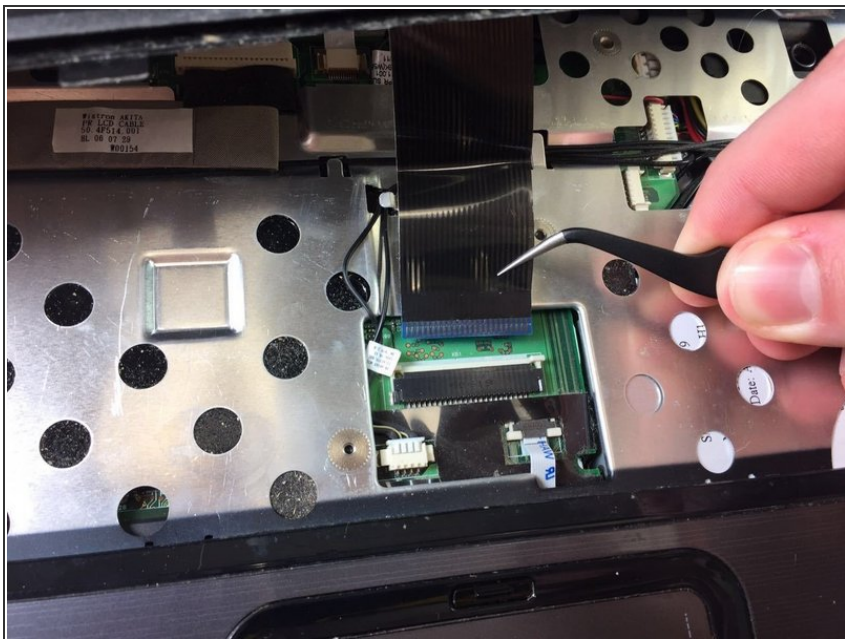
- Flip the keyboard over. It may be easiest to hold it up in order to detach its wire assembly.

Step 7



- Use your plastic spudger to unlock the two white sliding connectors located on the left and right side of the device by gently pushing them out.

Step 8



- With the white sliding connectors unlocked, gently grab the connector power cable and pull it out.

⚠ It should come out very easily; do not force it.

To reassemble your device, follow these instructions in reverse order.