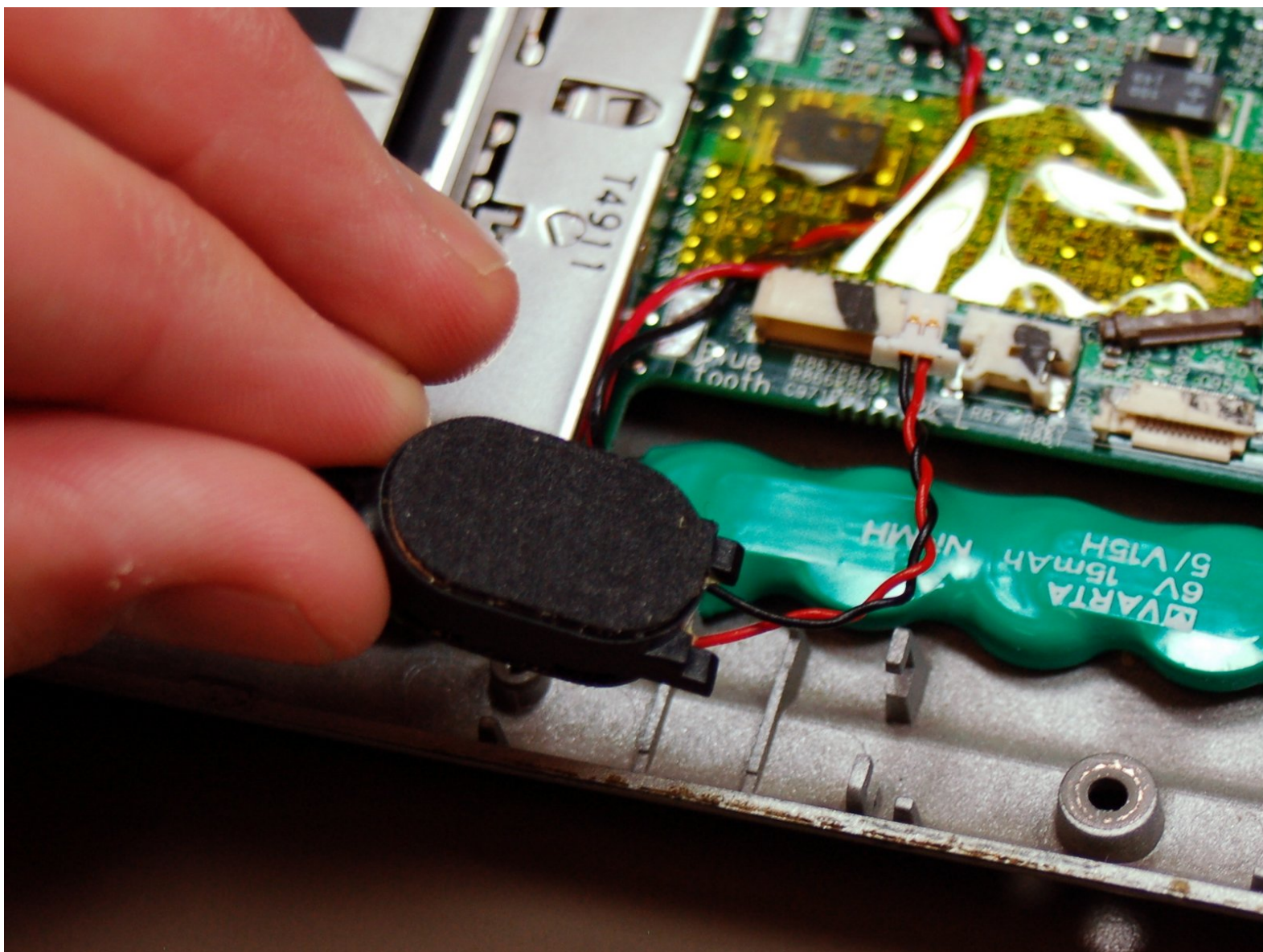




# Dell Latitude X300 Built-In Speakers Replacement

This guide will show you how to remove and replace the built in speakers in the Dell Latitude X300.

Written By: Elai Fresco

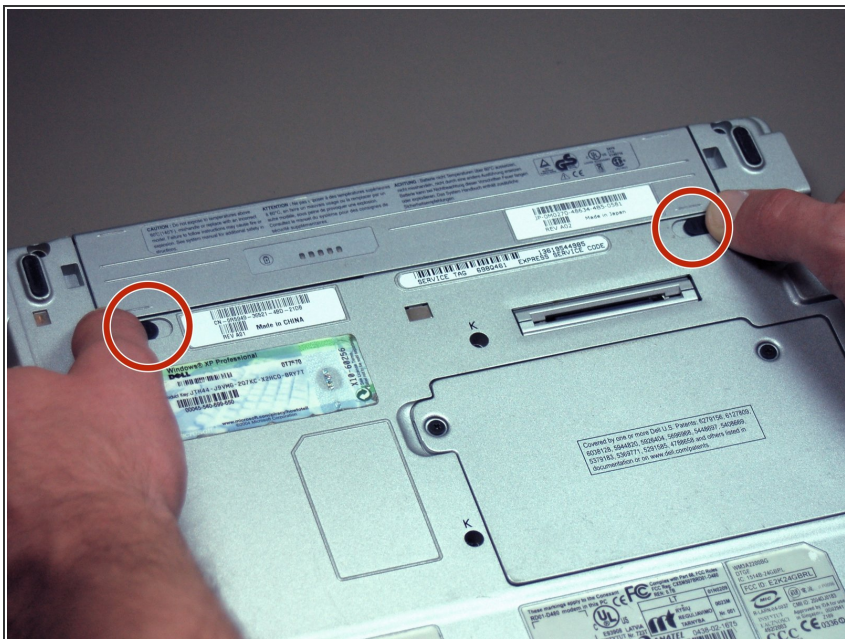





## TOOLS:

- [Phillips #0 Screwdriver](#) (1)
  - [Phillips #00 Screwdriver](#) (1)
-

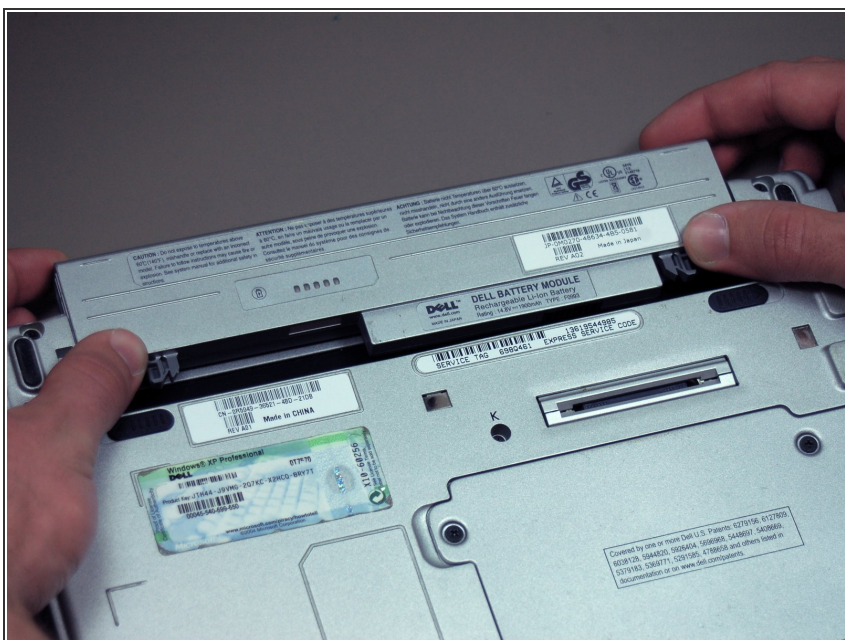
## Step 1 — Battery



 Before removing the battery from the laptop, make sure the power is off.

- Push both battery locking clips outward at the same time.

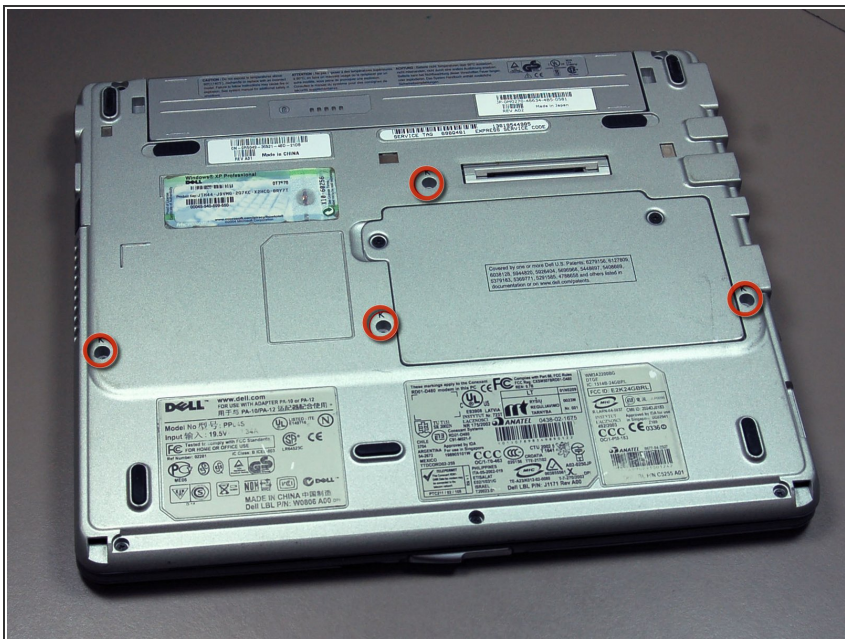
## Step 2



- Slide the battery out of the laptop.



## Step 3 — Keyboard



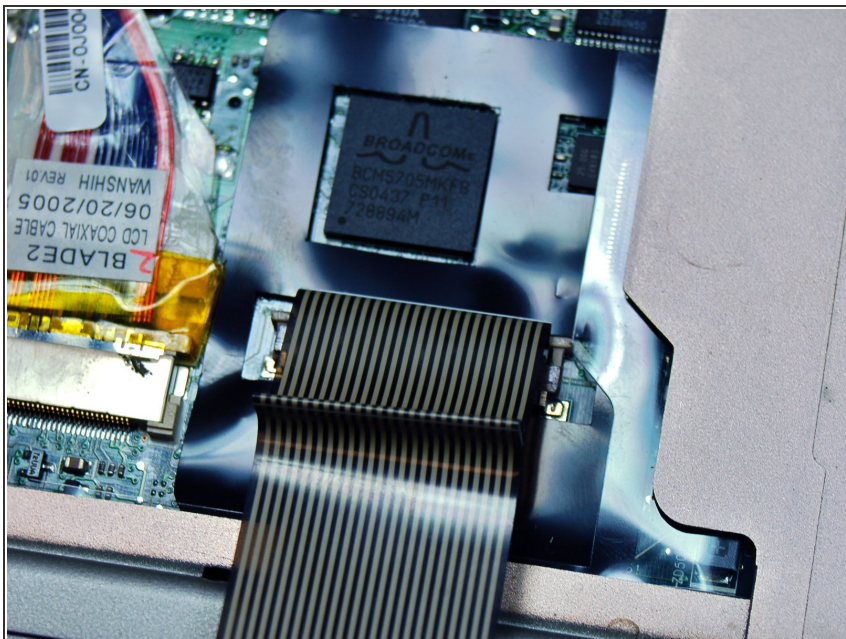
- Remove the four 4 mm Phillips #0 screws from the bottom of the laptop.

## Step 4



- Carefully turn the laptop over and open the screen all the way.
- Locate the slot to remove the keyboard in the lower left hand corner.
- Using a spudger as a lever, insert it into the slot and gently pry up.

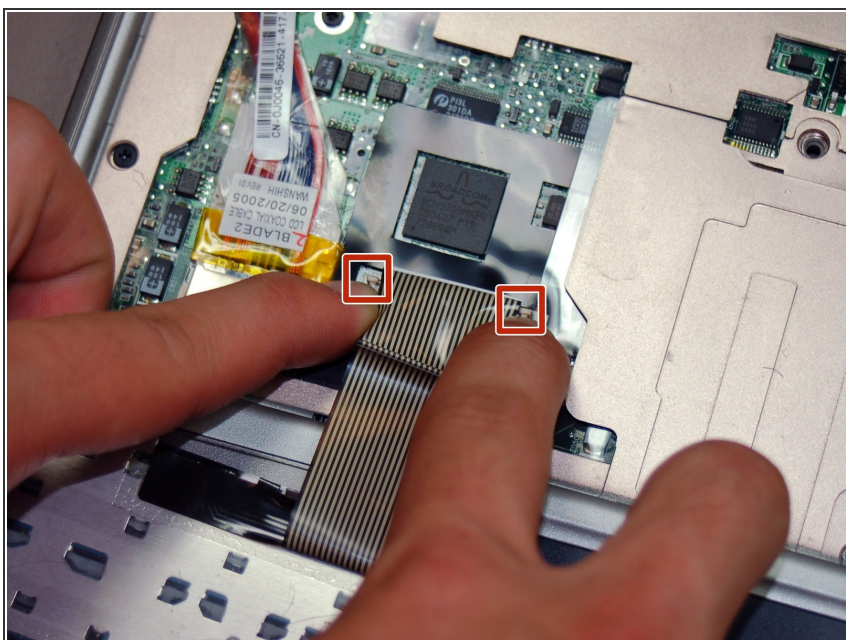
## Step 5



- After the keyboard pops up, pull it away from the screen just enough to release the tabs.

⚠ Don't pull the keyboard out forcefully as there is still a ribbon attached to the laptop.

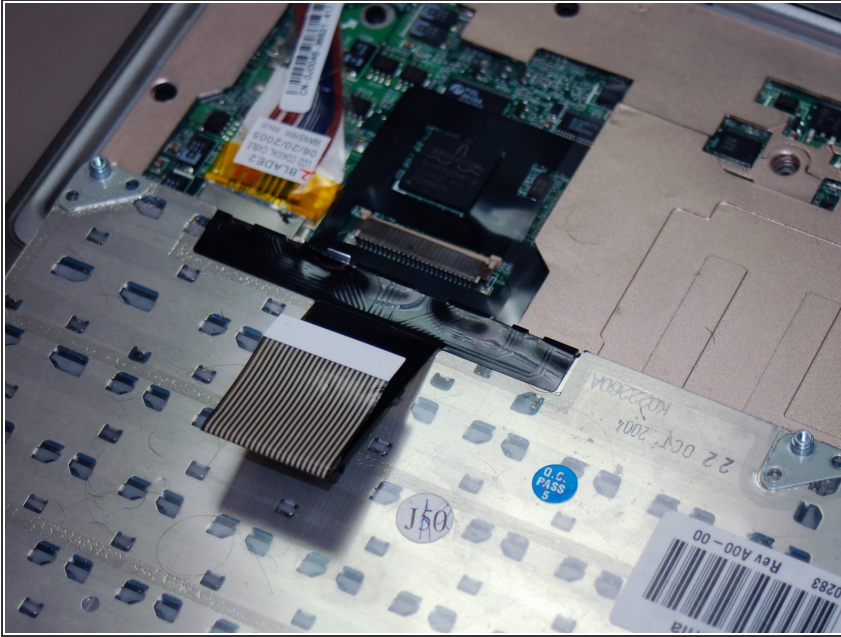
## Step 6



- Unlock the ZIF connector on the computer by pushing the two outside tabs toward the screen.



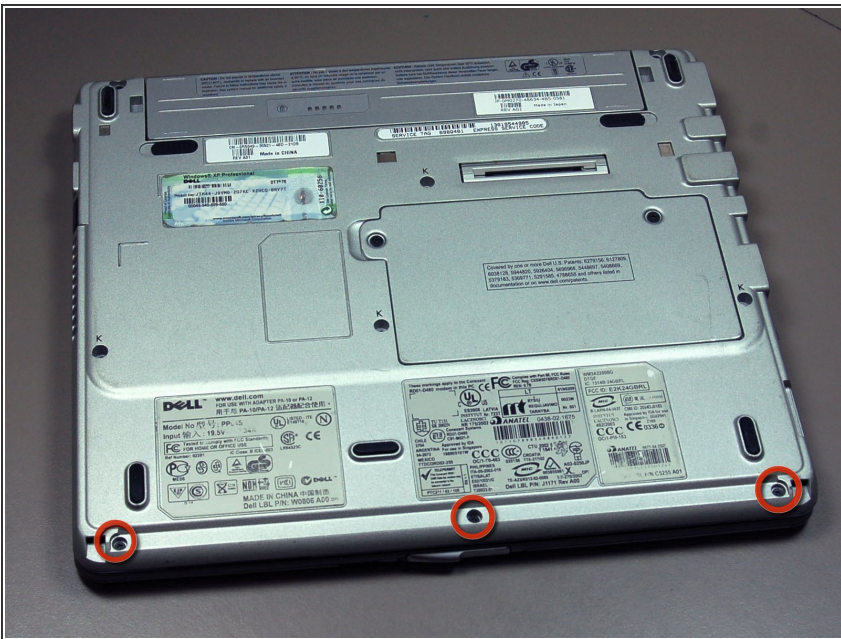
## Step 7



- Remove the flexible ribbon from the ZIF connector.

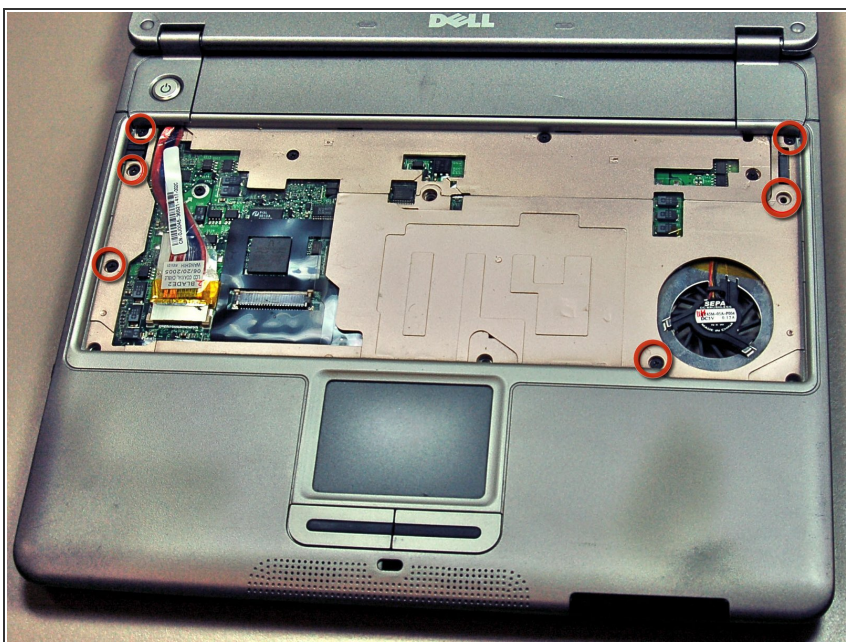
⚠ Do not pull on the ribbon to remove it from the ZIF connector.

## Step 8 — Palm Rest/Track Pad



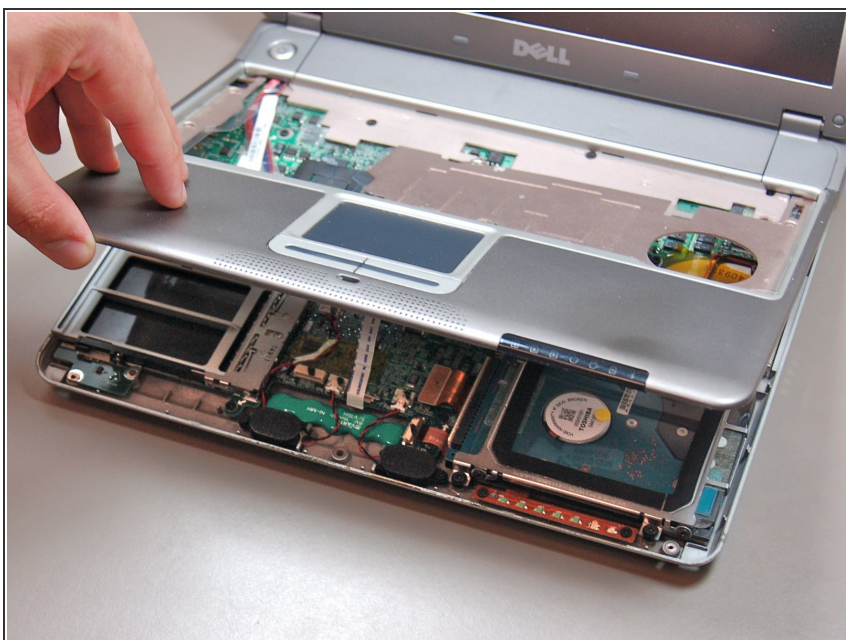
- Position the laptop so that the bottom is facing upward.
- Remove the three 4 mm Phillips #0 screws holding the bottom of the palm rest.

## Step 9



- Return the laptop to proper position and open the screen.
- Remove the six 4 mm Phillips #0 screws holding in the palm rest.

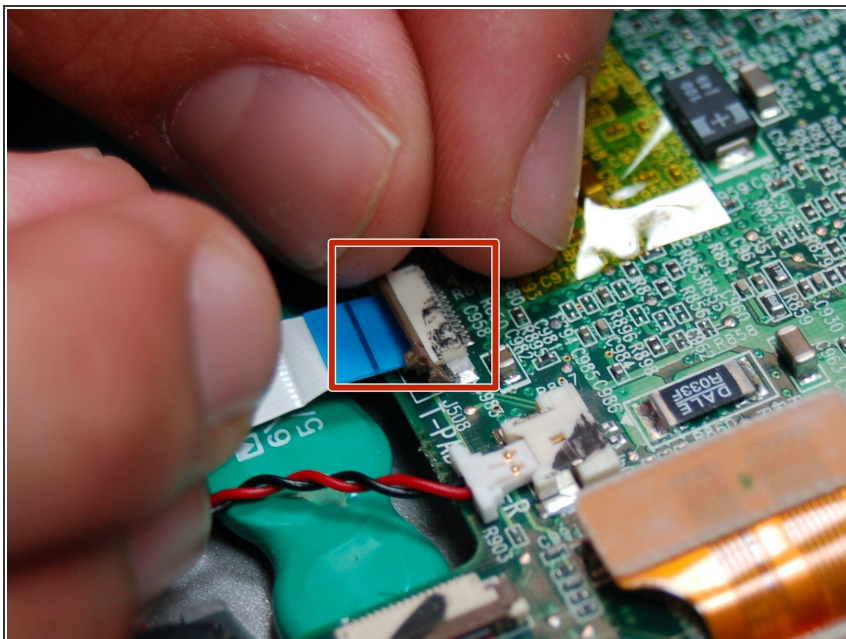
## Step 10



- Gently lift the palm rest and rotate it outward so that the bottom is now facing up.
- ⚠ The ribbon attached to the track is short and extremely delicate. Use care when moving the palm rest.

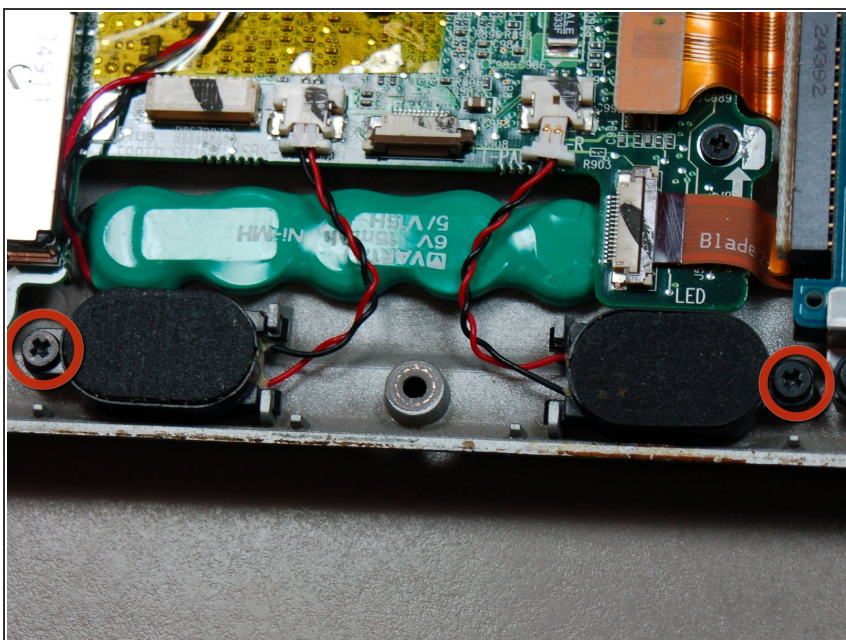


## Step 11



- Lift up on the small ZIF connector and remove the ribbon.
- ⚠ If the ribbon seems stuck, gently wiggle it to remove. Do not pull the ribbon with great force.

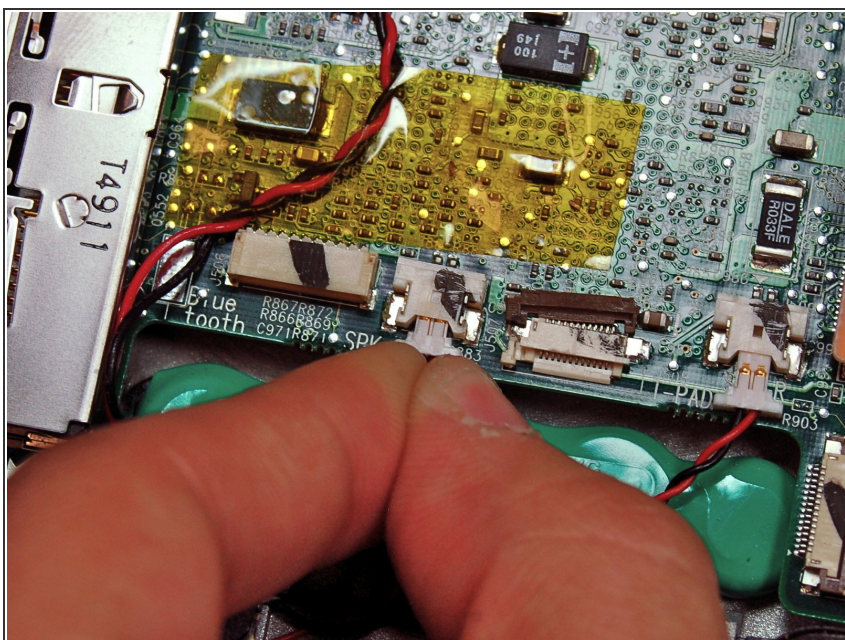
## Step 12 — Built-In Speakers



- Remove the #00 4 mm screws holding the speakers in place.

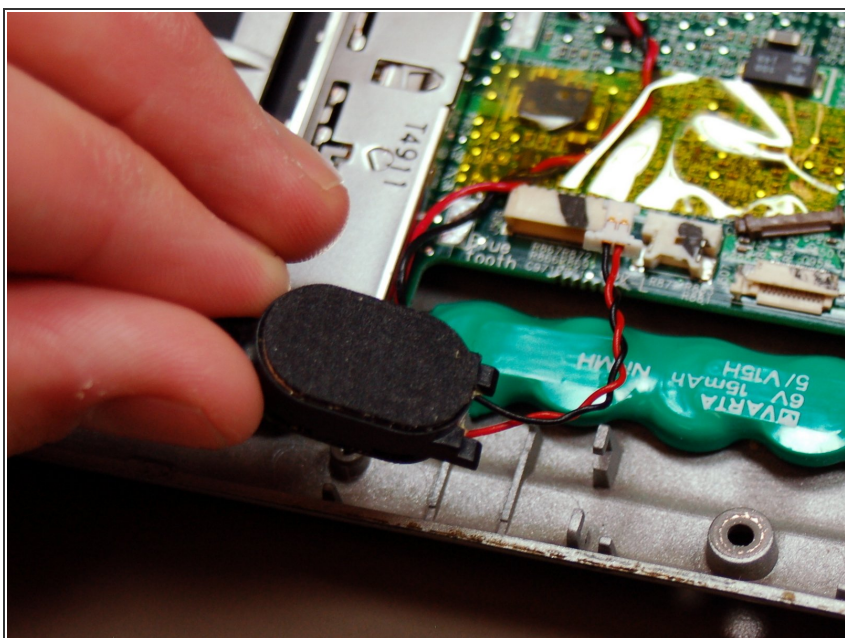


## Step 13



- Gently pull the speaker cable out.
  - If the wire is tight, wiggle it back and forth but don't apply too much force.
- ⚠ Do not use the speaker wire to pull itself out of the connector.

## Step 14



- Pull the speakers straight up and out of the laptop.

To reassemble your device, follow these instructions in reverse order.