



Jolla C or Intex Aqua Fish Teardown

Basic disassembly of the Jolla C (mostly the same as the Intex Aqua Fish)

Written By: Jos Wagenmakers



INTRODUCTION

Basic disassembly of the Jolla C (mostly the same as the Intex Aqua Fish)

TOOLS:

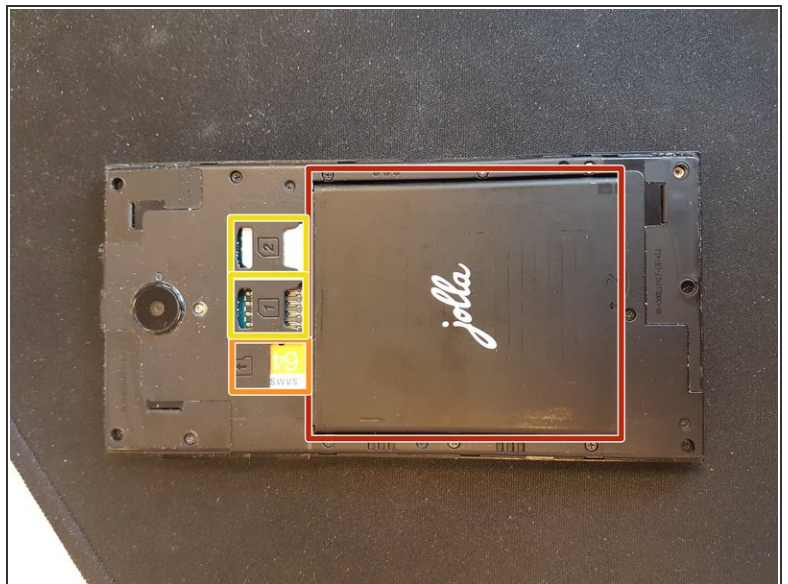
- [iFixit Opening Picks set of 6](#) (1)
 - [Spudger](#) (1)
 - [Mako Driver Kit - 64 Precision Bits](#) (1)
-

Step 1 — Phone & Back Cover



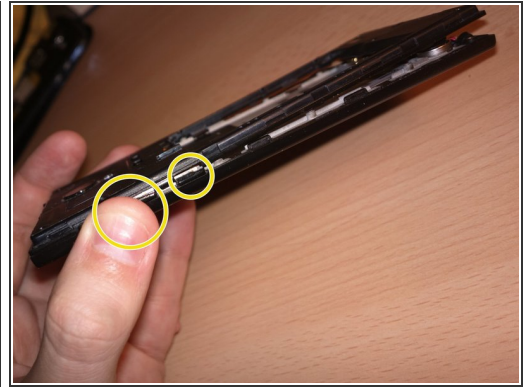
- Remove the back cover, starting at the bottom right corner with your nail or a prying tool

Step 2 — Battery, Sims & SD



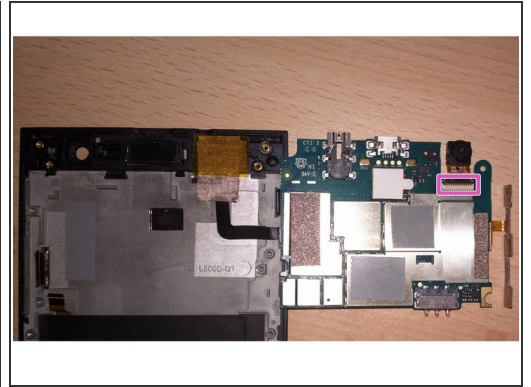
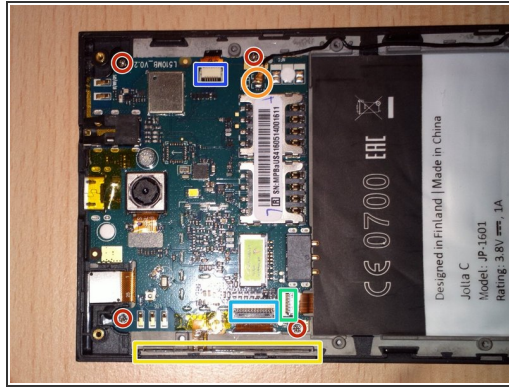
- Remove the battery
- Remove all sim-cards
- Remove the microSD-card

Step 3 — Middle Cover



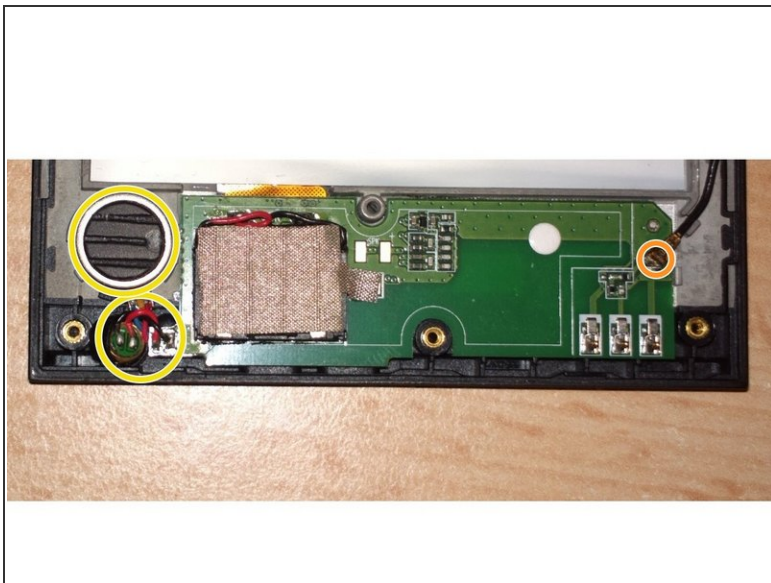
- Remove all 14 cross-head screws
- Use a prying tool to separate the middle cover from the phone, working from the bottom slowly up to the top
- Watch out for the power and volume buttons, which probably fall out of the device.

Step 4 — Top Circuit Board



- Remove all cross-head screws
- Remove the antenna wire from the circuit board
- Pry loose the power & volume button part at the side (it is stuck to the phone with sticky tape) and pull it out
- Pull out the connector for the bottom circuit board
- Pull out the screen connector
- Pry loose the connector for the proximity sensor etc
- ① Now you can remove the top circuit board
- Remove the main and front camera connectors

Step 5 — Bottom Cuircuit Board



- Remove the antenna cable
 - Remove the speaker and vibration motor from the phone
- ⚠ Both items are stuck to the phone and the cables are very fragile. I broke one of the connections when removing the speaker for a second time, as seen in the second picture. It is possible to solder it back on

To reassemble your device, follow these instructions in reverse order.